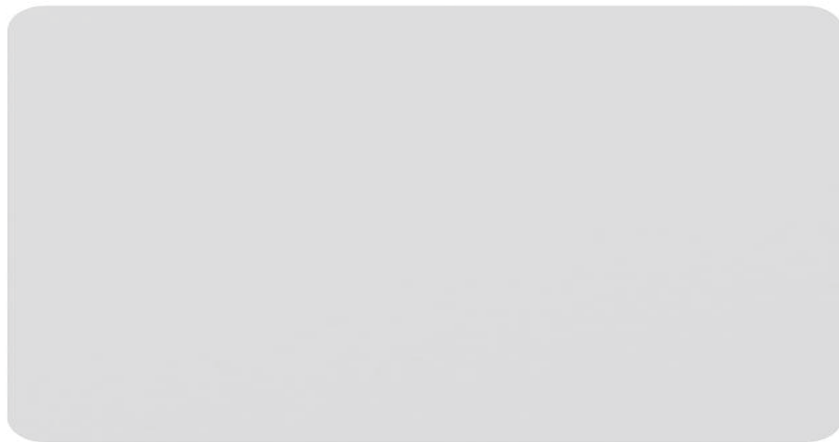




2kW PANEL HEATER



INSTRUCTION MANUAL

IMPORTANT: PLEASE READ THESE INSTRUCTION BEFORE USING THE PRODUCT
AND RETAIN FOR FUTURE USE.

Please follow the instructions carefully to ensure the safe and effective operation of the
device.

Stay warm and cozy with the **TCP 2000W White Aluminum Panel Heater**, designed for efficient and stylish heating in any space. Equipped with an advanced **X Shape Aluminium Heating Element**, this heater ensures rapid heat distribution while maintaining energy efficiency.

Key Features:

- **LCD Display:** Easily control temperature settings with the sleek, intuitive interface.
- **7-Day Heating Schedule:** Program your preferred heating schedule for each day of the week, ensuring warmth when you need it.
- **24-Hour Timer & Thermostat:** Customize your heating with a 24-hour timer and built-in thermostat for precision temperature control.
- **IEC Class I Protection:** High-level safety compliance for added peace of mind.
- **Child Safety Lock:** Prevent unwanted adjustments, keeping your home safe for children.
- **Window Detector Function:** Automatically adjusts heating when it detects an open window, optimizing energy use.
- Can be painted using a **heat-resistant primer** and topped with your desired color, allowing the heater to seamlessly blend with your walls and décor.

Sleek, reliable, and packed with modern features, the **TCP 2000W White Aluminum Panel Heater** is the perfect addition to your home's heating solution, providing warmth and style in one efficient package.

IMPORTANT SAFETY INSTRUCTIONS

The following should always be observed for safety:



WARNING: To prevent overheating and a possible fire, do not cover the heater. To reduce the risk of fire, keep textiles, curtains, or any other flammable material a minimum distance of 1m from the air outlet.

- **CAUTION — Some parts of this product can become very hot and cause burns. Particular attention has to be given where children and vulnerable people are present.**

WARNING: In humid areas such as bathrooms and kitchens, the connection box must be installed at least 250mm above the floor.

- This product is intended for indoor use. Do not use the product for any other purpose.
- For your safety, this heater is fitted with a thermal cut-out. In the event that the product overheats for some reason, the cut-out prevents excessive temperatures on the product by cutting the power to the heater.
- Do not use this heater in the immediate surroundings of a bath, a shower or a swimming pool, or where similar conditions of excessive moisture are present.
- Do not use in areas of excessive dust.
- Always unplug the product from the electrical outlet when it is not being used.
- There are no user serviceable parts in this appliance.
- This appliance can be used by children aged from 8 years and above and persons with reduced physical, sensory or mental capabilities or lack of experience and knowledge if they have been given supervision or instruction concerning use of the appliance in a safe way and understand the hazards involved. Children shall not play with the appliance.
- Cleaning and user maintenance shall not be made by children without supervision.
- Children of less than 3 years should be kept away unless continuously supervised.
- Children aged from 3 years and less than 8 years shall only switch on/off the appliance provided that

it has been placed or installed in its intended normal operating position and they have been given supervision or instruction concerning use of the appliance in a safe way and understand the hazards involved. Children aged from 3 years and less than 8 years shall not plug in, regulate and clean the appliance or perform user maintenance.

- This product is not intended for use by persons with sensory, physical and/or mental impairment that would prevent them from using it safely.
- **Use this heater on a horizontal and stable surface, or fix it to the wall, as applicable.**
- When wall mounting, ensure that the fixing will be anchored in a solid surface only.
- Do not attempt to open the unit as it may cause electrical shock.
- Always use both hands when moving the unit to avoid tilting and potential damage.
- Use this heater only as described in this manual. Any other use is not recommended by the manufacturer as it may cause fire, electric shock or personal injury.
- Do not insert or allow other objects to enter any air intake or outlet opening as this may cause an electric shock, fire or product damage.
- Do not put any stress on the power cord where it connects to the product, as the power cord could fray and/or break.
- Do not locate the heater in any area that may store or contain paint, fuel or other flammable liquids.
- Keep the power cord and product away from heated surfaces.
- Do not operate the heater with a damaged cord. If the supply cord is damaged, it must be replaced by the manufacturer or its service agent or a similarly qualified person in order to avoid a hazard.
- Do not use this product with an extension lead or multi plug adapter.
- Do not place the unit directly above or below a fixed socket outlet or connection box.
- **Do not operate if the product has been dropped or damaged in any way. Please seek help from a professional service facility for electrical or mechanical adjustment, or repair.**

SPECIFICATION

MODEL	TCPWHHEAT2000WNCQ20 – TCP WHITE PANEL HEATER 2kW
--------------	---

Item	Symbol	Value	Unit
Heat output			
Nominal Heat Output	Pnom	2.00	KW

Item	Value
Type of heat input, for electric storage local space	
Manual heat charge control, with integrated thermostat	No

[illegible]

Manual heat charge control with room and/or outdoor temperature feedback	No
Electronic heat charge control with room and/or outdoor temperature feedback	No
Fan assisted heat output	No
Type of heat output/room temperature control (select one)	
Single stage heat output and no room temperature control	No
Two or more manual stages, no room temperature control	No
With mechanic thermostat room temperature control	No
With electronic room temperature control	No
Electronic room temperature control plus day timer	No
Electronic room temperature control plus week timer	Yes
Other control options (multiple selections possible)	
Room temperature control, with presence detection	No
Room temperature control, with open window detection	Yes
With distance control option	No
With adaptive start control	No
With working time limitation	No
With black bulb sensor	No

INSTALLATION INSTRUCTIONS

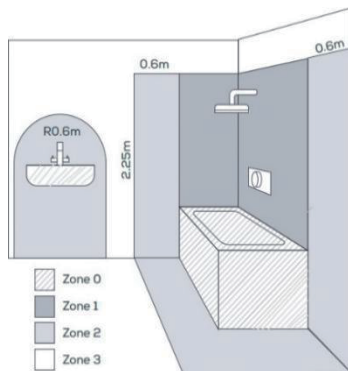
LOCATION OF INSTALLATION

This product can be installed in a bathroom but only in the area designated by the IP rating – Zone 3 – see location information below.

PLEASE NOTE:

THE HEATER IS TO BE INSTALLED SO THAT SWITCHES AND OTHER CONTROLS CANNOT BE TOUCHED BY A PERSON IN THE BATH OR SHOWER.

IN AREAS OF HIGH HUMIDITY SUCH AS BATHROOMS OR KITCHENS, THE CONNECTION BOX MUST BE INSTALLED AT LEAST 25CM ABOVE THE FLOOR.



Suitable for indoor only. This product is rated as IP24. If the product is to be installed within a bathroom it can only be located within zone 3.

Zone 0

The area inside a bath or inside the shower
This area requires low voltage and an IP67

Zone 2

An area stretching 0.6m (1' 11¹¹/₁₆") outside the perimeter of the bath and to a height of 2.25m (7' 4¹/₄") from the floor. In addition, it is good practice to consider the area around a wash basin, within a 60cm (1' 11¹¹/₁₆") radius of any tap to be

Zone 1

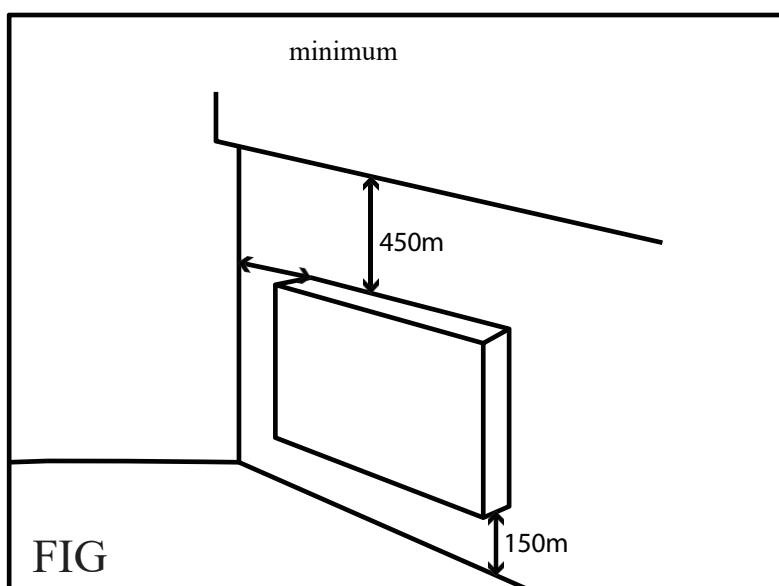
The area above the bath to a height of basin.
2.25m (7' 4"") from the floor. If the light is
240V then a 30ma residual current device
(RCD) must also be used to protect the circuit in

Zone 3

Anywhere outside Zones 0, 1, and 2 and where no water jet is likely to be used. If there is a likelihood of water jets being used for cleaning purposes in zones 1, 2 and 3 a fitting rated a minimum of IP65 must be used.

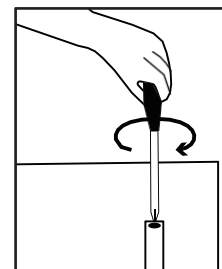
WALL MOUNTING INSTRUCTIONS

This product is suitable for indoor use only. It is IP24 rated. Cannot be used underwater. Do not attach to surfaces which are damp or freshly painted.

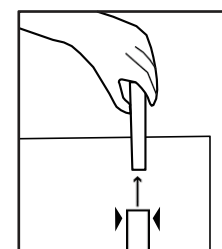


Please use the mounting brackets supplied. The heater should be positioned observing the minimum clearances stated around the heater – see Fig. 1

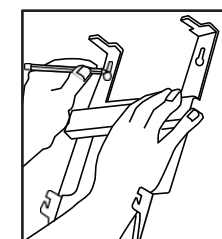
1. First remove the wall bracket from the rear housing. Unscrew the screws located on the top of the 2 vertical bars of the wall bracket.



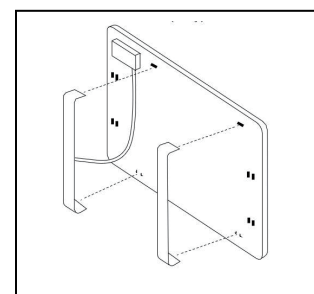
2. Then pull out the top bar by pressing firmly both upper parts slotted into the rear housing. Slide down the wall bracket in order to remove it from the rear housing.



3. Fix the wall bracket securely to the wall through the 4 screw holes provided.



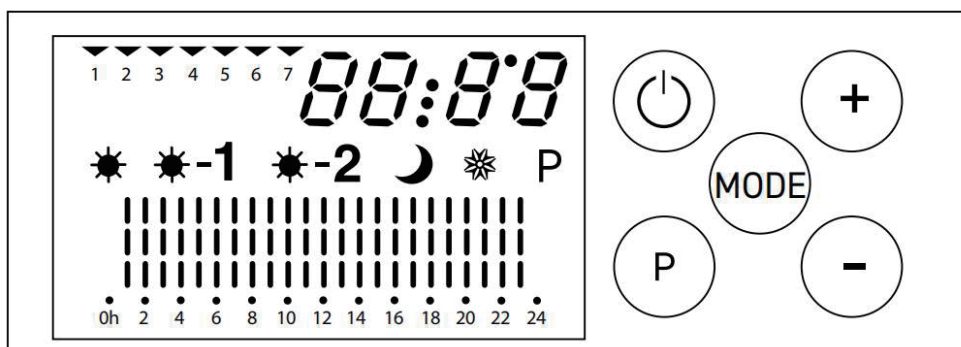
4. Raise the heater to upright position. Present the heater and engage 2 slots of the bottom parts of the wall brackets in the wall heater's rear enclosure then pull up the heater. Then engage 2 slots of the upper parts of the wall bracket and tighten the 2 screws in order to lock the device



WARNING: Before using the heater, make sure it is mounted tightly on the wall.

OPERATING THE HEATER

Control Panel



Symbol	Function	
	Main power switch	Turn the heater on by pressing the main switch to the "I" position. The heater is now in standby mode.
	ON / OFF	Press this button on the control panel and the heater will now enter the anti-frost mode. The LCD screen will display 7.0°C and
	COMFORT MODE	Continually press the mode button until the symbol is displayed. Use the + and – buttons to set the desired temperature. After you select the temperature for your comfort mode wait 5 seconds for the °C to flash 5 times and then remain constant. The temperature is now set. The comfort range is between 5°C and 35°C
	COMFORT - 1°C	User cannot set the temperature. The heater will decrease 1°C from comfort mode setting. Eg, if you have set 19°C as the comfort mode then the comfort mode -1°C will be 18°C
	COMFORT - 2°C	User cannot set the temperature. The heater will decrease 2°C from comfort mode setting. Eg, if you have set 19°C as the comfort mode then the comfort mode -1°C will be 17°C
	ECO MODE	The user cannot set the temperature. The heater will decrease 3.5°C from the comfort mode setting. Eg, if you have set 19°C as the comfort mode then the Eco mode will be -3.5°C will be 15.5°C
	ANTI-FROST MODE	The temperature is 7°C. User cannot amend the temperature
P	PROG MODE	Used to set the program. The selection is for 24hr / 7 day
[]	Open window function	
[]	Keypad lock function	

To turn the heater on and off.

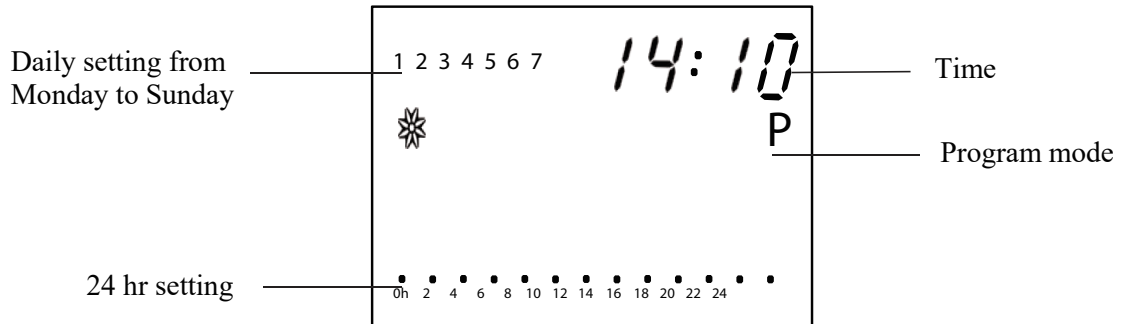


Plug the appliance to AC 230V/240V 50/60 Hz. Turn the heater on by pressing the main switch to "I" position. The heater is now in standby mode. With the heater in standby mode, press the above symbol on the control panel to turn on. When the heater is working, press the above symbol to turn off. When the heater is turned off, unplug the product.

Heater Operations – Daily & Weekly Programming

P PROGRAM MODE. The heater is programmable 24/7.

Select P. The following screen will be shown:



To set the current day and time

To set the current day. Press P on the control panel. 1 is for Monday, 2 is for Tuesday, etc.

The light above the number 1 will be flashing. Move the flashing light with the + or – keys the required number of times to select the day you want. Press the – key to reverse the selection. Press P to confirm the selection.

To set the current time. Once the P has been pressed to confirm the day, the hour digits will flash. The hour can be adjusted by pressing + and -. Press “P” to confirm the hour. The minutes will now flash. Adjust the minutes by pressing + and -. Once you have entered the minutes press P to save the selected time.

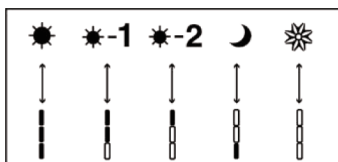
Once the current day and time are set you can then set the program timings for the heater.

24 hour/7 day Programming

Press P and the first day of the week will be selected. The ▼ will flash above the number 1 to indicate this.

Press mode and the 0h on the 24-hour setting will flash. If you want the heater to turn on for this hour segment (0H to 1hr) press the mode button repeatedly until you have selected the mode you require (see below). Once the mode has been selected press the + symbol to move to the next hour you want the heater to come on and follow the above. Once you have repeated the process for 1st day press P to move on to the 2nd day. When all 7 days have been programmed press P to save your selections. The heater is now ready to run on your programmed settings.

Note – if a specific hour does not have a mode selection the program will default to the anti-frost setting.



Pre-set Daily Programs

There are 4 pre-set daily programs that can be selected for each day of the week. The pre-set programs can also be changed to different mode settings by selecting each individual time segment to suit your own requirements.

To select a pre-set program, press P to enter the programming mode. Press and hold the mode button and P1 will be displayed. Use the + and – buttons to select the program you want – P1, P2, P3 or P4. Press the mode button to confirm your selection. Your selection will be used for that day.

Note: The mode can be changed but the timings cannot.

P1

From 00:00 to 06:00hrs: Eco mode

From 06:00 hrs to 09:00 hrs: Comfort mode

From 09:00 hrs to 17:00 hrs: Eco mode

From 17:00 hrs to 23:00 hrs: Comfort Mode

From 23:00 hrs to 00:00 hrs: Eco mode

P2

From 00:00 to 06:00 hrs: Eco mode

From 06:00 to 09:00 hrs: Comfort mode

From 09:00 to 12:00 hrs: Eco mode

From 12:00 to 14:00 hrs: Comfort mode

From 14:00 to 17:00 hrs: Eco Mode

From 17:00 to 23:00 hrs Comfort mode

From 23:00 to 00:00 hrs Eco mode

P3

From 00:00 to 08:00 hrs: Eco mode

From 08:00 to 23:00 hrs: Comfort mode

From 23:00 to 00:00 hrs: Eco mode

P4

From 00:00 to 08:00 hrs: Comfort -2 mode

From 08:00 to 23:00 hrs : Comfort mode

From 23:00 to 00:00 hrs: Comfort -2 mode

To change the mode selection for each individual hour, use the + and – button to select the hour and press the mode button to select the desired mode. Press P to confirm.

OPEN WINDOW FUNCTION

If the heater detects a drop in the room temperature of 4°C within 30 minutes, the heater will operate in the anti-frost mode.

The heater will revert to the previous mode automatically if the room temperature increases by 2°C.

To select this function, press the + and – keys at the same time and hold for 3 seconds. This process can also be used to revert to the previous function manually.

KEYPAD LOCK FUNCTION

The keypad can be locked. This is done by pressing and holding the mode and P keys together for 3 seconds. To reverse repeat this process.

Please note that if the heater is switched off by the on/off switch located on the side panel and turned off /disconnected from the mains supply the control panel will retain all pre-programmed settings, however the clock settings will need to be reset. If the heater is turned off but the mains supply is left on the current date and time will not be required to be reset.

CLEANING THE HEATER

Turn off the Heater and remove from the power supply. Always allow the heater to completely cool before handling or cleaning. Clean the outside by wiping with a soft, moist cloth, with or without a mild detergent, to remove any dust or dirt. Regularly clean the air outlet and air inlet with a soft, dry cloth or vacuum cleaner nozzle to prevent dust or other impurities from obstructing and affecting the air circulation.

Do not allow water or other liquids to run into the interior of the heater, as this could create a fire and/or electrical hazard. **Do not** use harsh detergents, chemical cleaners or solvents as they may damage the surface finish of the plastic components.

MAINTENANCE AND STORAGE

Ensure the product has been turned off and the power cable is unplugged from the electrical outlet before storing. Clean the air outlet and air inlet. When the Heater is not in use for a long period of time it should be protected from dust and stored in a clean, dry place. Do not place any heavy items on top of the appliance during storage as this may result in possible damage to the appliance.

DISPOSAL



Only dispose of electrical appliances as designated municipal waste facilities. Contact your local government for information regarding the collection systems available. If electrical appliances are disposed of in landfills or dumps may prove hazardous to health.

GUARANTEE

The manufacturer provides the guarantee in accordance with the legislation of the customer's own country of residence, with a minimum of 1 year, starting from the date on which the appliance is sold to the end user.

The guarantee only covers defects in material or workmanship. The repairs under guarantee may only be carried out by an authorized service centre. When making a claim under guarantee, the original bill of purchase (with purchase date) must be submitted. The guarantee will apply only in cases of normal wear.

REGISTERED OFFICES

TCP UK Ltd, 1 Exchange Court, Cottingham Road, Corby, Northants NN17 1TY, England.
TCP France, Quai Gabriel P'ri, 1, Joinville Le Point, France. 94340.