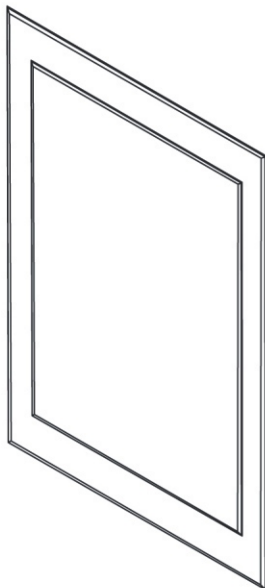


Installation Manual



Please retain this manual after installation for future reference and maintenance.

Images are for installation purposes only.

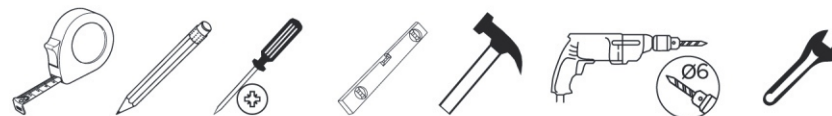


IMPORTANT

Handle with care, impact can damage the mirror.
Use of safety equipment is advised

VER 2022.02

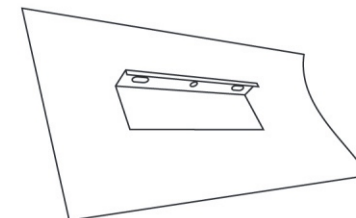
Tools Required(not provided)



01



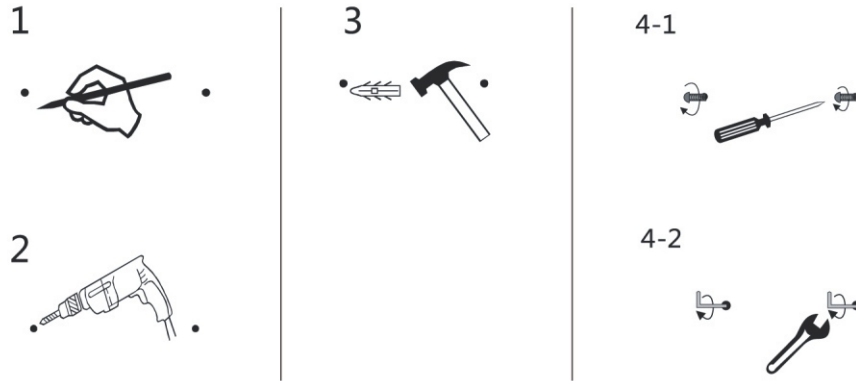
check 4-1



check 4-2

Please Note: There are two different types of fitting bracket
please check which style is on the mirror you have purchased.

02



1. Measure the distance between the two brackets on the back of the mirror.
Mark the distance on the wall.

2. Check the marks are level and drill the holes.

3.1 If the mirror is secured by screws, insert the wall plug, thread in the screws and hang the mirror onto the screws.

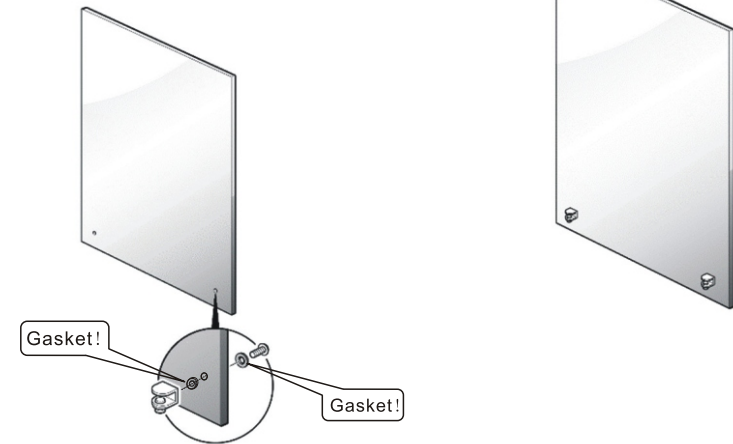
3.2 If the mirror is secured by the hooks, insert the wall plugs, position the hooks and thread in the screws to fix the hooks, then hang the mirror onto the hooks.

Please note:
make sure the holes on the wall and on the hooks are lined up

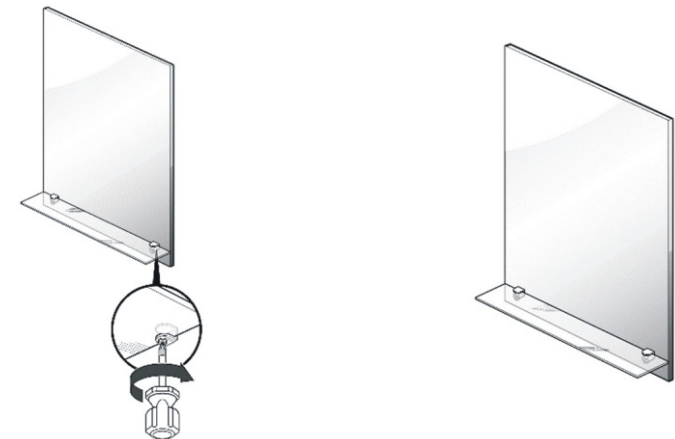
03

Installing Mirrors with Shelves

- 1 Unscrew the screws (with TWO gaskets) from the clips. Insert screws through the back holes on the mirror. **In order to prevent mirror from crack in shelf installation, two gaskets should be placed correctly : one between clip and mirror on front side while the other between mirror and screw back side.**
- 2 Fix the metal clips by tightening screws at the back.



- 3 Insert shelf (s) and tighten screws at the bottom of the clips.
- 4 Hang up the mirror by following steps 1-3.



If a product comes without glass shelf, please ignore this step.