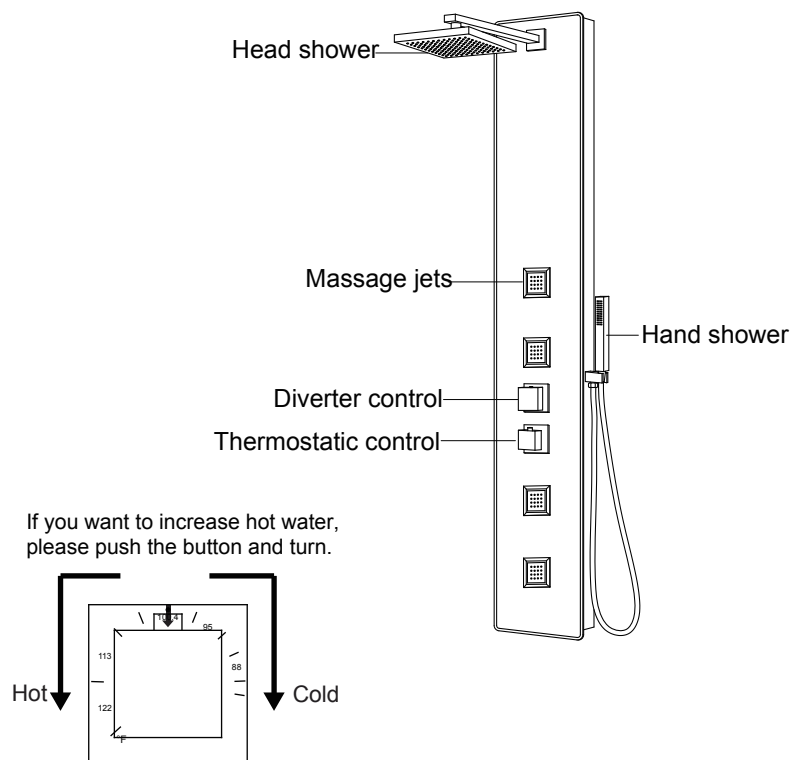
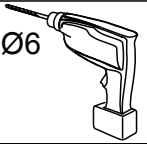
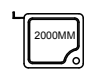

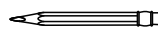

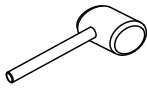

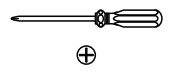
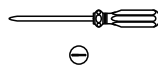


INSTALLATION

Shower Panel

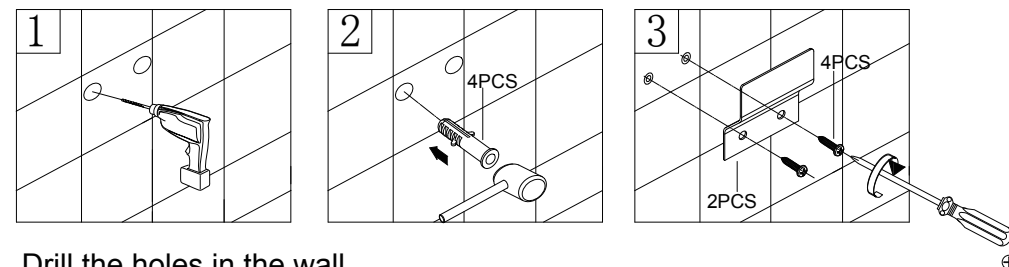


FOR INSTALLATION YOU WILL REQUIRE

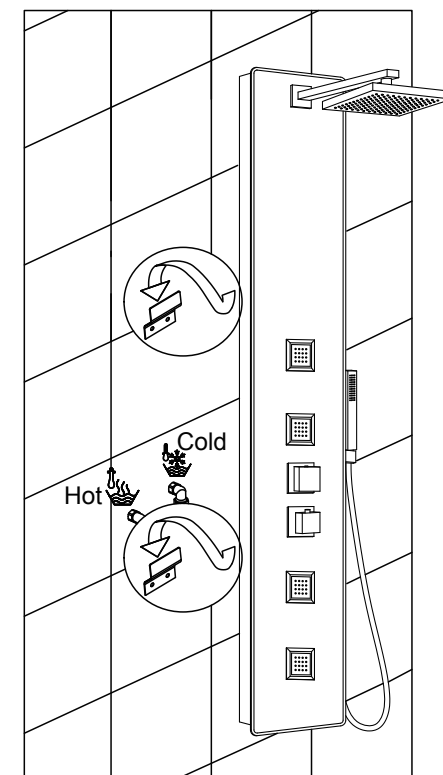
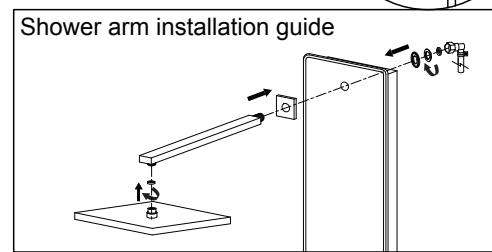
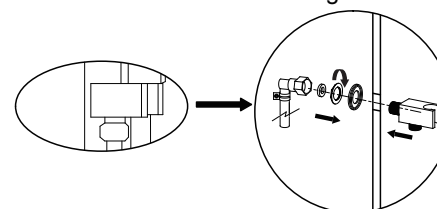
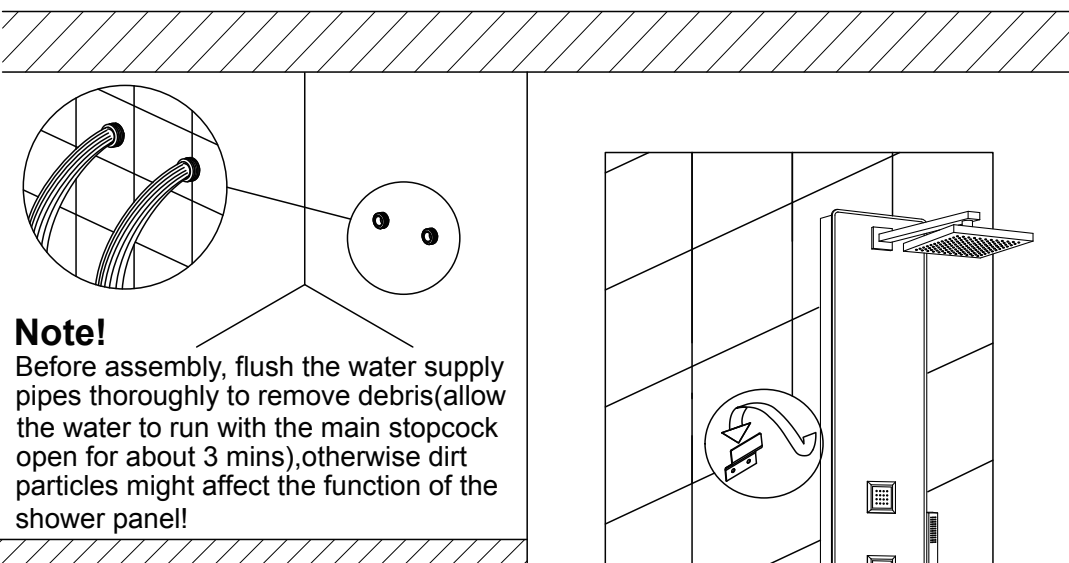
				
Electric Drill	Tape measure	Wrenches	Pencil	Hexagonal wrench
				
Hammer	Sealing Tape	Screwdriver	Screwdriver	

Note: Always check the walls for pipes and wires before drilling.

Steps:



1. Drill the holes in the wall.
2. Insert the wall plugs inside the holes.
3. Tighten the screws to the wall with wall mounting brackets.



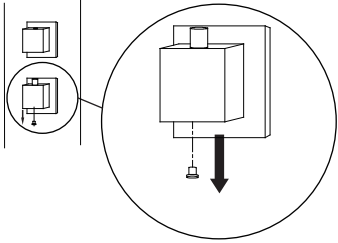
Note: No harsh abrasive cleaning agents or materials can be used. Use a clean damp cloth only.



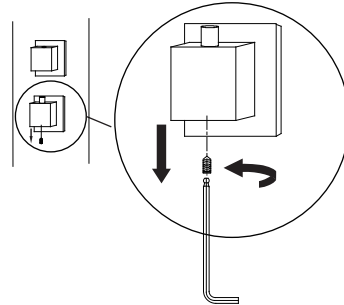
NOTE: PLEASE CARRY OUT THE FOLLOWING STEPS,IF CLEANING /MAINTENANCE IS REQUIRED

Removal process

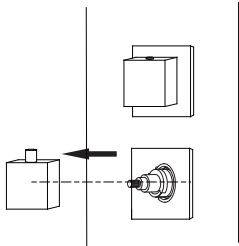
① Take off cap



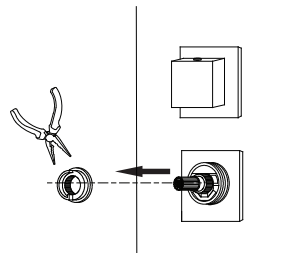
② Loosen HEX screw off with hexagonal wrench



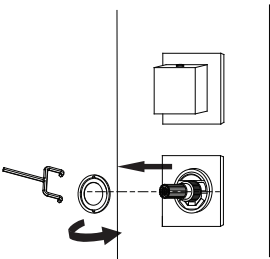
③ Take off head



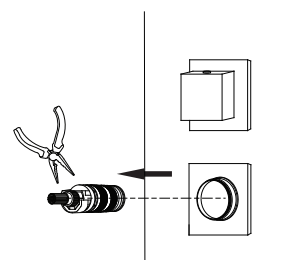
④ Take off ring



⑤ Unscrew the brass ring from the valve using the tool

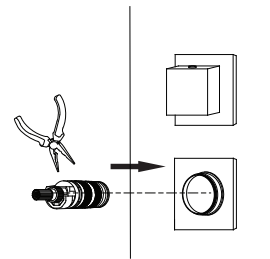


⑥ Remove the valve and clean: Run under warm water and use a toothbrush or similar to remove any debris or limescale

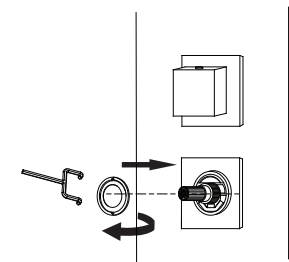


Installation process

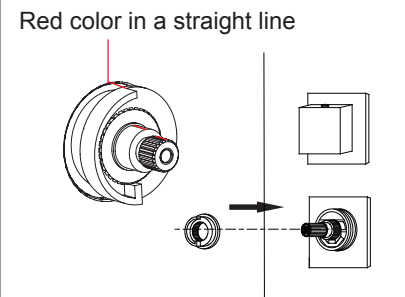
① Put the valve back



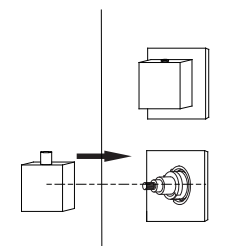
② Put brass ring on top of valve



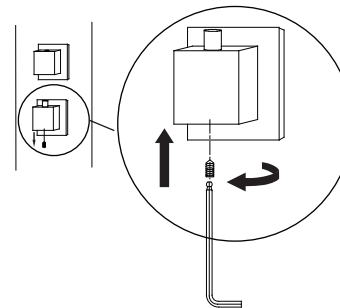
③ Put ring in place



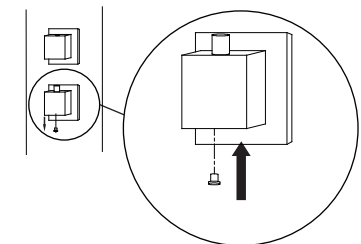
④ Press the button on the valve and put on the head as below ensuring the screw hole pointing to the front



⑤ Use hexagonal wrench to fix the HEX screw tightly



⑥ Put on cap



Check out our full range of Showers

Electric Showers

Digital Showers

Mixer Showers

Power Showers

Smart Showers

Shower Towers

From Top Shower Brands

Mira Showers

Aqualisa Showers

Triton Showers

Gainsborough Showers

Shower Pumps can upgrade your showering experience even more

Stuart Turner Shower Pumps

Salamander Shower Pumps

Grundfos Shower Pumps

plumbworld
Big brands, small prices.