

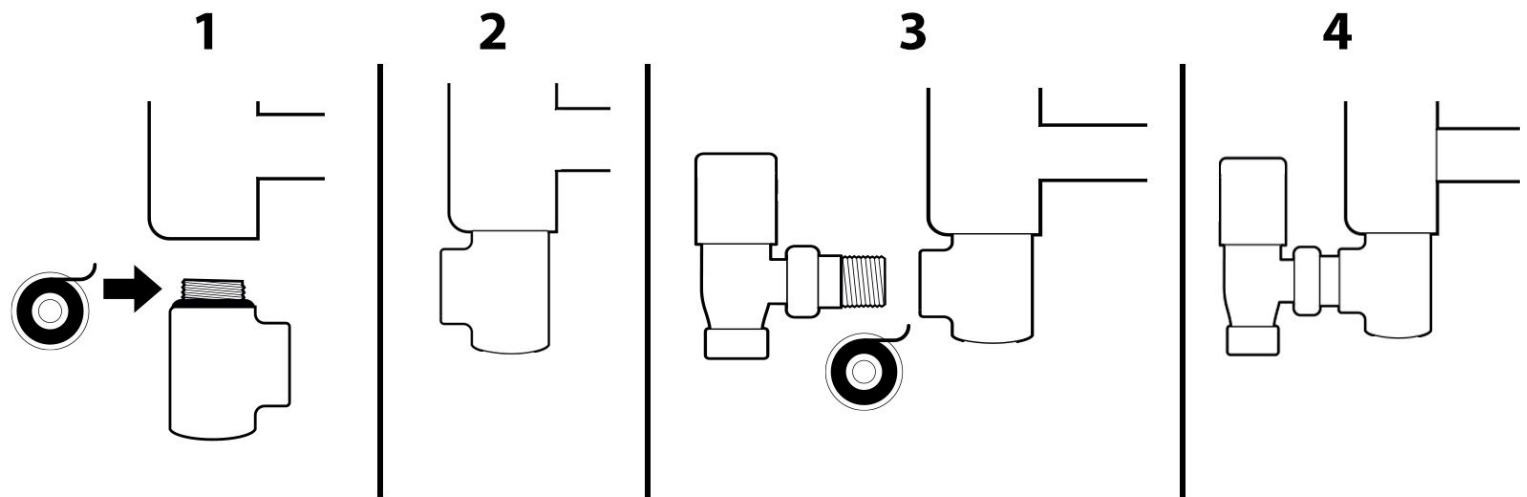
ELBOW for Dual Fuel Towel Rail / Radiator Installations



Required tools :

PTFE tape

Spanner



* Valves are not supplied with Elbow.

Daily Care Instructions

1. The surface of the Elbow should be cleaned with warm soapy water. Strong acid and alkaline cleaning agents are not suitable for the cleaning of the surface.
2. Limescale, rust, etc. on the Elbow. Simply wipe the surface with a damp cloth or sponge dipped in a little distilled vinegar solution, then dry with a clean rag or rinse well water.

NOTE: This product should only be fitted by a fully qualified installer.