

## INSTALLATION RECOMMENDATIONS

It is recommended that careful thought be given to siting the appliance within the room. Try to avoid being directly in front of the heater for long periods. Consider where you may stand, at a work surface or the like. Position the heater to deliver the benefit of its warmth but not so as to overheat yourself.

The heater must not be located immediately below a fixed socket outlet.

## INSTALLATION REQUIREMENTS

The appliance is designed to fit behind the plinth board and below the base shelf of a kitchen-type cupboard ie within the free plinth space. Figure 1 below shows the MINIMUM size cupboard unit into which the appliance may be fitted.

The appliance may be installed into a cupboard with dimensions larger than those given above.

## INSTALLATION PROCEDURE

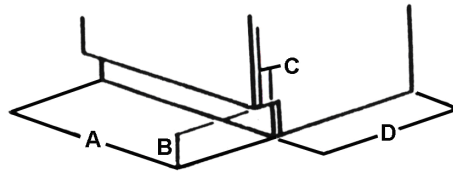
1. Cut a hole in the plinth board, to the dimensions given in Figure 2.
2. The power supply cable must be routed from the connecting unit into the plinth space. The cable shall be sufficiently long as to pass through the plinth space and plinth board. This enables the appliance to be subsequently withdrawn from the plinth if maintenance is required. Ensure no sharp edges are present along the power cable route.
3. The appliance can now be slid through the plinth board, until the fascia panel abutts the outside of the plinth board. Screw the fascia panel to the plinth board with the screws provided.
4. Connect the unit to the mains power supply in accordance with the appropriate section of these instructions.

To remove the appliance from the plinth space, should maintenance be required, disconnect mains power supply, unscrew fascia panel and slide out the appliance.

These dimensions are for a 600mm wide by 100mm high plinth. If the appliance is to be fitted into a plinth greater in length than specified then the hole shown in Figure 2 must be cut at least 22mm from one end.

If the supply cord on this appliance is damaged, it must be replaced by a special cord which is only available from an Authorised Service Agent, or your supplier. If replacement of the supply cord is found to be necessary, the following should be noted.

Fig 1 (Min Cupboard Size)



### UNIT REF

A - Width	600 mm
B - Plinth Height (minimum)	100 mm
C - Base Shelf Overhang	75 mm-max
D - Depth	500 mm

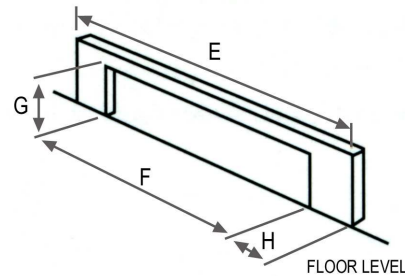
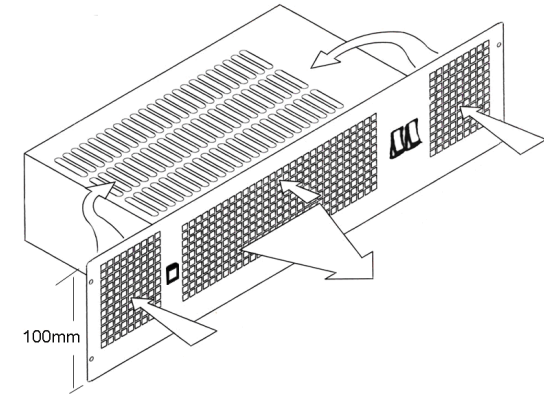


Fig 2 – Mounting Slot

Model	E	F	G	H
SS3E	500	540	95	30

## AIRFLOW



## OPERATION

The square red switch on the left hand side switches the unit on and connects the mains supply to the fan motor (giving a cool airflow) and energises the heat control switches.

## HEAT CONTROL

When the left switch on the right hand side is depressed it will illuminate and the heat output is 1kW. When the right-hand switch is depressed it will illuminate and the heat output is 2kW. When both switches are depressed the heat output is 3kW.

The appliance is fitted with an electronic Safety Control (ES). This is a safety device which switches off the heater if, for any reason, the appliance overheats. The ES Controls can only be reset after the appliance has cooled down. In order to reset the ES Control proceed as follows:

1. Switch off appliance and leave for approximately 5 minutes.
2. Switch on appliance and ES Control will reset.
3. Ensure that the appliance is functioning correctly. If the ES Control operates again, the appliance should be checked by a competent electrician.

## CONNECTION TO THE MAIN SUPPLY

Electrical installation should be carried out by a competent installer, preferably registered with NICEIC (National Inspection Council for Electrical Installation Contracting) in accordance with the 16 edition of the IEE Wiring Regulations, (BS.7671), and any relevant Local Authority bye-laws.

This heater is fitted with a 3-core mains supply cable and should be permanently connected to the electricity supply via a double pole switch having 3 mm gap on each pole.

A switched Fused Connection unit to BS.1363 Part 4 is a recommended mains supply connection accessory to ensure compliance with safety requirements applicable to fixed wiring installation.

## SAFETY

This equipment has been designed and manufactured to the highest international standards, but like all electrical appliances which are operated by mains voltage, care must be taken if you are to obtain the best results and safety is to be assured.

The appliance is not intended for use by persons (including children) with reduced physical, sensory or mental capabilities, or lack of experience and knowledge unless they have been given supervision or instruction concerning use of the appliance by a person responsible for their safety.

Children should be supervised to ensure that they do not play with the appliance

- Do NOT use this appliance in bathrooms or where similar conditions of excessive moisture are present.
- Do NOT handle the appliance with wet hands.
- Do NOT use the appliance in an enclosed room so small that the heater will generate ambient temperatures in excess of 30°C.
- Do NOT use the appliance with young children unattended.
- Do NOT use the appliance in workshops or rooms where excessive dust is generated or present.
- Do NOT touch outlet grille when appliance is in use.
- Do NOT use the appliance if damaged.

**WARNING: IN ORDER TO AVOID OVERHEATING, DO NOT COVER THE HEATER**

## CLEANING

- Always disconnect the heater from the mains before cleaning.
- An occasional wipe over with a soft cloth is all that should be necessary.
- Do NOT use metal or furniture polish on any part of the heater.
- Do NOT touch the heater with wet hands or in any way bring water into contact with it.

## IF YOUR HEATER DOES NOT WORK

- Check that the unit is wired correctly.
  - Check that the fuse has not blown in the connection unit.
  - If you are replacing a fuse a 13 Amp fuse, approved by ASTA to BS1362, must be used.
  - Check re-set of ES Control as described under Controls.
- Should none of the above remedies work, then disconnect heater from mains and consult an accredited Service Agent. If the appliance is still under guarantee, return it to your supplier.
- Do NOT attempt to repair the heater yourself.

## GUARANTEE

Your product is covered by a free 5-year parts and labour guarantee.



Smith's Environmental Products Ltd,

Blackall Industrial Estate, South Woodham Ferrers, Chelmsford, Essex, CM3 5UW

Tel: 01245 324900 Fax: 01245 324422

Sales E-mail: sales@smiths-env.com General Information E-mail: info@smiths-env.com Web: www: smiths-env.com

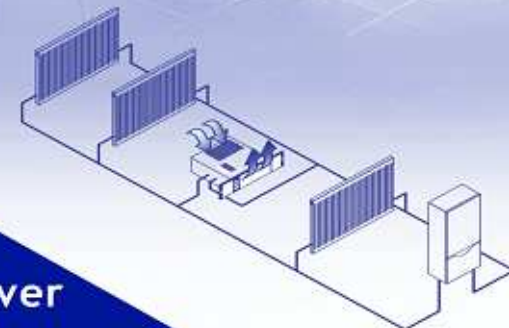
For Ireland, contact MT Agencies (Ireland) Ltd on Tel: 00353 1 844 3212

# SS3E

# Space Saver

## Installation and User Guide

### Discover the hidden benefits



## Space Saver