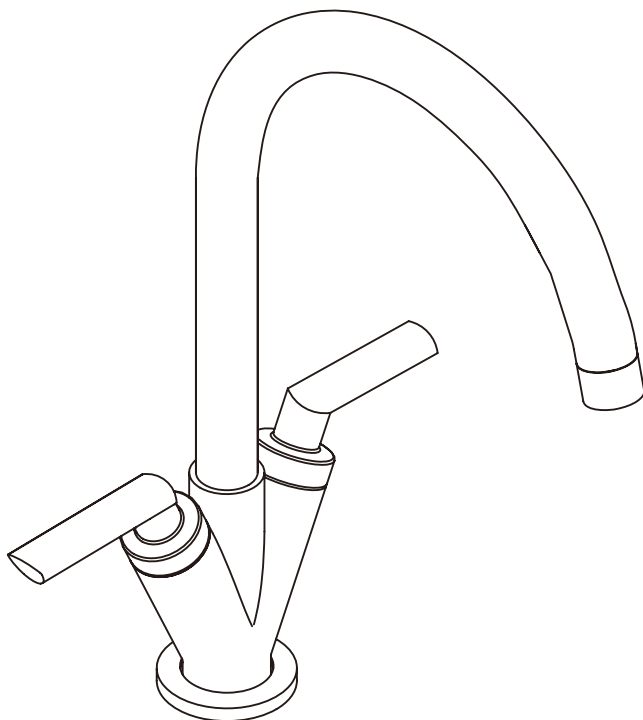


# Mono Sink Mixer

## Fitting instructions

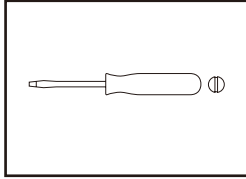
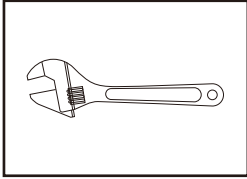


**Please note: Tap head shown is for illustration purposes only.  
Please keep these instructions for future reference and request of replacement parts.**

We have taken great care to ensure that this product reaches you in perfect condition. However should any parts be damaged or missing please contact your point of purchase. This does not affect your statutory rights. In addition if you require replacement parts your point of purchase will be happy to assist.

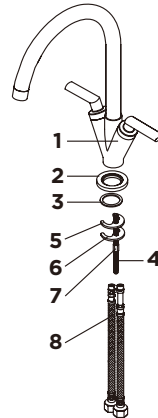
<b>Contents</b>	<b>Page</b>
<b>1. Tools required</b>	<b>3</b>
<b>2. Parts Supplied</b>	<b>3</b>
<b>3. Before you start</b>	<b>3</b>
<b>4. Installation</b>	<b>4-5</b>
<b>5. Aftercare</b>	<b>6-8</b>

## Tools required (Tools not supplied)



## Parts Supplied

NO.	Description	Qty
1	Tap Body	1
2	Flange (if supplied)	1
3	Anti-Rotational Washer	1
4	Fixing Stud	1
5	Rubber Horseshoe Washer	1
6	Metal Horseshoe Washer	1
7	Fixing Nut	1
8	Braided Connectors	2



## Before you start

The taps is suitable for use at water supply pressures of 0.2 bar (min.) to 5 bar (max.).

This pressure rating is determined by the manufacturer using soft water under test house conditions and may differ to the retailer's recommendation.

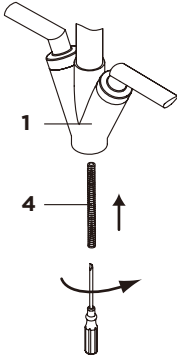
BS 8558 recommends hot water should be stored and distributed at a temperature of not less than 60°C which will help minimise the build-up of limescale. For further details contact your Local Water Authority.

This taps should be installed in compliance with the Water Regulations.

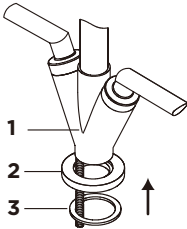
- (a) Identify all components and check pack contents.
- (b) Turn off water mains supply.

# Installation

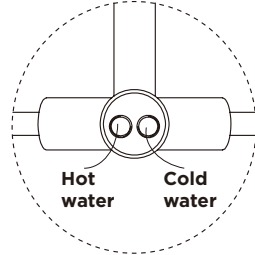
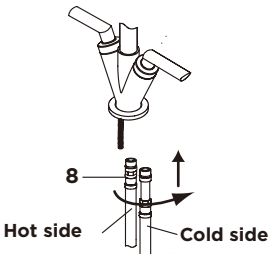
1. Fit Fixing Stud(4) to Tap Body(1) and tighten it.



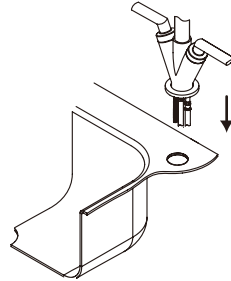
2. Fit Flange(2) to Tap Body(1), ensure that Anti-Rotational Washer(3) has been fitted to Flange(2). if the Flange(2) is not supplied, fit Anti-Rotational Washer(3) directly to the Tap Body(1).



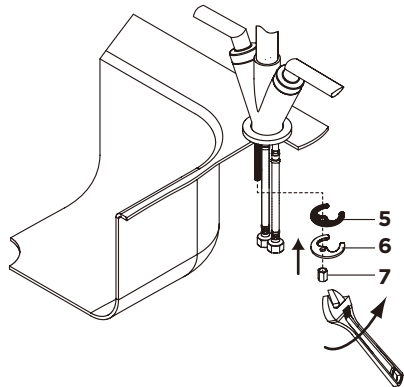
3. Screw 2x Braided connectors(8) into Tap Body(1), do not over tighten.



4. Locate the tap assembly down through the tap hole in sink.

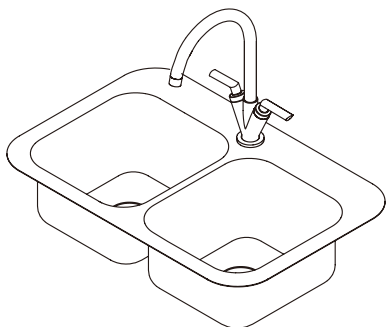


5. Fit Rubber Horseshoe Washer(5) and Metal Horseshoe Washer(6) onto the Fixing Stud(4). And then fix Fixing Nut(7) onto the Fixing Stud(4). Do not over tighten.



**6. Fit Braided Connectors(8) to the water supply using suitable plumbing joints.**

**7. Turn on the hot and cold and mains water supply. Check for leaks immediately. It is always advisable at this stage to flush out the system. To do this, open both valves fully and allow water to flow for approx. 1 minute. This will remove any foreign matter within the installation.**



---

**8. Finally turn on all the water heating arrangements.**

# Aftercare

## Cleaning the valve (if water dripping from tap)

### Type 1:

Before carrying out any maintenance, turn off the mains water supply. If unsure contact a qualified tradesman.

Remove the cap(e), grub screw(a), handles(b) and spindle(c).

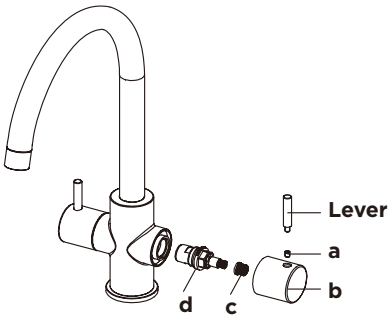
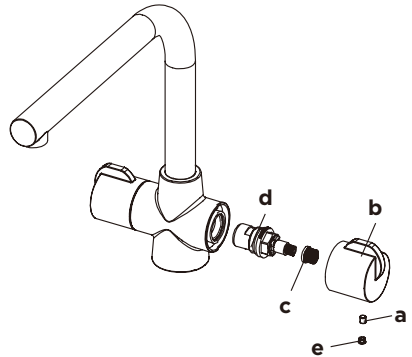
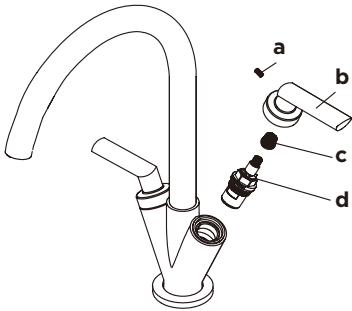
Remove the valve(d) using a suitable spanner, clean thoroughly under cold water to remove any build up of limescale or debris.

If necessary replace the valve.

Replace the valve(d) into the body, tighten the valve using a suitable spanner.

Replace the spindle(c) and handles(b), tighten the grub screw(a).

Re-fit the lever or cap(e) to handle(b).



## Cleaning the valve (if water dripping from tap)

### Type 2:

Before carrying out any maintenance, turn off the mains water supply. If unsure contact a qualified tradesman.

Remove the cap (e), grub screw (a), handles (b).

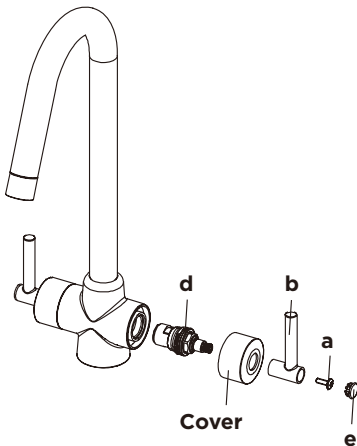
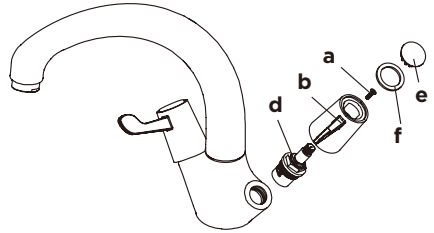
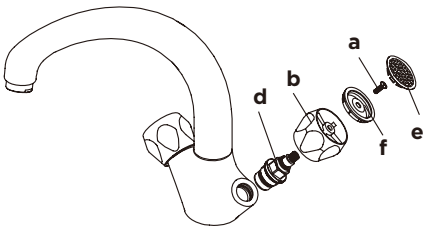
Remove the valve (d) using a suitable spanner, clean thoroughly under cold water to remove any build up of limescale or debris.

If necessary replace the valve.

Replace the valve (d) into the body, tighten the valve using a suitable spanner.

Replace the handles (b) and indice (f), tighten the grub screw (a).

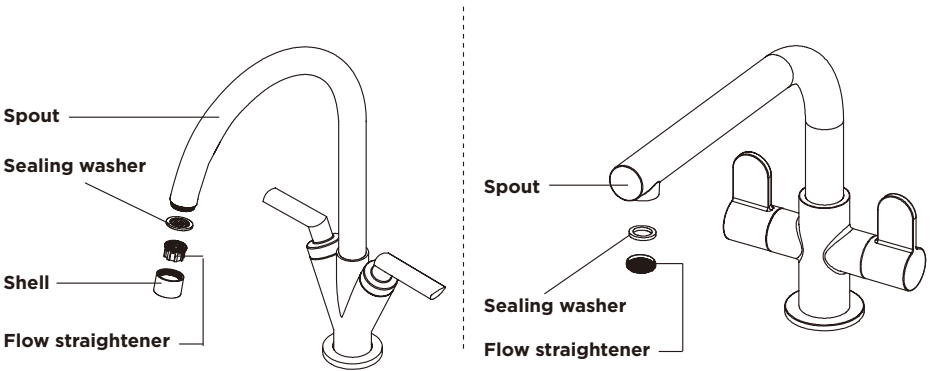
Re-fit the cap (e) to handle.



## Cleaning the flow straightener (if no flow or low flow rate)

Before carrying out any maintenance, turn off the mains water supply. If unsure contact a qualified tradesman.

Remove the shell, flow straightener and sealing washer from the spout.  
clean thoroughly under cold water to remove any build up of limescale or debris.  
Re-fit the flow straightener, sealing washer and shell to spout.



## General cleaning

Whilst modern plating techniques are used in the manufacture of these fittings, the plating will wear if not cleaned properly. The safest way to clean your product is to wipe with a soft damp cloth. Stains can be removed using washing up liquid. All cleaning powders and liquids will damage the surface of your fitting even the non-scratch cleaners.