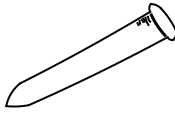
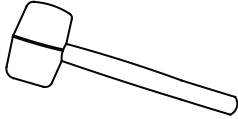



**Tools Required (Not Supplied)**

Ref.	Description	Illustration
1	Sharp ended nail punch	
2	Hammer	
3	Pencil or Marker pen	

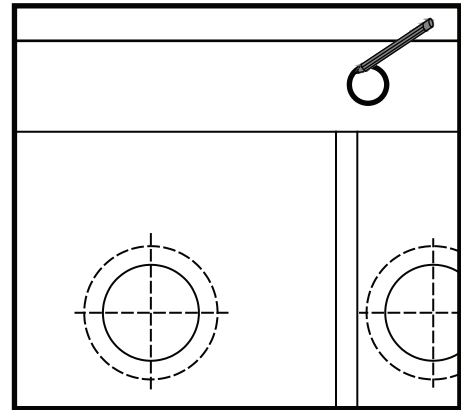
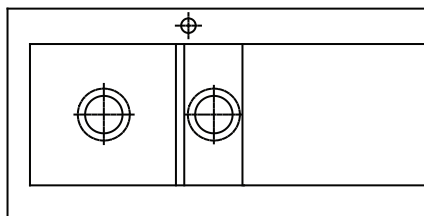


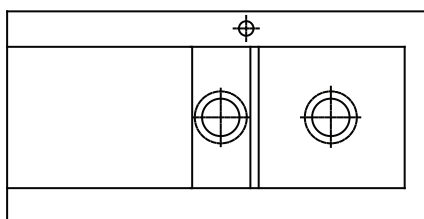
Fig. 2

**Instructions**

1. To establish which hand drainer, you need to be sure to knockout the hole opposite from where you are looking at the sink (Fig. 1).



Right hand drainer



Left hand drainer

Fig. 1

2. Identify the center of the pre-punched hole you wish to use. Mark on the enameled side (Glazed surface) of the sink. **Do not try to knockout the hole from underneath.**(Fig. 2)

3. Place the sink in well supported position. Take a sharp ended nail punch placing the point onto the mark made. Use a hammer strike firmly the top of the punch until the point has been broken through to the under side of the pre-punched hole (Fig. 3) Gradually enlarge the tap hole by carefully chipping away the remaining material until you have remove the entire pre-punched hole (Fig. 4). You should then find the tap mixer you intended to use, will fit the hole.

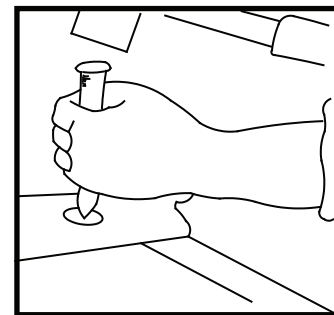


Fig. 3

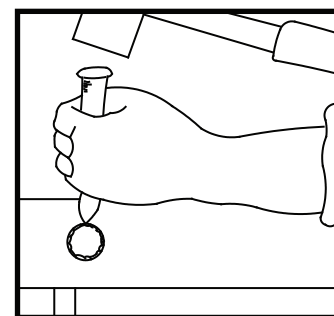


Fig. 4