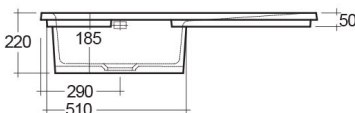
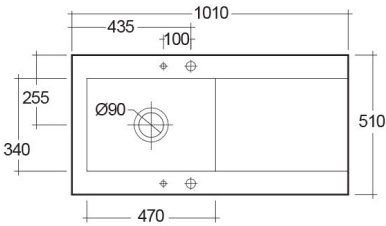


**RAK-DREAM 2 – MATT WHITE – 500**  
**Drop In | Kitchen Sink**

**RAK**  
CERAMICS



**TECHNICAL SPECIFICATIONS**

Suite:	RAK-KITCHEN SINKS
Dimensions:	1010 x 510 mm
Weight:	30 Kg
Color:	MATT WHITE – 500
Vanity space:	yes

Code	Name
OC201LHSL500A	DREAM KITCHEN SINK 2 – MATT WHITE – 500 – Left Hand Side Drain Board
OC201RHSL500A	DREAM KITCHEN SINK 2 – MATT WHITE – 500 – Right Hand Side Drain Board
OC20INTSL500A	DREAM KITCHEN SINK 2 – MATT WHITE – 500 – No Tap Hole

Dimensions: All dimensions in mm. Tolerance of vitreous china & fireclay items:  $\pm 5\%$  for below 200mm and  $\pm 3\%$  for above 200mm; for all other items tolerance  $\pm 1\%$ . Note: Due to a continuing development program to improve design and performance, the manufacturer reserves all rights to vary specifications without prior information. Please note accessories are for photographic use only.