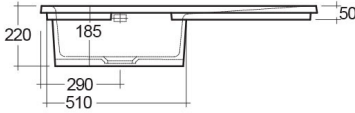
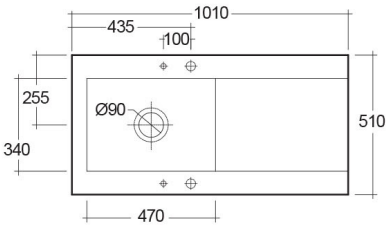


RAK-DREAM 2 – MATT GREY – 503

Drop In | Kitchen Sink

RAK
CERAMICS



TECHNICAL SPECIFICATIONS

Suite:	RAK-KITCHEN SINKS
Dimensions:	1010 x 510 mm
Weight:	30 Kg
Color:	MATT GREY – 503
Vanity space:	yes

Code	Name
OC201LHSL503A	DREAM KITCHEN SINK 2 – MATT GREY – 503 – Left Hand Side Drain Board
OC201RHSL503A	DREAM KITCHEN SINK 2 – MATT GREY – 503 – Right Hand Side Drain Board
OC20INTSL503A	DREAM KITCHEN SINK 2 – MATT GREY – 503 – No Tap Hole

Dimensions: All dimensions in mm. Tolerance of vitreous china & fireclay items: ± 5% for below 200mm and ± 3% for above 200mm; for all other items tolerance ± 1%. Note: Due to a continuing development program to improve design and performance, the manufacturer reserves all rights to vary specifications without prior information. Please note accessories are for photographic use only.