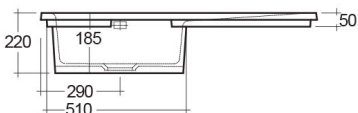
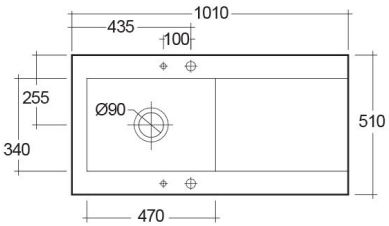


RAK-DREAM 2 – MATT GREIGE – 505
Drop In | Kitchen Sink

RAK
CERAMICS



TECHNICAL SPECIFICATIONS

Suite:	RAK-KITCHEN SINKS
Dimensions:	1010 x 510 mm
Weight:	30 Kg
Color:	Matt Greige - 505
Vanity space:	yes

Code	Name
OC201LHSL505A	DREAM KITCHEN SINK 2 – MATT BEIGE – 505 – Left Hand Side Drain Board
OC201RHSL505A	DREAM KITCHEN SINK 2 – MATT BEIGE – 505 – Right Hand Side Drain Board
OC20INTSL505A	DREAM KITCHEN SINK 2 – MATT BEIGE – 505 – No Tap Hole

Dimensions: All dimensions in mm. Tolerance of vitreous china & fireclay items: $\pm 5\%$ for below 200mm and $\pm 3\%$ for above 200mm; for all other items tolerance $\pm 1\%$. Note: Due to a continuing development program to improve design and performance, the manufacturer reserves all rights to vary specifications without prior information. Please note accessories are for photographic use only.