

Installation Manual



Kitchen tap with accessories

1. Kitchen tap
2. Weight
3. Flexible hose
4. Hand spray with hose

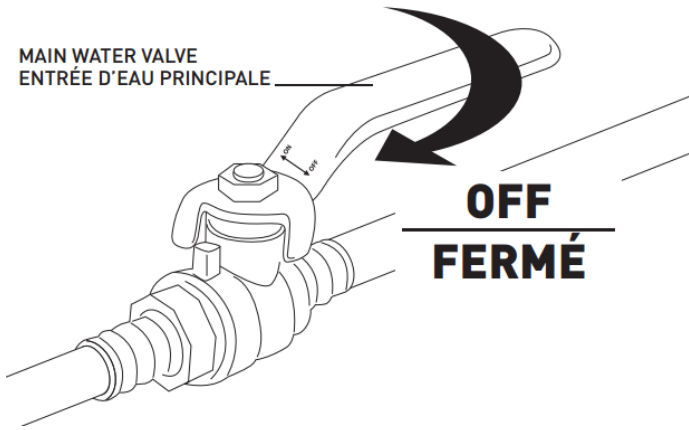
CARE INSTRUCTIONS

Rinse the product with clear water. Dry the product with a soft cloth.

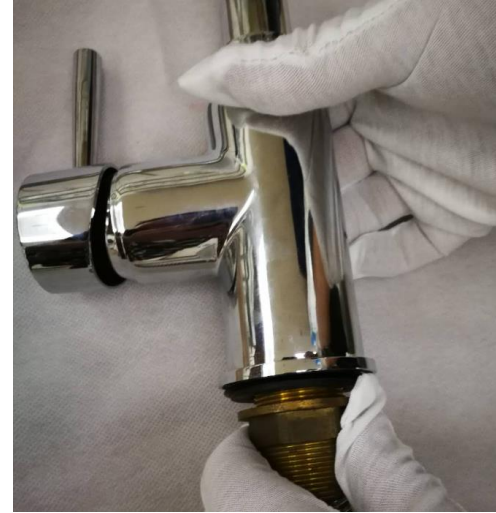
DO NOT:

Use abrasive cleansers, cloths, or paper towels. Use any cleaning agents containing acid, polish, wax, alcohol, ammonia, bleach, solvent or any other corrosive or harsh chemical cleansers

Installation Steps



Step 1: Turn off the main water valve



Step 2: Take off the Anchor kit

Tips for step 2:

<1> If the anchor kit is hard to take off, you can press the brass pipes with fingers to close.

<2> Pull the hand spray to make the hose look like the below picture.



Installation Steps



Step 3: Put the tap through the sink



Step 4: Install the washer and anchor kit



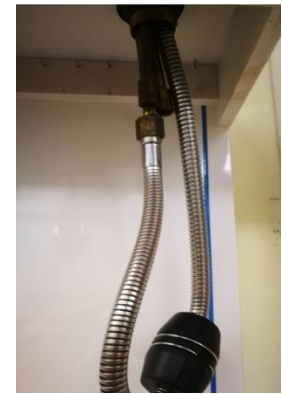
Step 5: Take off the rings from the Weight by hand



Step 6: The weight should now look like this, ready to fit onto the hose

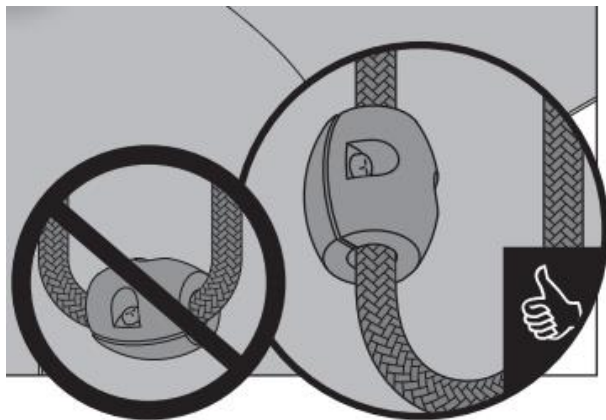


Step 7: Put the Weight onto the hose

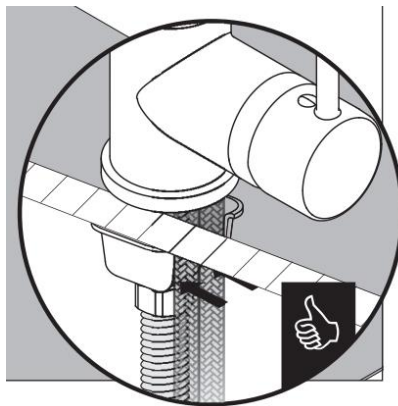


Step 8: Connect the hose to the brass pipe

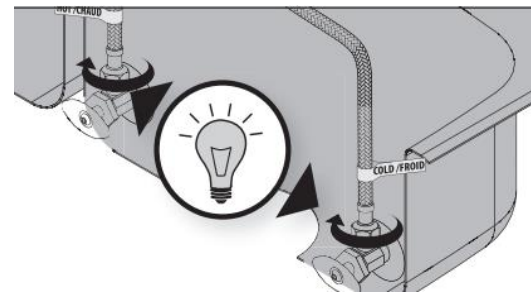
Installation Steps



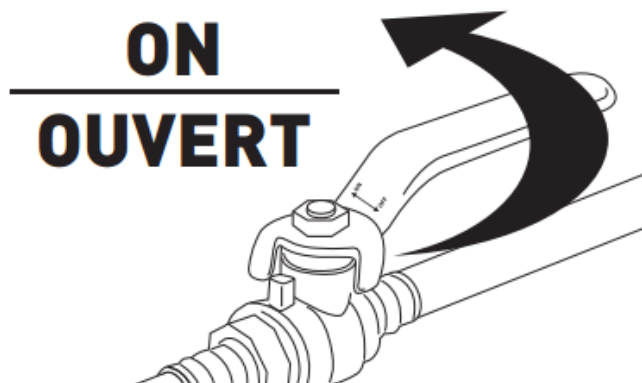
Tips for step 8



Step 9: Connect the braided hose to the tap



Step 10: Connect the braided hose to the water supply



Step 11: Turn on the main water valve



Step 12: Test the tap and check for leaks

Customer Care Helpline

Telephone: 01490 266060

Email: technical@plumbworld.co.uk

Check out our full range of Kitchen Products

Kitchen Sinks

Stainless Steel Kitchen Sinks

Granite Composite Kitchen Sinks

Glass Kitchen Sinks

Ceramic Kitchen Sinks

Franke Kitchen Sinks

Kitchen Taps

Contemporary Kitchen Taps

Traditional Kitchen Taps

Franke Kitchen Taps

Pull out Rinser Kitchen Taps

Instant Boiling Water Taps

Insinkerator Waste Disposal Units

plumbworld
Big brands, small prices.