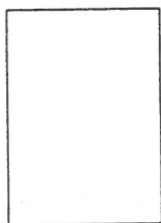
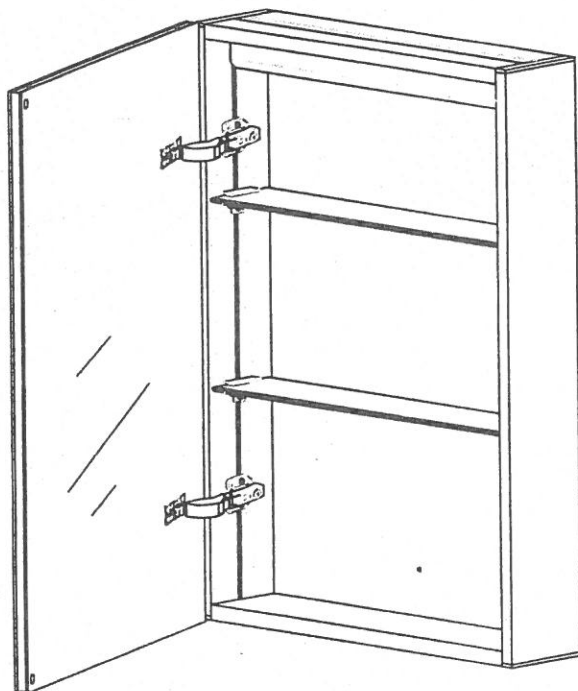


Installation Instruction

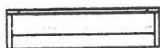


Wall-mounted mirror cabinet

Adjustable stainless steel buffer hinge

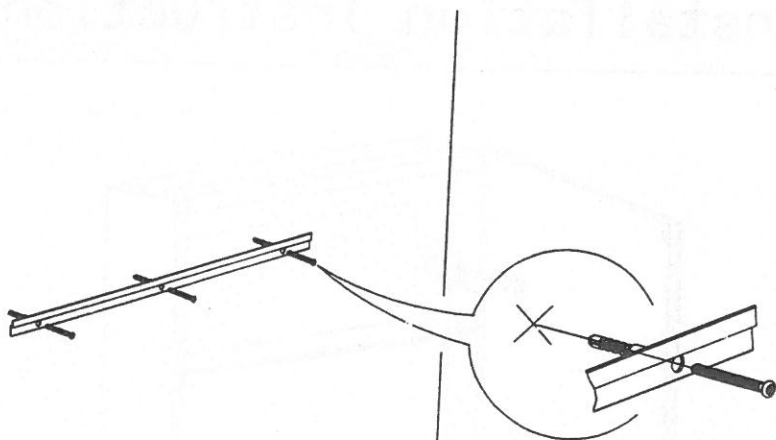
Two layer adjustable tempered glass shelves

Aluminium alloy body



Double-sided environmental copper-free mercury mirror

Note: This specification applies to single door Aluminum Cabinets



X3

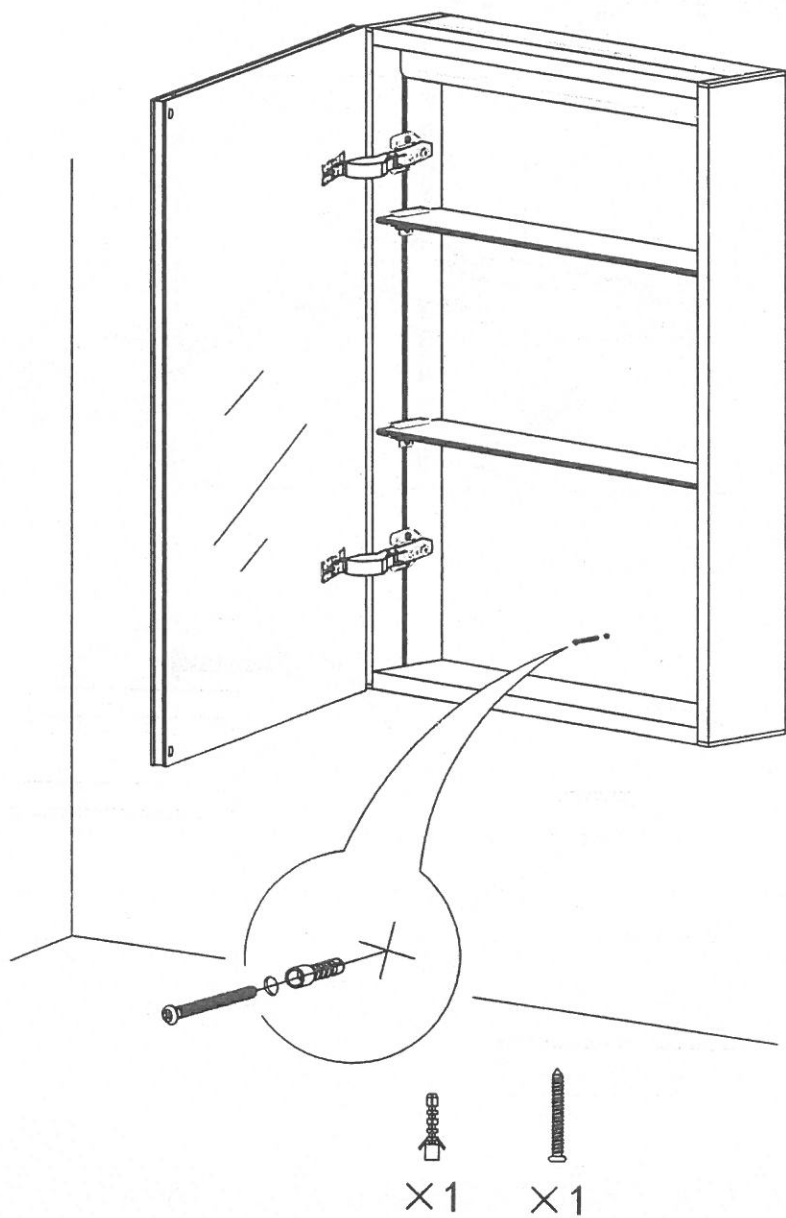


X3

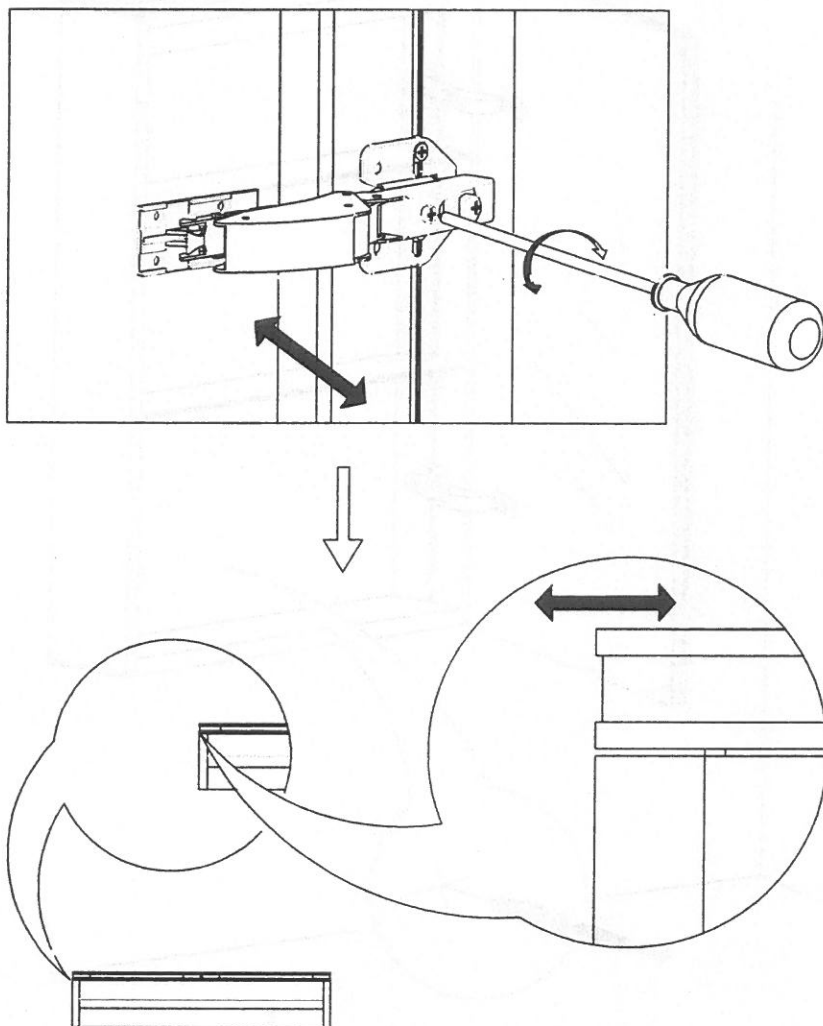


Security Warning:

- The mirror cabinet is very heavy and should not be lifted or installed by just one person
- Pay attention to personal safety when installing



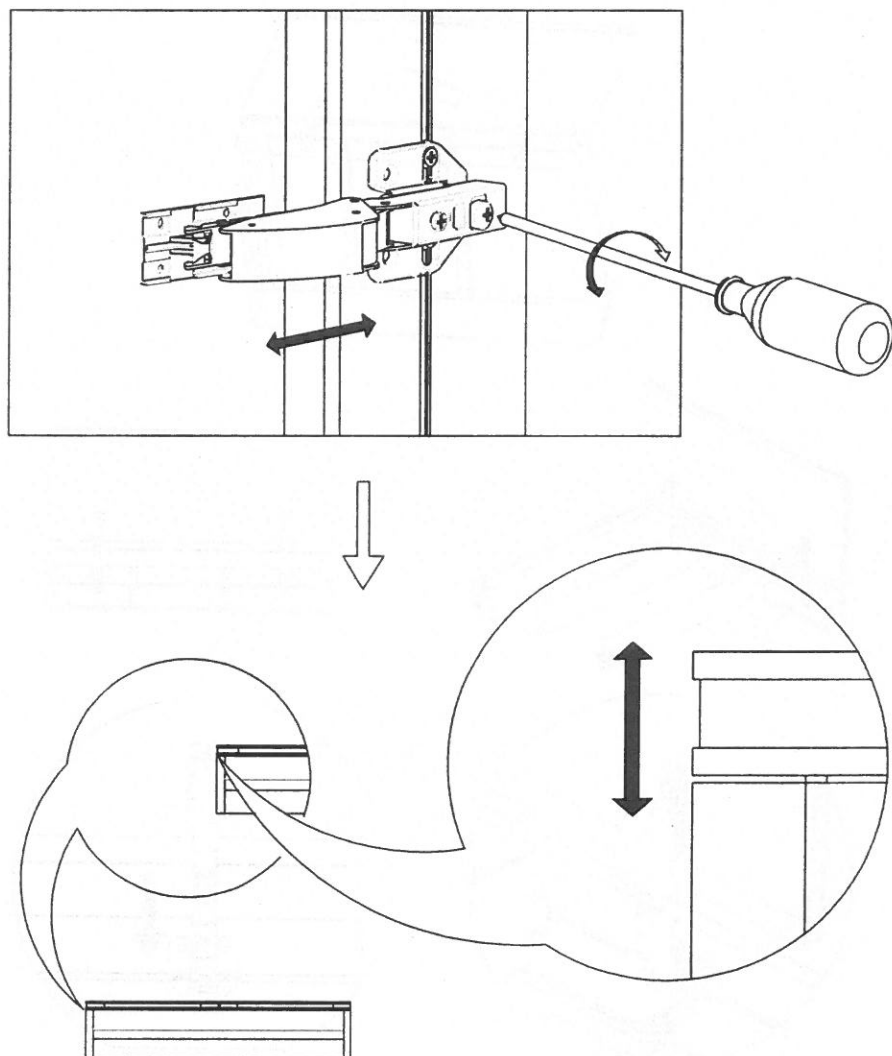
Regulating hinge



Clockwise rotation: The door moved forward to the middle of the mirror cabinet

Counter clockwise rotation: The door moved forward to the sides of the mirror cabinet

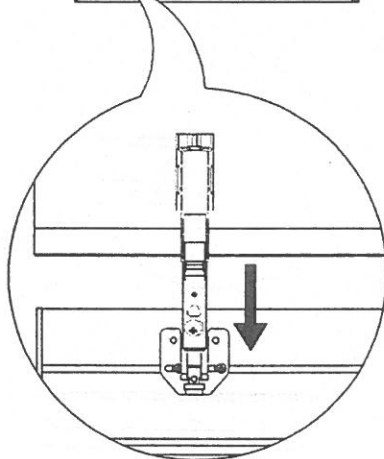
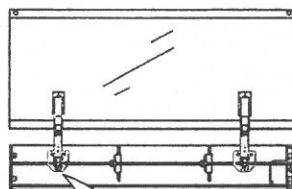
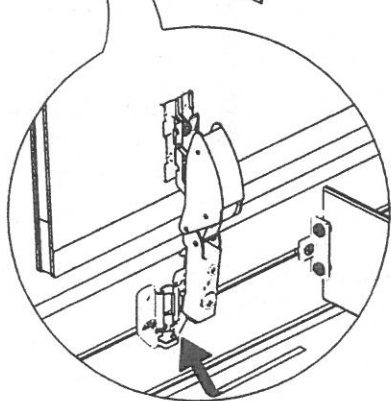
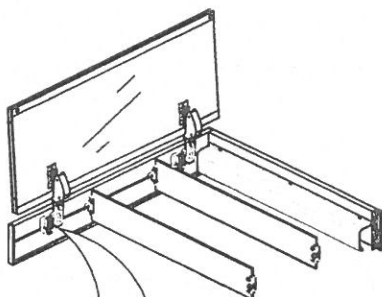
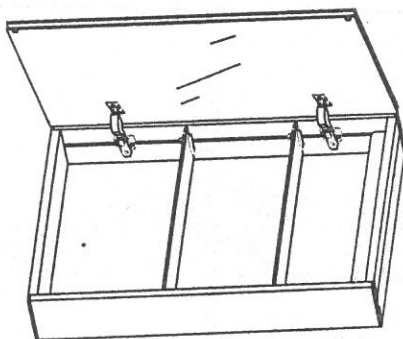
Regulating hinge



Clockwise rotation: The door and the cabinet body distance decreases

Counter clockwise rotation: The door and the cabinet body distance increases

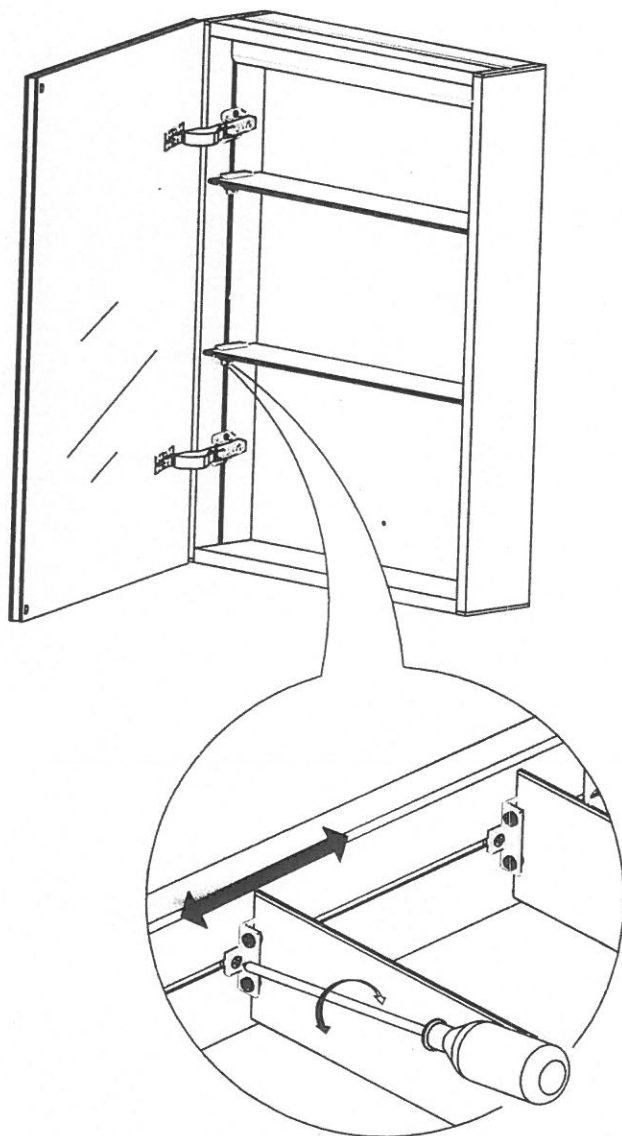
Mounting hinge



Security Warning:

- Do not dismount the door when necessary

Regulating glass shelves



Loosen the screws can adjust the distance of the glass shelves