

Instructions Manual

MULTI-PURPOSE Towel Hangers



Please read these instructions thoroughly before starting installation



BOX CONTENTS :

Wall fixing screw pack	x 1
Shelf fixing screw pack	x 1
Wall bracket	x 1
Shelf / Towel Hanger	x 1

Please check that all components are present and that the product has not suffered any damage during transit.

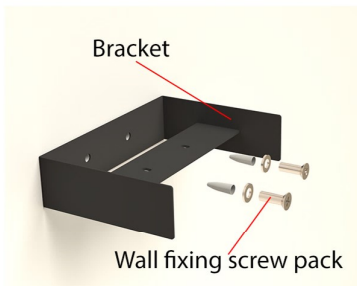
Please check the towel hanger is compatible with the radiator you have purchased.



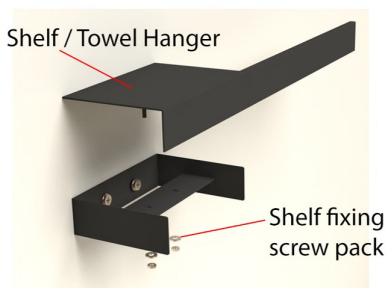
This product must be fitted by a fully qualified installer



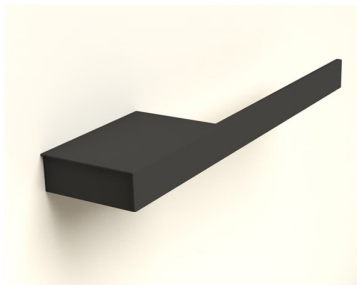
The towel hanger can be fitted before or after the radiator depending on the site or installers requirements.



Check position on wall is correct with the radiator.
Level and mark wall for drill hole position.
If fitting to stud wall, replace wall plugs with appropriate wall fixings.
Drill holes with correct size bit for fixing used.



Once bracket is connected to wall, place shelf in position - making sure connections are lined up.



Check all fixings are secure and installation is level.

* Material : Mild Steel

Eastbrook 
Eastbrook Road, Gloucester GL4 3DB
Technical Helpline : 01452 317890
Mon - Fri / 8am - 5pm
Email : technical@eastbrookco.com