

# Mira Platinum Dual High Pressure



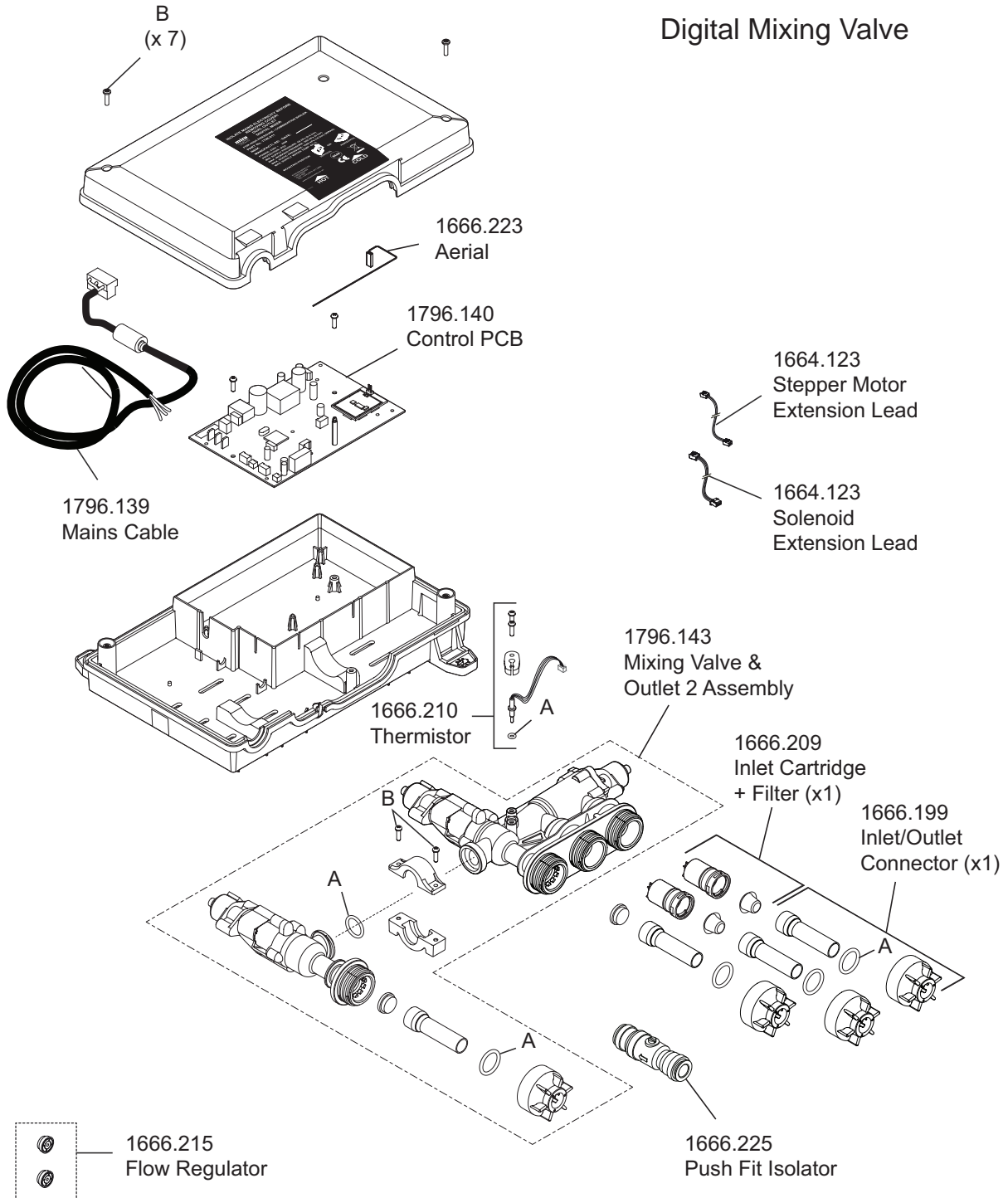
(2012 - current N85K)

Ceiling Fed - 1.1796.001

Rear Fed - 1.1796.003

Valve & Controller Only - 1.1796.005

## Digital Mixing Valve



1666.212 Seal Pack - Components Identified 'A'  
 1666.213 Screw Pack - Components Identified 'B'

# Mira Platinum Dual High Pressure



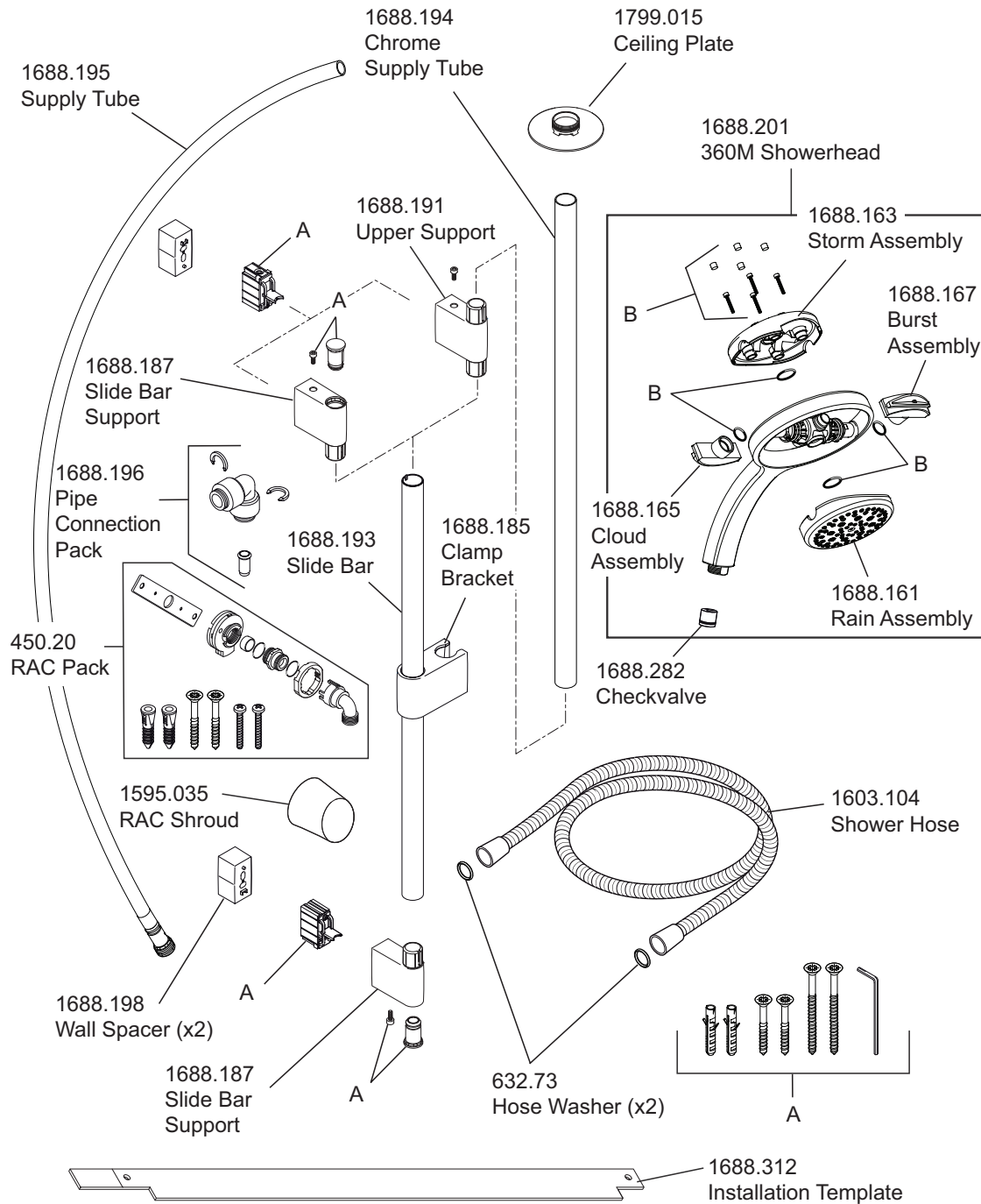
(2012 - current N85K)

Ceiling Fed - 1.1796.001

Rear Fed - 1.1796.003

Valve & Controller Only - 1.1796.005

## Shower Fittings - Showerhead



1688.184 Seal and Screw Pack - Components Identified 'B'.

1688.190 Classic Fittings Component Pack - Components identified 'A'.



Mira Platinum shower fittings on the following page

# Mira Platinum Dual High Pressure



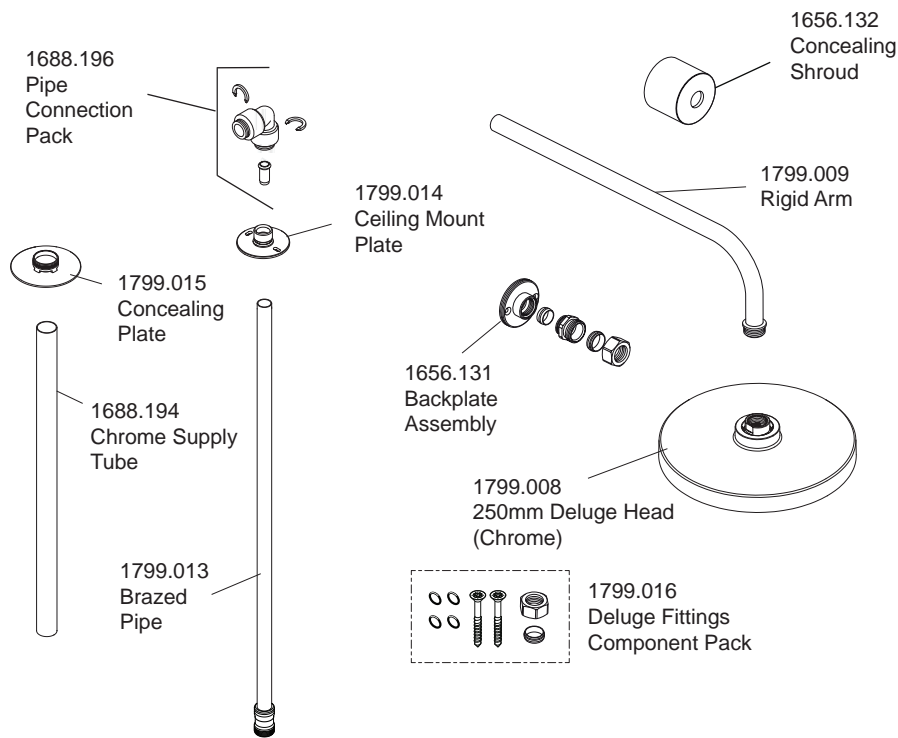
(2012 - current N85K)

Ceiling Fed - 1.1796.001

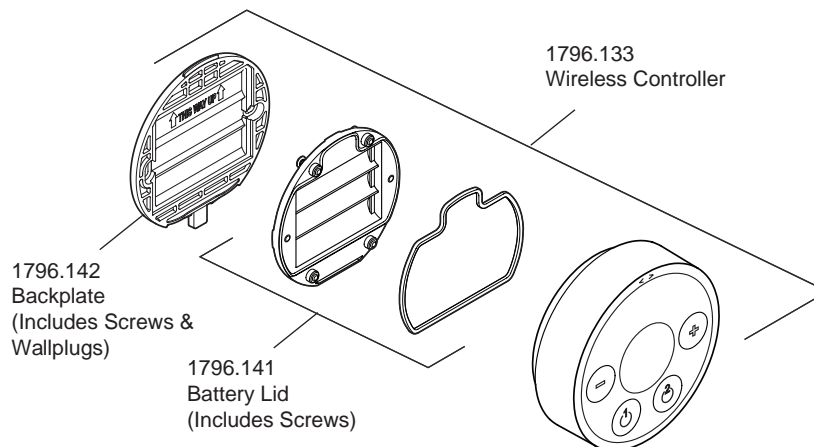
Rear Fed - 1.1796.003

Valve & Controller Only - 1.1796.005

## Shower Fittings - Deluge Head



## Digital Mixer - User Interface



Mira digital showers are provided with a five year warranty and spare parts are available free of charge during that period with a valid proof of purchase. For showers outside of the warranty period, spare parts are available to purchase direct, alternatively we have Mira technicians who can repair your shower for you. For further information visit [www.mirashowers.co.uk](http://www.mirashowers.co.uk) or to check availability of spare parts for this shower or enquire about our repair service please contact our customer service on **0844 571 5000**.



## **Check out our full range of Showers**

Electric Showers

Digital Showers

Mixer Showers

Power Showers

Smart Showers

Shower Towers

## **From Top Shower Brands**

Mira Showers

Aqualisa Showers

Triton Showers

Gainsborough Showers

## **Shower Pumps can upgrade your showering experience even more**

Stuart Turner Shower Pumps

Salamander Shower Pumps

Grundfos Shower Pumps

**plumbworld**  
**Big brands, small prices.**