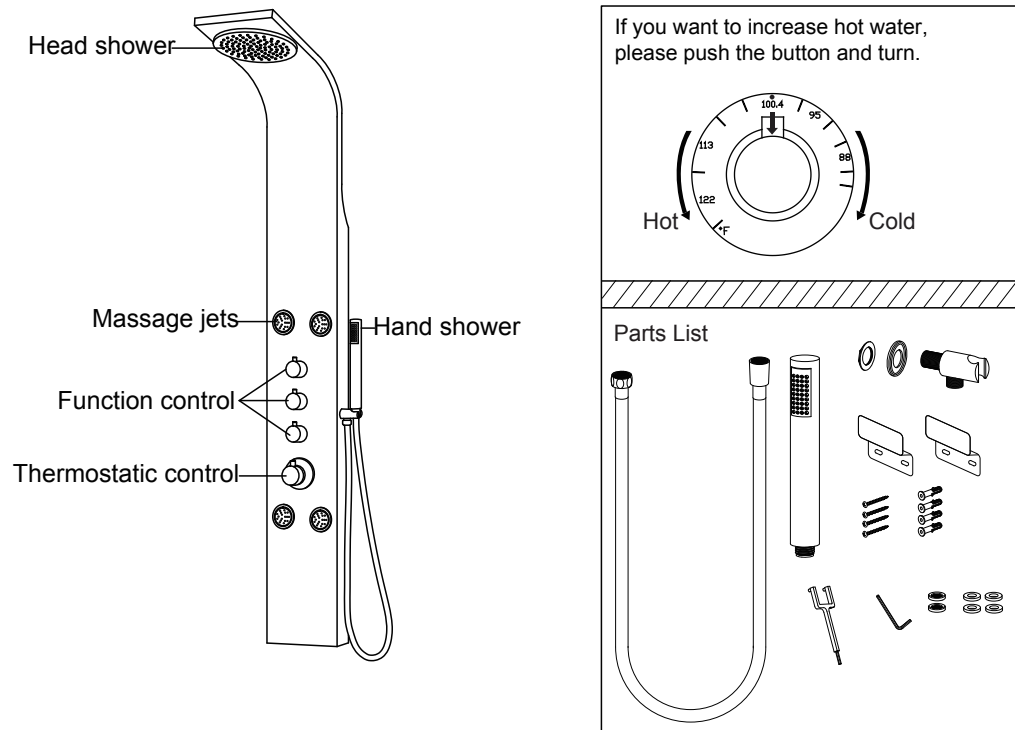
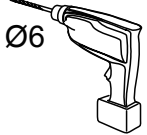


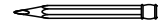


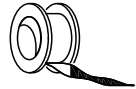
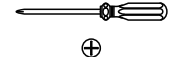
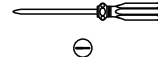


# INSTALLATION

## Shower Panel

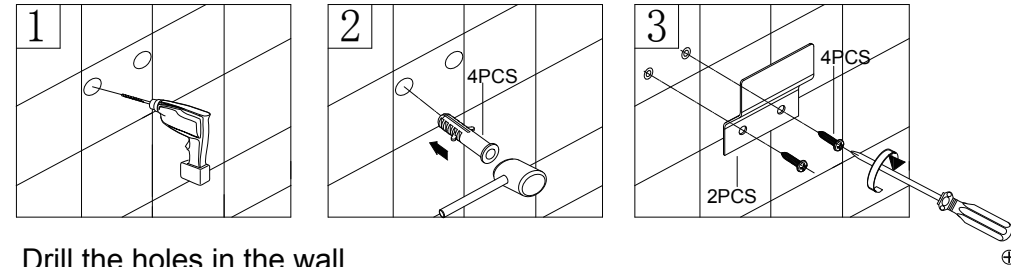


### FOR INSTALLATION YOU WILL REQUIRE

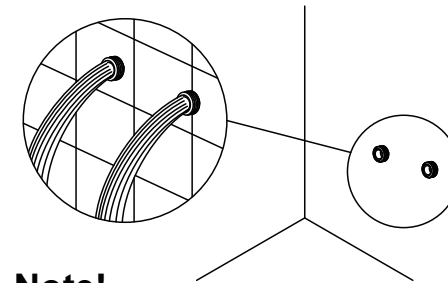
				
Electric Drill	Tape measure	Wrenches	Pencil	Hexagonal wrench
				
Hammer	Sealing Tape	Screwdriver	Screwdriver	

Note: Always check the walls for pipes and wires before drilling.

### Steps:

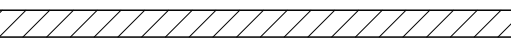


1. Drill the holes in the wall.
2. Insert the wall plugs inside the holes.
3. Tighten the screws to the wall with wall mounting brackets.

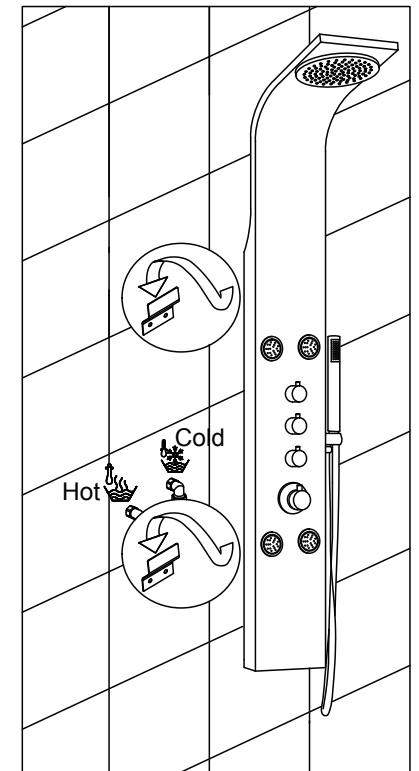
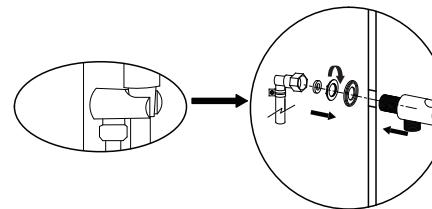


### Note!

Before assembly, flush the water supply pipes thoroughly to remove debris (allow the water to run with the main stopcock open for about 3 mins), otherwise dirt particles might affect the function of the shower panel!



### Shower holder installation guide



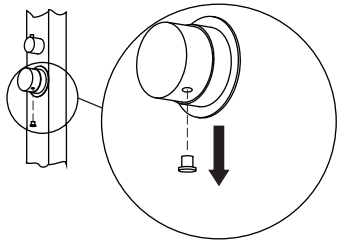
Note: No harsh abrasive cleaning agents or materials can be used. Use a clean damp cloth only.



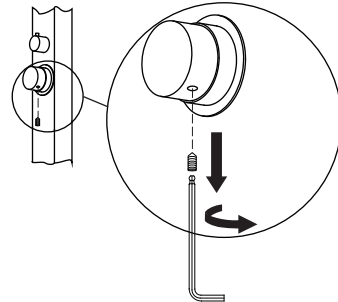
NOTE: PLEASE CARRY OUT THE FOLLOWING STEPS,IF CLEANING /MAINTENANCE IS REQUIRED

### Removal process

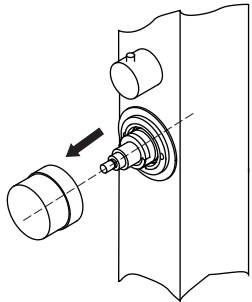
① Take off cap



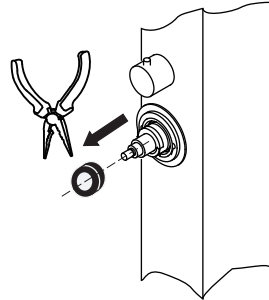
② Loosen HEX screw off with hexagonal wrench



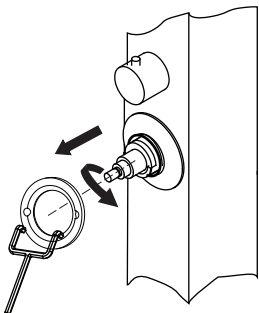
③ Take off head



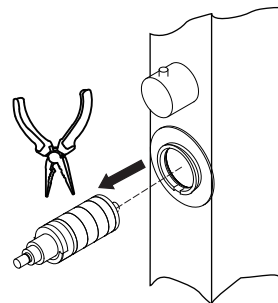
④ Take off ring



⑤ Unscrew the brass ring from the valve using the tool

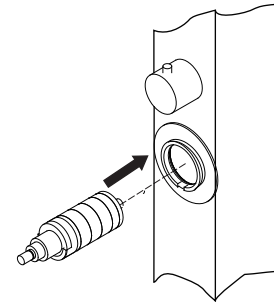


⑥ Remove the valve and clean: Run under warm water and use a toothbrush or similar to remove any debris or limescale

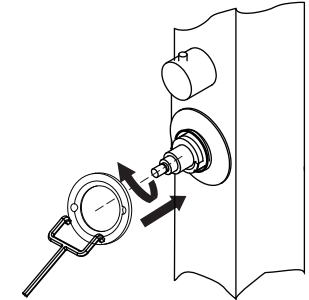


### Installation process

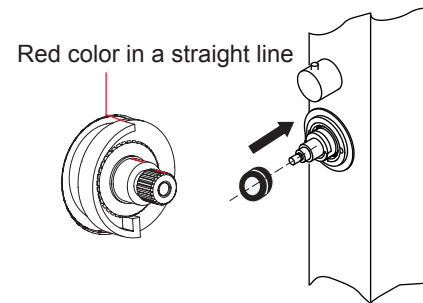
① Put the valve back



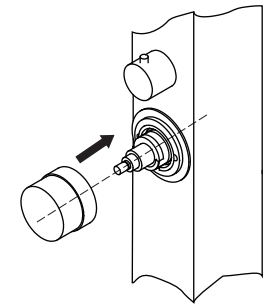
② Put brass ring on top of valve



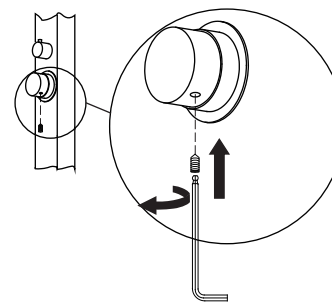
③ Put ring in place



④ Press the button on the valve and put on the head as below ensuring the screw hole pointing to the front



⑤ Use hexagonal wrench to fix the HEX screw tightly



⑥ Put on cap

