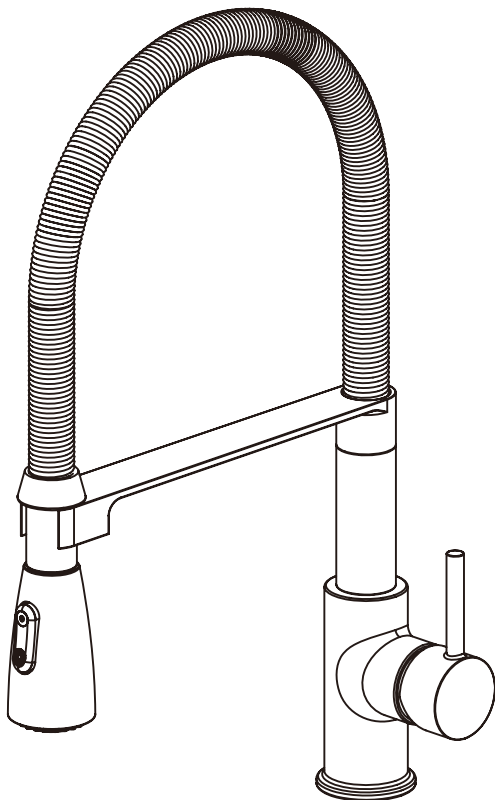


# Mono Sink Mixer

## Fitting instructions

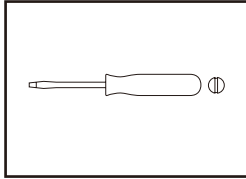
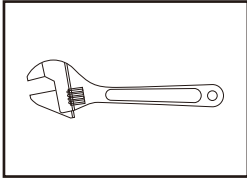


**Please note: Tap head shown is for illustration purposes only.  
Please keep these instructions for future reference and request of replacement parts.**

We have taken great care to ensure that this product reaches you in perfect condition. However should any parts be damaged or missing please contact your point of purchase. This does not affect your statutory rights. In addition if you require replacement parts your point of purchase will be happy to assist.

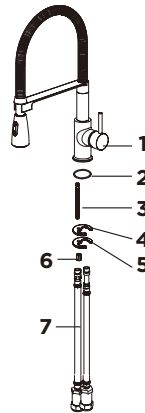
<b>Contents</b>	<b>Page</b>
<b>1. Tools required</b>	<b>3</b>
<b>2. Parts Supplied</b>	<b>3</b>
<b>3. Before you start</b>	<b>3</b>
<b>4. Warning from your Water Supplier</b>	<b>4</b>
<b>5. Installation</b>	<b>5-6</b>
<b>6. Aftercare</b>	<b>7</b>

## Tools required (Tools not supplied)



## Parts Supplied

NO.	Description	Qty
1	Tap Body	1
2	Anti-Rotational Washer	1
3	Fixing Stud	1
4	Rubber Horseshoe Washer	1
5	Metal Horseshoe Washer	1
6	Fixing Nut	1
7	Braided Connectors	2



## Before you start

BS 8558 recommends hot water should be stored and distributed at a temperature of not less than 60°C which will help minimise the build-up of limescale. For further details contact your Local Water Authority.

This taps should be installed in compliance with the Water Regulations.

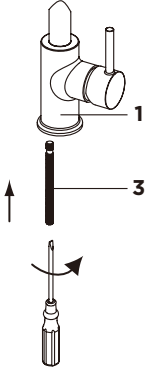
- (a) Identify all components and check pack contents.
- (b) Turn off water mains supply.

## **Warning from your Water Supplier**

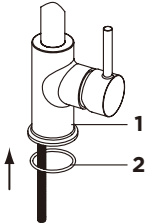
**This type of tap will not maintain an appropriate tap gap, because part of the tap assembly (the hose attachment) can fall below the spill over level of the sink. Therefore it must not be directly connected to the drinking water supply without the protection of an appropriate backflow arrangement, as agreed by your local water supplier. If the tap assembly is required to be fed from storage, this tap may require a water pressure higher than that provided by a normal storage gravity fed system (e.g. typical gravity fed system - 0.5 bar). If boosting/pumping of the system is required advance notification to the local water supplier may be required. The tap assembly must only be supplied via a wholesome source of water (hot and cold supplies). It is important to ensure that this tap is connected in accordance with the Water Supply (Water Fittings) Regulations (Byelaws in Scotland).**

# Installation

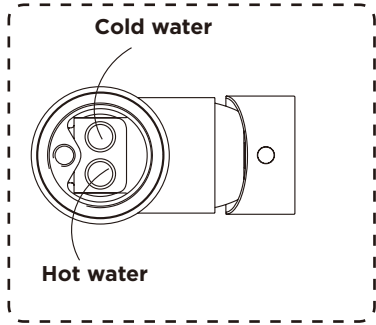
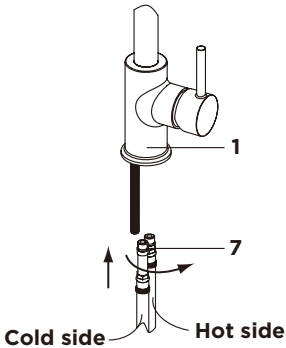
1. Fit Fixing Stud(3) to Tap Body(1) and tighten it.



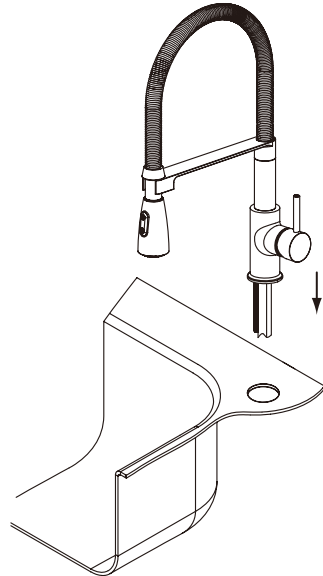
2. Ensure that Anti-Rotational Washer(2) has been fitted to Tap Body(1).



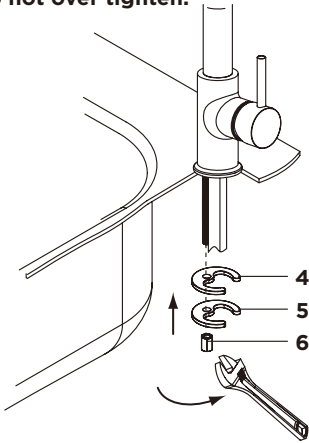
3. Screw 2x Braided connectors(7) into Tap Body(1), do not over tighten.



4. Locate the tap assembly down through the tap hole in sink.

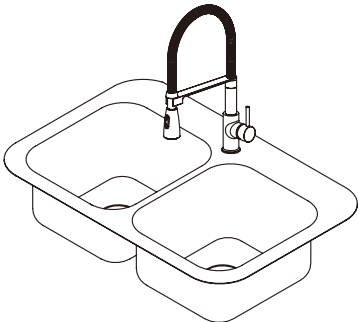


- 5. Fit Rubber Horseshoe Washer(4) and Metal Horseshoe Washer(5) onto the Fixing Stud(3). And then fix Fixing Nut(6) onto the Fixing Stud(3). Do not over tighten.**



- 6. Fit Braided Connectors(7) to the water supply using suitable plumbing joints.**

- 7. Turn on the hot and cold and mains water supply. Check for leaks immediately. It is always advisable at this stage to flush out the system. To do this, open both valves fully and allow water to flow for approx. 1 minute. This will remove any foreign matter within the installation.**



- 8. Finally turn on all the water heating arrangements.**

## Aftercare

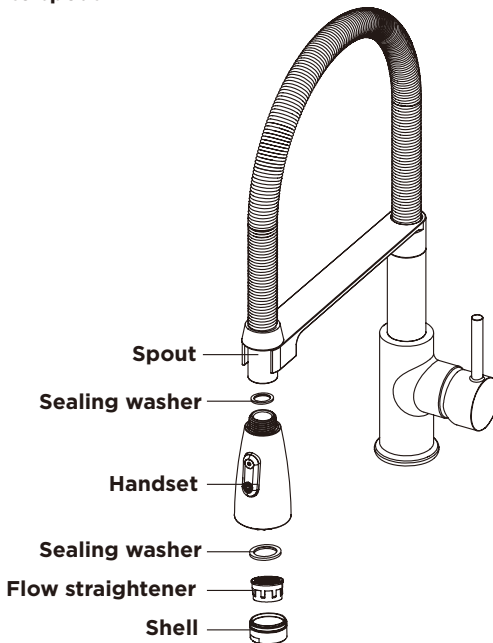
### Cleaning the flow straightener (if no flow or low flow rate)

Before carrying out any maintenance, turn off the mains water supply. If unsure contact a qualified tradesman.

Remove the Handset and sealing washer from the spout.

Remove the shell, flow straightener and sealing washer from the spout, clean thoroughly under cold water to remove any build up of limescale or debris.

Re-fit the flow straightener, sealing washer and shell to handset, then fit handset and sealing washer to spout.



### General cleaning

Whilst modern plating techniques are used in the manufacture of these fittings, the plating will wear if not cleaned properly. The safest way to clean your product is to wipe with a soft damp cloth. Stains can be removed using washing up liquid. All cleaning powders and liquids will damage the surface of your fitting even the non-scratch cleaners.

