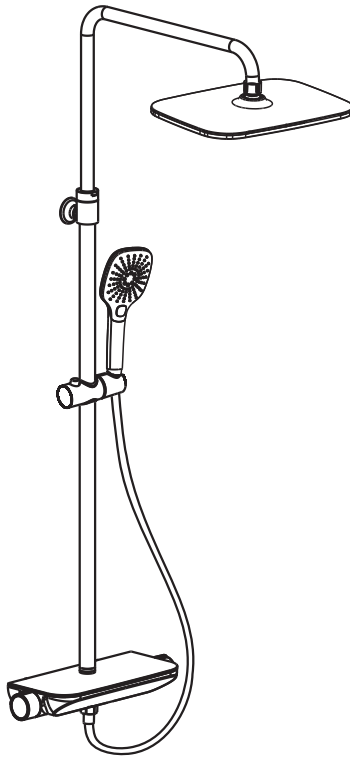


Shelf Mixer Thermostatic Shower Set General Installation Instruction



Head Shower, Hand Shower & Mixer may vary,
depending on model chosen.

MUST READ – IMPORTANT

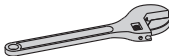


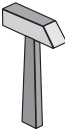


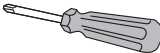
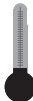
We highly recommend this instruction is read carefully before you start installation. And please retain it after installation for future reference and maintenance.

First, open the box and check all items are present as per this instruction.

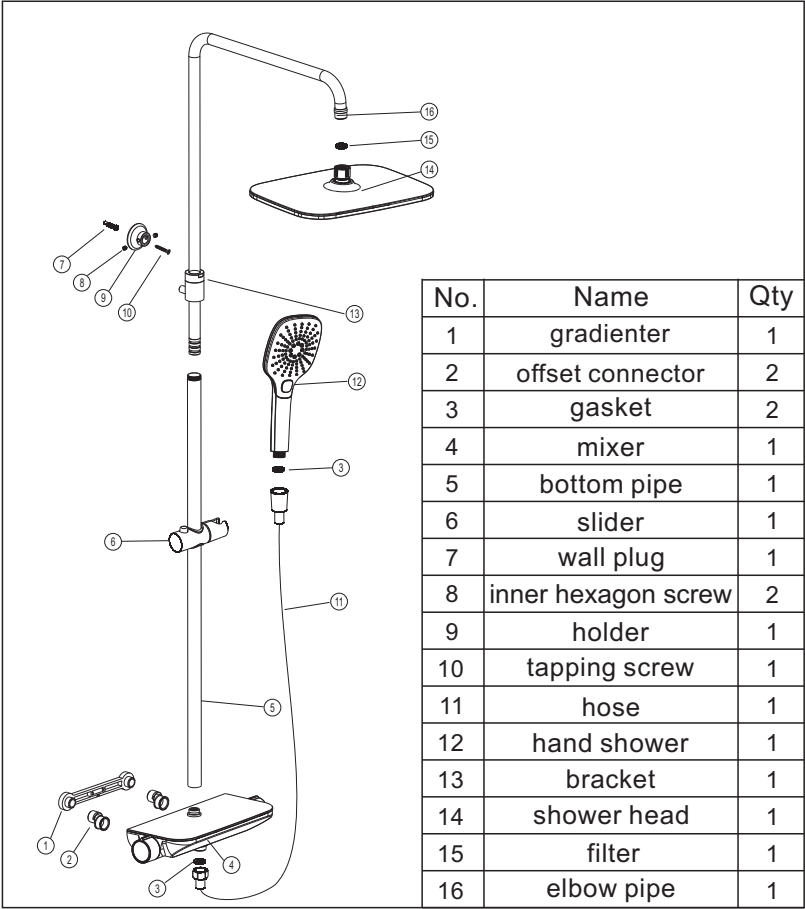
Also make sure any other items that you need are available too for e.g. compression fittings, wrench, PTFE tape.

Installation must comply with Local/ National supply regulations/ Authority and byelaws inc. Building and Plumbing regulations.

YOU MAY NEED

ASSEMBLY & PARTS LIST



OPERATING SPECIFICATIONS

Hot Water Supply Temperature

Maximum: 85°C

Minimum hot water supply temperature: 10°C higher than the maximum required mixer temperature.

Operating Pressures:

Maximum operating pressure 5 bar

Minimum operating pressure 0.5 bar

GENERAL INSTALLATION

This is a mixing system and hot and cold supplies must be reasonably balanced for proper flow (outlet).

Prior to making the inlet connections; please ensure all pipes are properly and thoroughly flushed to clear any debris etc.

You should satisfy yourself that this is clean. Failure to do so may result in a low flow rate from mixing device.

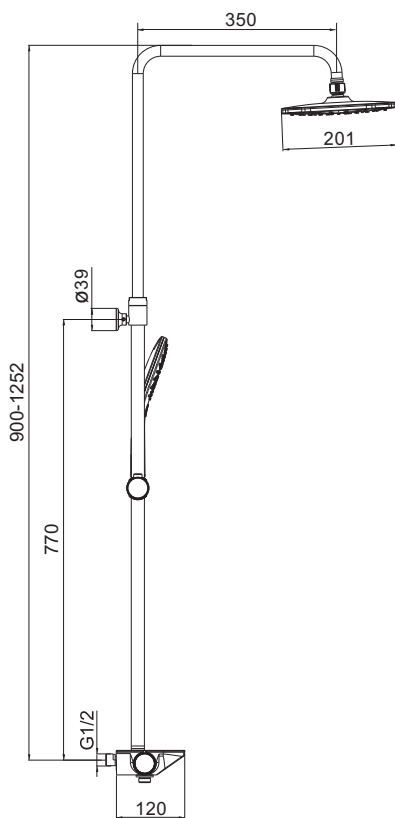
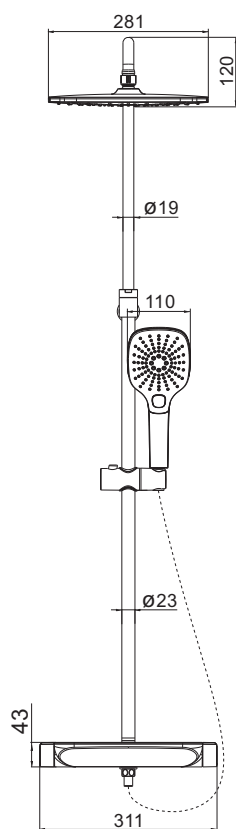
We strongly recommend fitting of isolating valves to the inlet pipes to assist in future maintenance of the mixer.

Please take great care when installing this valve not to damage its surface.

Use a reducer to the inlet feeds if water pressure is above 5 bar.

DIMENSIONS

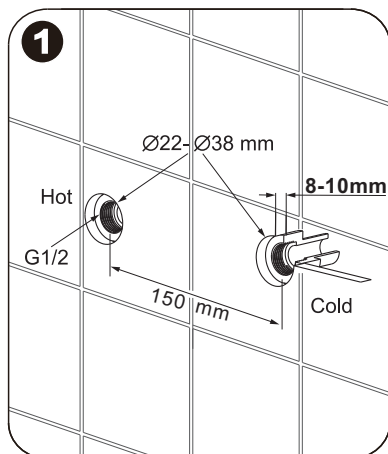
Head shower, hand shower & mixer may vary, depending on model chosen.



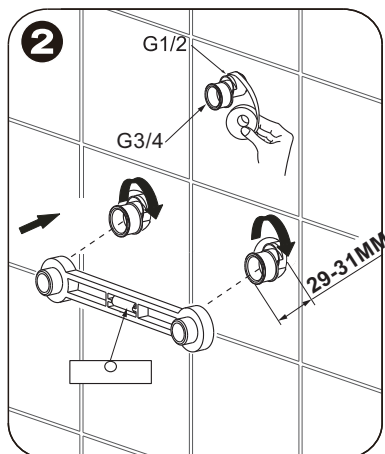
INSTALLATION

Clear/ Rinse pipework thoroughly and carefully for a reasonable amount of time prior to fitting the valve. No dirt, metal, wood shavings, debris or foreign material should block the filters fitted on the inlets of the valve.

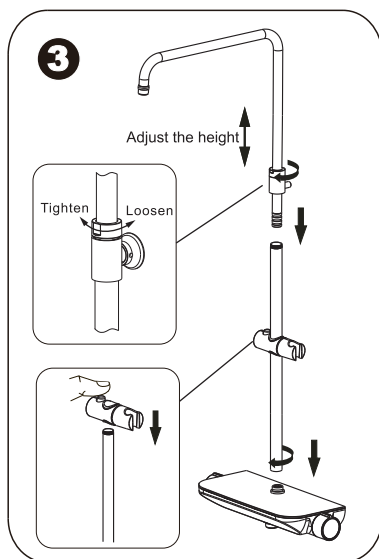
WARNING: Before drilling any holes, ensure no cables or pipes are in the way.



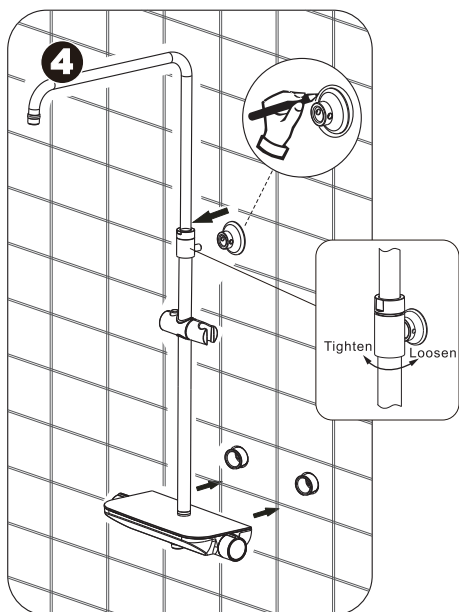
1. Inlet pipework should be at 150mm pipe centers.



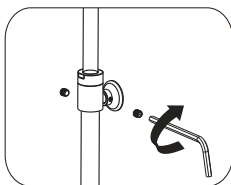
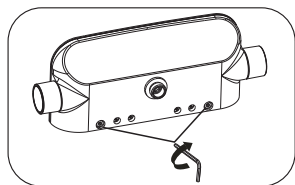
2. Wrap PTFE tape to the offset connectors and fix to the wall pipes. Cover the gradienter on the offset connectors and adjust the level to make sure the air bubble located in the middle of the adjustable window.



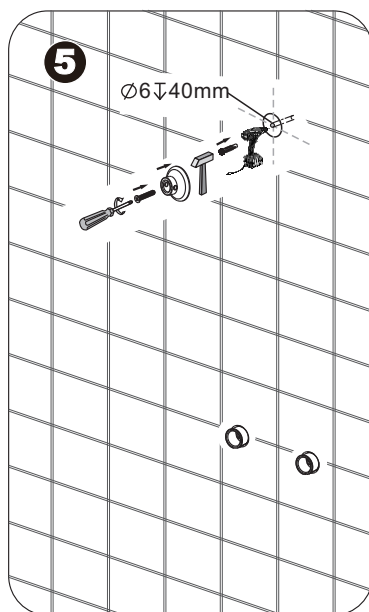
3. Fit the slider onto the straight pipe, then insert the elbow pipe and push firmly to engage the O-ring seal into straight pipe, screw the straight pipe into the bracket. Loose the locking nut on bracket to adjust the desired shower rail height and re-tighten. Finally connect the assembled rail pipes to the mixer top outlet and tight up by hands.



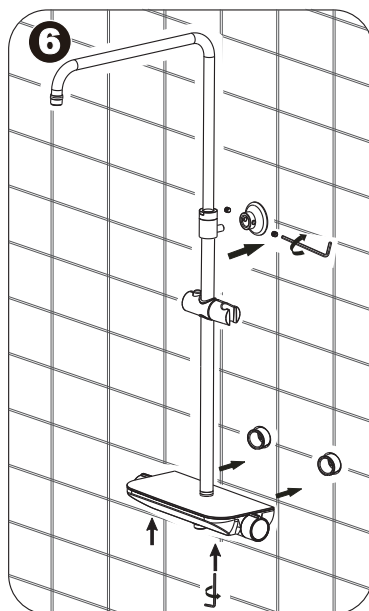
4. Insert the offset connectors into the mixer inlets and make sure the mixer attach onto the wall without gap. Put the holder onto the rail bracket and attach to the wall to mark the location. (To loose the nut on the rail bracket to adjust the rod direction if the rod did not face to the wall.)

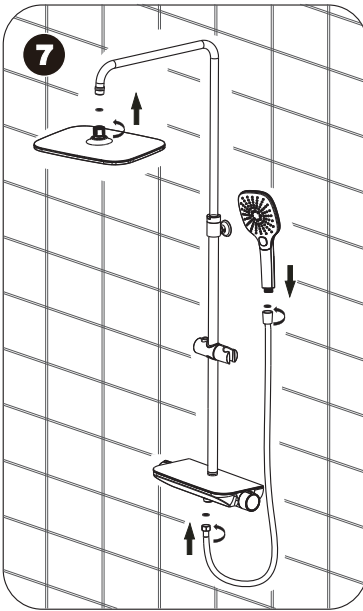


6. Reattach the assembled shower rail and mixer onto the wall and insert the bracket rod into the holder fixed. Lock up the screws at the bottom of the mixer and the both sides of the rail bracket by the hex wrench provided. (Please check the hot inlet is with a red mark and the cold inlet with a blue mark.)

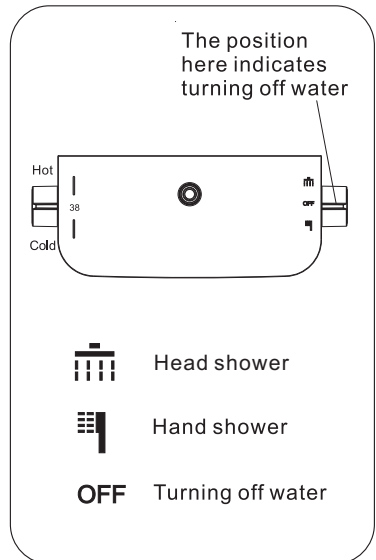
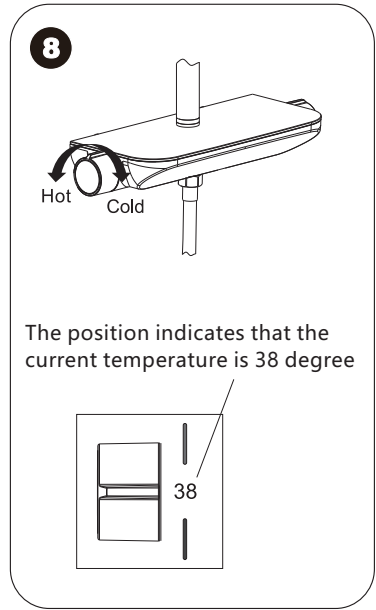


5. Drill and insert the wall plug into the wall, then fix the holder by tapping screw supplied.





7. Connect the shower head, hand shower and hose to the mixer and shower rail.
8. Turn the flow control handle fully on to start the water flow from head shower or hand shower.
9. Turn the thermostatic handle fully clockwise, this is the maximum cold temperature position, ensure that the water runs cold.
10. Turn the thermostatic handle back to the central stop position and check that the water temperature settles at 38 degree by running the water for 5 minutes.



PRODUCT AFTERCARE

Due care is required to maintain the product and care must be taken whilst cleaning for brand new refreshing looks at all times.

Use a small amount of soap and a damp cloth to clean the accessories, then perform a simple rinse and wipe dry. After each use, dry the surface of the accessories to avoid green and yellow spots on the product.

Please do not use rough sponges or detergents during the cleaning process. Do not scrub or scour.

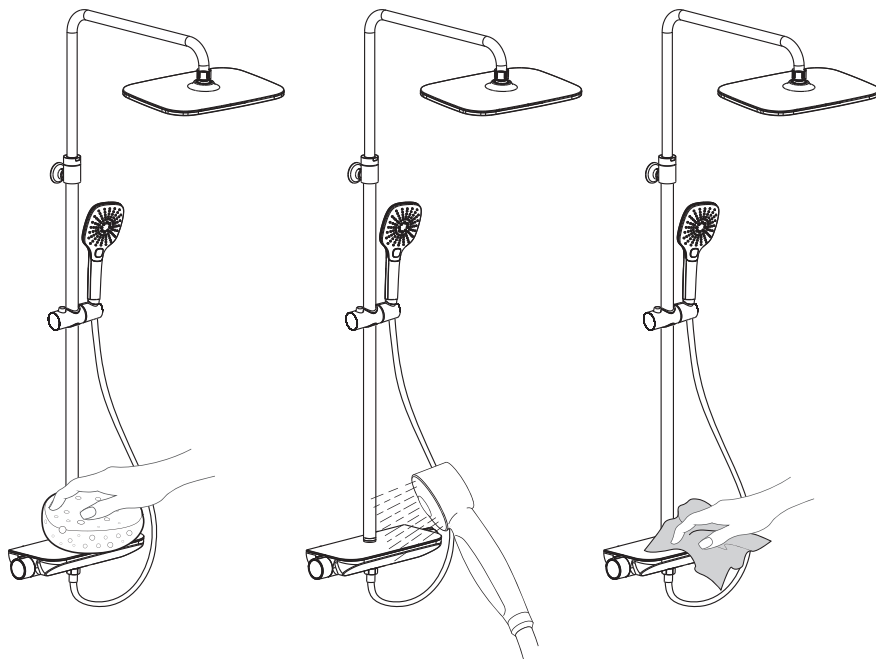
Do not use cleaning agents containing solvents or acidic substances.

Do not use descaling agents, practical vinegar, or cleaning agents containing waxy acid.

Do not use cream cleaners or cleaners containing bleach.

Do not use abrasive cleaning agents.

If above instructions are not adhered to, this will invalidate your guarantees.



TROUBLE SHOOTING

If you followed the instructions carefully and your mixer still does not work properly, take these corrective steps.

Problem	Possible Cause	Action
Outlet temperature too cold	<ul style="list-style-type: none"> ● No hot water reaching mixer ● Filter block ● If the fault has been present since the mixer was installed it is possible that the inlets were installed incorrectly ● The water supply will be colder in winter months due to outside temperature 	<ul style="list-style-type: none"> ● Check the water supply for any blockages ● Clean filters ● Check installation-Hot on the left /cold on the right ● It may be necessary to adjust the hot supply. i.e. increase the hot water temperature setting on boiler
Outlet temperature too hot	<ul style="list-style-type: none"> ● No cold water reaching mixer ● Filter block ● If the fault has been present since the mixer was installed it is possible that the inlets were installed incorrectly ● The water supply will be hotter in summer months due to outside temperature 	<ul style="list-style-type: none"> ● Check the water supply for any blockages ● Clean filters ● Check installation-Hot on the left /cold on the right ● It may be necessary to adjust the hot supply. i.e. decrease the hot water temperature setting on boiler
Only hot or cold water from valve outlet	<ul style="list-style-type: none"> ● Possible that the inlets have been installed the incorrect way around ● If only cold water is coming out of the mixer it is possible there is a cartridge fault ● Filters blocked 	<ul style="list-style-type: none"> ● Check that the inlets are installed correctly-Hot on the left/cold on the right ● Remove and check the condition of the thermostatic cartridge ● Clean filters

Cannot Adjust temperature	<ul style="list-style-type: none"> ● Possible that the cartridge is sticking due to a lime scale build up 	<ul style="list-style-type: none"> ● Remove the thermostatic cartridge and service.
Poor flow rate	<ul style="list-style-type: none"> ● Insufficient water pressure ● Filters partially blocked ● Flow valve not fully opening 	<ul style="list-style-type: none"> ● The required minimum water pressure is 0.5bar(5Mpa) ● Clean filters ● Fully turn on the flow handle
Water leaking from shower head when the valve is turned off/closed	<ul style="list-style-type: none"> ● This can be normal for a short period of time after the shower has been used ● Check that the pressures do not exceed that stated for the product 	<ul style="list-style-type: none"> ● N/A ● If pressures are too high adjust as necessary, refer to technical datar
Water leaking from shower mixer	<ul style="list-style-type: none"> ● Check that the pressures do not exceed that stated for the product 	<ul style="list-style-type: none"> ● Check that the pressures do not exceed that stated. If pressures are too high adjust as necessary. Refer to technical data