



IMPORTANT
This installation manual is for use with
F-4N1, F-HC1100, F-HC3300, F-C1100 taps.



InSinkErator NeoChiller

Installation, Care & Use

Model: CWT150





IMPORTANT SAFETY INFORMATION

In order to use your appliance to its best, we advise reading these instructions carefully as they contain useful information.

- Keep this book for later use.
- When you have removed the packaging, make sure that the appliance is not damaged. Any damage must be reported to your carrier within 24 hours.
- If the machine has been put down or turned upside down, wait for at least 8 hours before putting it into operation.
- Make sure that installation and electrical wiring are carried out by a qualified technician according to the manufacturer's instructions and to the local norms in force. The electrical system must be equipped with an effective earth according to the law (46/90).
- Do not move unit using inlet/outlet tubes or fittings. May cause internal damages and improper operation of unit.
- In Australia and New Zealand, all plumbing and electrical work must be completed by a qualified tradesperson. The installation must conform to AS/NZS 3500.1 and AS/NZS 3500.2
- Please refer to the Installation, Care & Use manual packaged with other components in the system for additional Important Safety Information and installation instructions.



GENERAL PRECAUTIONS AND SUGGESTIONS

Before carrying out any maintenance or cleaning operation, remove the plug from the mains socket.

- Do not pull on the supply cable in order to remove the plug from the socket.
- When the appliance has been installed, make sure it is not resting on the mains supply cable.
- The data and characteristics indicated in this manual do not bind the manufacturer, who reserves the right to make all the modifications deemed necessary, without having to give prior notice or replacement.



WHAT YOU SHOULD KNOW BEFORE YOU BEGIN

For your satisfaction and safety, read all instructions, cautions and warnings before installing or using this Chiller.

- **IMPORTANT:** After unpacking the Chiller, place the unit upright for 1 hour before connecting power.
- The F-C1100 Cold Only Water Tap is designed for use with the CWT Chiller as a system (with optional InSinkErator filtration system).
- For best results, the cold only water tap should be installed prior to installing the Chiller.
- This particular unit is not intended for commercial use.
- Make sure that all electrical wiring and connections conform to local codes.
- The Chiller must be connected directly into the open wall outlet. For more information visit www.insinkerator.com/chiller
- A standard, earth (grounded) electrical outlet is required under the sink for the Chiller's electrical power.
- The wall outlet powering the Chiller must be fused and should have continuous power.
- It is recommended that a dedicated control valve be installed on the cold water line supplying water to this system.
- If you suspect elevated levels of chlorine in your water, it is recommended to use our water filtration system.
- The water pressure to the Chiller should be between a minimum of 1 bar and a maximum of 3 bar.
- The temperature on the Chiller is controlled by the thermostat on the reverse of the unit. Adjustable from 3°C - 10°C.
- The Chiller should only be installed in an upright position.
- The Chiller is intended only for chilling water.
- A drain pan, plumbed to an appropriate drain, or outfitted with a leak detector, should be used in those applications where any leakage would cause property damage.
- Do not install if water pressure exceeds 860 kPa (8.6 bar , 125 psi). If your water pressure exceeds 550 kPa (5.5 bar , 80 psi), you must install a pressure limiting valve. In Australia and New Zealand, a watermark certified AS/NZS2845.1 350 kPa (3.5 bar , 50 psi) set pressure limiting valve and dual check valve must be used.
- Protect from freezing, shut off water supply and drain the entire system when temperatures are expected to drop below 4C.
- Ambient temperature should be between 4C and 30C. At elevated ambient temperatures the appliance will take longer to chill the water.



BEFORE USING THE APPLIANCE

Failure to comply with any of these safety regulations could cause fires, electric shocks or damage the machine

PLACE OF INSTALLATION

- This appliance is designed for household and similar uses.
- Do not place the machine near inflammable solvents such as alcohol or diluents.
- Do not install the machine in excessively damp and dusty places, exposed to direct sunlight, outdoors or near to heat sources. Machine installation in these places could cause fires or electric shocks.
- The appliance is not suitable for use in open places.
- During connection of the appliance to the mains water supply, all pre-existing tubes, gaskets and joints placed between the appliance and the water mains connection must be replaced with new material to avoid contamination.

ELECTRIC POWER SUPPLY

- Do not connect or disconnect the machine from the socket with wet hands.
- Insert the plug into the wall socket firmly.
- Do not damage, modify, stretch, bend or twist the power cable.
- Do not place heavy objects on the power cable.
- Do not connect the machine to a socket to which other equipment is connected (extensions, 2 or 3 plug adaptors, etc.).
- Do not use the machine if the power cable is tied or knotted.
- If smoke, unusual smells or strange noises are found coming from the machine, disconnect it immediately from the socket and contact the local retailer or technical service assistance. Use of the machine in these conditions could cause fires or electric shocks.
- Periodically disconnect the machine from the socket and clean the plug and socket with a dry cloth. If the machine is connected in a place exposed to dust, smoke or high humidity, the dust accumulated on the plug will absorb humidity and this could alter the insulation and trigger a fire.
- Do not spray water on the device. This could cause electric shocks or fires.
- The appliance must not be installed where water jets can be generated.
- Use a damp cloth to clean the machine. Do not use alcohol, benzene or diluents.
- Before cleaning the machine, switch it off and disconnect it from the socket. Not being switched off or accidental switching on during cleaning could cause injuries to persons or damages to the machine.
- The device can be used by children under the age of 8 and by people with reduced physical, sensory or mental capabilities, or lack of experience or knowledge, provided under supervision or after the same have been instructed on the use to ensure safety and understanding of the dangers inherent in it. Children should not play with the appliance. Cleaning and maintenance meant to be performed by the user must not be performed by unsupervised children.



WHAT YOU NEED TO GET STARTED

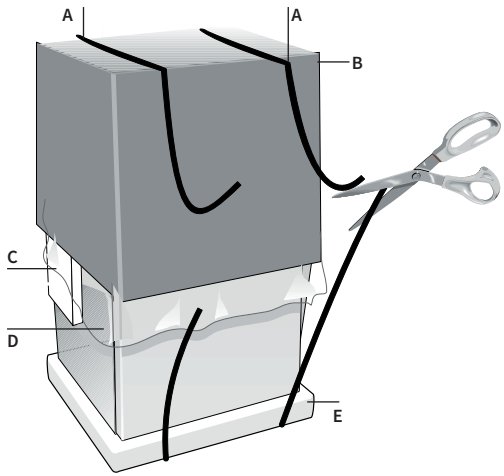
Equipment Required:

- Cold or hot/cool water dispenser
- T-fitting
- Dedicated control valve
- Adjustable wrench
- Utility knife
- Tape measure / ruler

Equipment You May Need:

- Hole saw / hole punch
- Basin wrench
- Tube cutter

 WARNING	A potentially hazardous situation, which, if not avoided, could result in death or serious injury.
 CAUTION	A potentially hazardous situation, which, if not avoided, could result in minor or moderate injury.
NOTICE	Notice is used to address practices not related to personal injury.



REMOVAL OF PACKAGING

- Place the appliance in its installation site.
- Cut straps A and remove carton B, polystyrene C and external plastic bag D.
- Do away with plastic bags D and polystyrene C immediately as they are a danger for children.
- Once the appliance is free from its packaging, remove the base E

PRODUCT

- This appliance is marked according to the European directive 2012/19/ EC on Waste Electrical and Electronic Equipment (WEEE). By ensuring this product is disposed of correctly, you will help prevent potential negative consequences for the environment and human health, which could otherwise be caused by inappropriate waste handling of this product.



The symbol on the product, or on the documents accompanying the product, indicates that this appliance may not be treated as household waste. Instead it shall be handed over to the applicable collection point for the recycling of electrical and electronic equipment.

- Disposal must be carried out in accordance with local environmental regulations for waste disposal. For more detailed information about treatment, recovery and recycling of this product, please contact your local city office or the shop where you purchased this product.

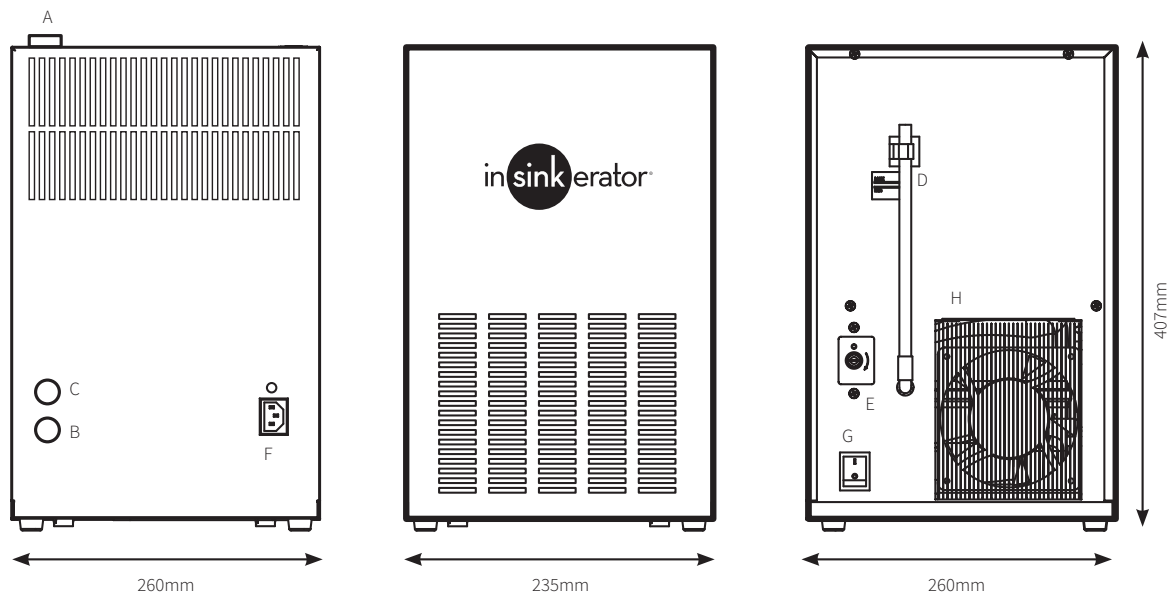
ADVICE ON HOW TO PROTECT THE ENVIRONMENT

Packaging

- Packaging material is 100% recyclable.
- For its disposal follow your local regulations.
- The packaging material (plastic bags, polystyrene parts etc..) must be kept out of children's reach as it could be dangerous.

Information

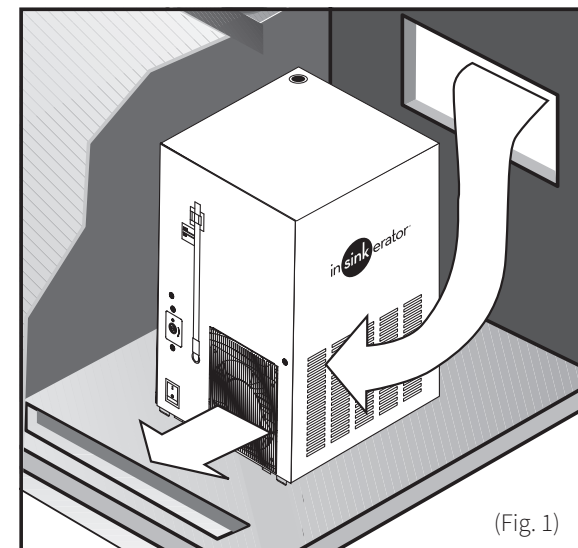
- This appliance does not contain CFCs (the cooling circuit contains a gas that is not harmful to the ozone layer).
- For further details, please refer to the serial data plate on the appliance.



Chiller unit overview

ENGLISH

- A. Cold water outlet
- B. Cold water inlet
- C. Ice bank fill
- D. Level pipe of ice bank
- E. Thermostat
- F. IEC connector for power cord
- G. On/off switch
- H. Fan grilles



(Fig. 1)

POSITIONING THE APPLIANCE

Position the appliance in the point of installation, away from sources of heat and direct sunlight. We also advise against installing the appliance outdoors and in very damp rooms.

- Install the machine under the sink, keeping the vent completely clear. Do not put anything in the way that could prevent or restrict the circulation of air (Fig. 2).
- The appliance should be positioned in such a way as to leave approximately 15 cm of space free for air to circulate freely (Fig. 1). Special ventilation grills/slits must be prepared in the undercounter model's housing compartment to favour disposal of the heat produced by the refrigerating circuit.

WATER CONNECTION TO THE MAINS

Before making the water connection, make sure the mains water pressure is between 1 and 3 bars. If the mains pressure is below 1 bar or the flow rate is less than 2 l/min, fit a device capable of increasing the mains pressure (ex: booster pump or equivalent system).

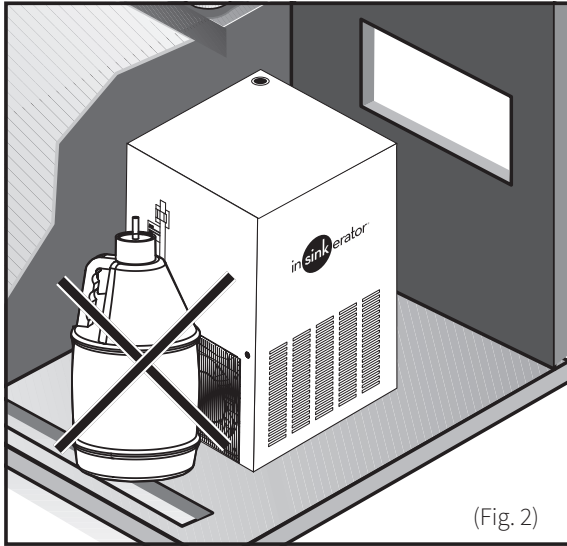
POSITIONNEMENT DE L'APPAREIL

Placez l'appareil à l'endroit où il doit être installé, à l'écart des sources de chaleur et de la lumière directe du soleil. Nous déconseillons également d'installer l'appareil en extérieur et dans des pièces très humides.

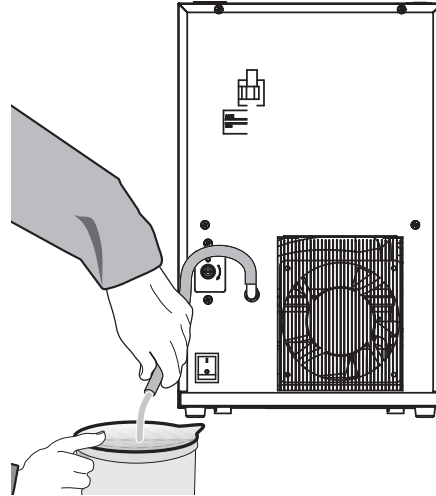
- Installez la machine sous l'évier, en laissant l'évent complètement dégagé. Aucun objet ne doit empêcher ou restreindre la circulation de l'air (Fig. 2).
- L'appareil doit être placé de manière à laisser un espace libre d'environ 15 cm pour permettre la libre circulation de l'air (Fig. 1). Des grilles/fentes d'aération spéciales doivent être aménagées dans le compartiment prévu à cet effet sur le modèle sous comptoir pour favoriser l'évacuation de la chaleur produite par le circuit réfrigérant.

RACCORDEMENT AU RÉSEAU D'EAU

Avant de procéder au raccordement de l'eau, assurez-vous que la pression de l'eau du réseau est comprise entre 1 et 3 bar. Si la pression de l'eau du réseau est inférieure à 1 bar ou si le débit est inférieur à 2 l/min, installez un dispositif qui augmente la pression du réseau (ex : pompe de surpression ou système équivalent).



(Fig. 2)

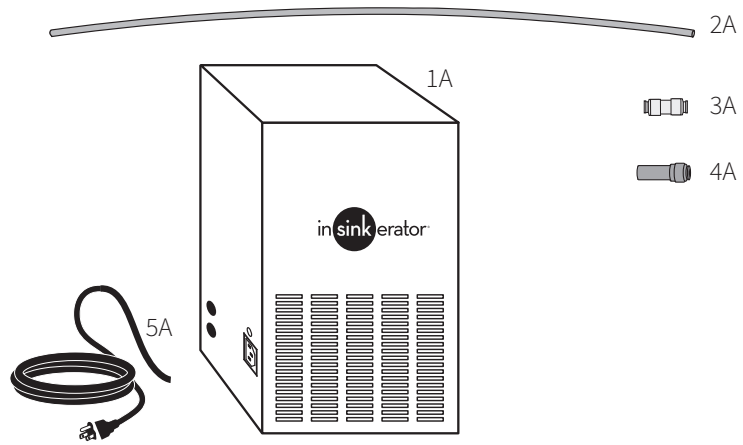


ICE CONTAINER EMPTYING (FOR MAINTENANCE)

Disconnect the power supply cable from the outlet. To empty the ice tank after the ice melted, you just have to take the vertical level and tank discharge tube P off its site and let the water flow. After the ice container has been emptied (almost 3 litres), replace the tube in its place.

During connection of the appliance to the mains water supply, all pre-existing tubes, gaskets and joints placed between the appliance and the water mains connection must be replaced with new material to avoid contamination.

Chiller unit parts list

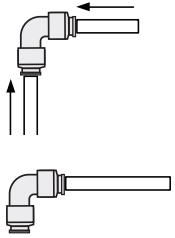


ENGLISH

- 1A. Neo Chiller
- 2A. 6.35mm (1/4") Blue Tube
- 3A. 6.35mm (1/4") union connection
- 4A. Adaptor (6.35mm to 8mm)
- 5A. Plug (pin arrangement varies dependant on world region)

IMPORTANT
For peace of mind register your product at
insinkerator.co.uk/register

Quick connections



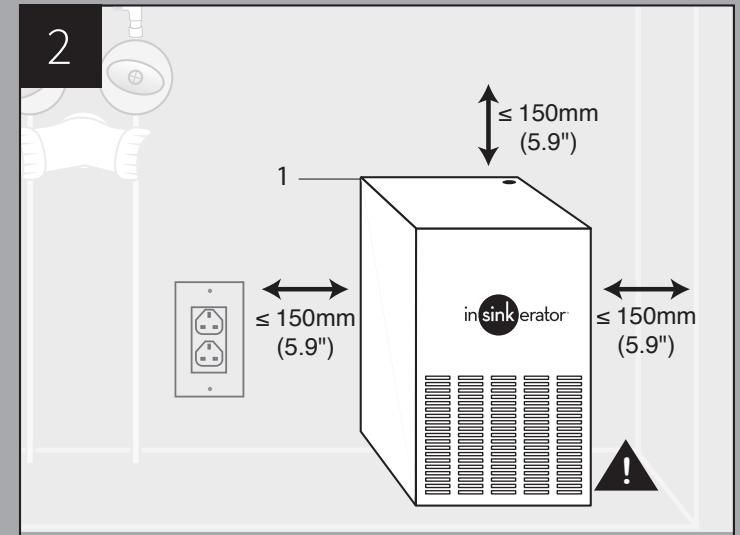
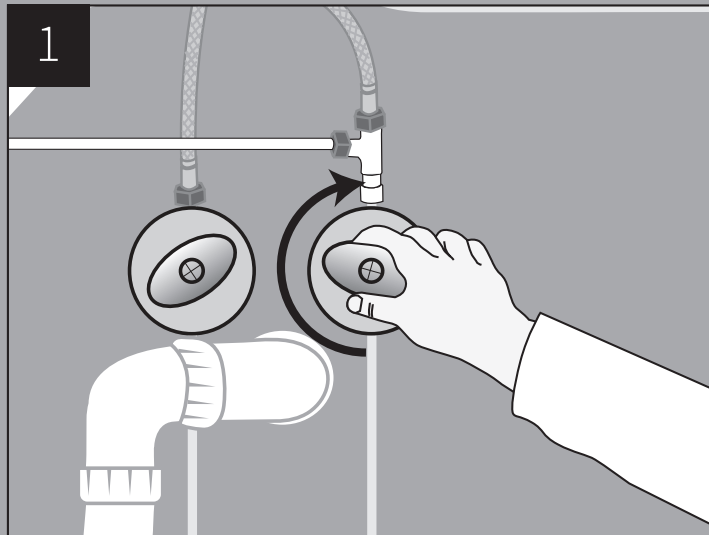
Ensure that the tubes are straight near the quick connections.

Avoid side loading the quick connection.

Ensure that the tube is pushed all the way into the quick connection.

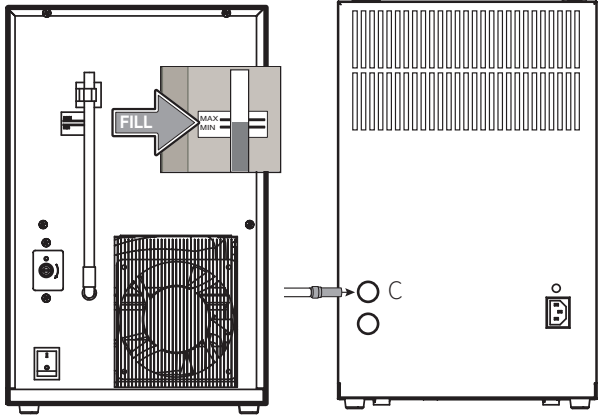
Regularly inspect all quick connections for leaks. Turn off the water supply immediately if a leak is detected or the connector appears damaged. Replace the quick connector before turning the water back on. If cleaning any of the connection or tubing, use only water.

Pre installation with All taps



CAUTION: Do not place objects on top of Chiller which could affect proper cooling. Non-compliance will cause the compressor to overheat then cease to function, and the warranty is considered immediately invalidated under these conditions.

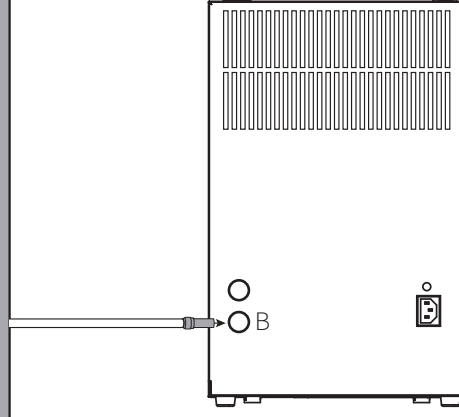
3



ICE CONTAINER FILLING

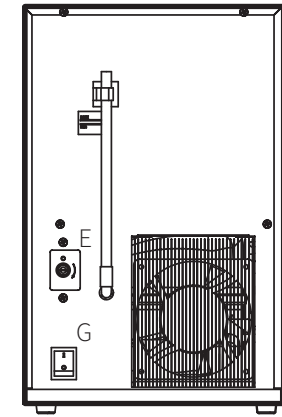
Remove plug from ICE BANK FILL port (C). Connect plastic tube to this port and the other end to the Y fitting (smaller side). Turn on water supply and fill ice bank use fill marking. When full remove plastic tube from the chiller and insert the plug.

4



CHANGE WATER MAINS CONNECTION FROM PORT C TO B

5



ADJUST WATER TEMPERATURE AND TURN ON POWER

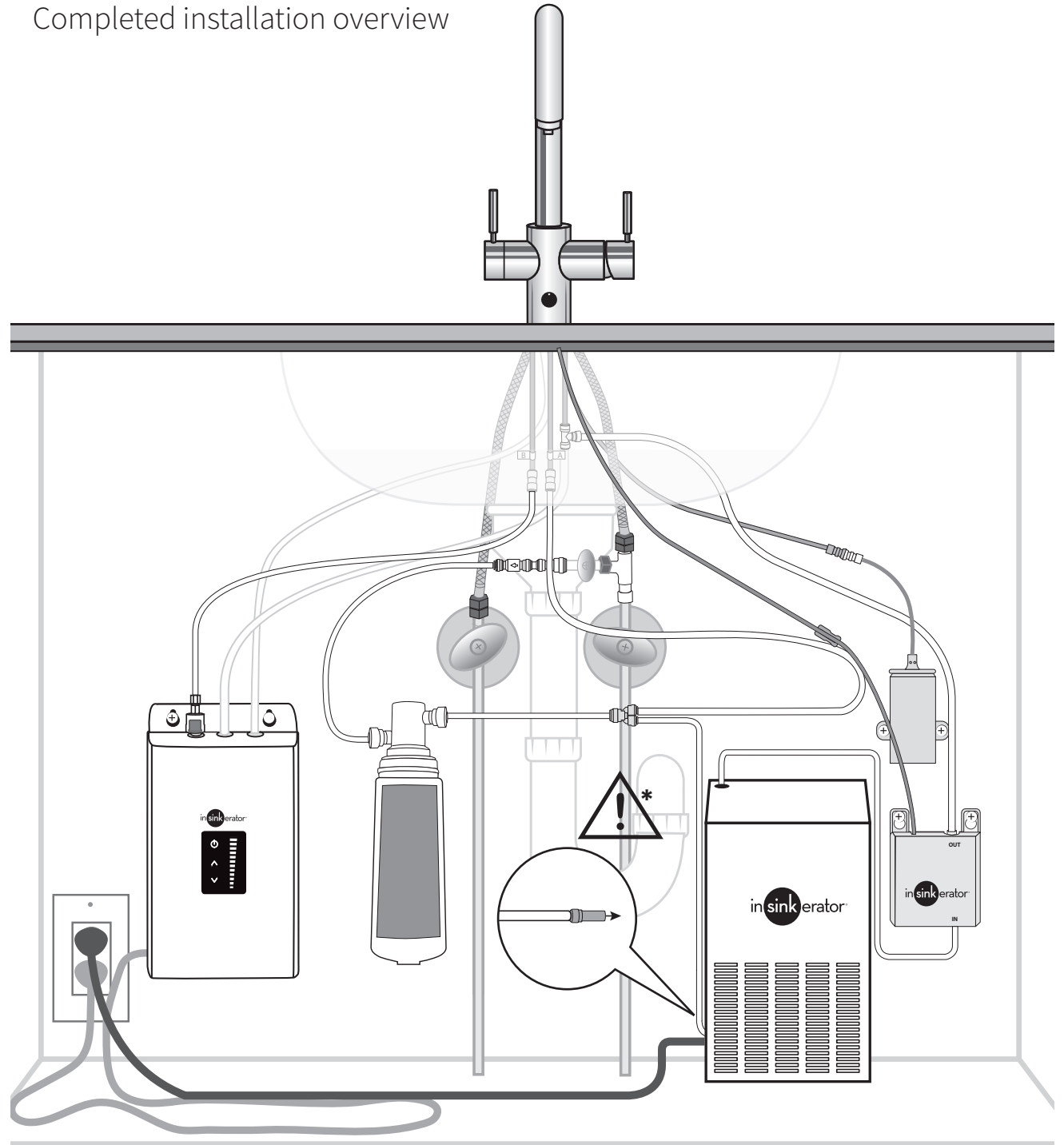
ADJUST THE TEMPERATURE (E) INSERT PLUG. TURN ON POWER (G)

Installation with F-4N1 Tap

NOTICE: Property Damage. Before plugging in Chiller, check for leaks in all water supply connections.

NOTICE: Property Damage. Do not use an extension cord set with the Chiller. (A standard grounded outlet within 760mm (30") of the Chiller is required under the sink.)

Completed installation overview

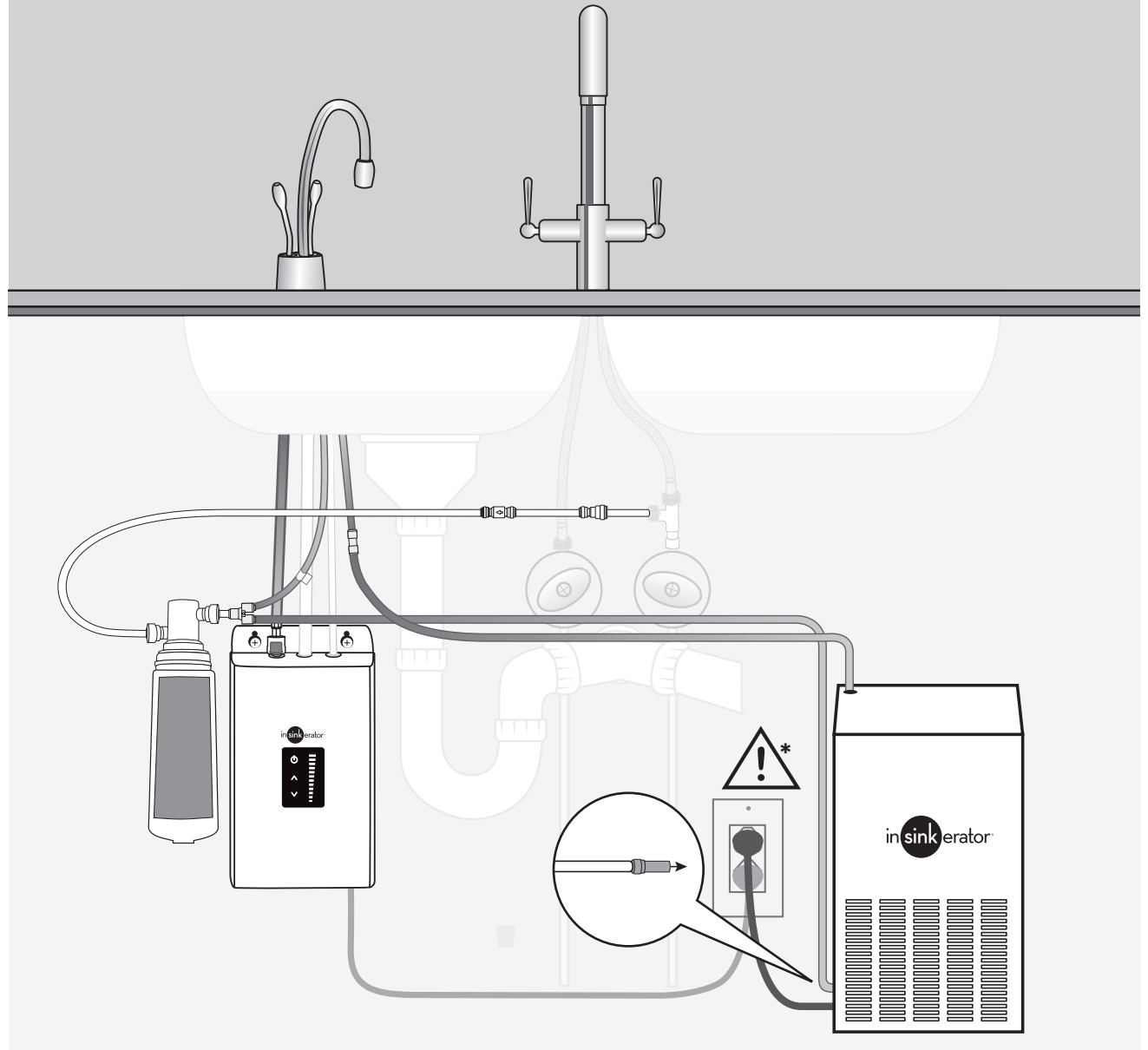


Installation with F-HC1100 Hot and Chilled Water Tap

NOTICE: Property Damage. Before plugging in Chiller, check for leaks in all water supply connections.

NOTICE: Property Damage. Do not use an extension cord set with the Chiller. (A standard grounded outlet within 760mm (30") of the Chiller is required under the sink.)

Completed installation overview

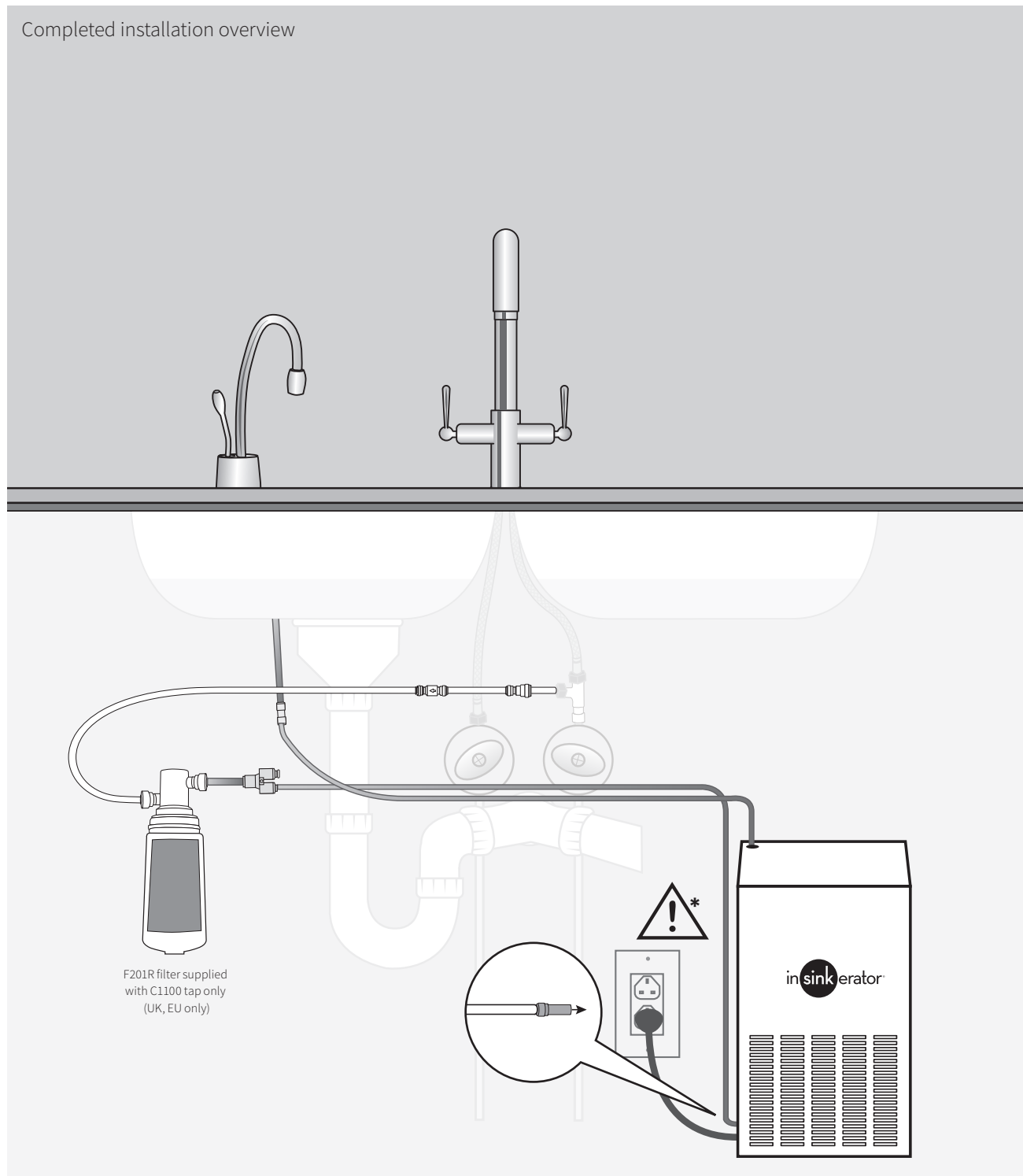


Installation with F-C1100 Chilled Water Tap (UK, EU ONLY)

NOTICE: Property Damage. Before plugging in Chiller, check for leaks in all water supply connections.

NOTICE: Property Damage. Do not use an extension cord set with the Chiller. (A standard grounded outlet within 760mm (30") of the Chiller is required under the sink.)

Completed installation overview

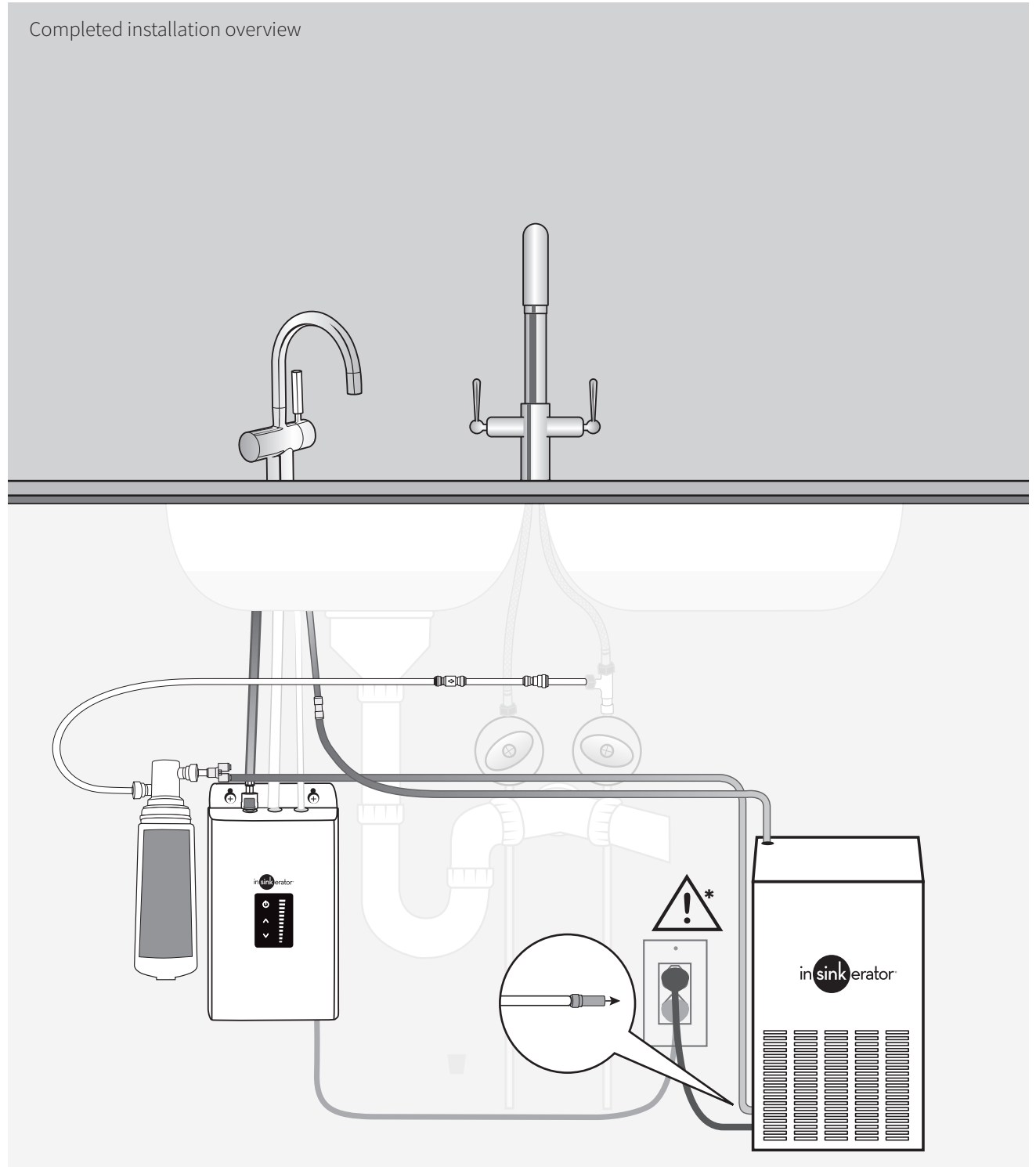


Installation with F-HC3300 Hot and Chilled Water Tap

NOTICE: Property Damage. Before plugging in Chiller, check for leaks in all water supply connections.

NOTICE: Property Damage. Do not use an extension cord set with the Chiller. (A standard grounded outlet within 760mm (30") of the Chiller is required under the sink.)

Completed installation overview



IN-HOME LIMITED WARRANTY

NeoChiller	2-YEAR WARRANTY
F-4N1	5-YEAR WARRANTY
F-HC1100	2-YEAR WARRANTY
F-C1100	2-YEAR WARRANTY
F-HC3300	2-YEAR WARRANTY
Filtration system (excluding replaceable filtration cartridge)	1-YEAR WARRANTY

This limited warranty is provided by InSinkErator, a business unit of Emerson Electric Co., ("InSinkErator" or "Manufacturer" or "we" or "our" or "us") to the original consumer owner of the InSinkErator product with which this limited warranty is provided (the "InSinkErator Product"), and any subsequent owner of the residence in which the InSinkErator Product was originally installed ("Customer" or "you" or "your").

InSinkErator warrants to Customer that your InSinkErator Product will be free from defects in materials and workmanship, subject to the exclusions described below, for the "Warranty Period", commencing on the later of: (a) the date your InSinkErator Product is originally installed, (b) the date of purchase, or (c) the date of manufacture as identified by your InSinkErator Product serial number. You will be required to show written documentation supporting (a) or (b). If you are unable to provide documentation supporting either (a) or (b), the Warranty Period commencement date will be determined by Manufacturer, in its sole and absolute discretion, based upon your InSinkErator Product serial number.

Permitted Uses

You may use your InSinkErator Product hot/cold water tank and filter system in combination with any genuine InSinkErator Product instant hot water dispensers and component parts and/or Authorized OEM Products. "Authorized OEM Products" mean those hot or hot/cold water dispensers and component parts that have been manufactured by an authorized InSinkErator original equipment manufacturer ("Authorized OEM") and which have documentation expressly stating that such Authorized OEM Products are compatible with the InSinkErator Product(s). Authorized OEMs may change from time to time. A list of Authorized OEMs is available to you upon request or at: www.insinkerator.com/oem. Use of your InSinkErator Product in combination with any products other than Authorized OEM Products will void this warranty.

What is Covered

This limited warranty covers defects in materials or workmanship, subject to the exclusions below, in InSinkErator Products used by a consumer Customer for residential use only, and includes all replacement parts and labor costs. **YOUR SOLE AND EXCLUSIVE REMEDY UNDER THIS LIMITED WARRANTY SHALL BE LIMITED TO REPAIR OR REPLACEMENT OF THE INSINKERATOR PRODUCT, PROVIDED THAT IF WE DETERMINE IN OUR SOLE DISCRETION THAT NEITHER REMEDY IS PRACTICABLE, WE MAY PROVIDE YOU A REFUND OF YOUR PURCHASE PRICE OR A CREDIT TOWARDS ANOTHER INSINKERATOR PRODUCT.**

What is not Covered

This limited warranty does not extend to and expressly excludes:

- Losses or damages or the inability to operate your InSinkErator Product resulting from conditions beyond the Manufacturer's control including, without limitation, accident, alteration, misuse, abuse, neglect, negligence (other than Manufacturer's), failure to install, maintain, assemble, or mount the InSinkErator Product in accordance with Manufacturer's instructions or local electrical and plumbing codes.
- Wear and tear expected to occur during the normal course of use, including without limitation, cosmetic rust, scratches, dents or comparable and reasonably expected losses or damages.
- Losses or damages caused by any product or component part used with the InSinkErator Products, including both Authorized OEM Products and other products and components.

In addition to the above exclusions, this warranty does not apply to InSinkErator Products installed in a commercial or industrial application.

No Other Express Warranty Applies

This limited warranty is the sole and exclusive warranty provided to the Customer identified above. No other express warranty, written or verbal, applies. No employee, agent, dealer, or other person is authorized to alter this limited warranty or make any other warranty on behalf of Manufacturer. The terms of this limited warranty shall not be modified by the Manufacturer, the original owner, or their respective successors or assigns.

What we will do to Correct Problems

If your InSinkErator Product does not operate in accordance with the documentation provided to you, or you have questions concerning your InSinkErator Product or how to determine when service is needed, please contact the Authorised InSinkErator service centre for your area as identified on the backcover of this manual.

The following information must be provided as part of your warranty claim: your name, address, phone number, your InSinkErator Product model and serial number, and if necessary, upon request, written confirmation of either: (a) the date shown on your installation receipt, or (b) the date shown on your purchase receipt.

Manufacturer or its authorized service representative will determine, in its sole and absolute discretion, if your InSinkErator Product is covered under this warranty. You will be given the contact information for your closest authorized InSinkErator Service Center. Please contact your InSinkErator Service Center directly to receive in home warranty repair or replacement service. Only an authorized InSinkErator service representative may provide warranty service. InSinkErator is not responsible for warranty claims arising from work performed on your InSinkErator Product by anyone other than an authorized InSinkErator service representative.

If a covered claim is made during the Warranty Period, Manufacturer will, through its authorized service representative, either repair or replace your InSinkErator Product. Cost of replacement parts or a new InSinkErator Product, and cost of labor for repair or installation of the replacement InSinkErator Product are provided at no cost to you. Repair or replacement shall be determined by Manufacturer or its authorized service representative in their sole discretion. All repair and replacement services will be provided to you at your home. If Manufacturer determines that your InSinkErator Product must be replaced rather than repaired, the warranty on the replacement InSinkErator Product will be limited to the unexpired term remaining in the original Warranty Period.

This water chilling system / NeoChiller is covered by Manufacturer's limited warranty. This limited warranty is void if you attempt to repair the InSinkErator Product. For service information, please contact the Authorised InSinkErator service centre for your area as identified on the backcover of this manual.

Limitation of Liability

TO THE EXTENT PERMITTED BY LAW, IN NO EVENT SHALL MANUFACTURER OR ITS AUTHORIZED SERVICE REPRESENTATIVES BE LIABLE FOR ANY INCIDENTAL, SPECIAL, INDIRECT, OR CONSEQUENTIAL DAMAGES, INCLUDING ANY ECONOMIC LOSS, WHETHER RESULTING FROM NONPERFORMANCE, USE, MISUSE OR INABILITY TO USE THE INSINKERATOR PRODUCT OR THE MANUFACTURER'S OR ITS AUTHORIZED SERVICE REPRESENTATIVE'S NEGLIGENCE. MANUFACTURER SHALL NOT BE LIABLE FOR DAMAGES CAUSED BY DELAY IN PERFORMANCE AND IN NO EVENT, REGARDLESS OF THE FORM OF THE CLAIM OR CAUSE OF ACTION (WHETHER BASED IN CONTRACT, INFRINGEMENT, NEGLIGENCE, STRICT LIABILITY, OTHER TORT OR OTHERWISE), SHALL MANUFACTURER'S LIABILITY TO YOU EXCEED THE PRICE PAID BY THE ORIGINAL OWNER FOR THE INSINKERATOR PRODUCT.

The term "consequential damages" shall include, but not be limited to, loss of anticipated profits, business interruption, loss of use or revenue, cost of capital or loss or damage to property or equipment.

Some states do not allow the exclusion or limitation of incidental or consequential damages, so the above limitation may not apply to you.

This limited warranty gives you specific legal rights and you may also have other rights which vary from state to state.

ROUTINE MAINTENANCE

SUBJECT	HOW	HOW OFTEN
Cleaning the outside of the appliance	<ul style="list-style-type: none"> Clean the external part with a damp cloth, do not use solvents or abrasive detergents. 	Monthly
Cleaning the cooling condenser (H on page 8)	<ul style="list-style-type: none"> Remove all dust and dirt with a domestic vacuum cleaner or similar appliance. Do not use compressed air jets. Do not use wire brushes. 	Monthly
Water replacement in the ice bank tank	<ul style="list-style-type: none"> Switch the apparatus off and wait about 1 hour for it to defrost. Empty the water using the level and basin unloading tube D Restore the water level in the ice bank tank as described in page 9. 	If the machine has been turned off for a long time
Power lead	<ul style="list-style-type: none"> Check the condition and intactness of the power lead. 	
Water connection check	<ul style="list-style-type: none"> Check the condition and intactness of the water supply pipe. Check for any leak. 	

FILTER GUIDE AND REPLACEMENT

Replace filter cartridge when there is an obvious decrease in water flow to the tap or if there is an objectionable taste or odour to the water.

- When the inlet and outlet ports have been closed and the filter's internal pressure has been relieved, water (about 60ml) will discharge from vent line.
- It is recommended that carbon filters be replaced every 6 months.
- If the new filter cartridge cannot be inserted, insert the old one and turn until it stops, remove it and then retry the new cartridge.

Filter replacement instructions:

- Replace with an InSinkErator® filter.
- Place pan or dish towel under the filter to catch water drainage during change.
- Slowly turn the cartridge anticlockwise completely until it stops (1/4 turn).
- Pull cartridge straight down and discard.
- Insert new cartridge into filter head.
- Top surface of cartridge will become flush with the bottom of the filter head when fully engaged.
- Turn the cartridge clockwise until it stops (1/4 turn).
- Align the in/out arrow on the head and bracket assembly to the in/out arrow on the cartridge.
- Open tap to expel trapped air.
- Run water for 4 minutes before usage.

CARE AND USE



WARNING: Electric Shock Hazard. To prevent electrical shock, disconnect power before servicing unit. Use only a properly grounded and polarized electric outlet.

PROPERTY DAMAGE

- Regularly inspect the unit for any signs of leakage. If there are signs of water damage, immediately remove the unit from service.
- A drain pan, plumbed to an appropriate drain or outfitted with a leak detector, should be used in those applications where any leakage could cause property damage.

CLEANING THE TAP

- Only use mild cleaners to clean the tap and plastic components.
- Cleaners with acids, abrasives, alkaline or organic solvents will result in deterioration of the plastic components and void the warranty.

PERSONAL INJURY

- Regularly check for signs of corrosion by examining the appearance of the dispensed water.
- If the water discoloration remains after purging unit, discontinue use and contact an authorized InSinkErator service agent.

Faults and remedies

WARNING! The operations should be carried out by a qualified professional.

Many of these problems are not caused by the cooler but could occur due to the electricity supply or by incorrect useage of the cooler.

PROBLEM	POSSIBLE CAUSE	WHAT TO DO
Water is not cold	<ul style="list-style-type: none"> •No power to unit. •The unit is unplugged. •The electrical outlet is inoperative. •Power Switch is in the Off position. •Thermostat is in the off position. •The unit has not had enough time to chill the water. 	<ul style="list-style-type: none"> •Make sure the circuit breaker or fuses are functioning properly. •Make sure the unit is connected to a properly grounded electrical outlet and that the cord is connected to the chiller •Check that the outlet is not switched off. •Turn on power switch on the front. •Rotate the thermostat away from Off. •Wait 30 minutes and check water temperature.
The appliance is operating excessively or non-stop, but the water is not cold.	<ul style="list-style-type: none"> •Ice bank is not filled with water. •Water pressure above 3 bar. •The appliance has a damaged or defective cooling system. 	<ul style="list-style-type: none"> •Fill the ice bank per instructions. •For best results lower the water pressure to 3 bars. •Unplug the appliance. Contact Service
The water is cold, but the appliance is operating excessively or non-stop.	<ul style="list-style-type: none"> •Improper ventilation inside the cabinet. •Condenser (back side of appliance) is dirty or covered. •Air inlet (sides) blocking air inlet. •Thermostat is on maximum cold position. •Cabinet temperature is higher than 32C (90F). 	<ul style="list-style-type: none"> •Move appliance to allow proper air flow to and from the appliance, improve ventilation inside cabinet. •Clean the condenser or remove obstruction. •Reposition the appliance, remove obstructions. •Adjust the thermostat. •Improve the ventilation to lower the cabinet temperature. It is normal for the appliance to operate continuously at high cabinet temperatures.
Too much noise coming from the appliance, but it is working normally	<ul style="list-style-type: none"> •The appliance is not level. •Appliance, tubes, electrical cord are in contact with some other item. •Damaged or loose component inside the appliance. 	<ul style="list-style-type: none"> •Level the appliance or relocate. •Repositions the components. •Unplug the appliance. Call Service
Cold water comes out slowly or not at all.	<ul style="list-style-type: none"> •Low inlet water pressure •Clogged water filter •Thermostat setting to low. •Kinked tubing. •End piece of tap is plugged. •Damaged plumbing. 	<ul style="list-style-type: none"> •Adjust water supply valve. Take steps to increase water pressure. •Replace the filter cartridge. •Adjust the temperature setting. Allow the ice to melt. •Check all tubes to insure proper water flow. •Remove end piece. Clean or replace. •Inspect for water leaks.
Continuous drips of water.	<ul style="list-style-type: none"> •Debris in the water line may be in the tap valve seat causing a slow water leak. 	<ul style="list-style-type: none"> •Remove and inspect the end piece for debris. •With end piece removed, activate the tap lever 7-10 times to flush tap and lines.
Divided stream	<ul style="list-style-type: none"> •Debris in the end piece 	<ul style="list-style-type: none"> •Remove end piece. Clean or replace.

Check out our full range of Kitchen Products

Kitchen Sinks

Stainless Steel Kitchen Sinks

Granite Composite Kitchen Sinks

Glass Kitchen Sinks

Ceramic Kitchen Sinks

Franke Kitchen Sinks

Kitchen Taps

Contemporary Kitchen Taps

Traditional Kitchen Taps

Franke Kitchen Taps

Pull out Rinser Kitchen Taps

Instant Boiling Water Taps

Insinkerator Waste Disposal Units

plumbworld
Big brands, small prices.