

in sink erator®

in sink erator®

InSinkErator
Suite 6, Building 6
Hatters Lane, Croxley Green Business Park
Watford WD18 8YH
United Kingdom
Sales Tel: (0) 1923 297 880
Service Tel: (0) 800 389 3715
www.insinkerator.co.uk

ISE
44843 REV C


EMERSON
Commercial & Residential Solutions

The Emerson logo is a trademark and a service mark of Emerson Electric Co.
InSinkErator may make improvements and/or changes in the specifications at any time, in its sole discretion,
without notice or obligation, and further reserves the right to change or discontinue models.
©2014 InSinkErator, a business unit of Emerson Electric Co. All Rights Reserved.

3N1 ALL-IN-ONE TAP
Installation,
Care & Use





EMERSON
Commercial & Residential Solutions

ENGLISH

IMPORTANT SAFETY INFORMATION

- Please refer to the Installation, Care & Use manual packaged with your hot water tank for additional Important Safety Information.

WHAT YOU SHOULD KNOW BEFORE YOU BEGIN

 For your satisfaction and safety, read all instructions, cautions and warnings before installing or using this tap.

- This particular unit is not intended for commercial use.
- Make sure that all electrical wiring and connections conform to local codes.
- A standard, earthed (grounded) electrical outlet is required under the sink for the tap's electrical power.
- The wall outlet powering your tap must have power supplied to it continuously.
- This outlet must be fused and should not be controlled by the same wall switch that operates the disposer, unless you have a SinkTop Switch™ from InSinkErator®.
- It is recommended that a dedicated control valve be installed on the cold water line supplying water to this system.
- If you suspect elevated levels of chlorine in your water, or your water has a rusty appearance before the installation of this unit, use of our water filtration system is recommended.
- This product contains stainless steel. The manufacturer cannot guarantee against rusty water because of the number of factors that are involved beyond the manufacturer's control. However, the sudden appearance of rusty water discharged from the hot water tap may indicate the need for service or replacement of this product.
- The use of a water filter should NOT result in the water pressure dropping below 30 psi (207kPa). If it does, this will prevent your unit from operating correctly.
- Moving parts inside the tank causing a rattling noise is normal.
- When mounting tank and filter, screws provided are for use in wood studs or cabinets only. Use wall anchors (not supplied) for installation into plasterboard.


WHAT YOU NEED TO GET STARTED


Equipment Required:

- Drill
- T-fitting
- Dedicated control valve
- Adjustable spanner
- Phillips screwdriver
- Pencil
- Tape measure
- Level

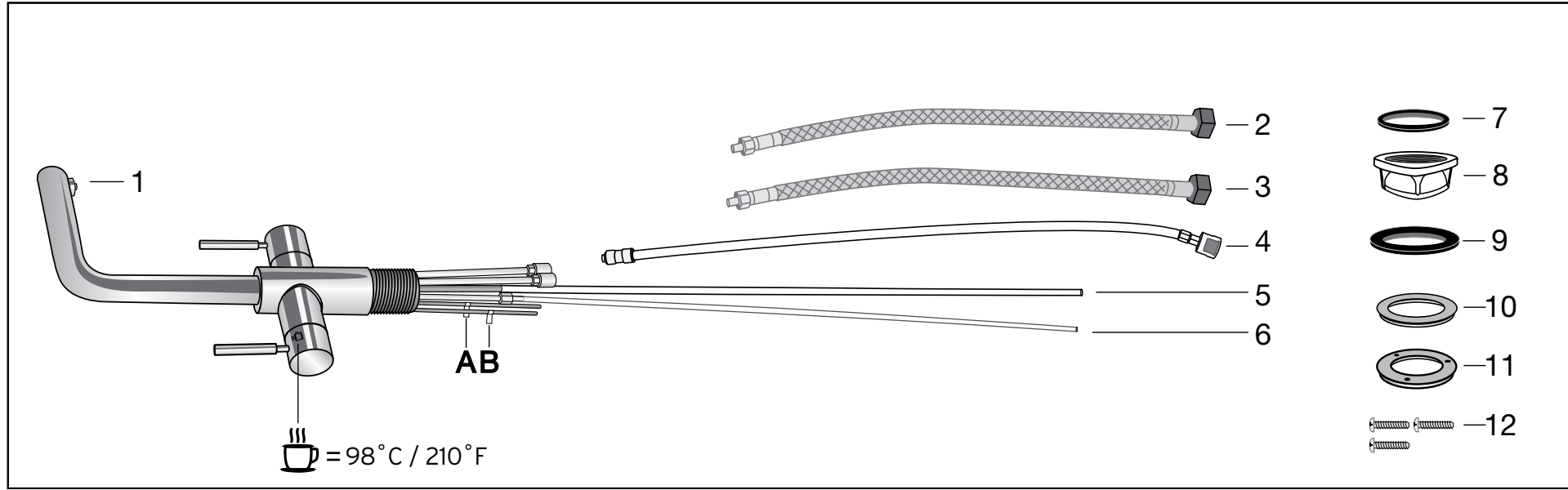
Equipment You May Need:

- Anchors for plasterboard
- Basin wrench
- Tubing cutter

 WARNING	A potentially hazardous situation, which, if not avoided, could result in death or serious injury.
---	--

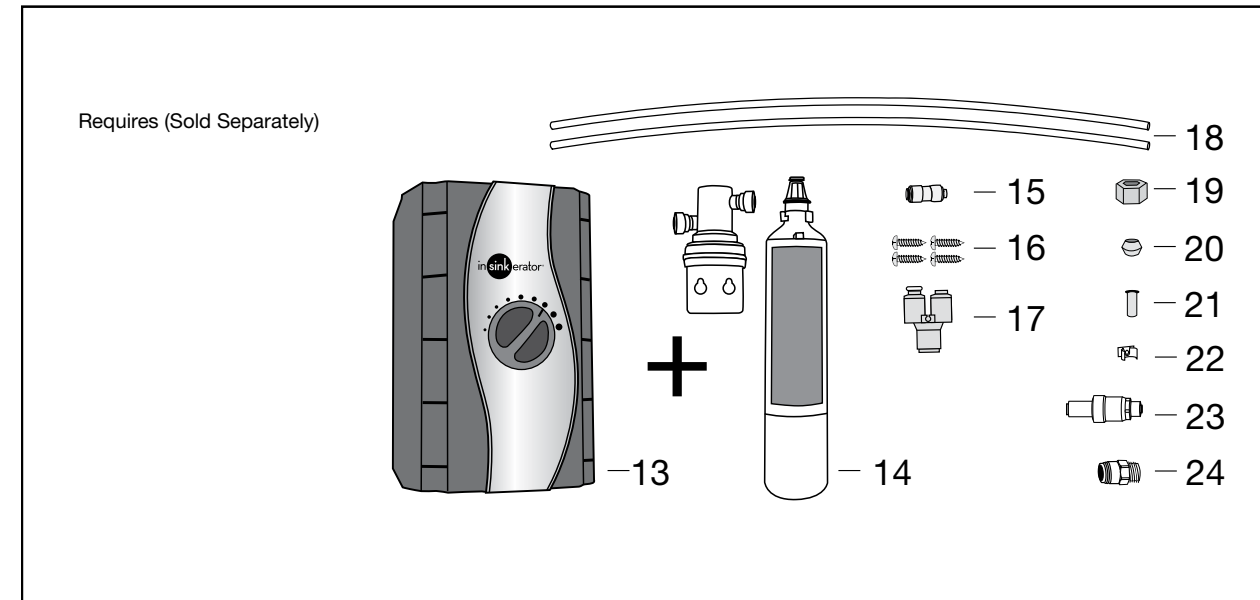
 CAUTION	A potentially hazardous situation, which, if not avoided, may result in minor or moderate injury.
---	---

NOTICE	Notice is used to address practices not related to personal injury.
---------------	---

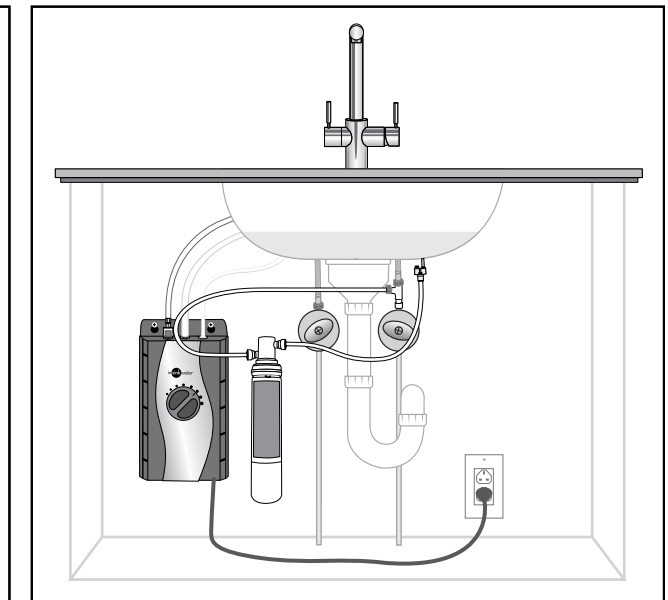


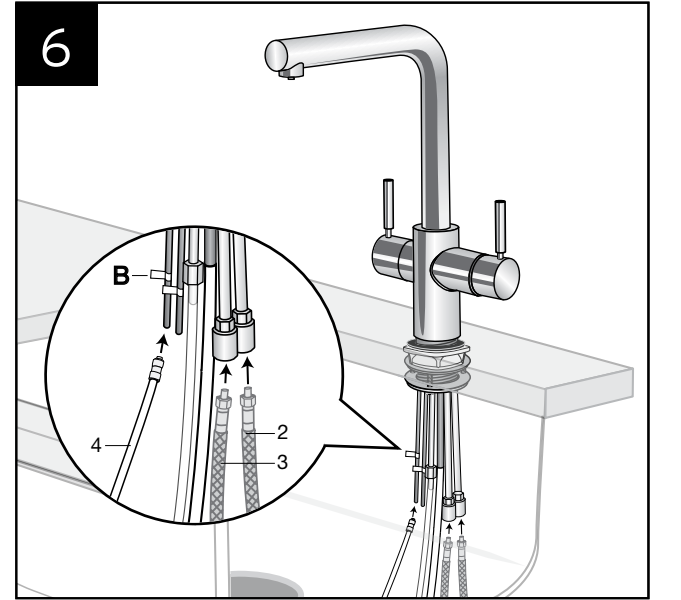
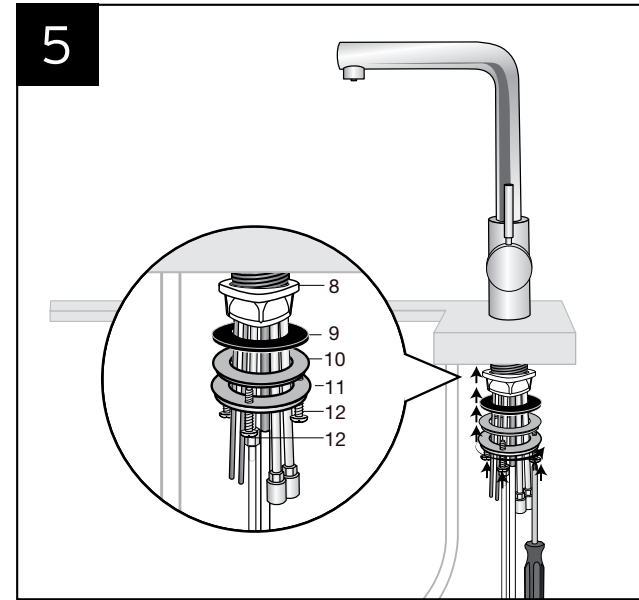
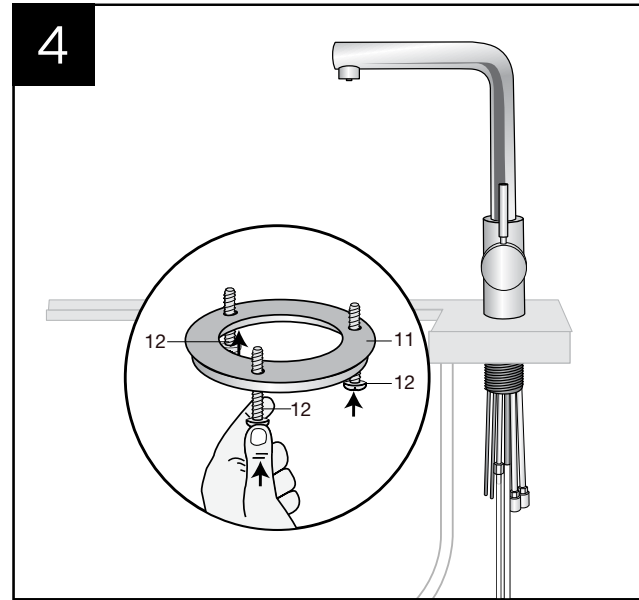
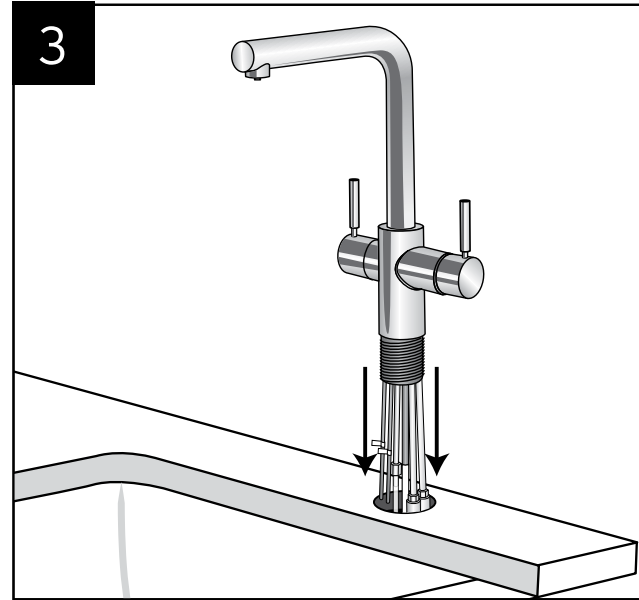
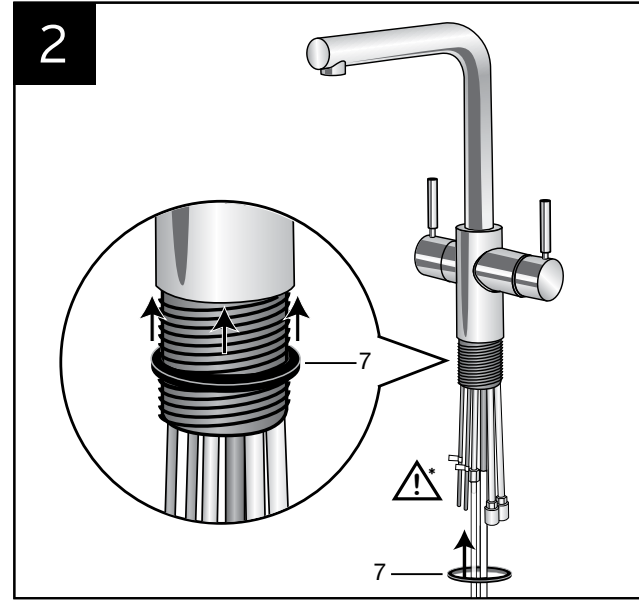
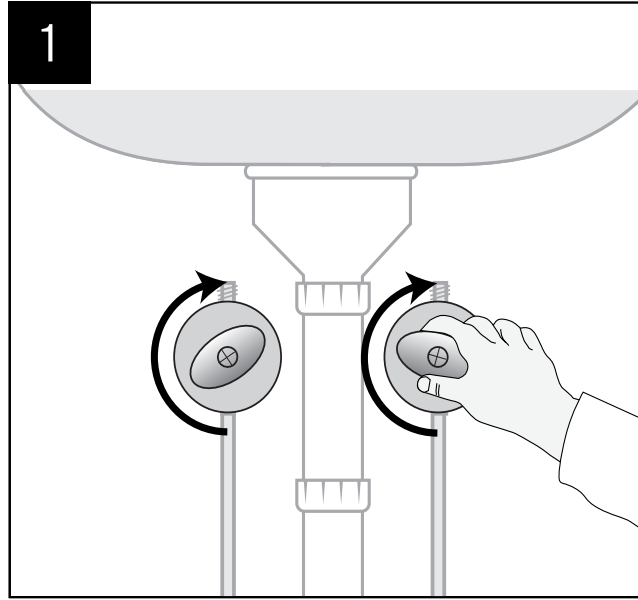
ENGLISH

- | | |
|-----------------------------------|--|
| 1. All-in-One Tap | 14. Filter Head and Cartridge
(not applicable for China) |
| 2. Main Tap Cold Water Inlet Tube | 15. Quick Connector |
| 3. Main Tap Hot Water Inlet Tube | 16. 19 mm (¾") Screws (4) |
| 4. White Aspirator Tube | 17. Y-Quick Connector |
| 5. White Hot Water Outlet Tube | 18. Filter Tubes (2) |
| 6. Clear Vent Tube | 19. Brass Nut |
| 7. Small Rubber O-Ring | 20. Ferrule |
| 8. Plastic Brace | 21. Brass Insert |
| 9. Large Rubber O-Ring | 22. Wall Mounting Clip |
| 10. Metal Ring | 23. Back Flow Protection Valve
(Australia/New Zealand only) |
| 11. Mounting Ring | 24. John Guest Fitting (Australia only) |
| 12. Mounting Screws (3) | |
| 13. Hot Water Tank | |



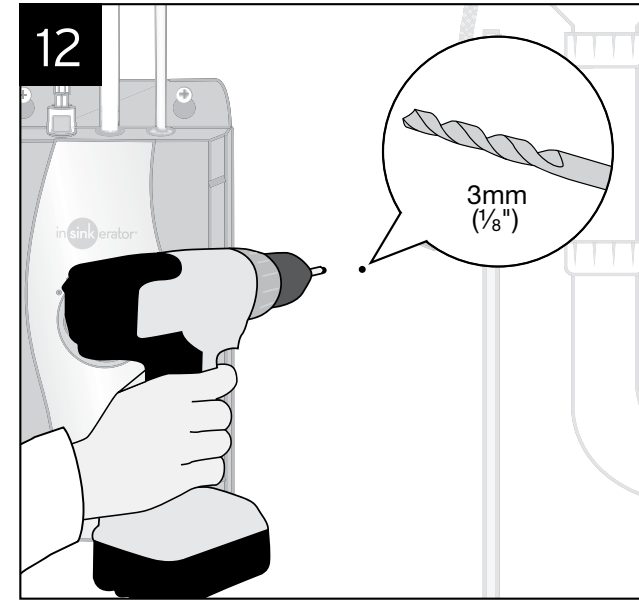
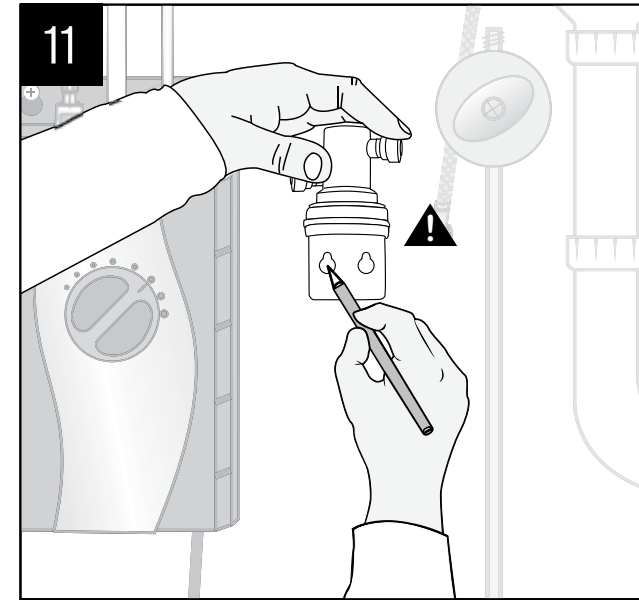
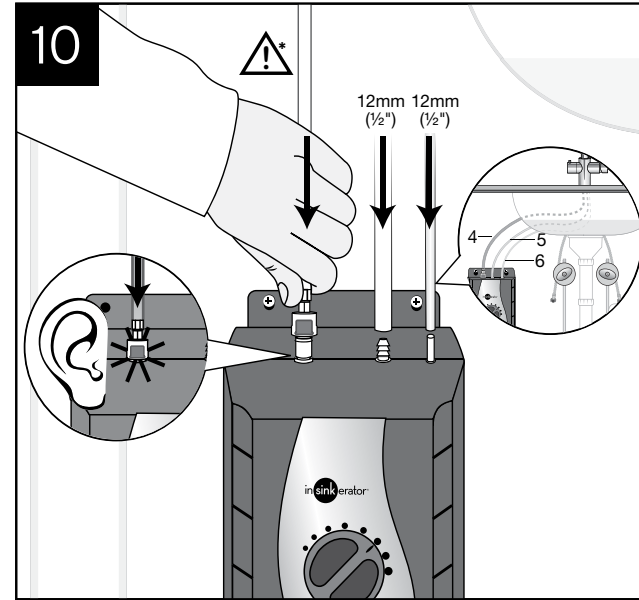
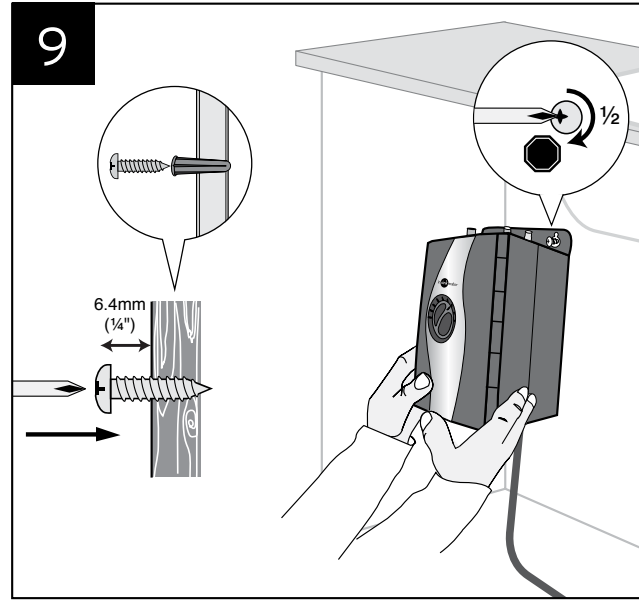
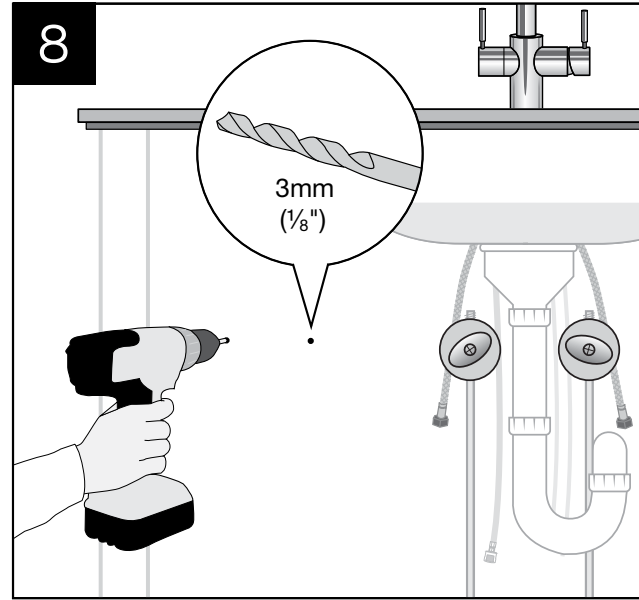
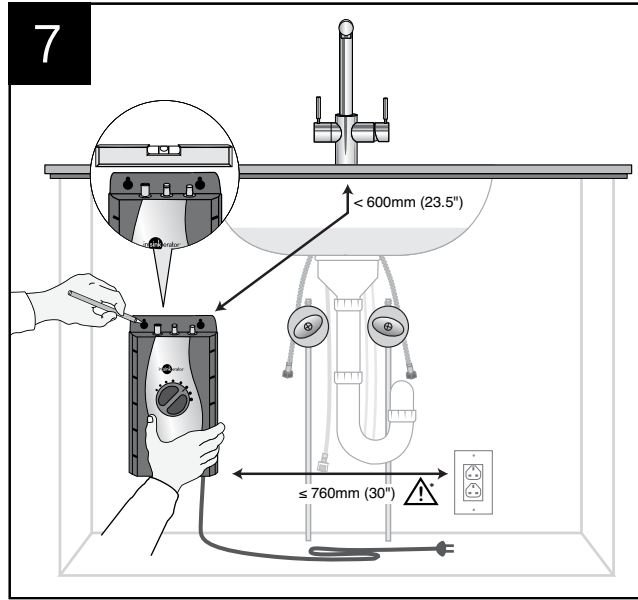
Requires (Sold Separately)





ENGLISH

* **NOTICE: Property Damage.** Do not pinch or break copper tubing. Do not distort the last 1 inch of tubing.



ENGLISH

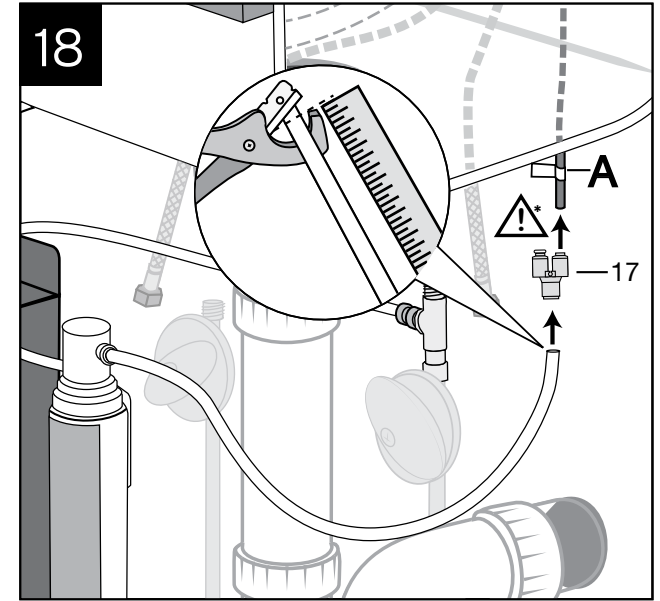
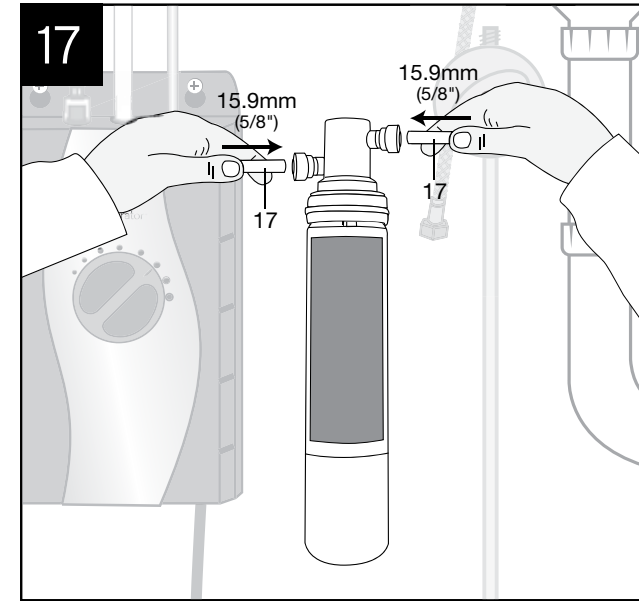
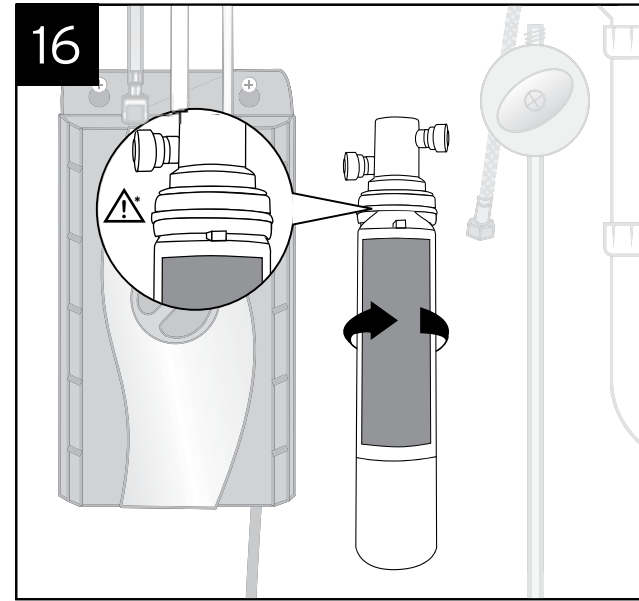
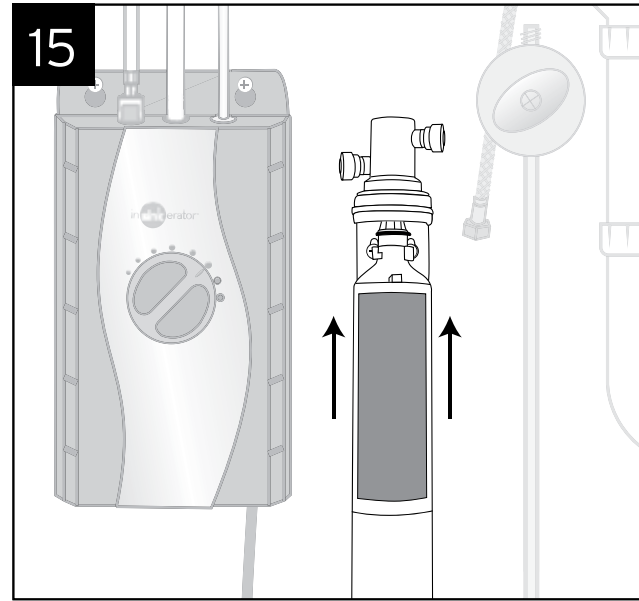
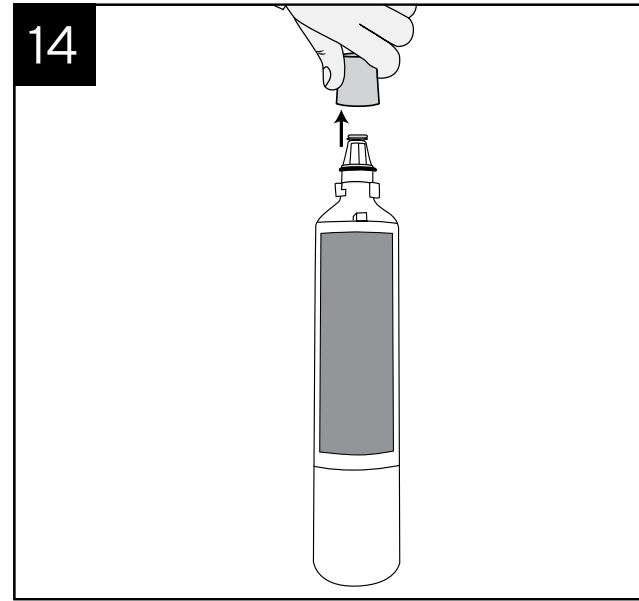
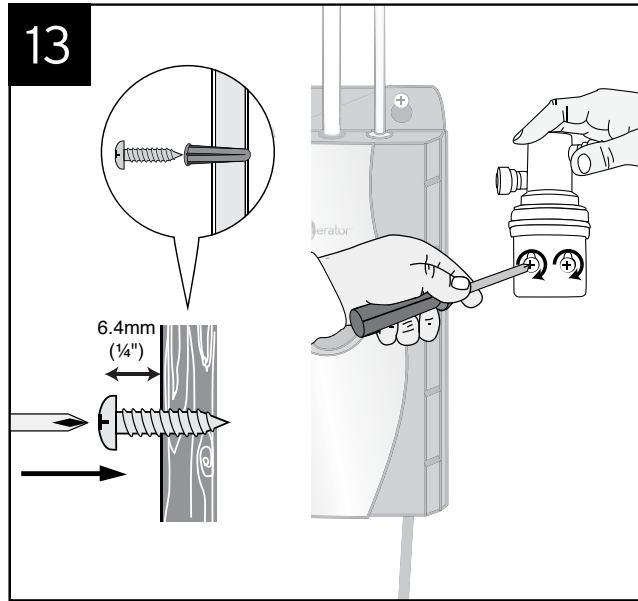
NOTICE: Property Damage. Do not plug in hot water tank. Tank must be located within 600 mm (23.5") of tap and within 760 mm (30") or less of a standard earth (grounded) outlet. DO NOT extend plumbing or electrical lines.

ENGLISH

WARNING. (Personal Injury) Do not locate filter above an outlet or other electrical device. Install head and bracket so that connections require no stretching, kinking or pinching of tubing.

* **NOTICE: Property Damage.** Pinched or blocked water lines may cause damage to the water tank. Check to make sure tubes are connected correctly and are pushed down as far as possible.

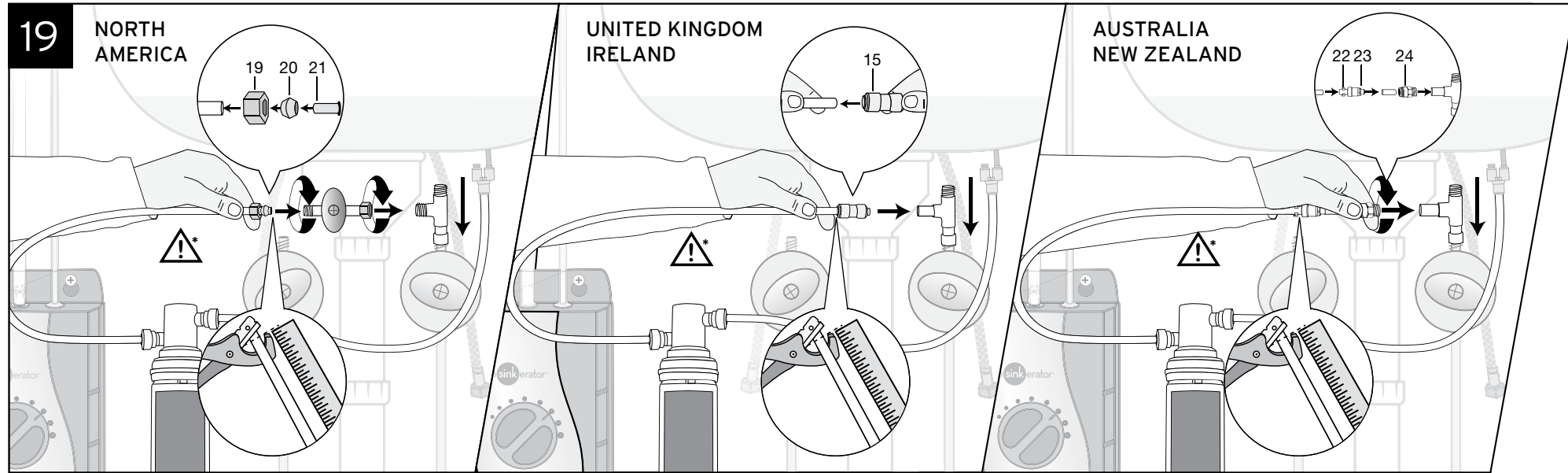
FOR INSTALLATION IN CHINA, AFTER STEP 10, SKIP TO STEP 19.



ENGLISH

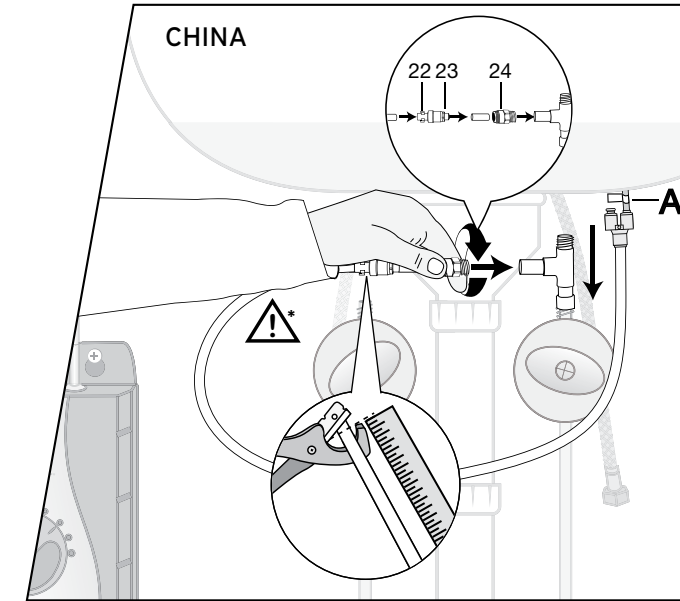
* **NOTICE: Property Damage.** Top surface of cartridge will be flush with bottom of filter head when fully engaged.

* **NOTICE: Property Damage.** Do not extend the lines farther than the 400 mm (16") provided. Ensure tube(s) and "Y" connector fit securely.



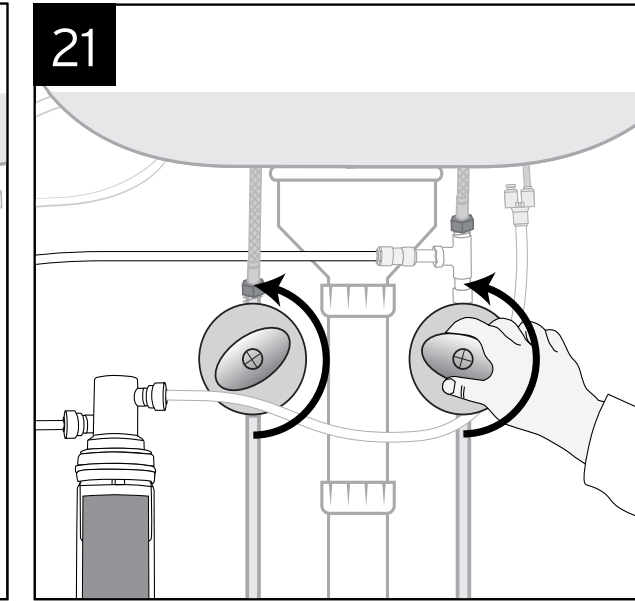
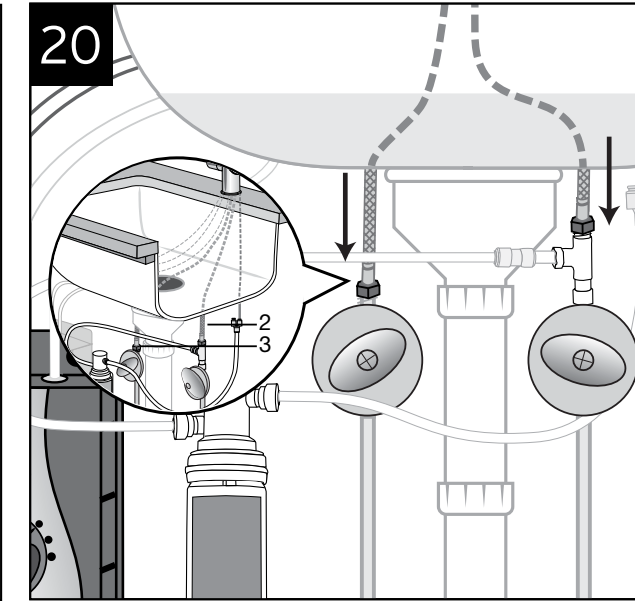
ENGLISH

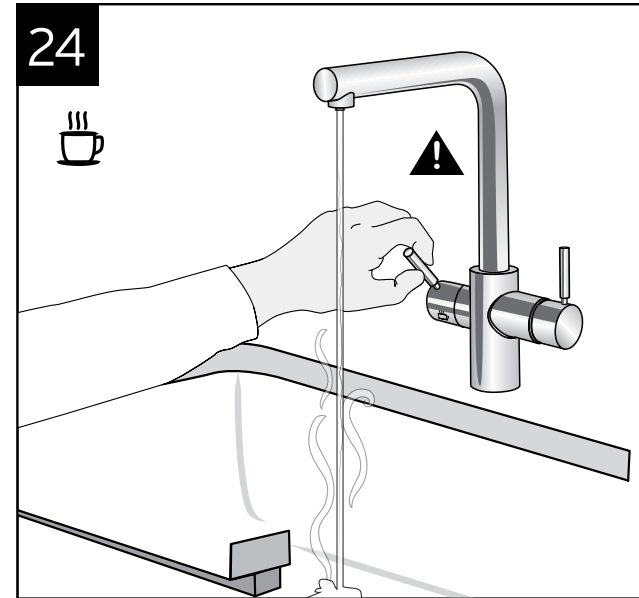
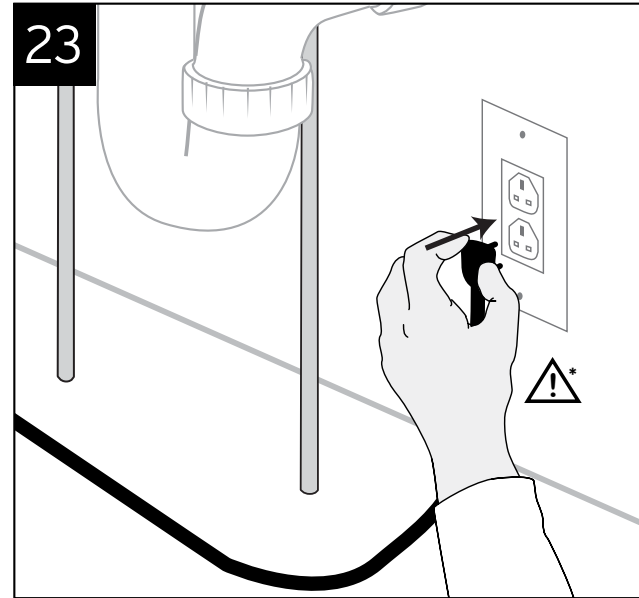
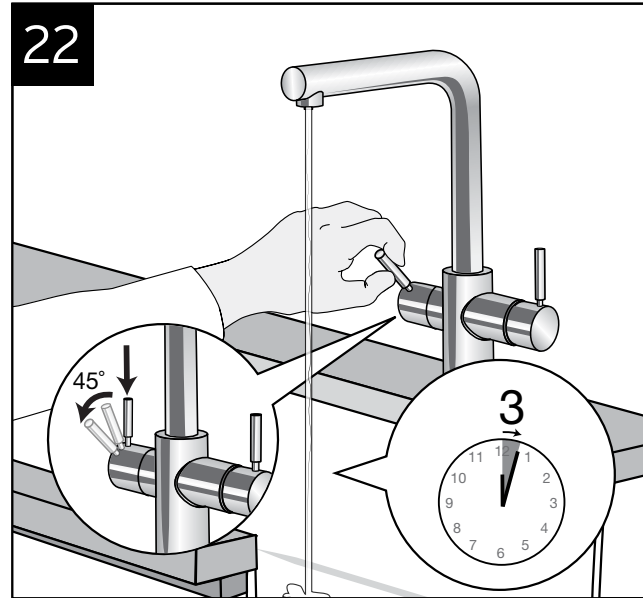
- * **NOTICE: Property Damage.** Tube runs need to form to the cabinet's contours to allow storage space with no sharp bends. Tubes need clean, perpendicular, burr-free cuts to ensure a true fit.
- * **NOTICE: Property Damage.** Join remaining tube to cold water supply only.



ENGLISH

Note: Check all connections to ensure they are tight and that there are no leaks.





ENGLISH

Note: Water will be cold at first. Allow 12-15 minutes for water to reach target temperature. Gurgling or hissing is normal during the initial heating cycle.

NOTICE: Property Damage. Do not use an extension lead with the tap. (A standard earthed outlet within 760 mm (30") of the tap is required under the sink.)

WARNING: Scalding Hazard. The tap dispenses near-boiling (98°C/210°F) water which can instantly cause scalds or burns. Use care when operating this appliance.

ENGLISH

5-YEAR IN-HOME FULL SERVICE LIMITED WARRANTY

STEAMING HOT TAP TROUBLESHOOTING

PROBLEM	POSSIBLE CAUSE	WHAT TO DO
Water and steam spits forcefully from spout without turning on the tap.	<ul style="list-style-type: none"> Unit is boiling. <i>May be normal during initial set-up.</i> 	<ul style="list-style-type: none"> Firmly grasp and twist hot water tap handle while pressing down activator button to release some water from the tank. Adjust water temperature using dial on tank front. Remember that at higher altitudes, water boils at lower temperatures.
Water is not hot.	<ul style="list-style-type: none"> The unit is unplugged. The electric outlet is inoperative. 	<ul style="list-style-type: none"> Make sure the unit is connected to a correctly earthed electric outlet. Make sure the circuit breaker or fuses are functioning correctly. Check that the outlet is not switched off.
Water is too hot or not hot enough.	<ul style="list-style-type: none"> Thermostat is not adjusted to your needs. 	<ul style="list-style-type: none"> Adjust the thermostat slowly, then firmly grasp and twist hot water tap handle while pressing down activator button for 20 seconds to bring in fresh water to be heated at the new setting. Allow 5-7 minutes for water to reach new temperature.
Water comes out of the vent instead of spout.	<ul style="list-style-type: none"> Outlet tube is blocked. 	<ul style="list-style-type: none"> Check that outlet tube is not kinked, twisted or pinched. Unscrew spout end piece and clean out any debris.
Water is dripping from the spout/vent intermittently.	<ul style="list-style-type: none"> The expansion chamber is not draining properly due to low water pressure. The spout is blocked. 	<ul style="list-style-type: none"> Unplug the unit. If the dripping does not stop after a few minutes, check the supply valve to ensure that it is fully open and there are no obstructions in the water line reducing the pressure below 30 psi (ie, a poorly mounted saddle valve, a clogged water filter or a partially opened shut-off valve). Unscrew spout end piece and clean out any debris.
Water is dripping from the spout/vent constantly.	<ul style="list-style-type: none"> Debris in the water line may be in the tap valve seat, causing a slow water leak. 	<ul style="list-style-type: none"> Unscrew spout end piece and clean out any debris. Firmly grasp and twist hot water tap handle while pressing down activator button 7-10 times to flush tap and lines.
Divided stream.	<ul style="list-style-type: none"> Debris in the end piece. 	<ul style="list-style-type: none"> Unscrew spout end piece and clean out any debris.
Water discolouration/rusty appearance.	<ul style="list-style-type: none"> Corrosion of unit. 	<ul style="list-style-type: none"> Unplug and drain unit as described in the Seasonal Storage/Drainage Section on page 15 of this manual. If the water discolouration remains after draining and refilling the unit, discontinue use and contact an authorised InSinkErator service agent.

CARE AND USE

WARNING: Electric Shock Hazard. To prevent electrical shock, disconnect power before servicing unit. Use only a properly earthed and polarised electric outlet.

NOTICE

- Regularly inspect the unit for any signs of leakage. If there are signs of water damage, immediately remove the unit from service.
- A drainage pan, plumbed to an appropriate drain or outfitted with a leak detector, should be used in those applications where any leakage could cause property damage.

CLEANING THE TAP

- Use only mild cleaners to clean the tap and plastic components.
- Cleaners with acids, abrasives, alkaline or organic solvents will result in deterioration of the plastic components and void the warranty.

PERSONAL INJURY

- Regularly check for signs of corrosion by examining the appearance of the dispensed water.
- If the water discolouration remains after draining and refilling the unit, discontinue use and contact an authorised InSinkErator service agent.