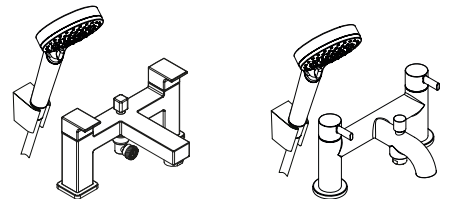
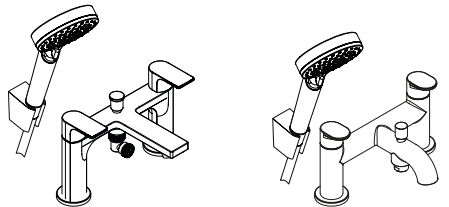
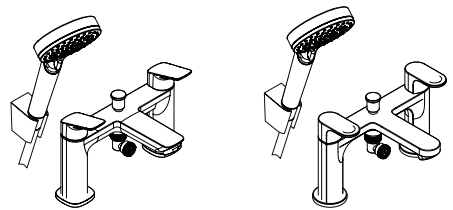
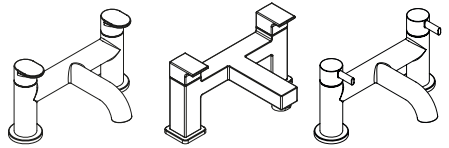


EN Instructions for use / Assembly instructions





Safety Notes

- ⚠ Gloves should be worn during installation to prevent crushing and cutting injuries.
- ⚠ The product may only be used for bathing, hygienic and body cleaning purposes.
- ⚠ The hot and cold supplies must be of equal pressures.

Installation Instructions

- Prior to installation, inspect the product for transport damages. After it has been installed, no transport or surface damage will be honoured.
- The pipes and the fixture must be installed, flushed and tested as per the applicable standards.
- The plumbing codes applicable in the respective countries must be observed.
- There must be an access door for maintenance.
- The mesh washer must be insert to protect the shower against incoming dirt by pipework. Incoming dirt leads to defects or/and can damage parts of the shower; such caused faults voids all liability and guarantee claims.

Technical Data

Operating pressure: max. 1 MPa
 Recommended operating pressure: 0,02 - 0,5 MPa
 Test pressure: 1,6 MPa
 (1 MPa = 10 bar = 147 PSI)

Hot water temperature: max. 60°C
 Thermal disinfection: 70°C / 4 min

The product is exclusively designed for drinking water!

Symbol description

 Do not use silicone containing acetic acid!

 **Maintenance** (see page 36)

The check valves must be checked regularly according to EN 806-5 in accordance with national or regional regulations (at least once a year).

 **Dimensions** (see page 38)

 **Flow diagram** (see page 44)

- ① Tub outlet
- ② Shower outlet

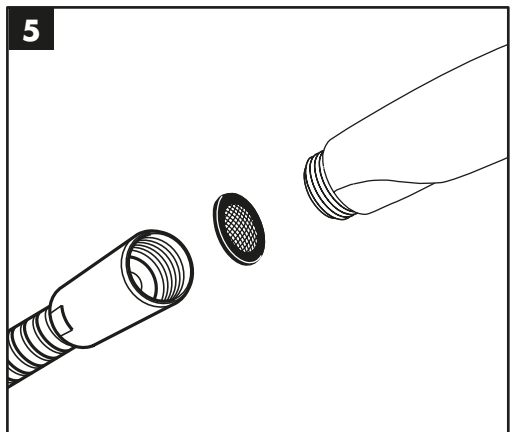
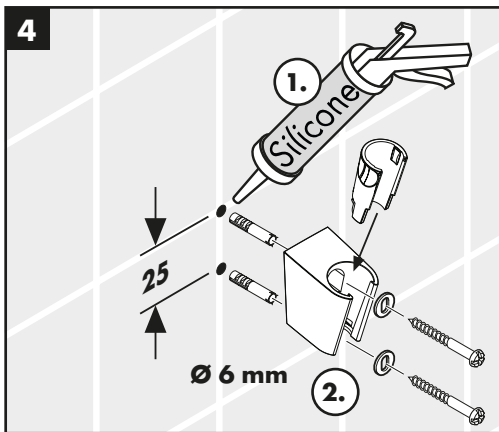
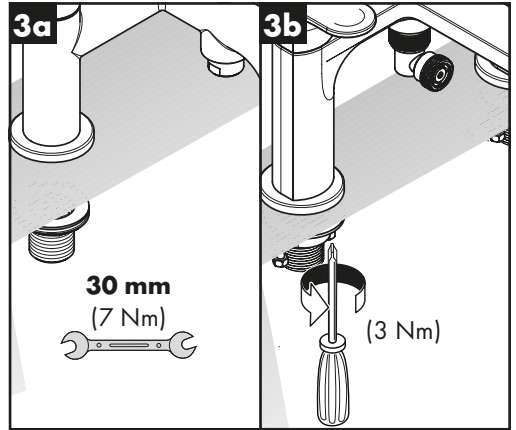
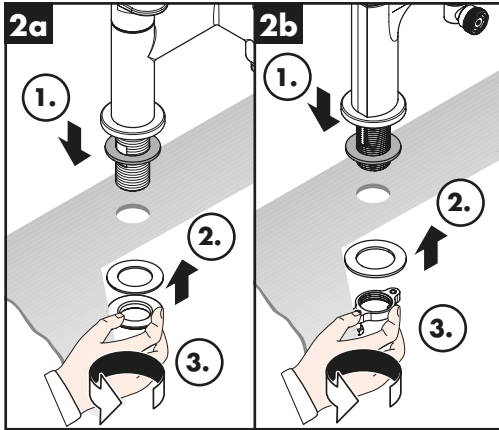
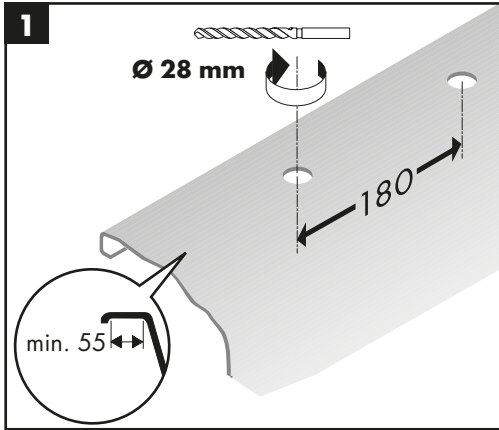
 **Spare parts** (see page 45)

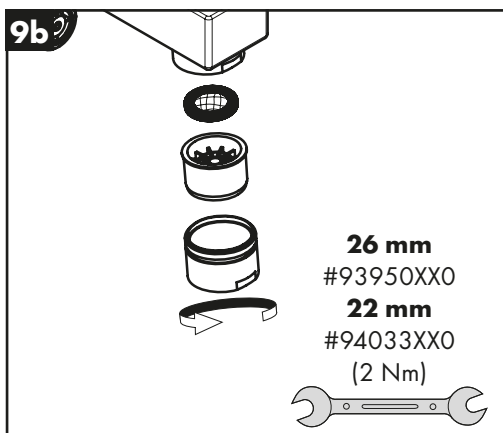
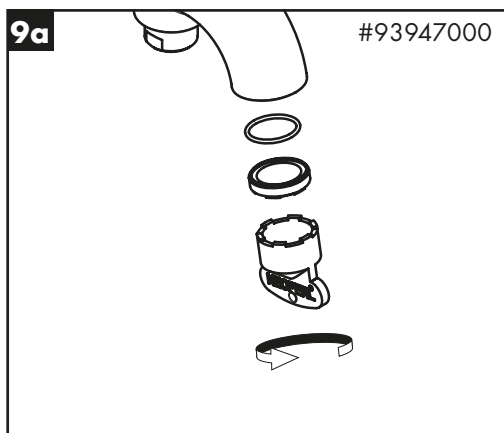
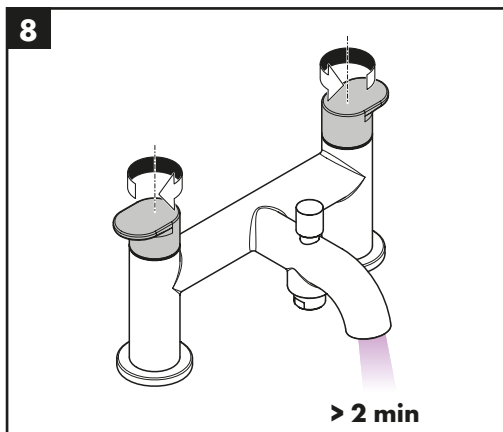
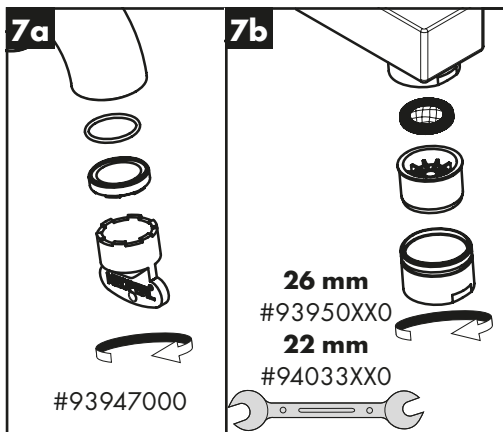
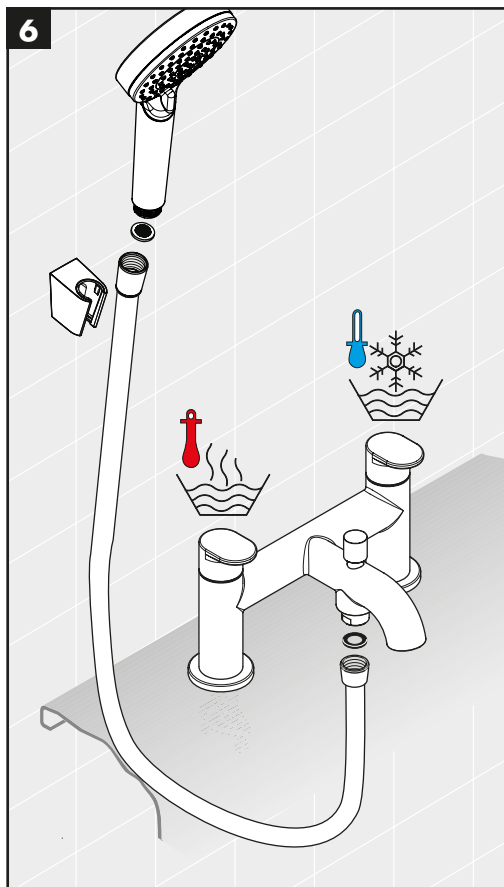
XX = Colors
 00 = Chrome Plated
 67 = Matt Black

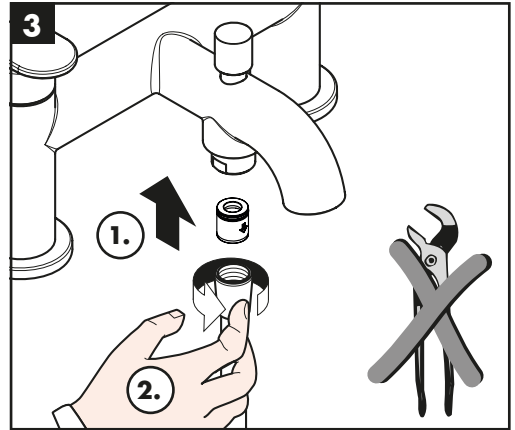
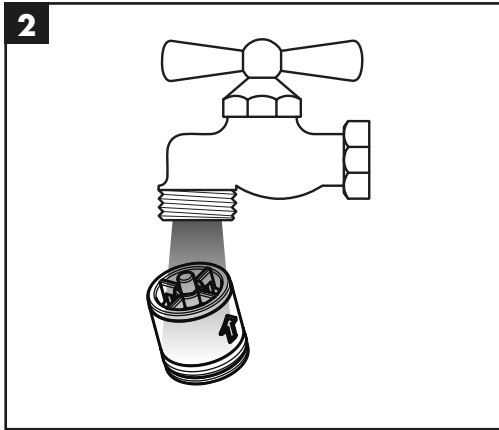
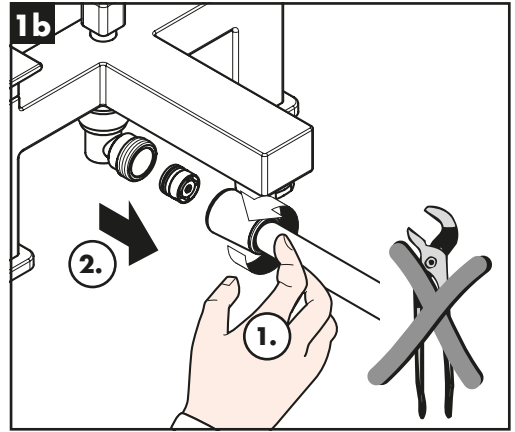
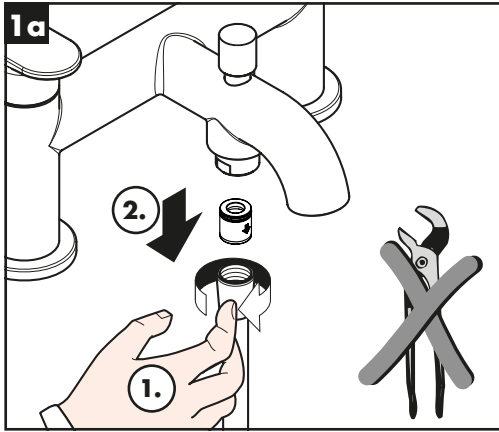
 **Cleaning** (see page 48)

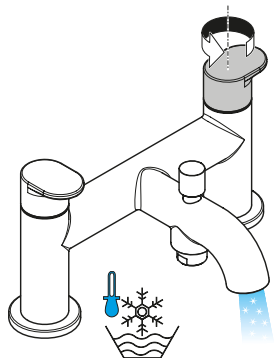
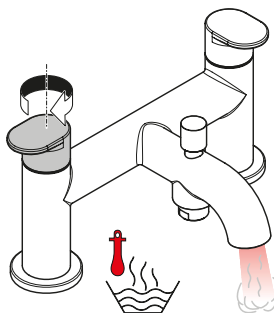
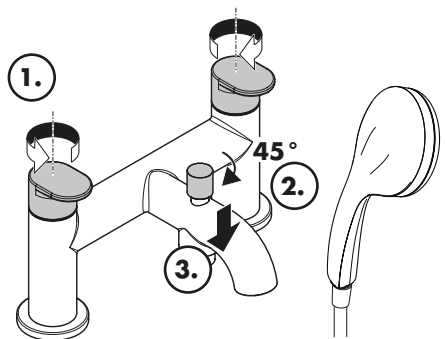
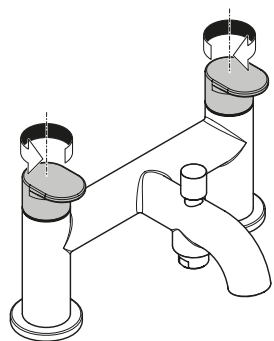
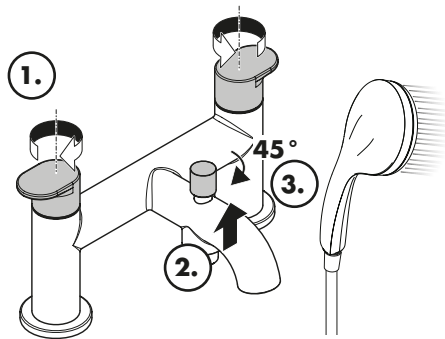
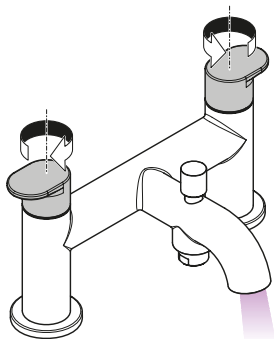
 **Operation** (see page 37)

Fault	Cause	Remedy
Insufficient water	- Shower filter seal dirty	- Clean filter seal between shower and hose
	- check valve hasn't moved back	- Exchange check valves
Instantaneous heater didn't work	- Shower filter seal dirty	- Clean filter seal between shower and hose
	- check valve hasn't moved back	- Exchange check valves



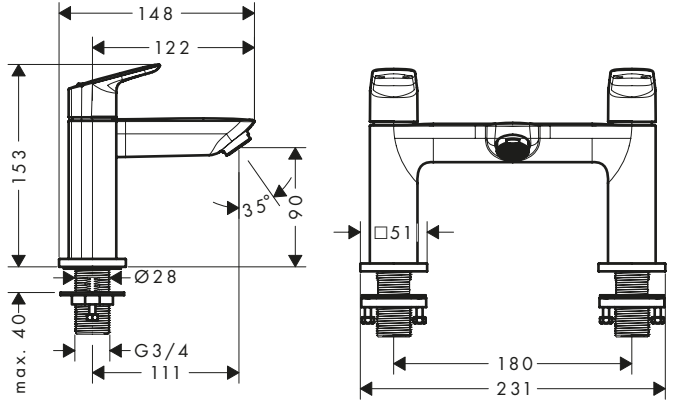




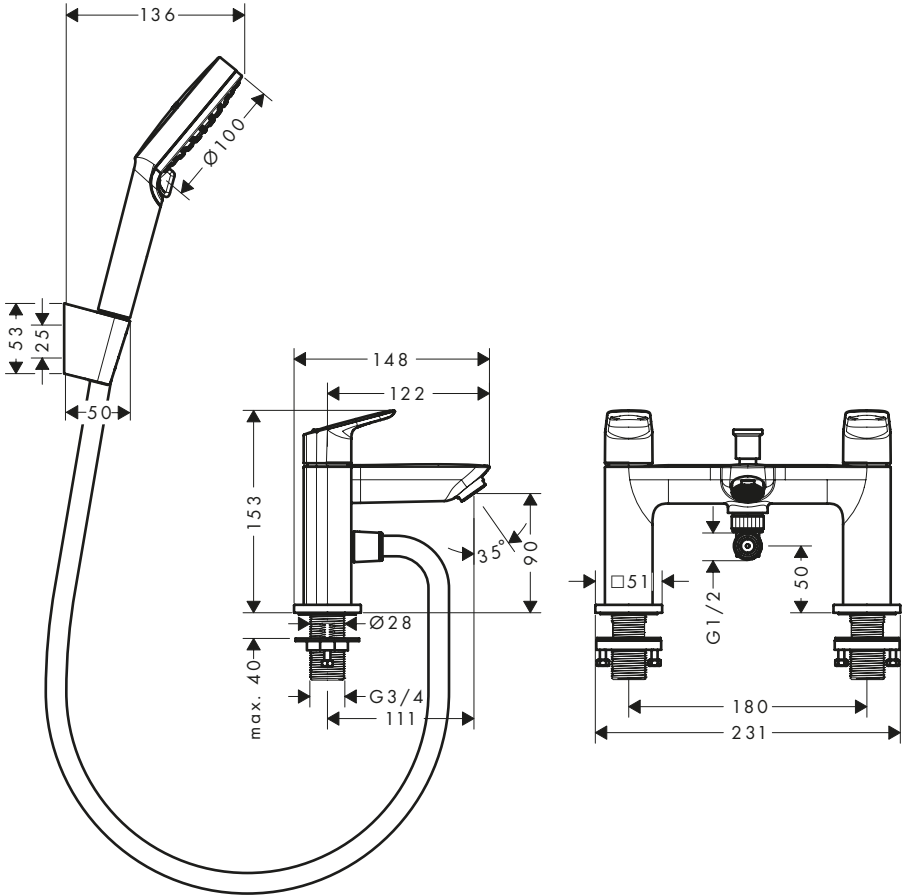




Logis
71437XX0

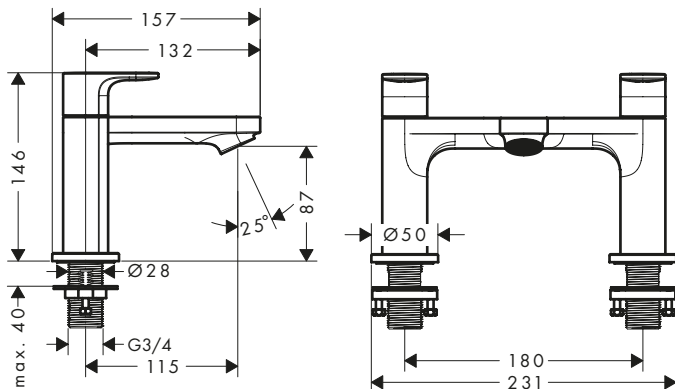


Logis
71438XX0

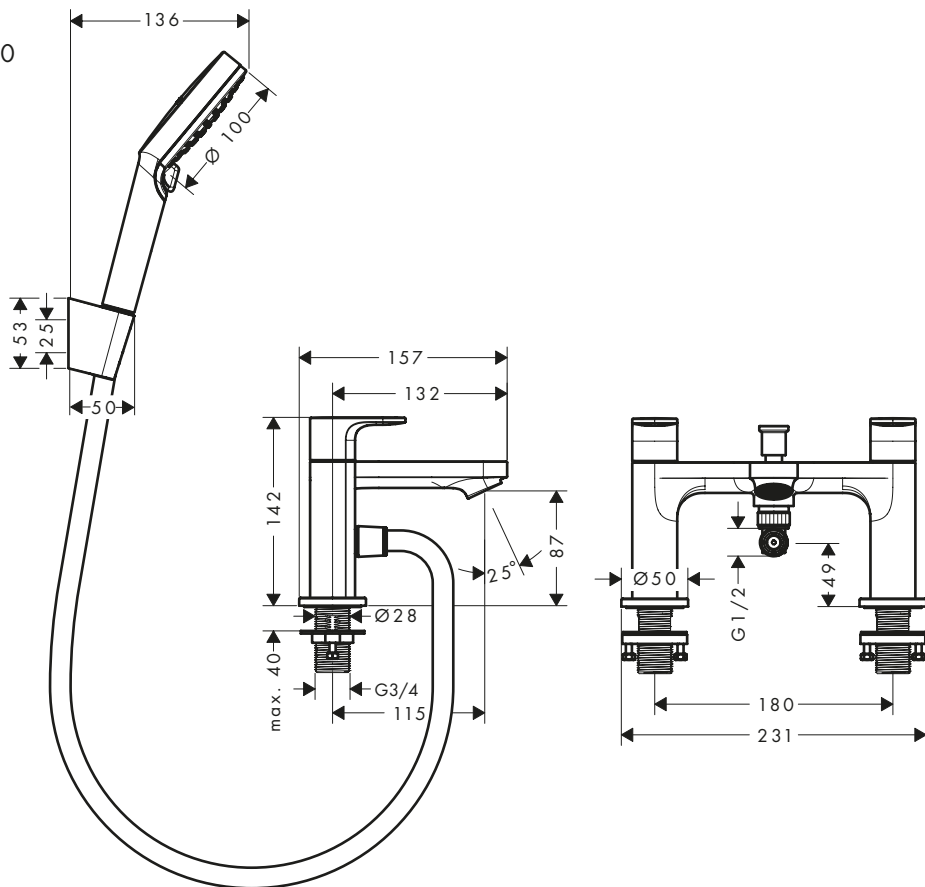




Rebris S
72446XX0

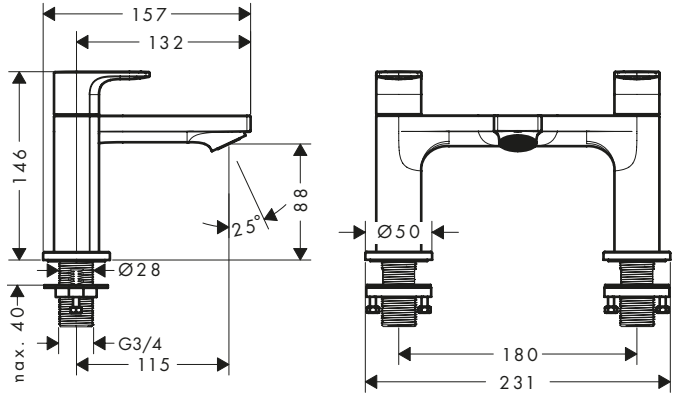


Rebris S
72447XX0

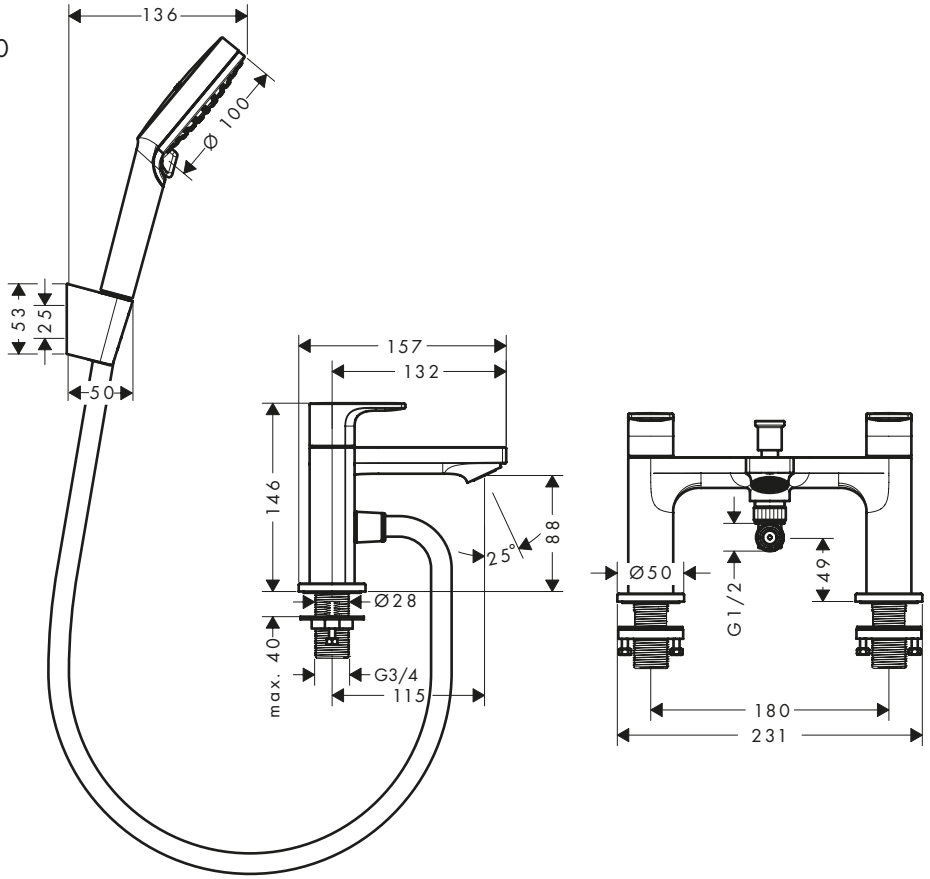




Rebris E
72480XX0



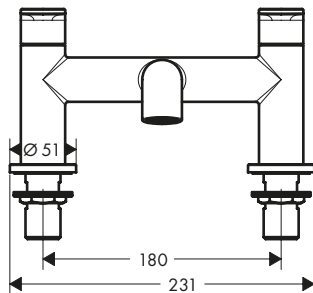
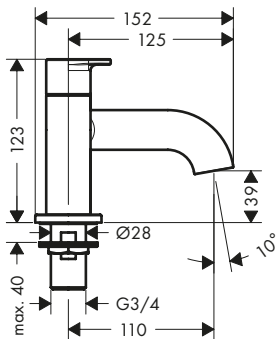
Rebris E
72481XX0





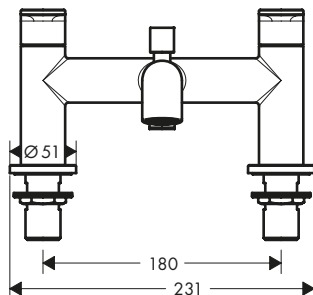
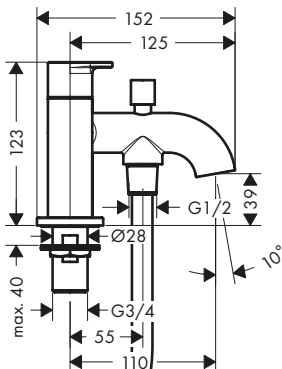
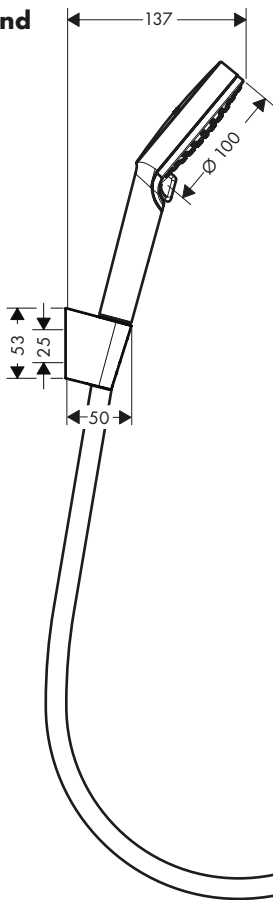
Vernis Blend

71442XX0



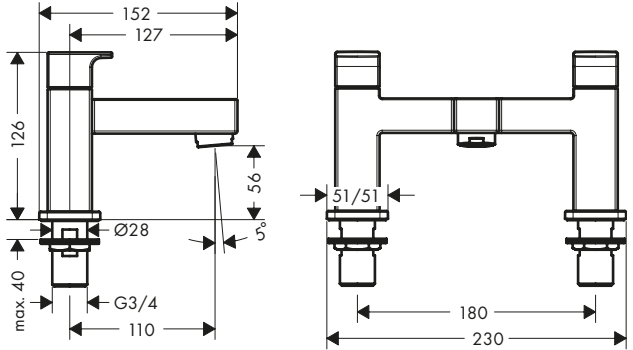
Vernis Blend

71461XX0

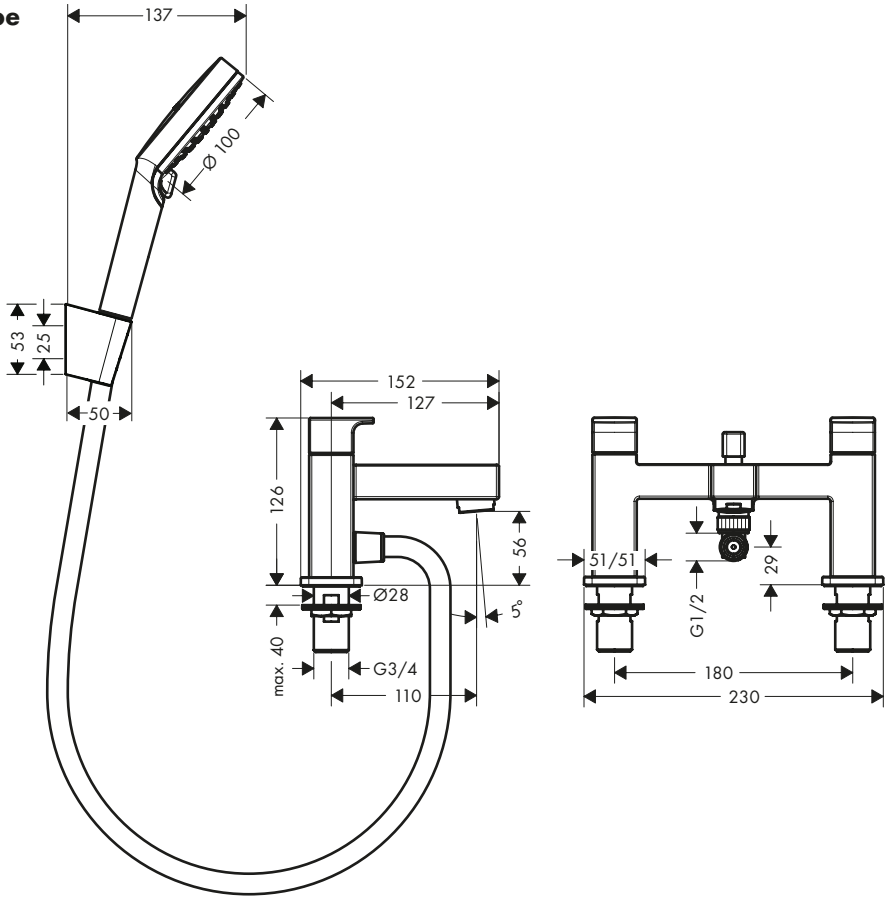




Vernis Shape
71452XX0

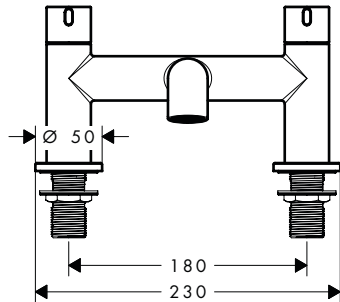
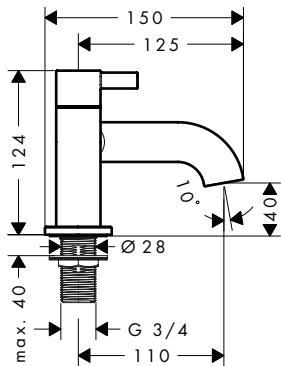


Vernis Shape
71462XX0

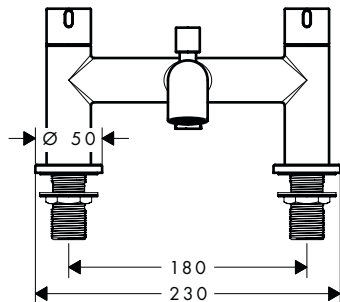
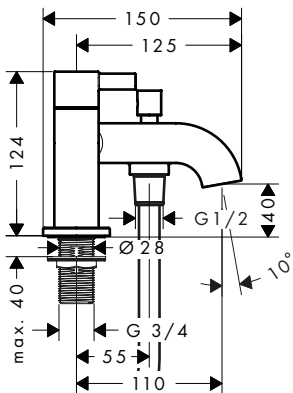
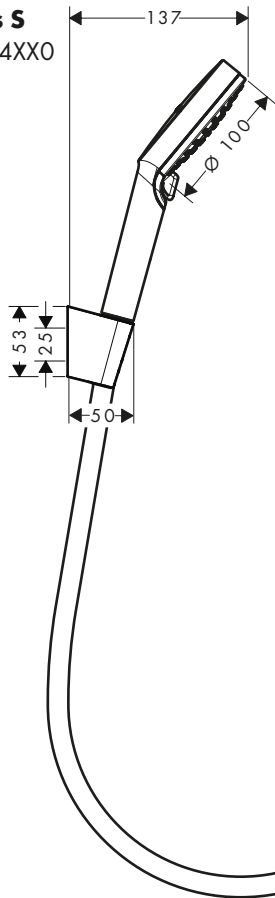




Zesis S
74423XX0



Zesis S
74424XX0





Logis

71437XX0

Rebris S

72446XX0

Rebris E

72480XX0

Vernis Blend

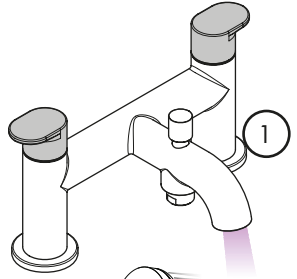
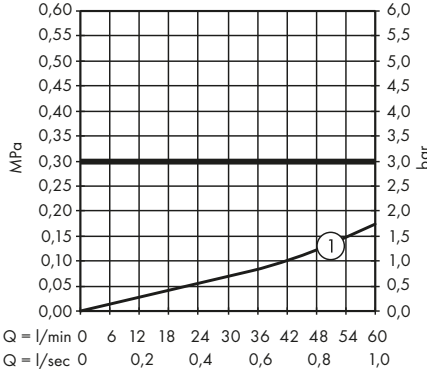
71442XX0

Vernis Shape

71452XX0

Zesis S

74423XX0



Logis

71438XX0

Rebris S

72447XX0

Rebris E

72481XX0

Vernis Blend

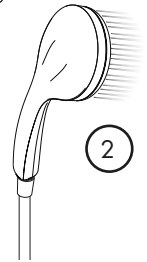
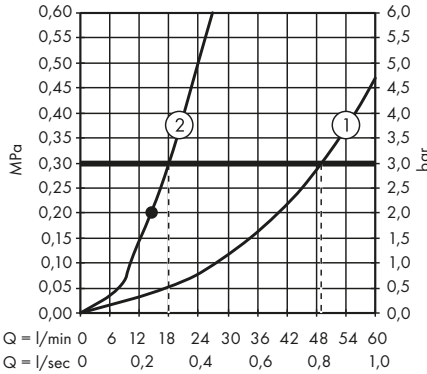
71461XX0

Vernis Shape

71462XX0

Zesis S

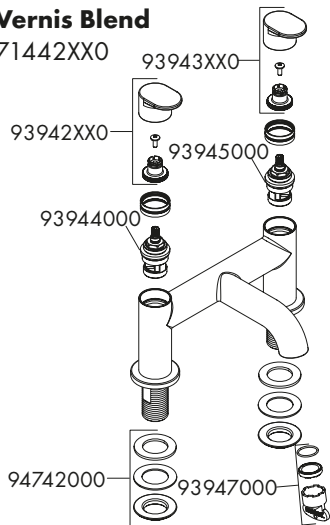
74424XX0





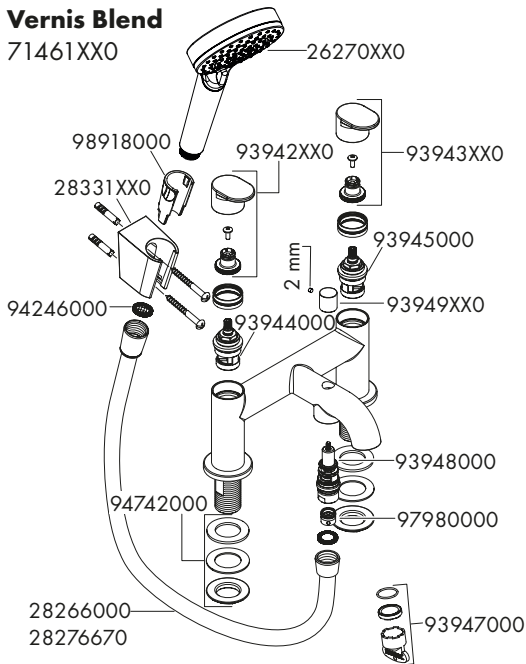
Vernis Blend

71442XX0



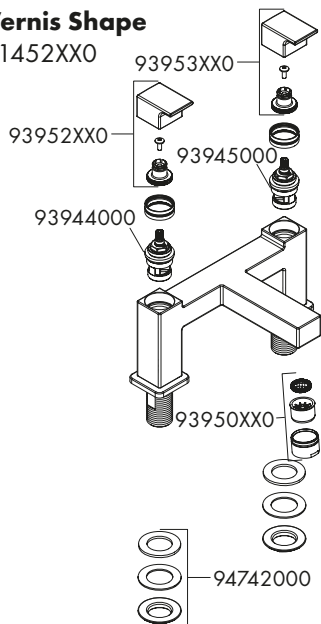
Vernis Blend

71461XX0



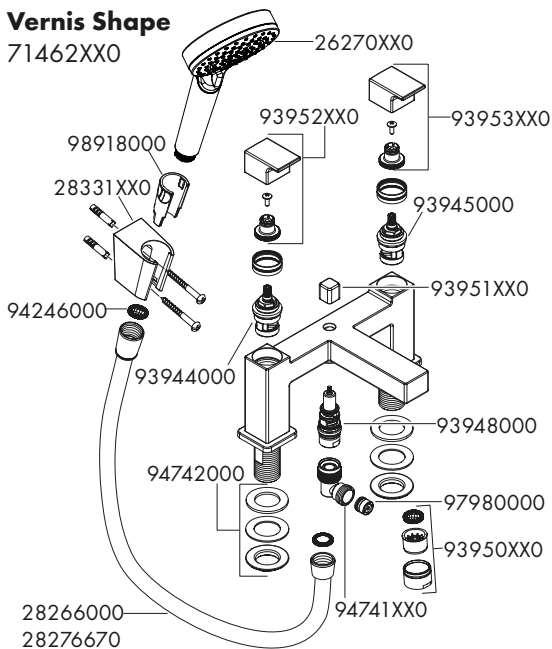
Vernis Shape

71452XX0



Vernis Shape

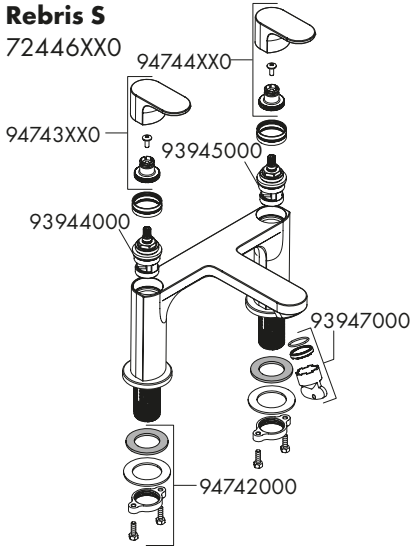
71462XX0





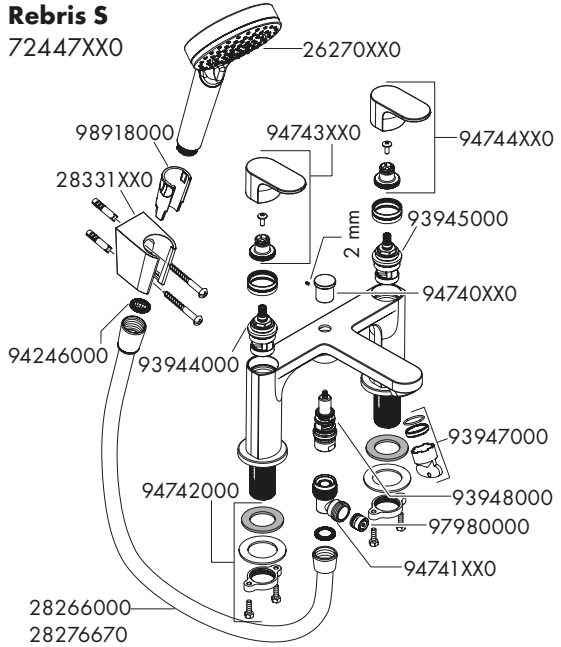
Rebris S

72446XX0



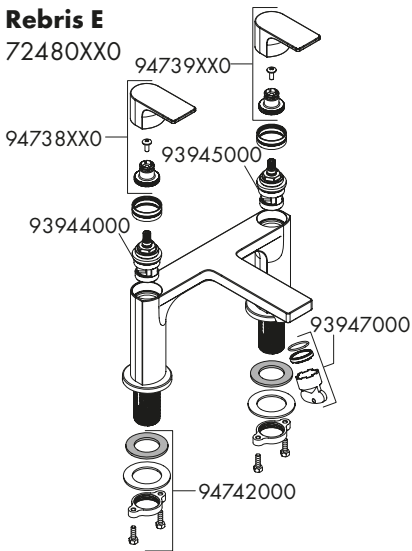
Rebris S

72447XX0



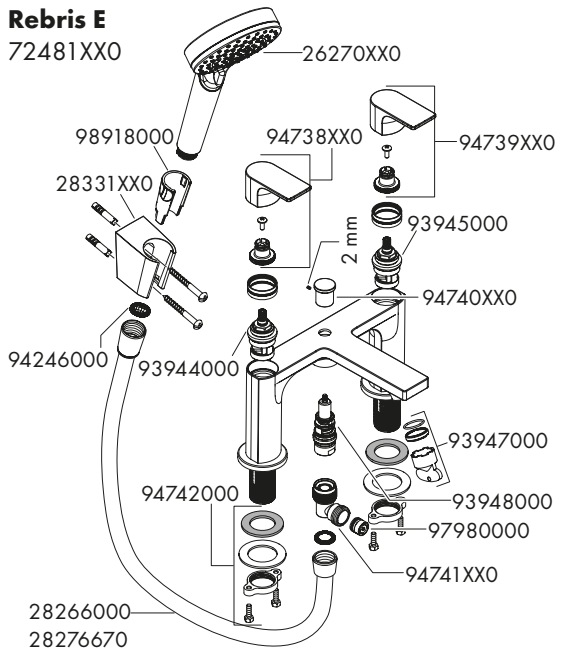
Rebris E

72480XX0



Rebris E

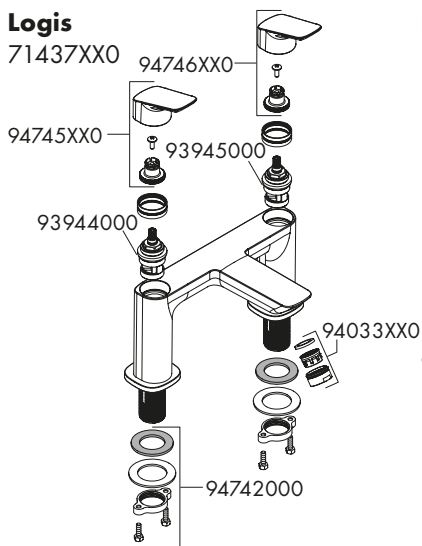
72481XX0





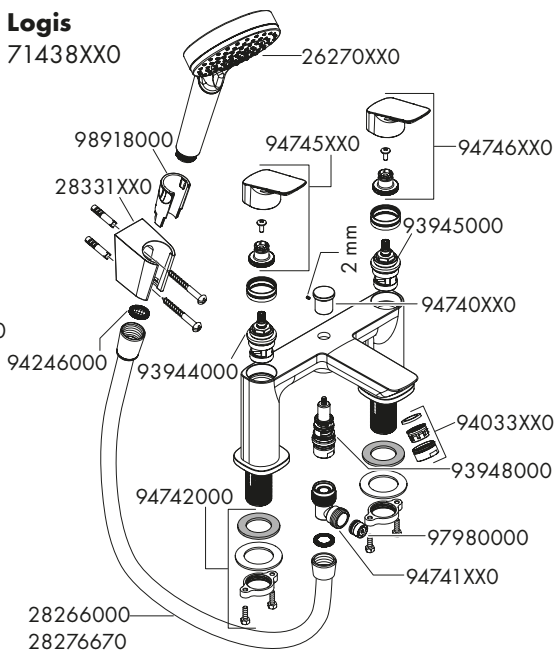
Logis

71437XX0



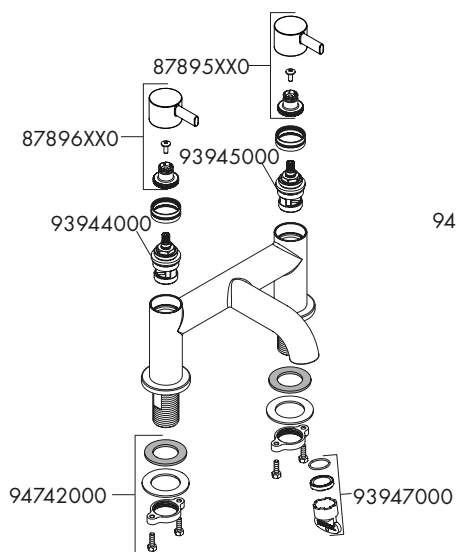
Logis

71438XX0



Zesis S

74423XX0



Zesis S

74424XX0

