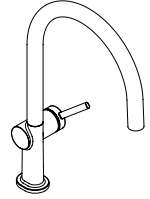


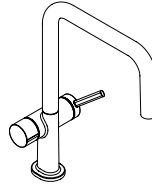
**Talis M54 U 220**  
**1jet**  
72806XXX



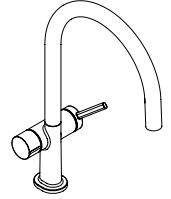
**Talis M54 220**  
**1jet**  
72804XXX

**Talis M54 U 220**  
**Eco 1jet**  
72844XXX

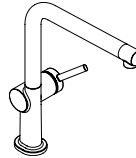
**Talis M54 220**  
**Eco 1jet**  
72843XXX



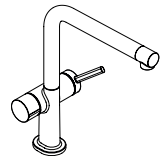
**Talis M54 220**  
**1jet**  
72807XXX



**Talis M54 220**  
**1jet**  
72805XXX



**Talis M54 270**  
**1jet**  
72840XXX



**Talis M54 270**  
**1jet**  
72827XXX



## Safety Notes

- △ Gloves should be worn during installation to prevent crushing and cutting injuries.
- △ The hot and cold supplies must be of equal pressures.

## Installation Instructions

- Prior to installation, inspect the product for transport damages. After it has been installed, no transport or surface damage will be honoured.
- The pipes and the fixture must be installed, flushed and tested as per the applicable standards.
- The plumbing codes applicable in the respective countries must be observed.
- **72805XXX, 72807XXX, 72827XXX:** Only dishwashers and washing machines certified with the DVGW emblem may be connected to the appliance connection valve without an additional fuse.
- **72843XXX, 72844XXX:** The mixer can not used together with a continuous flow water heater.

## Technical Data

Operating pressure: max. 1 MPa  
 Recommended operating pressure: 0,1 - 0,5 MPa  
 Test pressure: 1,6 MPa  
 (1 MPa = 10 bar = 147 PSI)

Hot water temperature: max. 60 °C  
 Thermal disinfection: 70 °C / 4 min

The product is exclusively designed for drinking water!

## Symbol description



Do not use silicone containing acetic acid!



## Adjustment (see page 38)

To adjust the hot water limiter. Using a hot water limiter in combination with a continuous flow water heater is not recommended.



## Dimensions (see page 40)



## Flow diagram (see page 40)



## Spare parts (see page 53)

XXX = Colors  
 000 = Chrome Plated  
 670 = Matt Black  
 800 = Stainless Steel Optic

## Special accessories (order as an extra)



Adapter (G<sup>3</sup>/<sub>8</sub> / G<sup>1</sup>/<sub>2</sub>)  
 #93395000 (see page 51 / 52)



## Cleaning (see page 46)



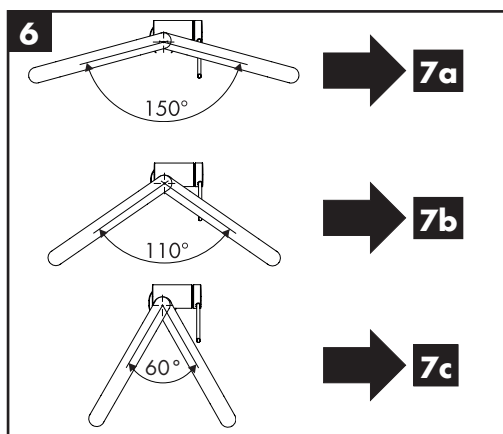
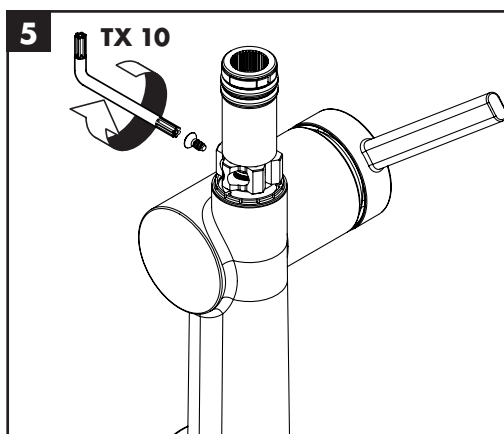
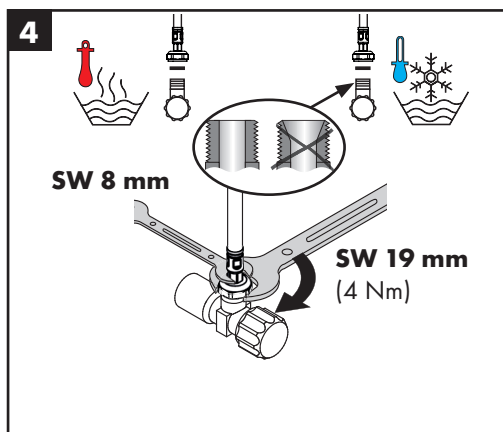
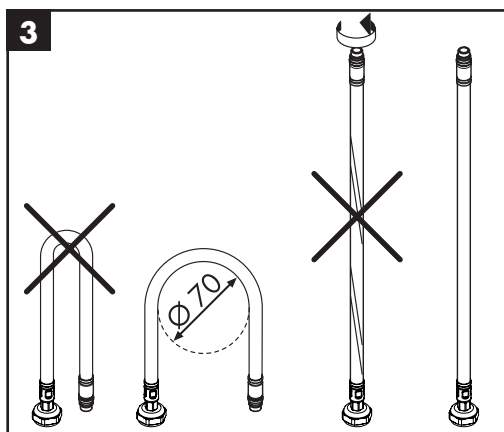
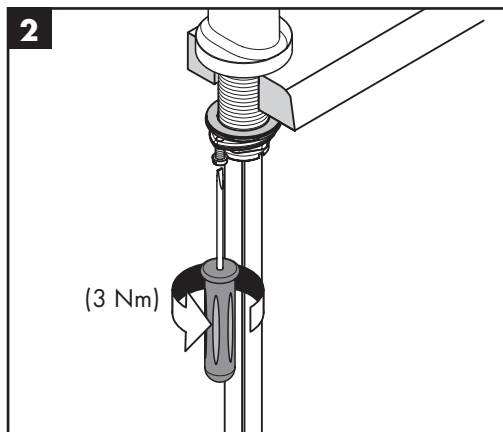
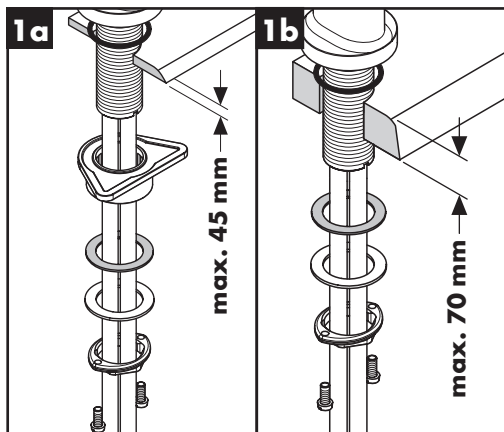
## Operation (see page 39)

Hansgrohe recommends not to use as drinking water the first half liter of water drawn in the morning or after a prolonged period of non-use.



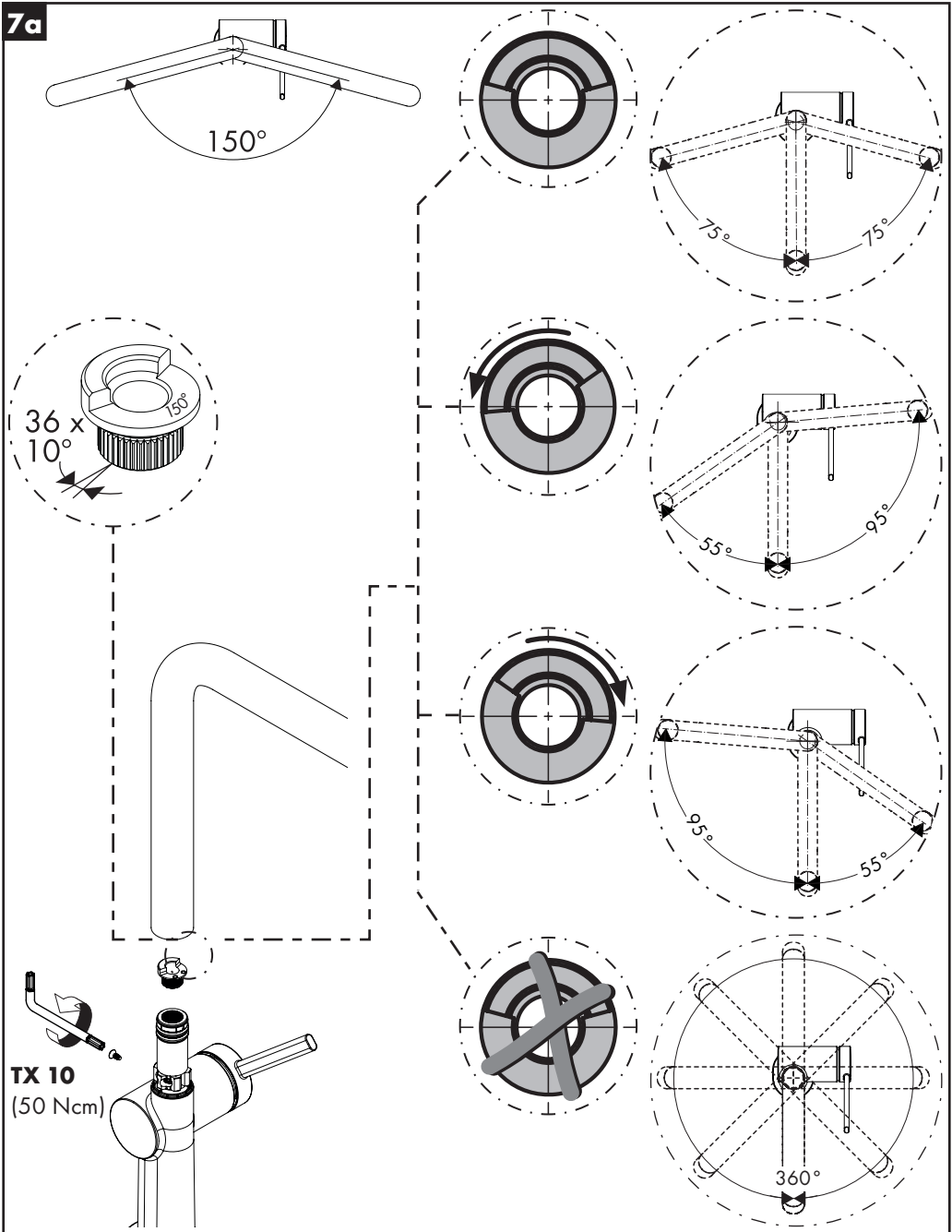
## Test certificate (see page 56)

Fault	Cause	Remedy
Mixer stiff	- Cartridge defective, calcified	- Exchange cartridge
Mixer dripping	- Cartridge defective	- Exchange cartridge
Water escaping at the threaded base	- connection hoses not completely screwed into basic body	- Tighten connection hoses by hand
	- O-ring at the connection hose defective.	- Exchange O-ring
Hot water temperature too low	- Hot water limiter incorrectly set	- Set hot water limiter



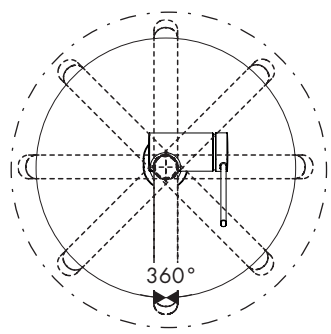
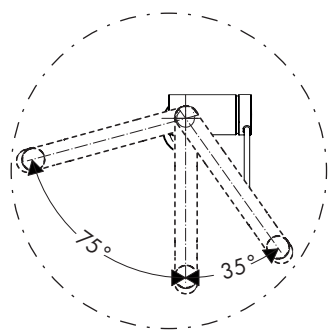
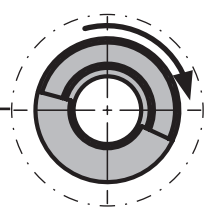
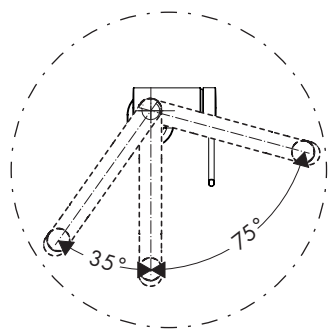
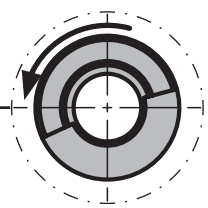
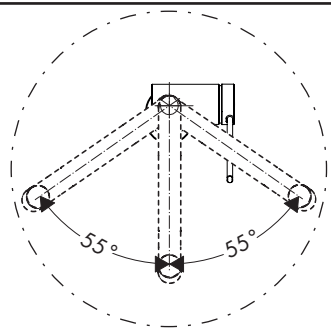
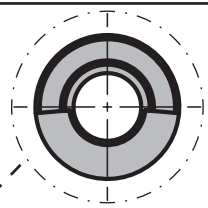
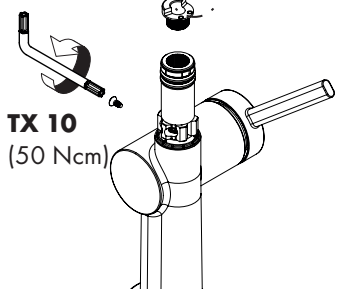
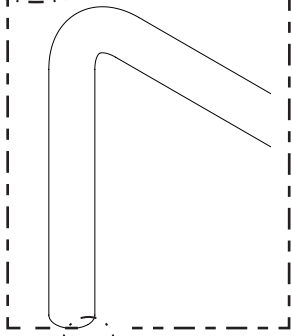
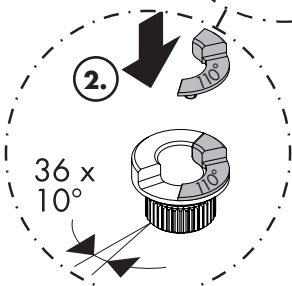
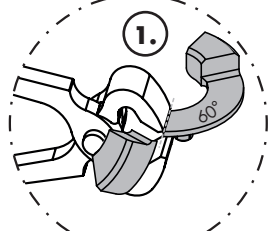
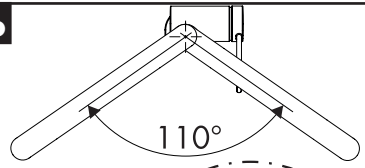


7a



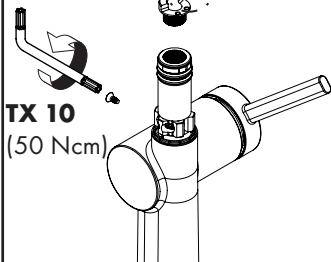
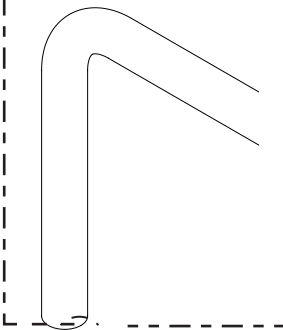
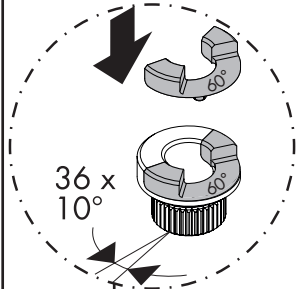
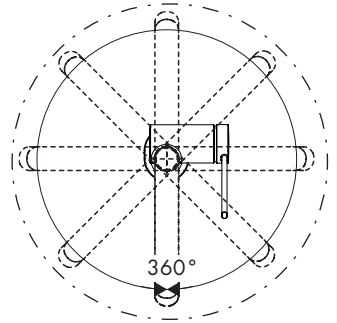
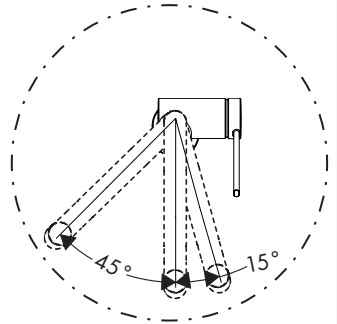
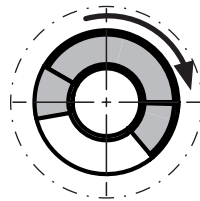
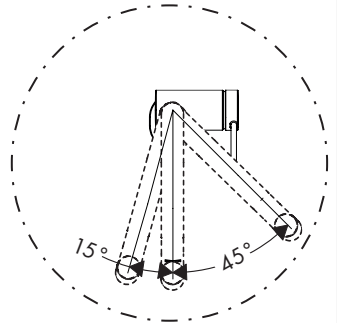
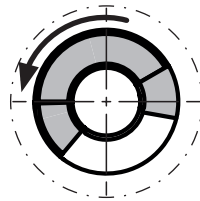
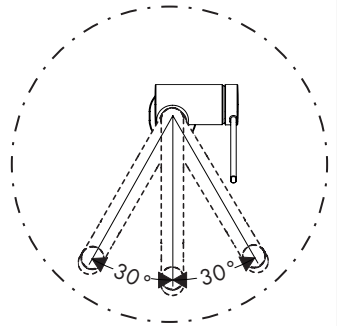
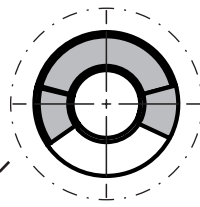
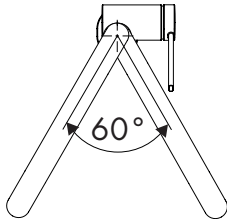


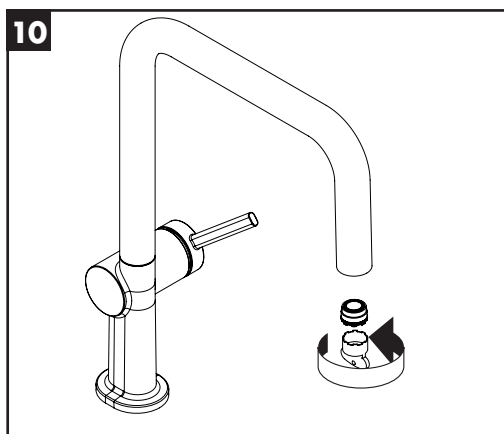
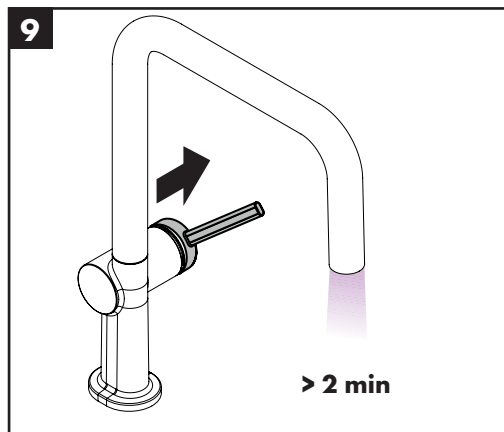
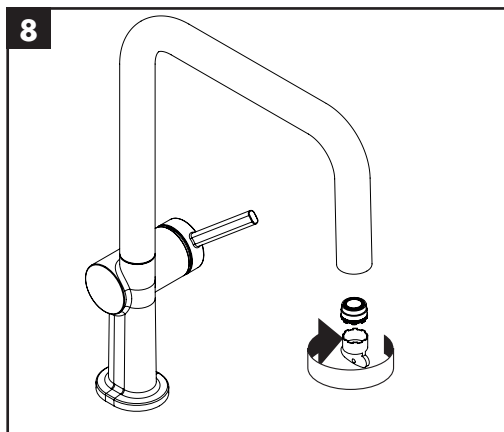
7b





7c







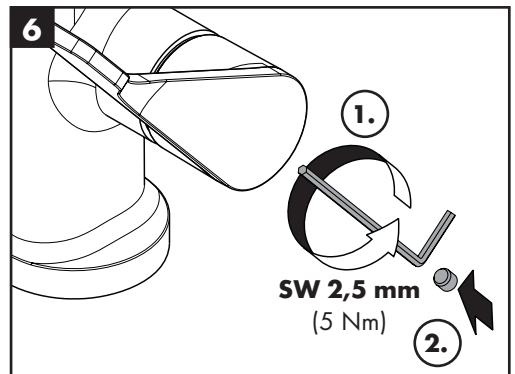
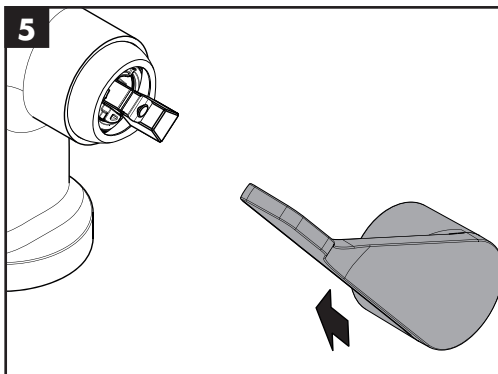
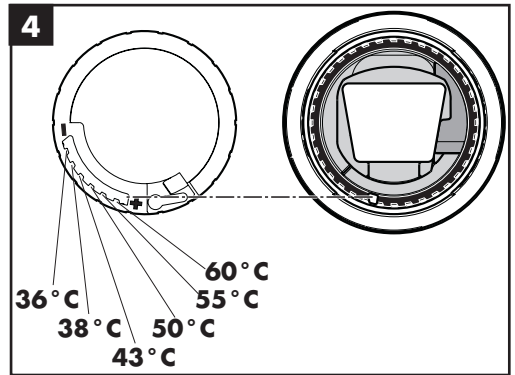
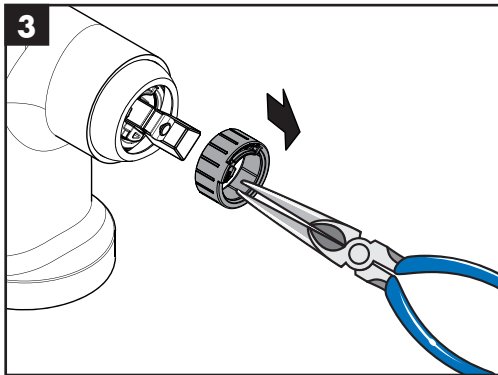
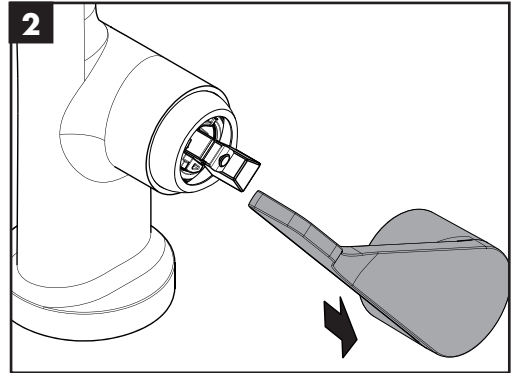
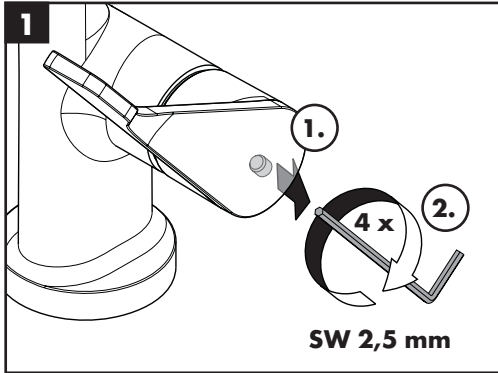
60 °C

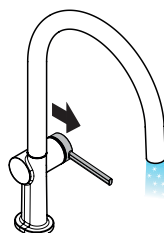
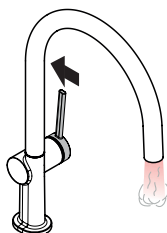
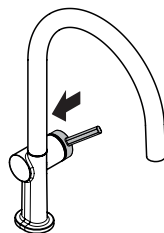
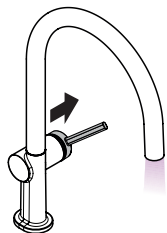


10 °C



0,3 MPa

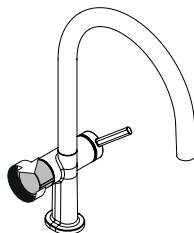
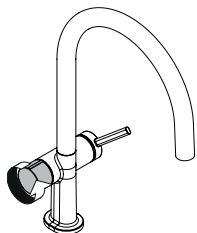




**Talis M54 220 1jet**  
72805XXX

**Talis M54 220 1jet**  
72807XXX

**Talis M54 270 1jet**  
72827XXX



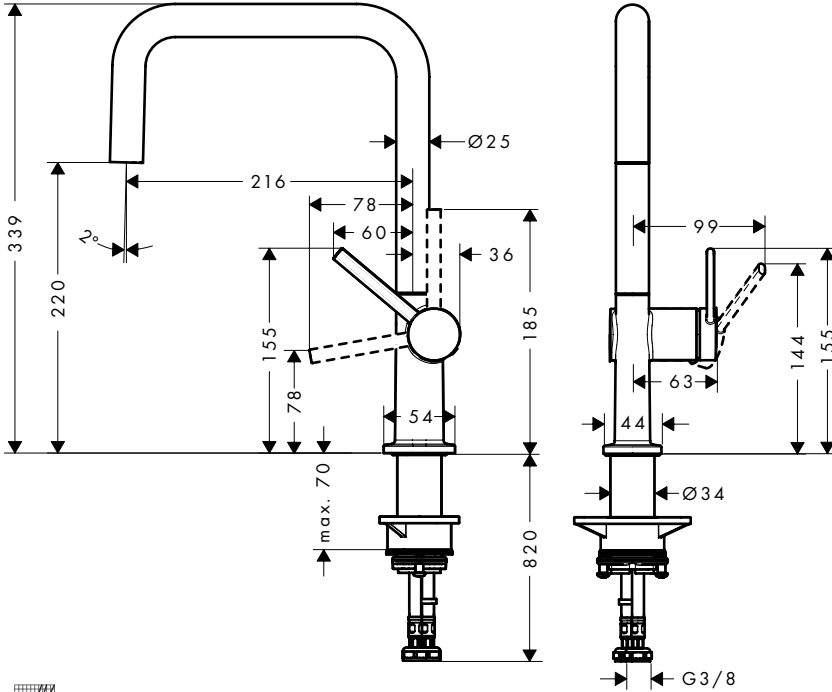


### Talis M54 U 220 1jet

72806XXX

### Talis M54 U 220 Eco 1jet

72844XXX

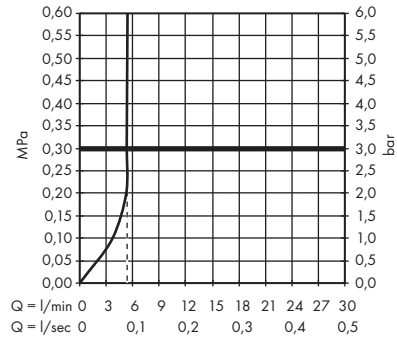
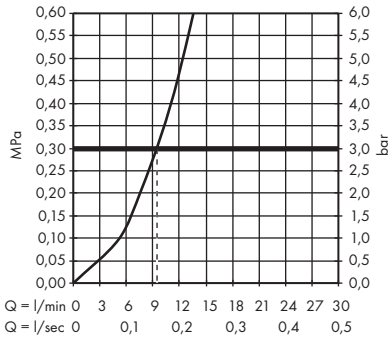


### Talis M54 U 220 1jet

72806XXX

### Talis M54 U 220 Eco 1jet

72844XXX



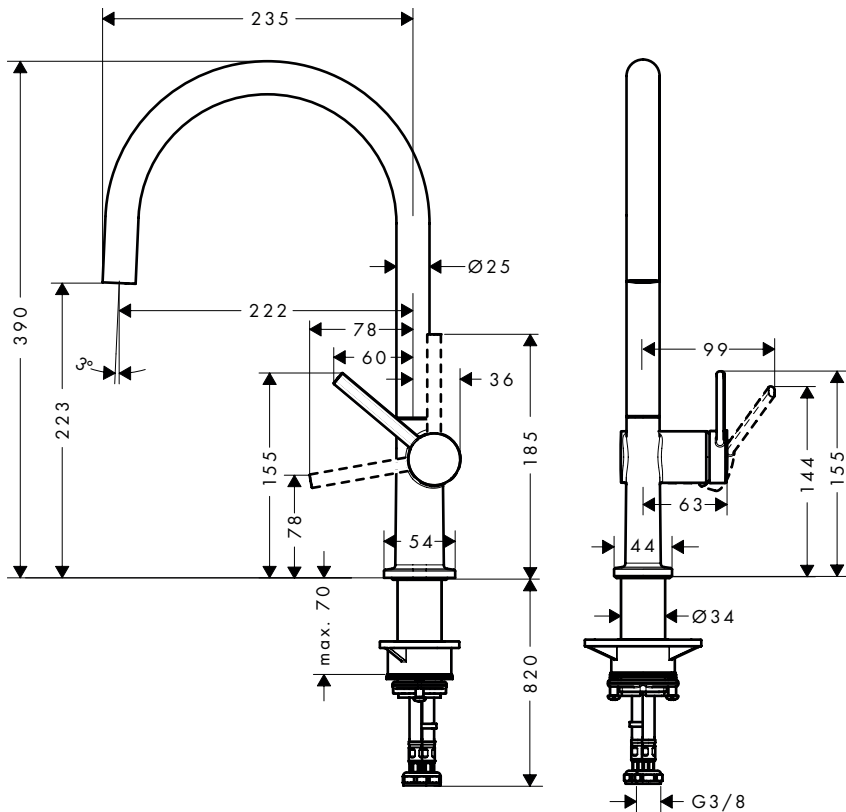


### Talis M54 220 1jet

72804XXX

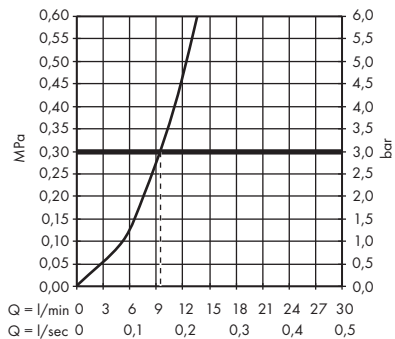
### Talis M54 220 Eco 1jet

72843XXX



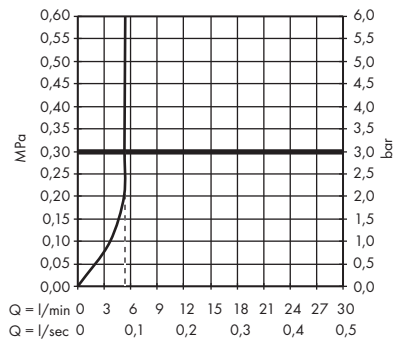
### Talis M54 220 1jet

72804XXX



### Talis M54 220 Eco 1jet

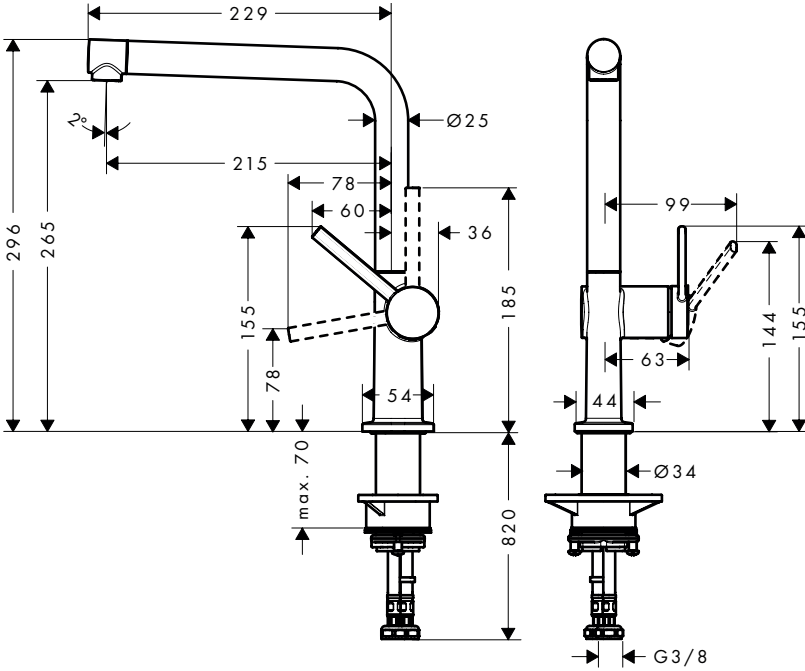
72843XXX





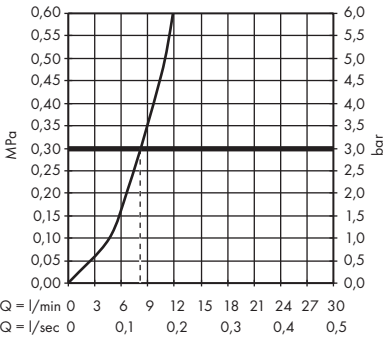
# Talis M54 270 1jet

72840XXX



# Talis M54 270 1jet

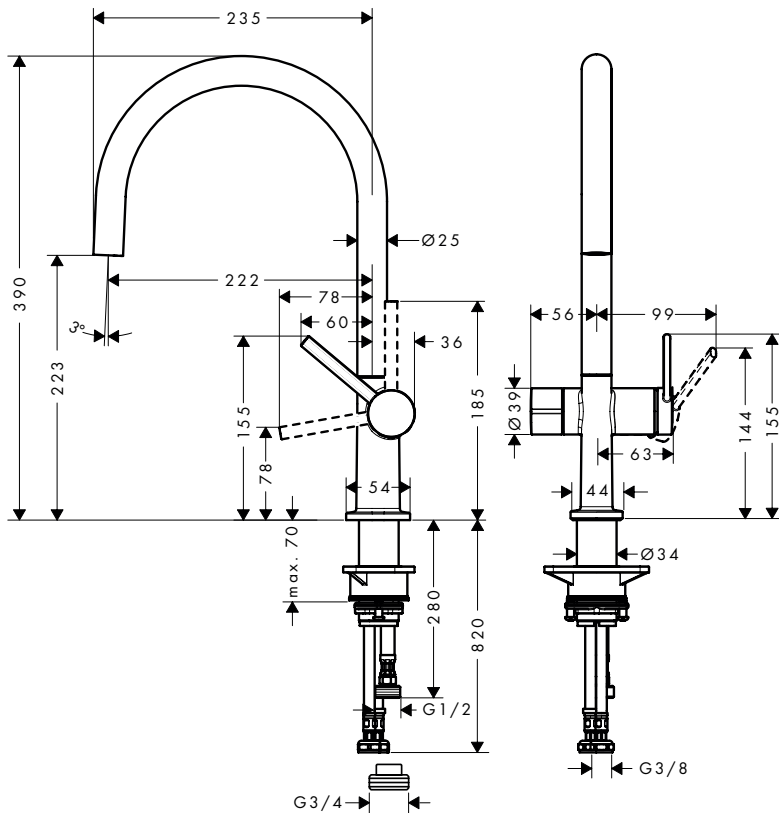
72840XXX





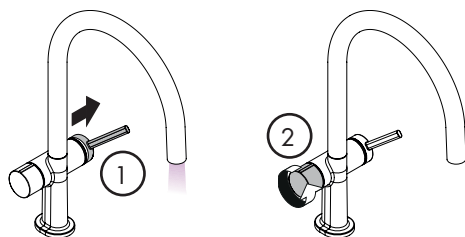
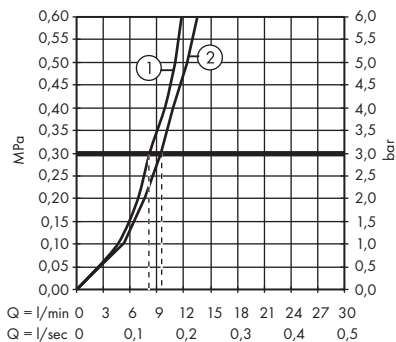
# Talis M54 220 1jet

72805XXX



# Talis M54 220 1jet

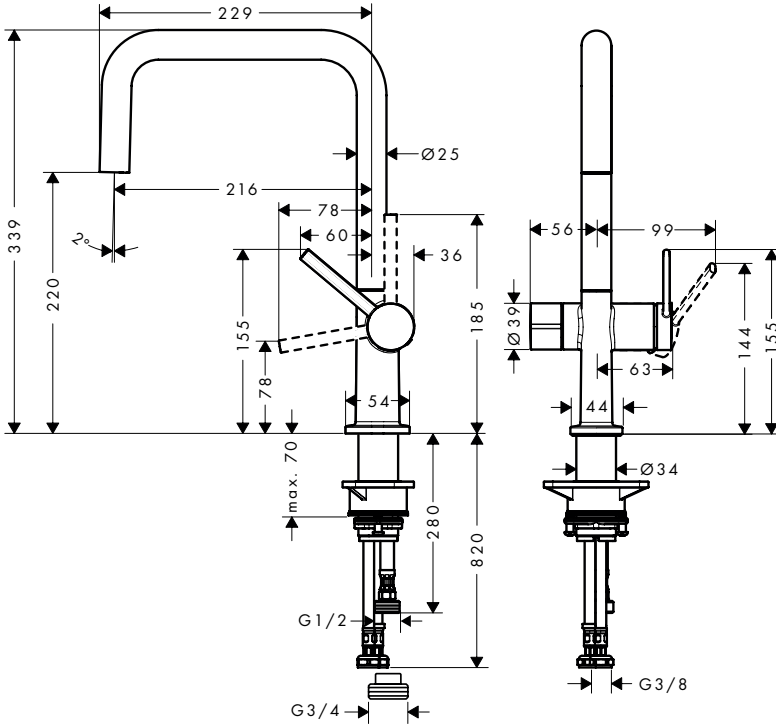
72805XXX





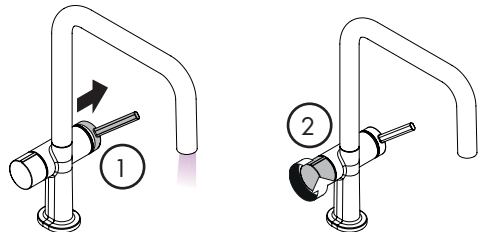
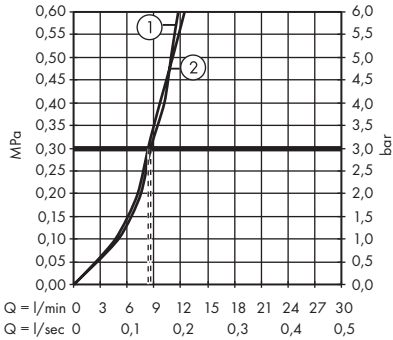
# Talis M54 220 1jet

72807XXX



# Talis M54 220 1jet

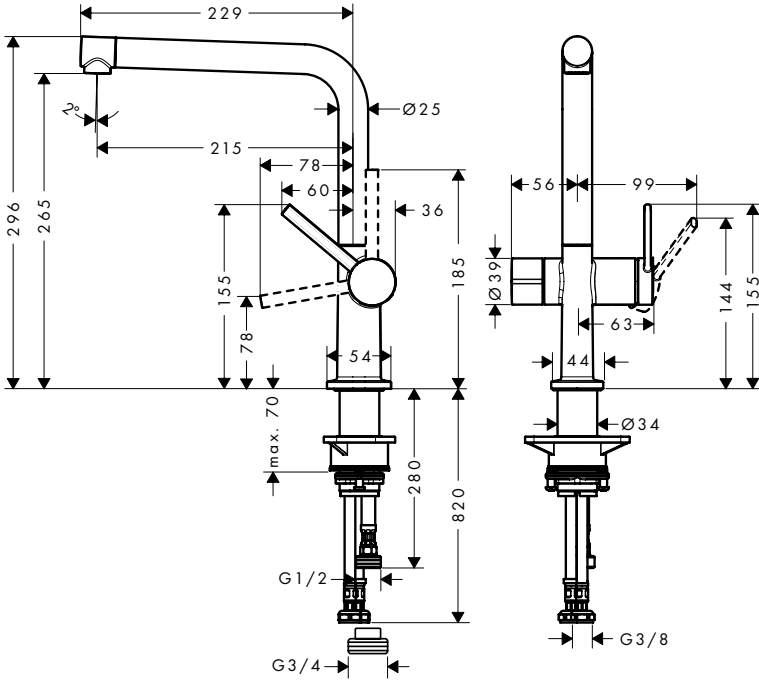
72807XXX





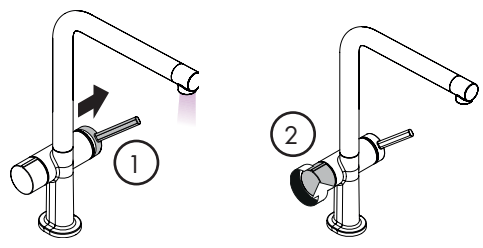
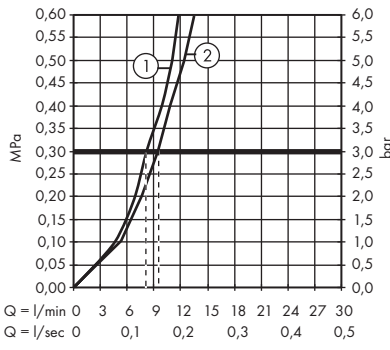
# Talis M54 270 1jet

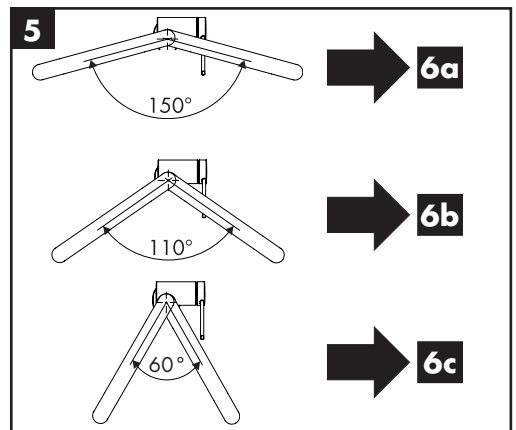
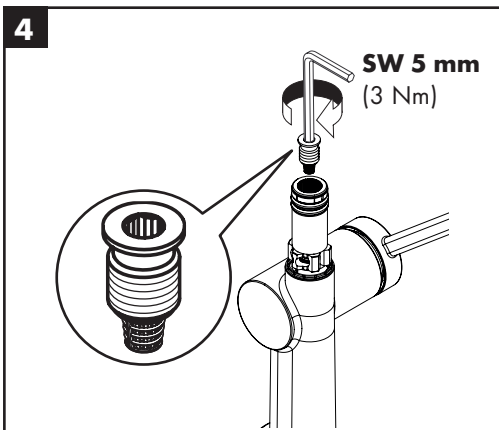
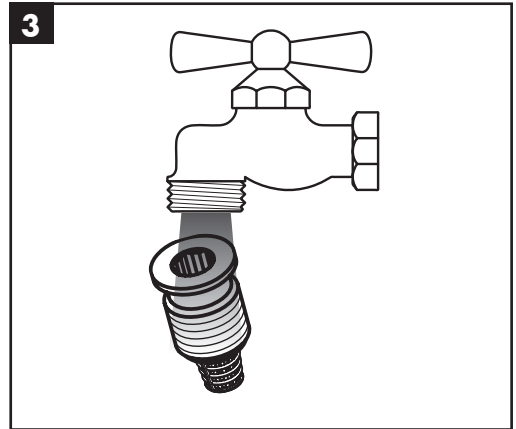
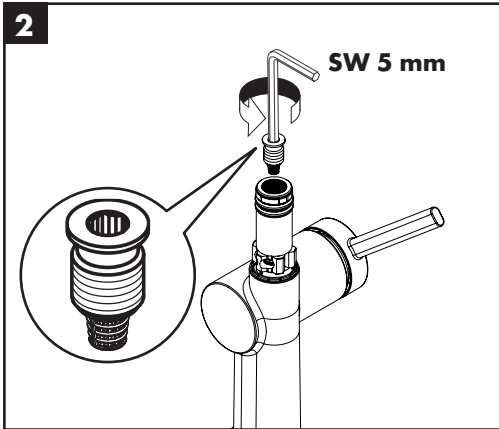
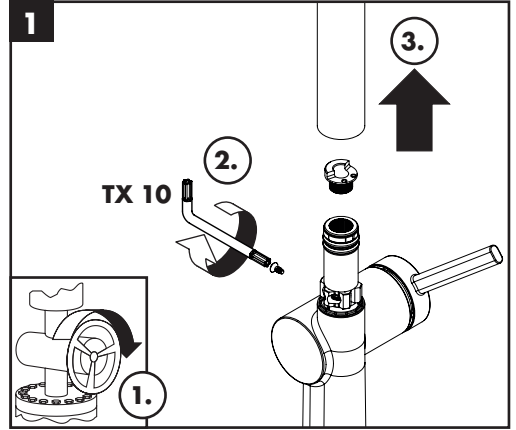
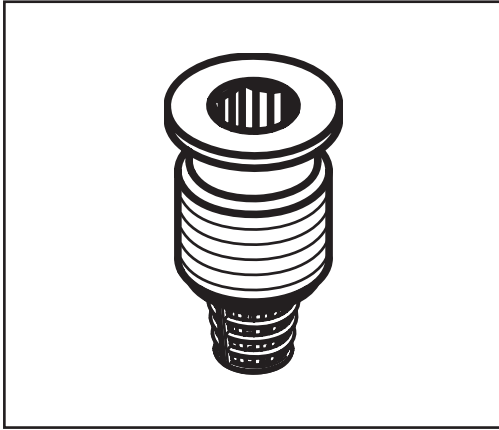
72827XXX



# Talis M54 220 1jet

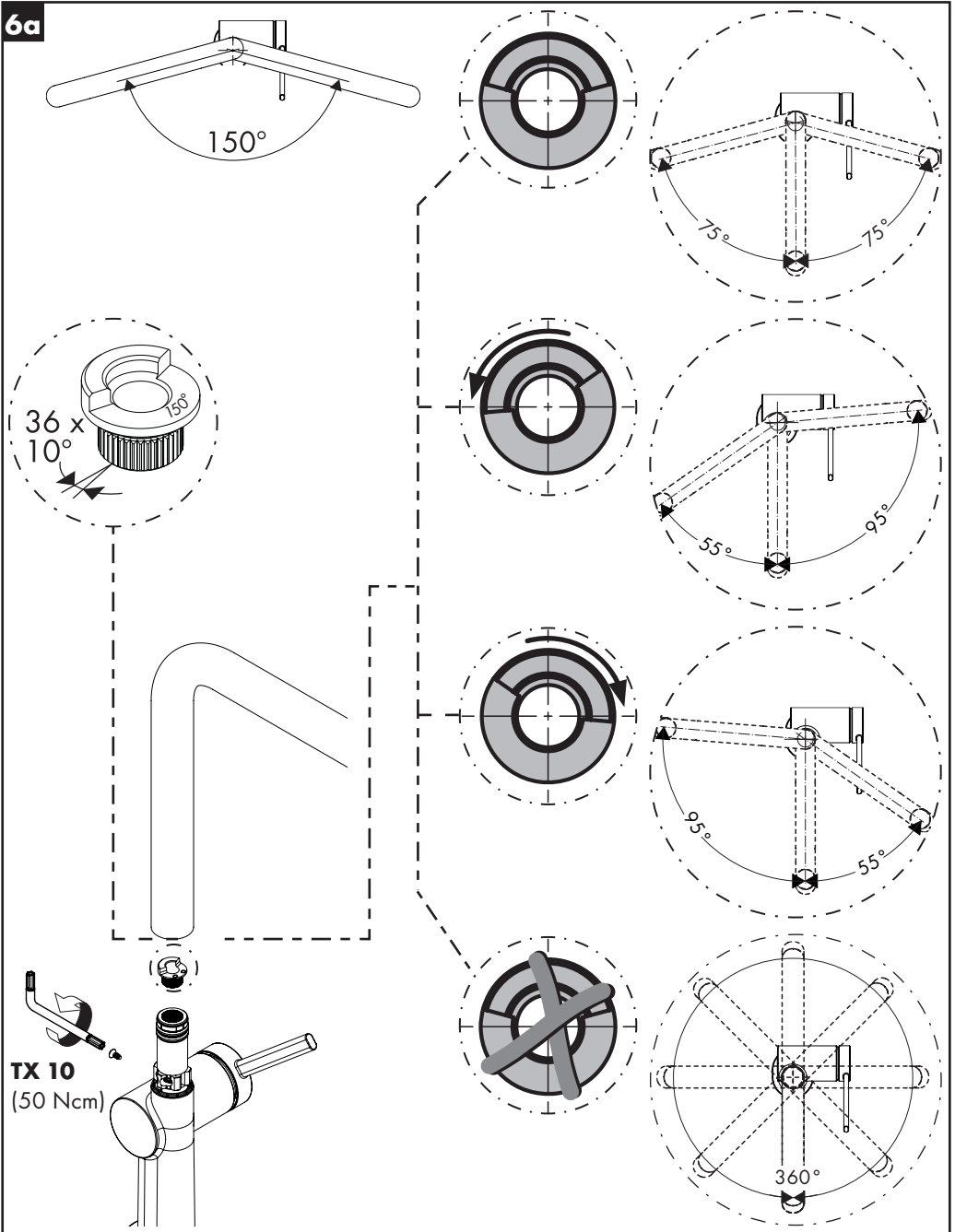
72827XXX





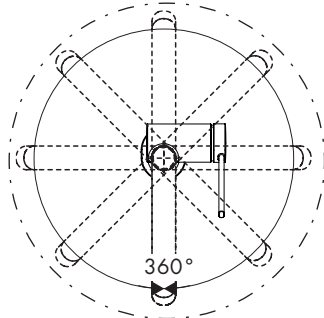
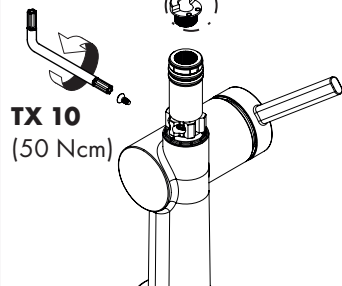
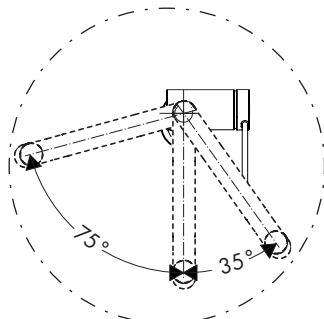
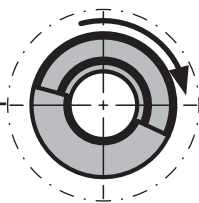
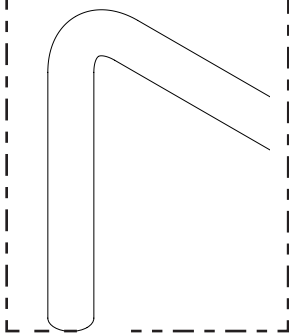
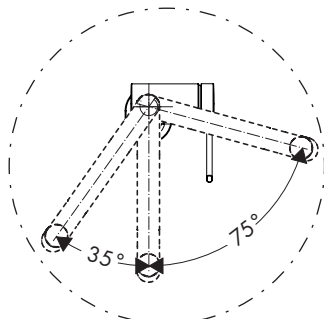
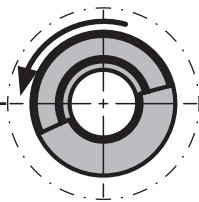
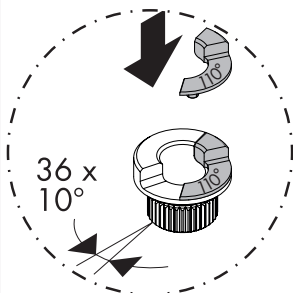
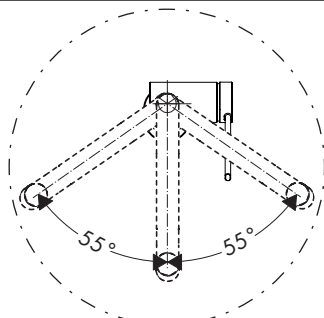
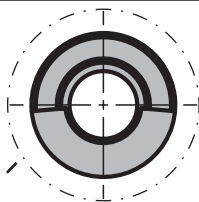
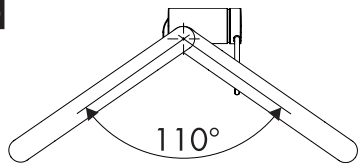


6a



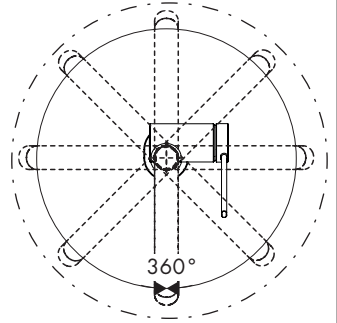
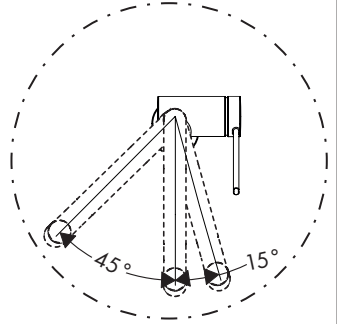
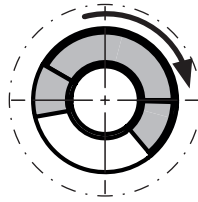
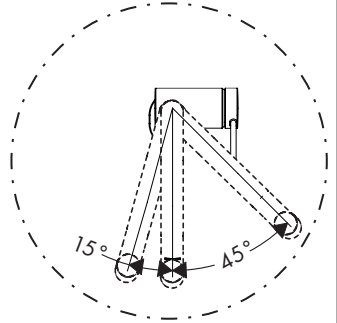
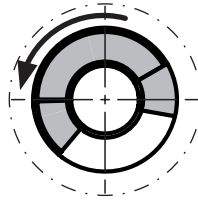
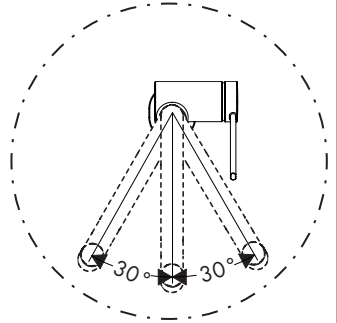
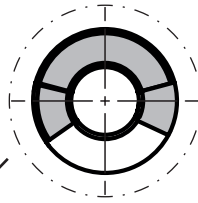
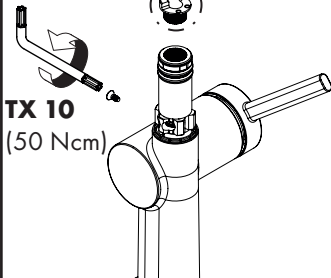
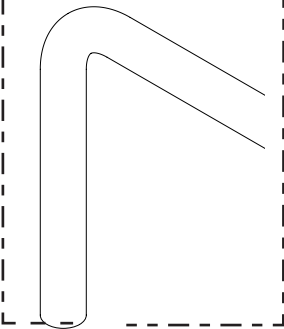
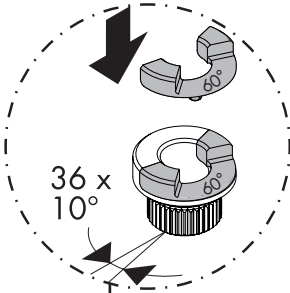
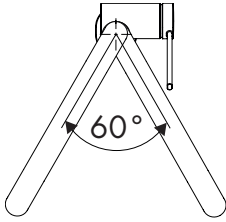


6b





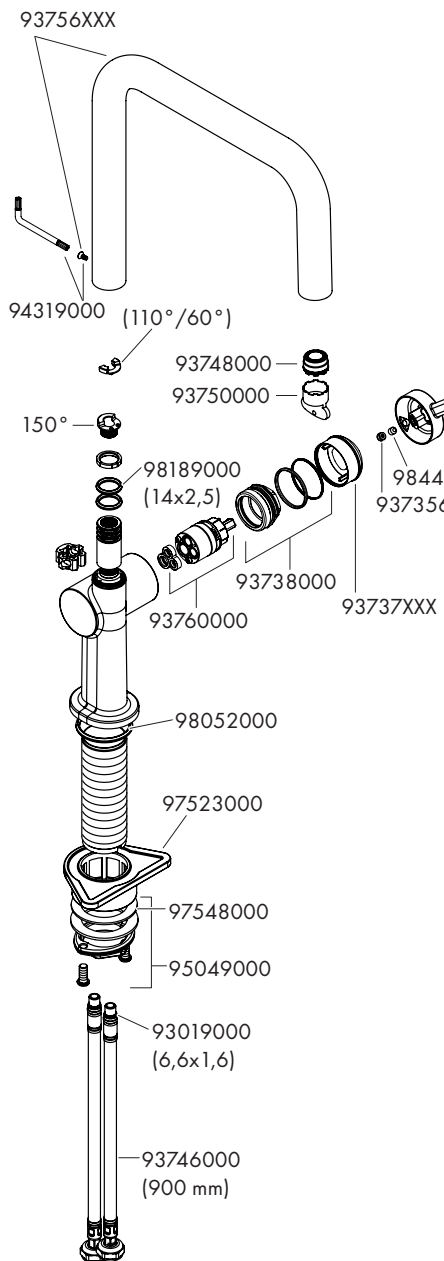
6c





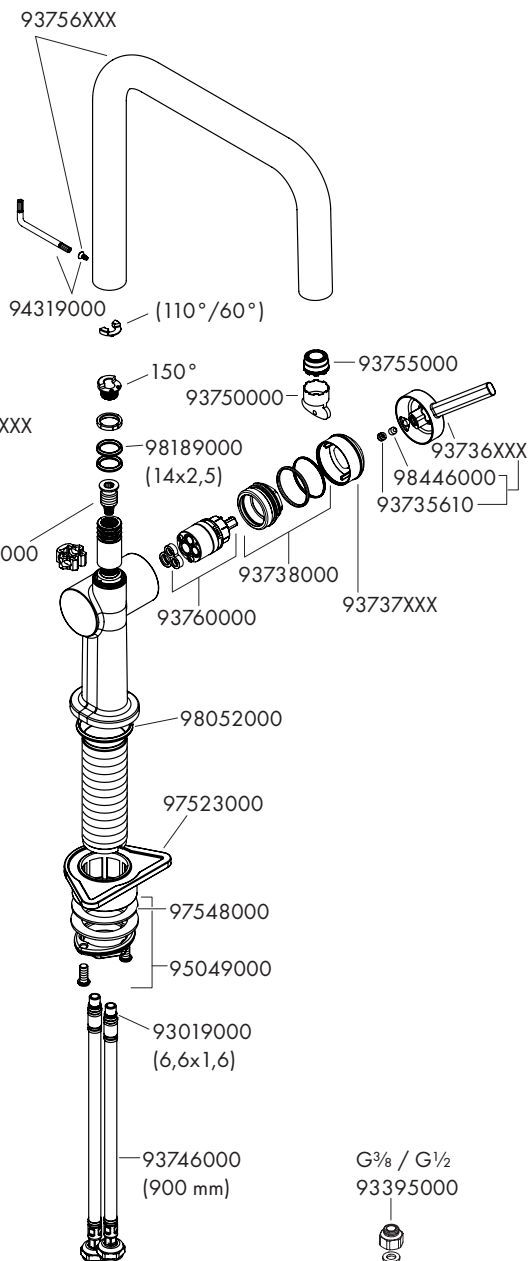
### Talis M54 U 220 1jet

72806XXX



### Talis M54 U 220 Eco 1jet

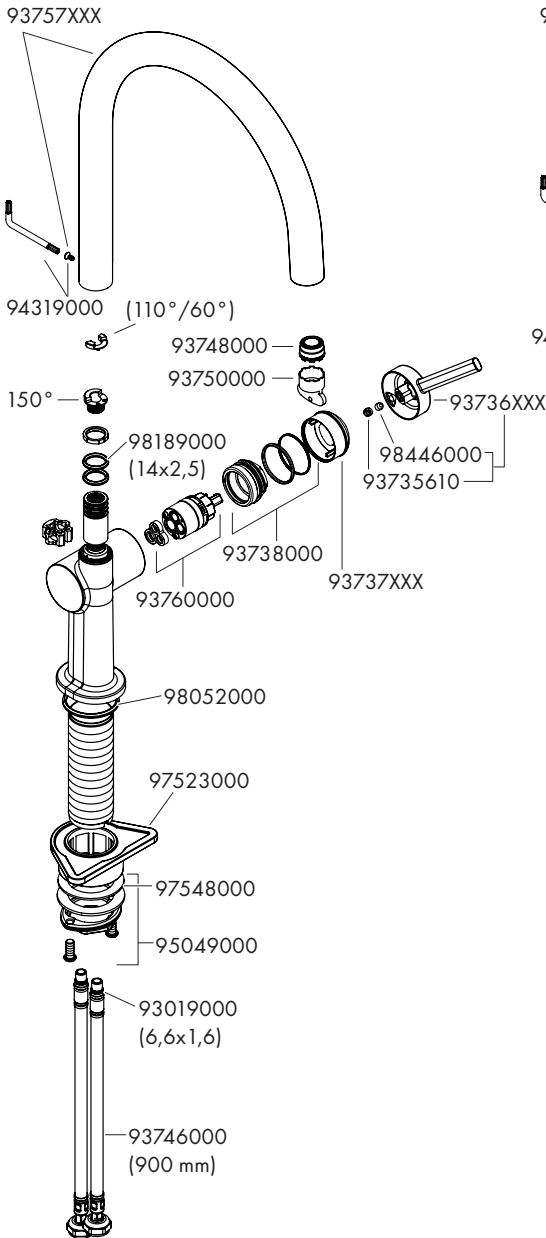
72844XXX





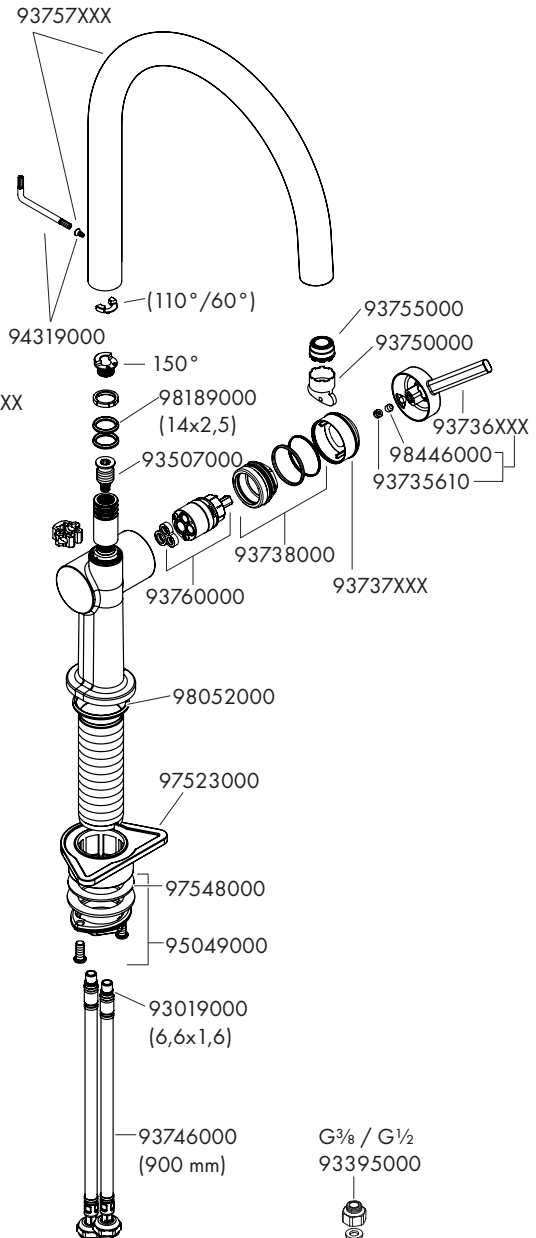
## Talis M54 220 1jet

72804XXX

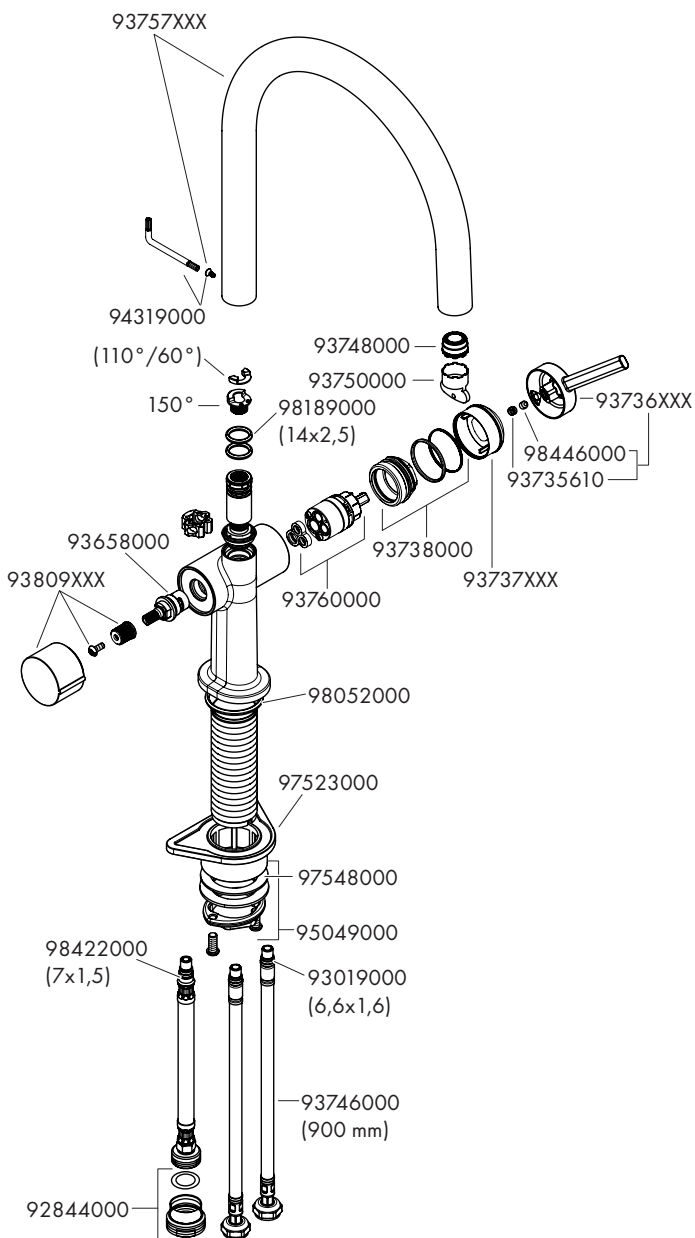


## Talis M54 220 Eco 1jet

72843XXX



**Talis M54 220 1jet**  
72805XXX





**Talis M54 270 1jet**  
72827XXX

