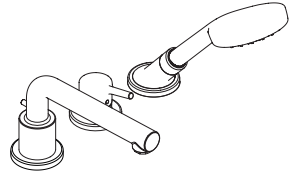
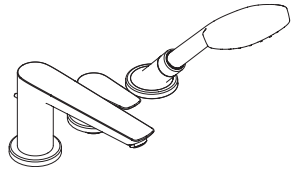


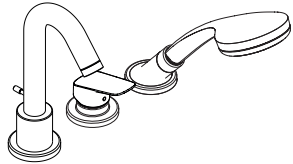
EN Instructions for use / Assembly instructions



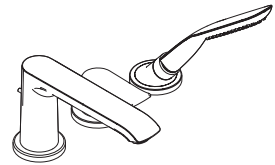
Talis S
72416000



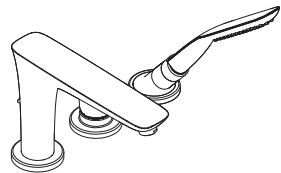
Talis E
71730000 / 71730250 / 71730990



Logis
71310000



Metris
31190000 / 31190990



PuraVida
15432000 / 15432400



Safety Notes

- △ Gloves should be worn during installation to prevent crushing and cutting injuries.
- △ Do not allow the streams of the shower touch sensitive body parts (such as your eyes). An adequate distance must be kept between the shower and you.
- △ The product may not be used as a holding handle. A separate handle must be installed.
- △ The product may only be used for bathing, hygienic and body cleaning purposes.
- △ The hot and cold supplies must be of equal pressures.

Installation Instructions

- Prior to installation, inspect the product for transport damages. After it has been installed, no transport or surface damage will be honoured.
- The pipes and the fixture must be installed, flushed and tested as per the applicable standards.
- The plumbing codes applicable in the respective countries must be observed.

Technical Data

Operating pressure: max. 1 MPa
 Recommended operating pressure: 0,1 - 0,5 MPa
 Test pressure: 1,6 MPa
 (1 MPa = 10 bar = 147 PSI)

Hot water temperature: max. 60°C
 Thermal disinfection: 70°C / 4 min

The product is exclusively designed for drinking water!
 Safety against backflow

Symbol description



Do not use silicone containing acetic acid!



Adjustment (see page 36)

To adjust the hot water limiter. Using a hot water limiter in combination with a continuous flow water heater is not recommended.



Dimensions (see page 37)



Flow diagram (see page 38)

- ① Hand shower
- ② Bath Spout



Spare parts (see page 45)

XXX = Colors
 000 = Chrome Plated
 250 = Brushed Gold-Optic
 400 = White/Chrome Plated
 990 = Polished Gold-Optic



Cleaning (see page 42)



Operation (see page 39)



Maintenance (see page 40)

The check valves must be checked regularly according to EN 806-5 in accordance with national or regional regulations (at least once a year).

Maintenance Secuflex hose

Repeat cleaning when pull out becomes difficult.

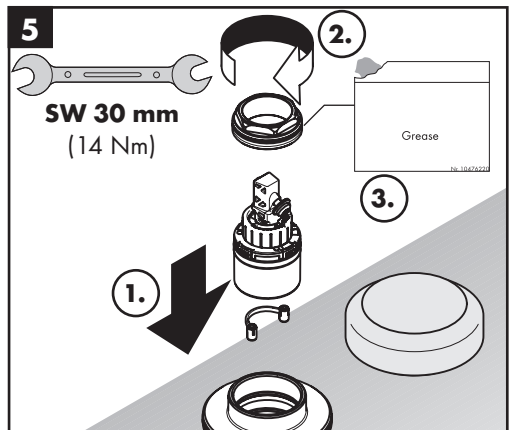
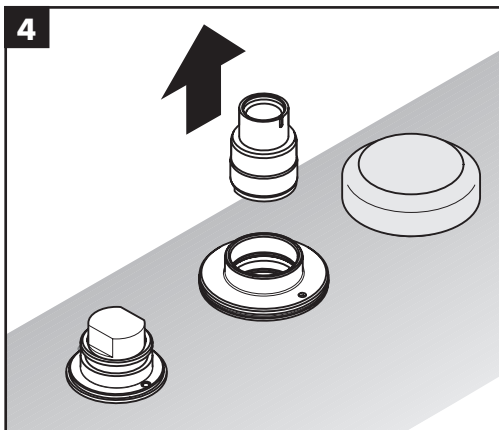
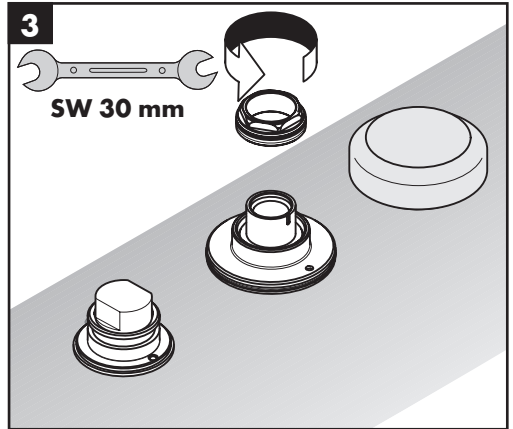
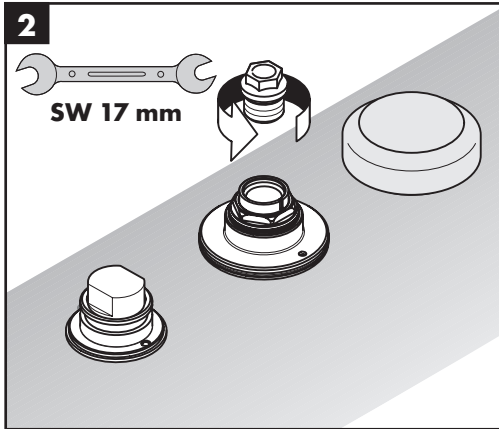
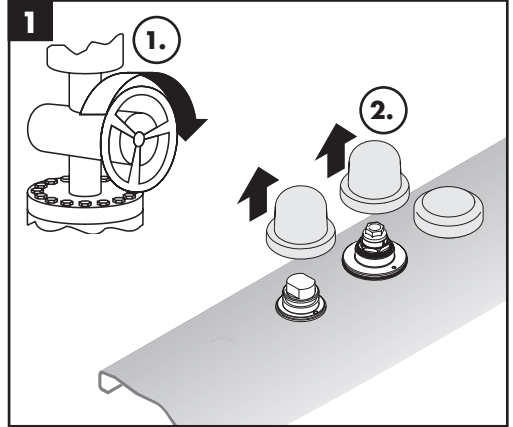
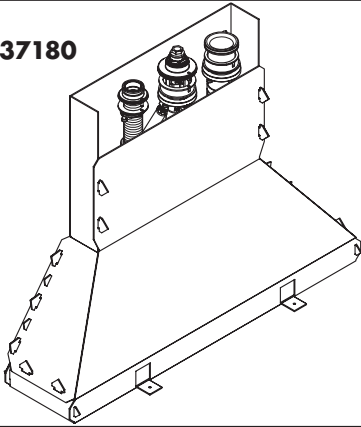


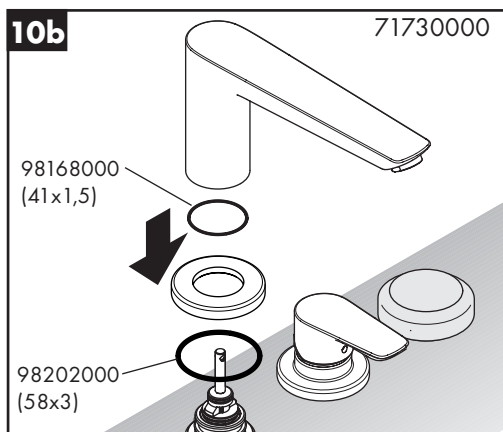
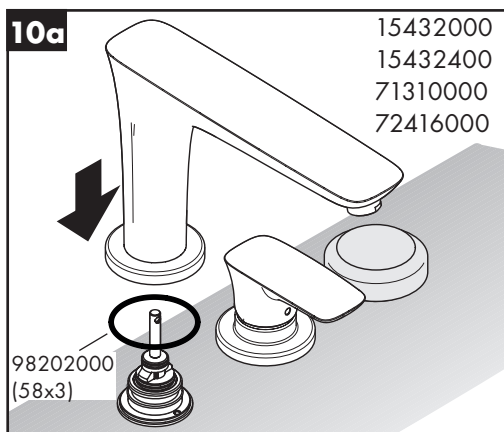
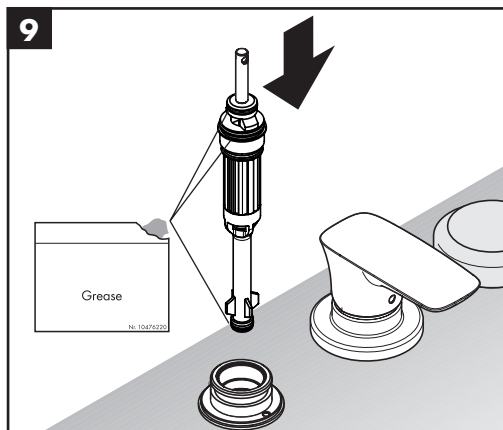
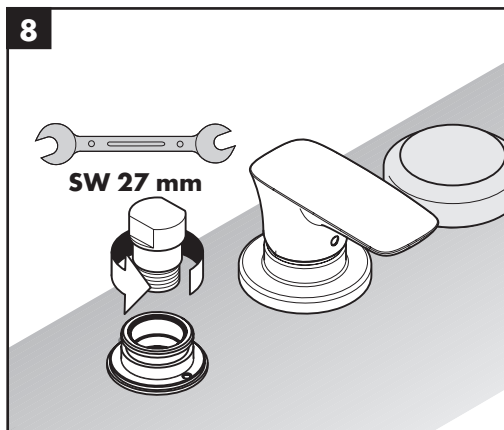
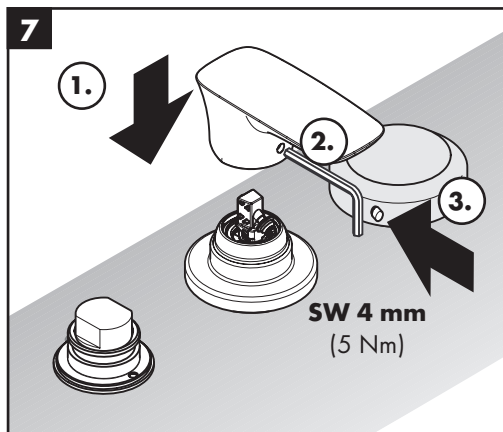
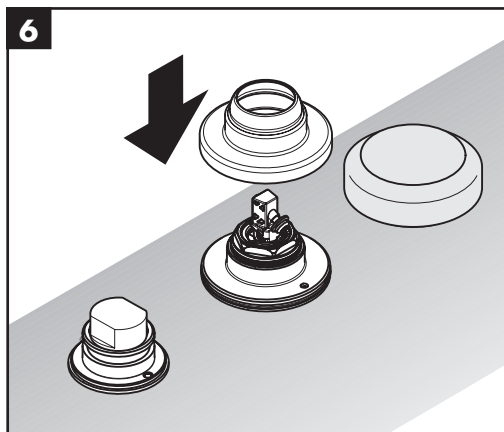
Test certificate (see page 38)

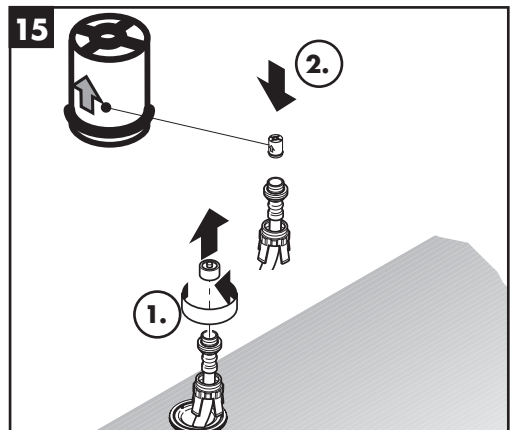
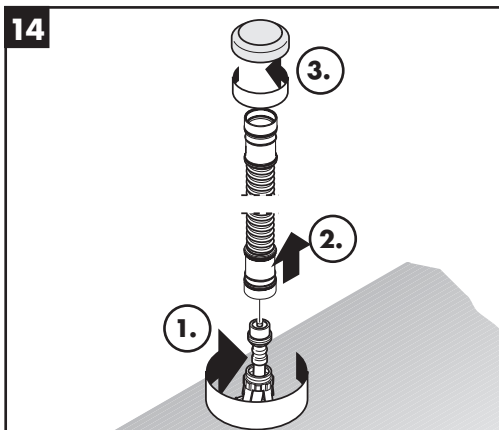
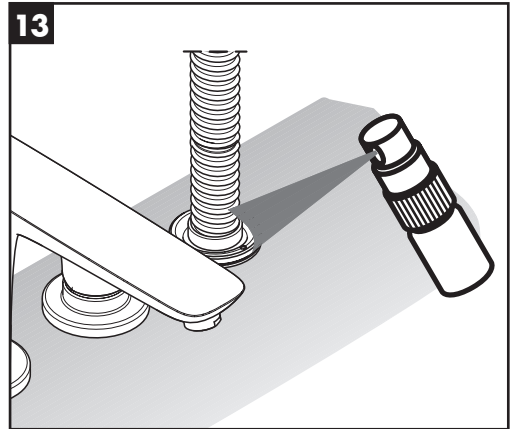
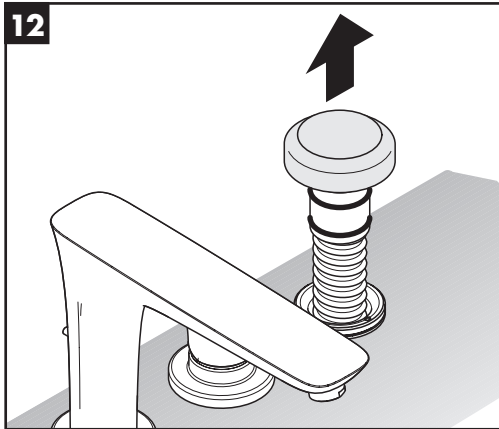
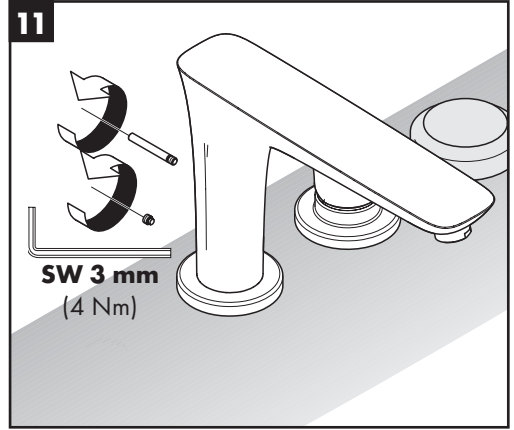
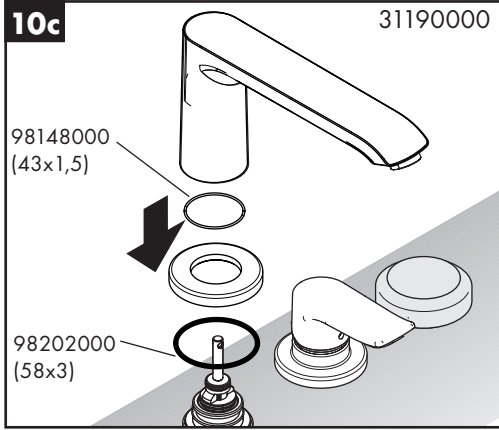


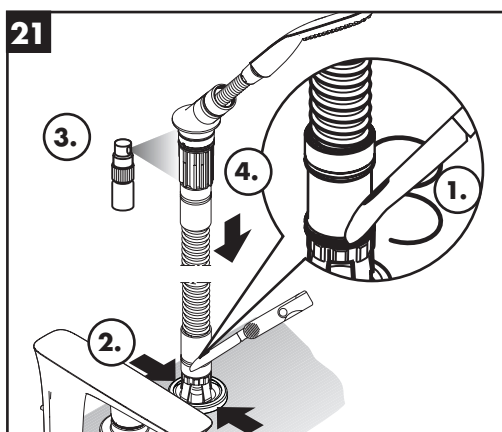
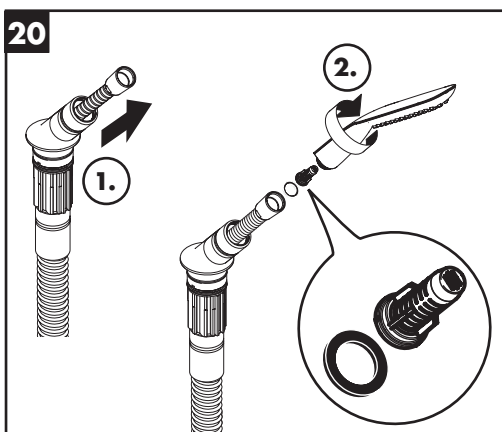
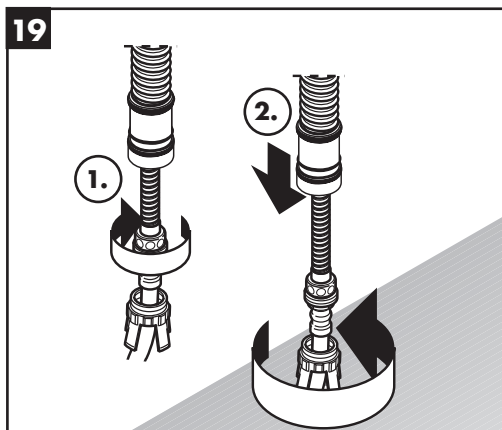
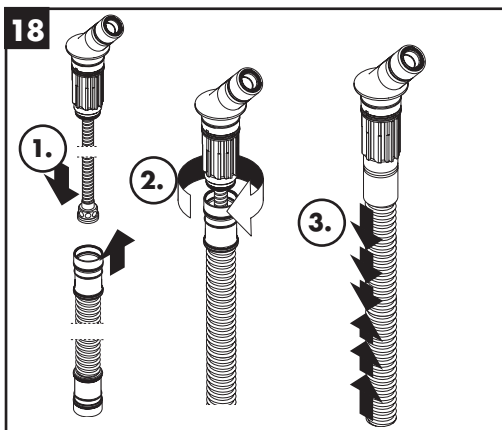
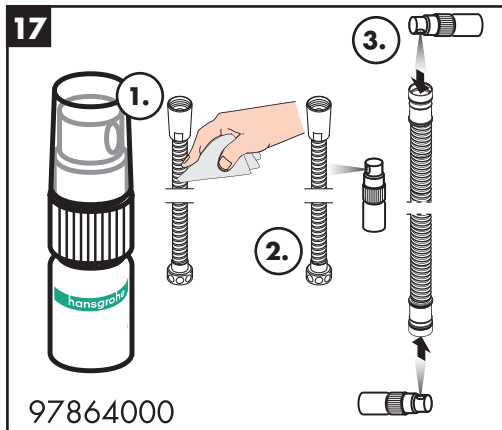
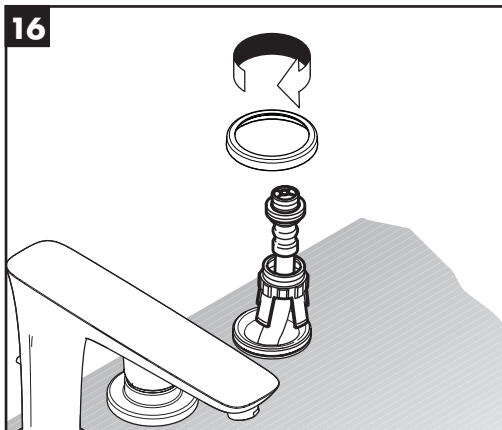


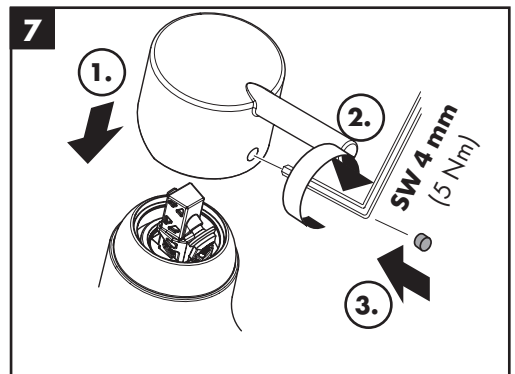
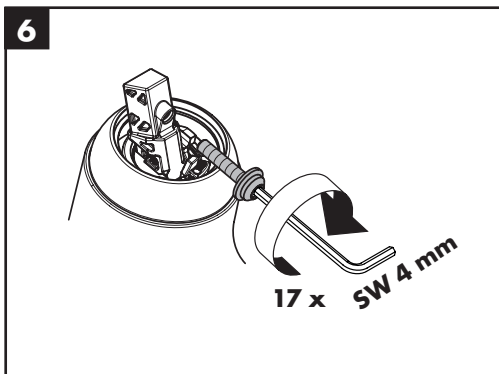
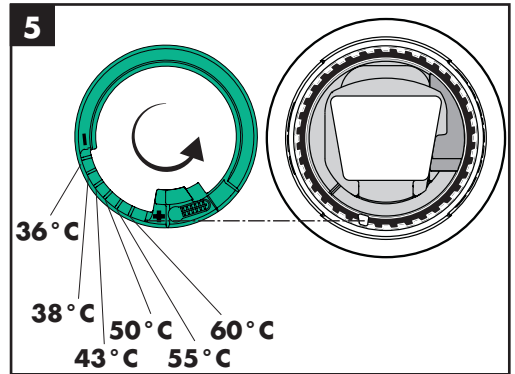
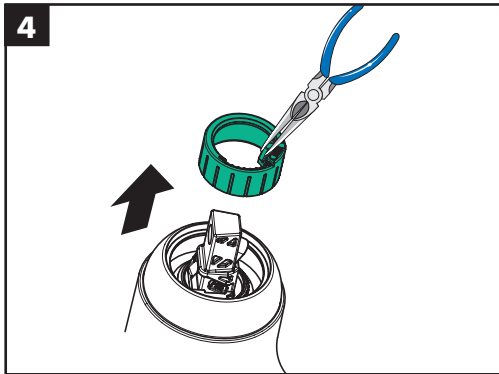
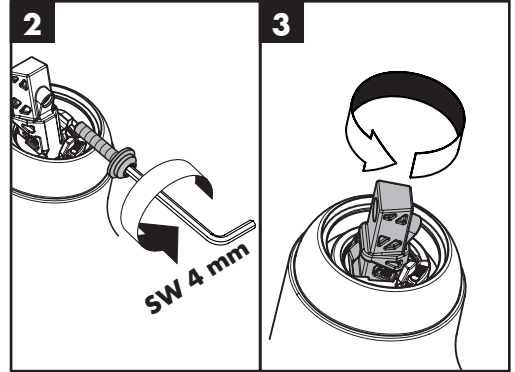
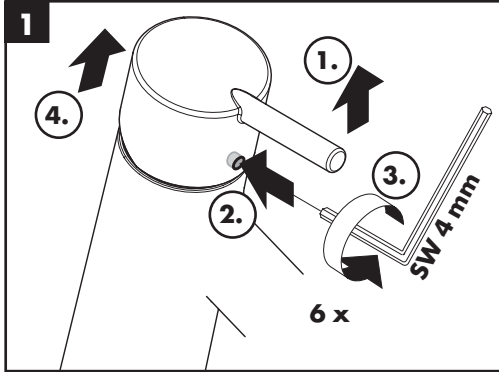
13437180







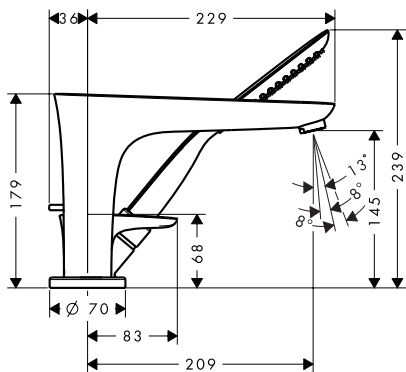






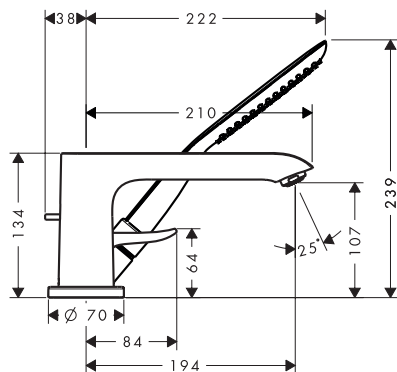
PuraVida

15432000 / 15432400



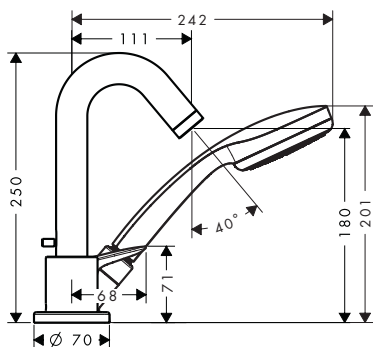
Metris

31190000



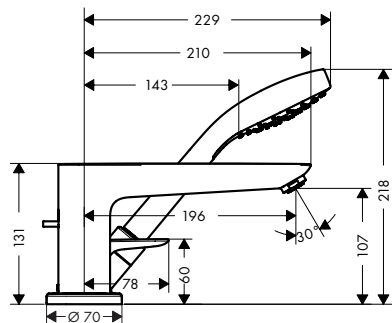
Logis

71310000



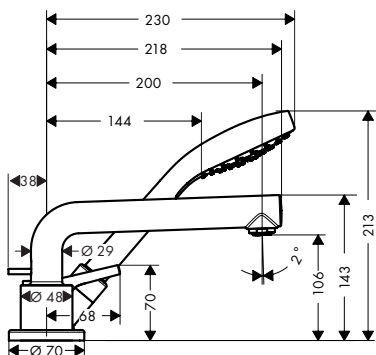
Talis E

71730000 / 71730250 / 71730990



Talis S

7241600

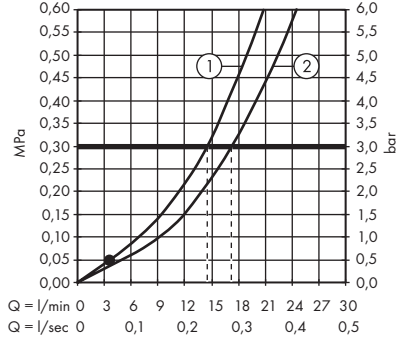
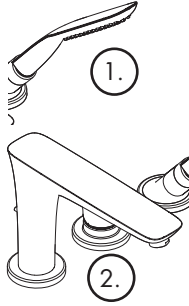
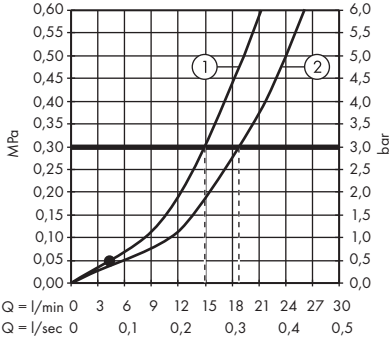




PuraVida 15432000 / 15432400

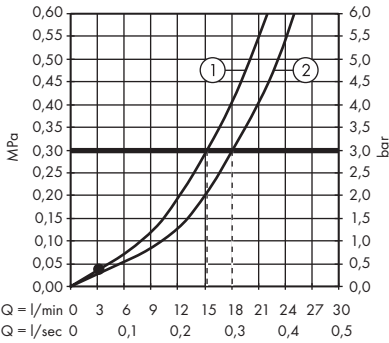
Logis 71310000

Metris 31190000



Talis E 71730000 / 71730250 / 71730990

Talis S 72416000



P-IX

DVGW NF



**GODKENDT
TIL DRILKEVAND**

15432XXX PA-IX 19706/ICB

X

31190XXX PA-IX 19706/ICB

X

71310000

X

71730XXX

X

72416000

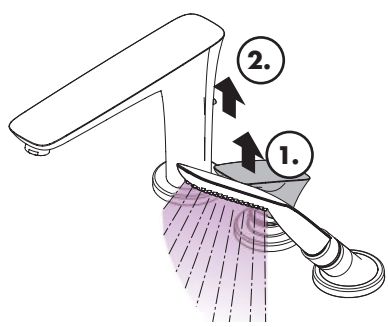
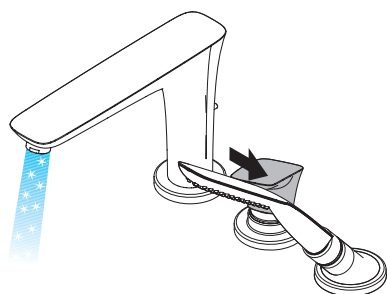
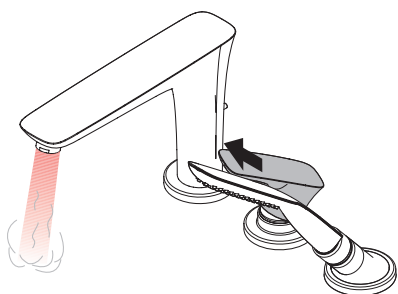
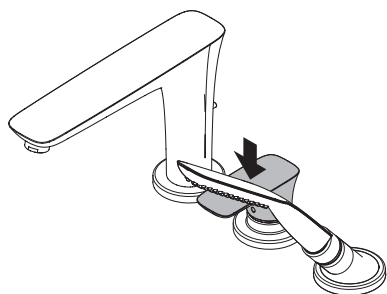
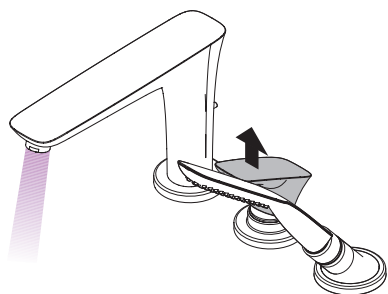
X

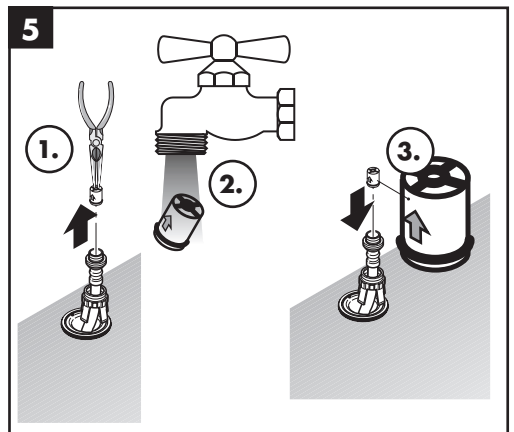
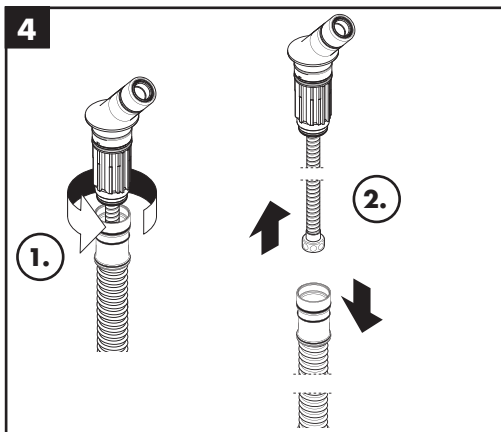
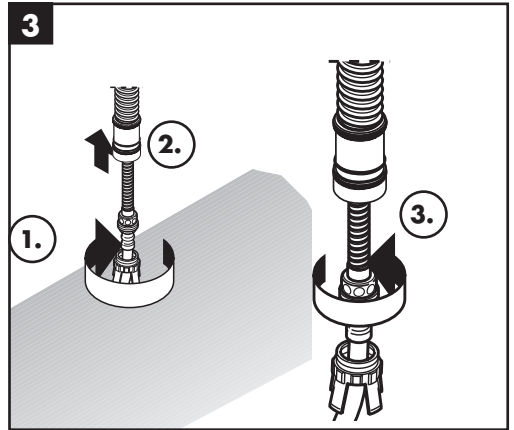
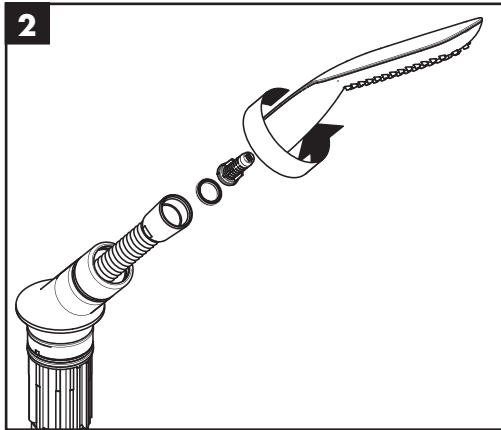
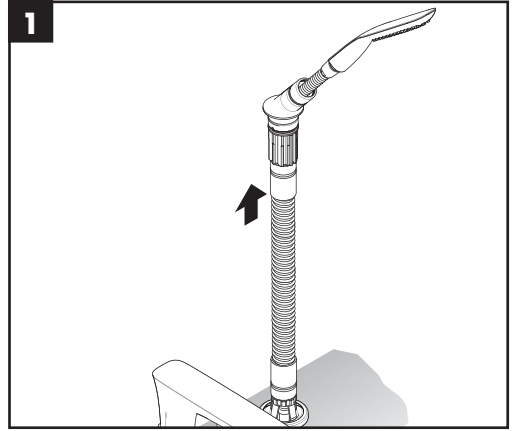
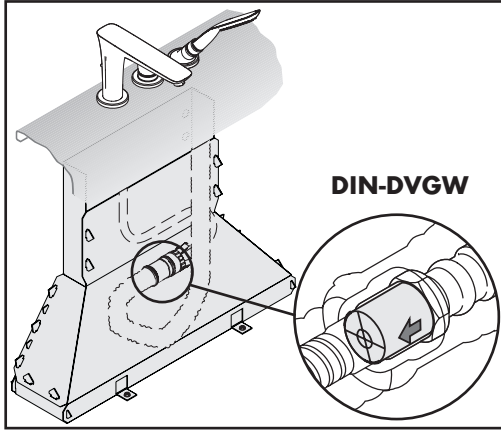
Hansgrohe SE

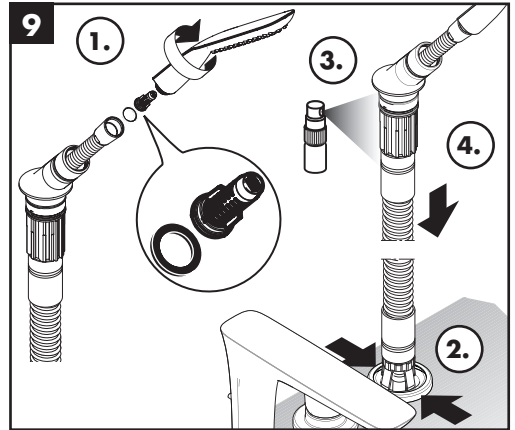
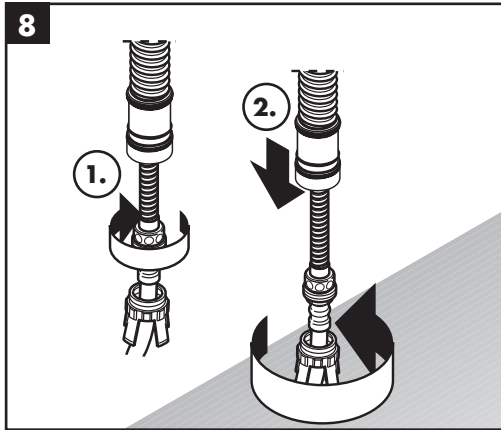
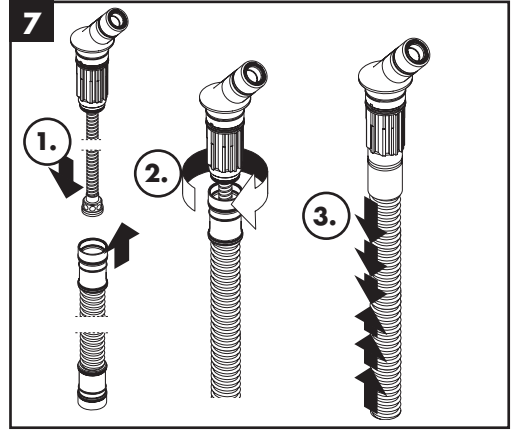
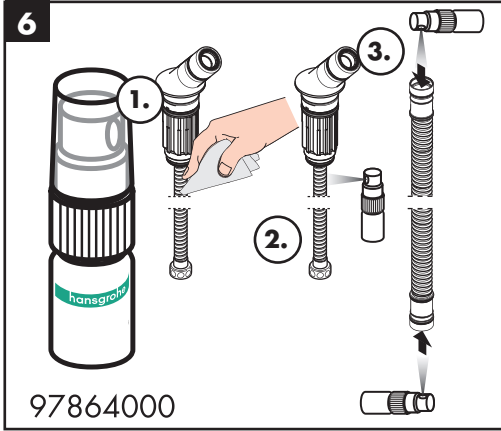
DIN 4109-1

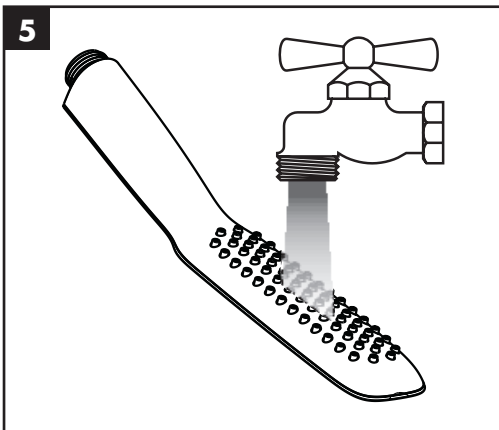
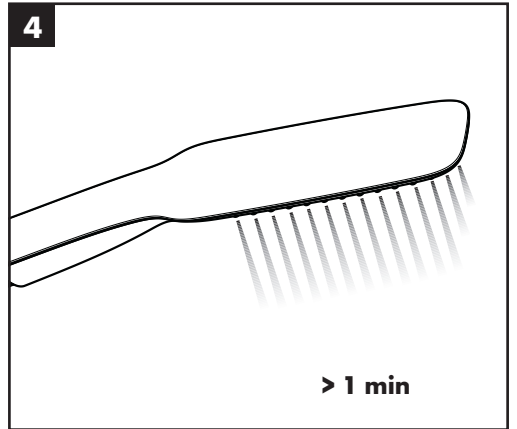
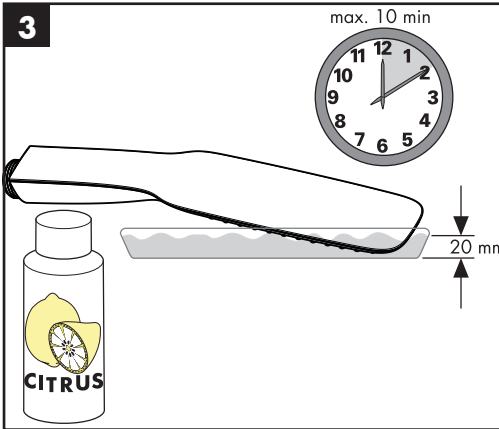
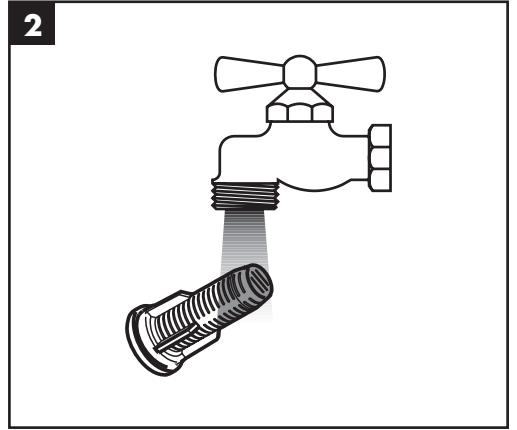
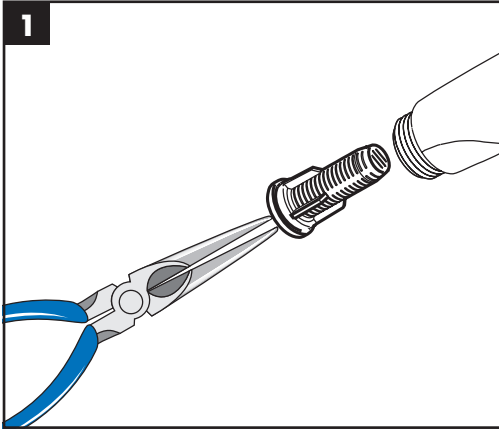
PA-IX 19706/ICB

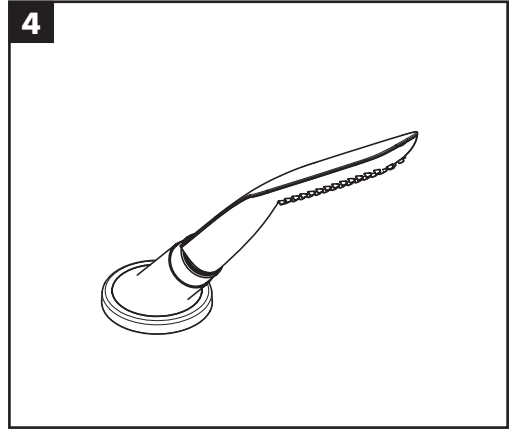
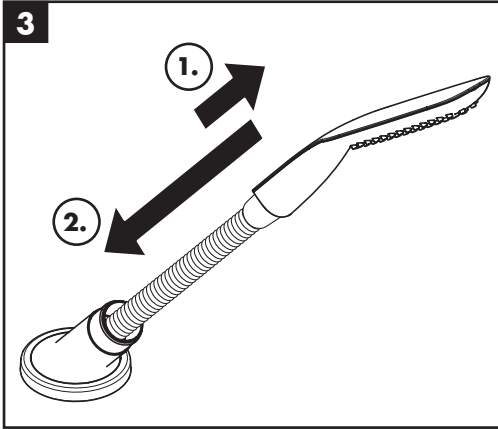
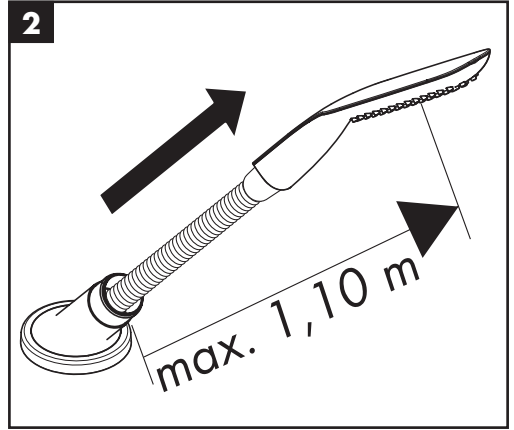
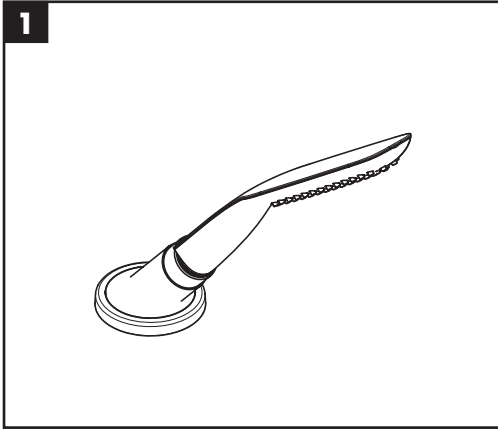








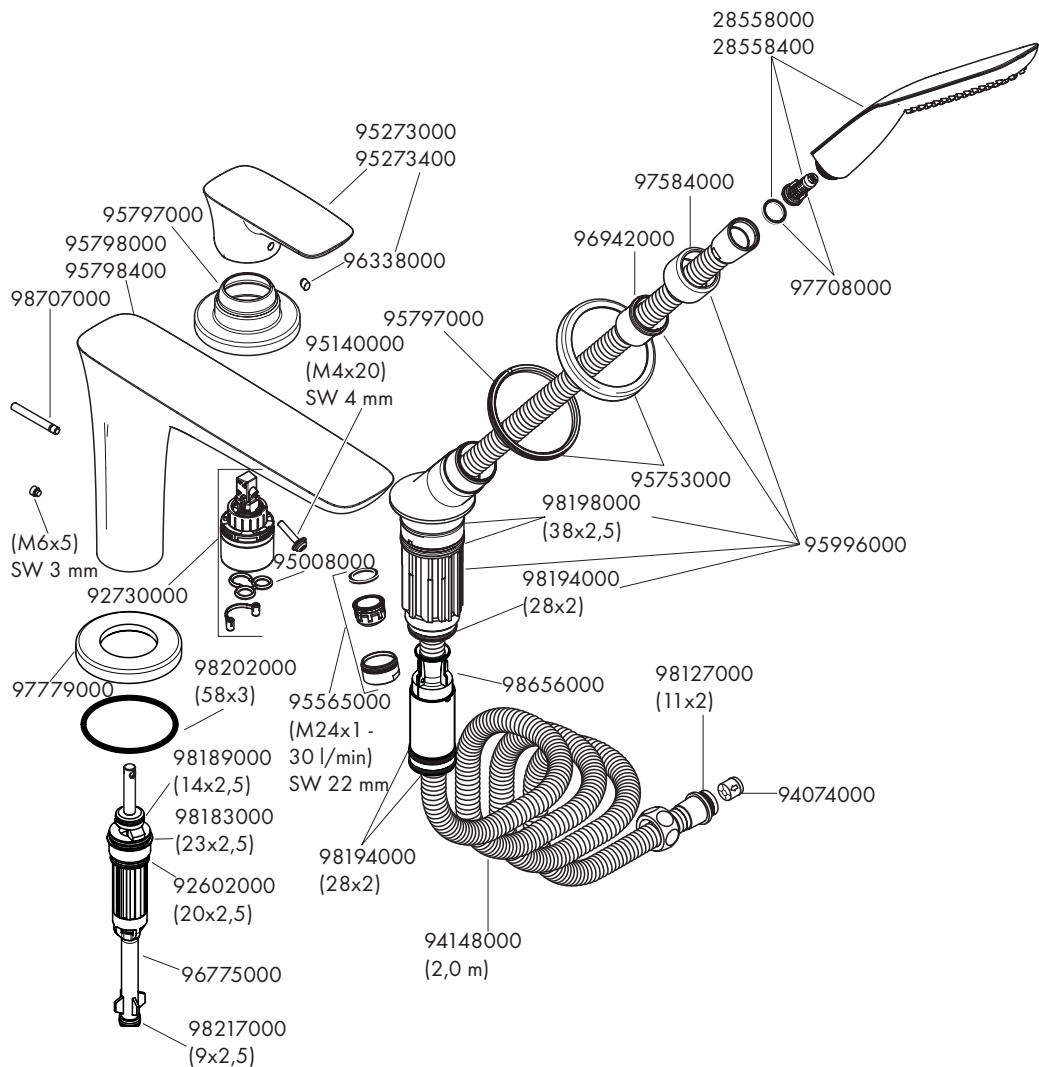






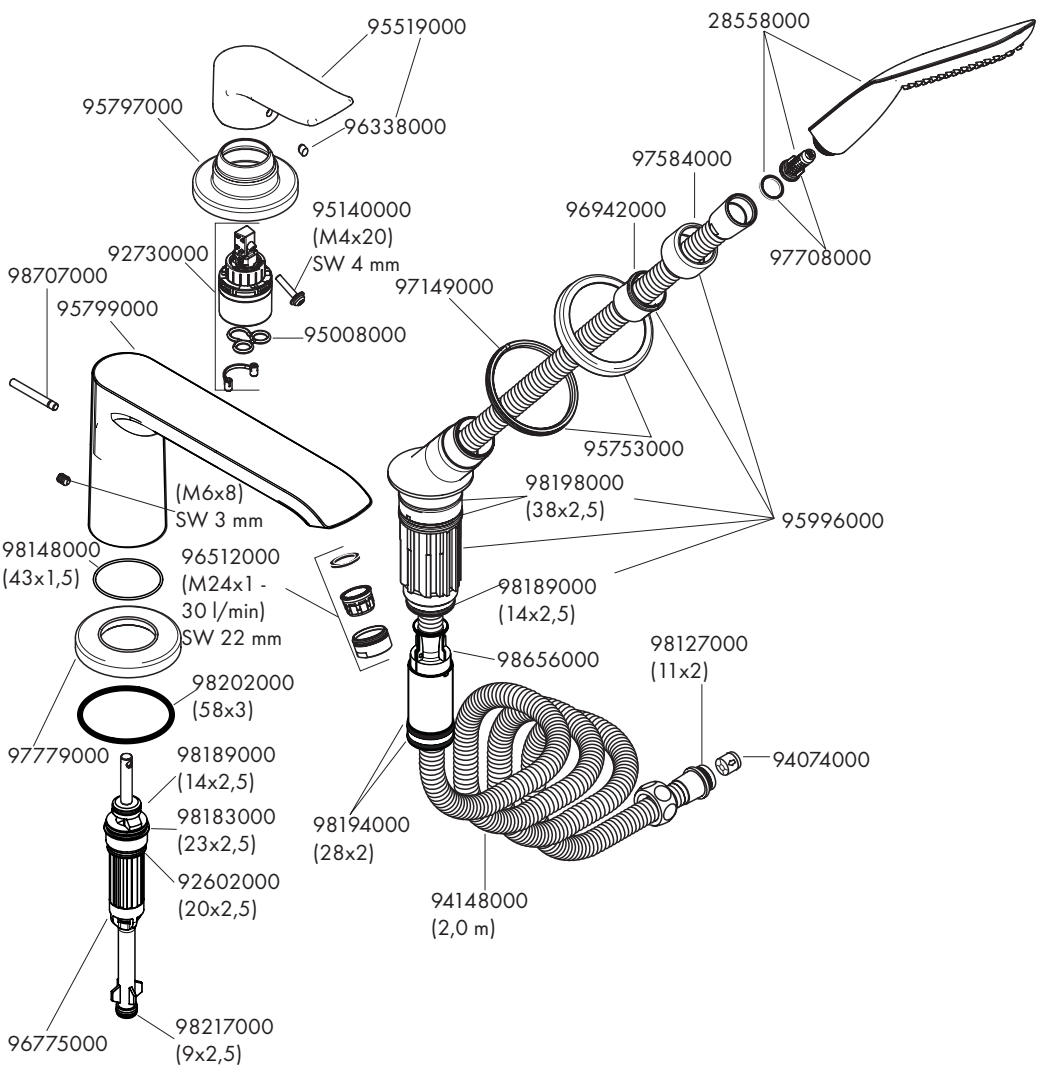
PuraVida

15432000 / 15432400



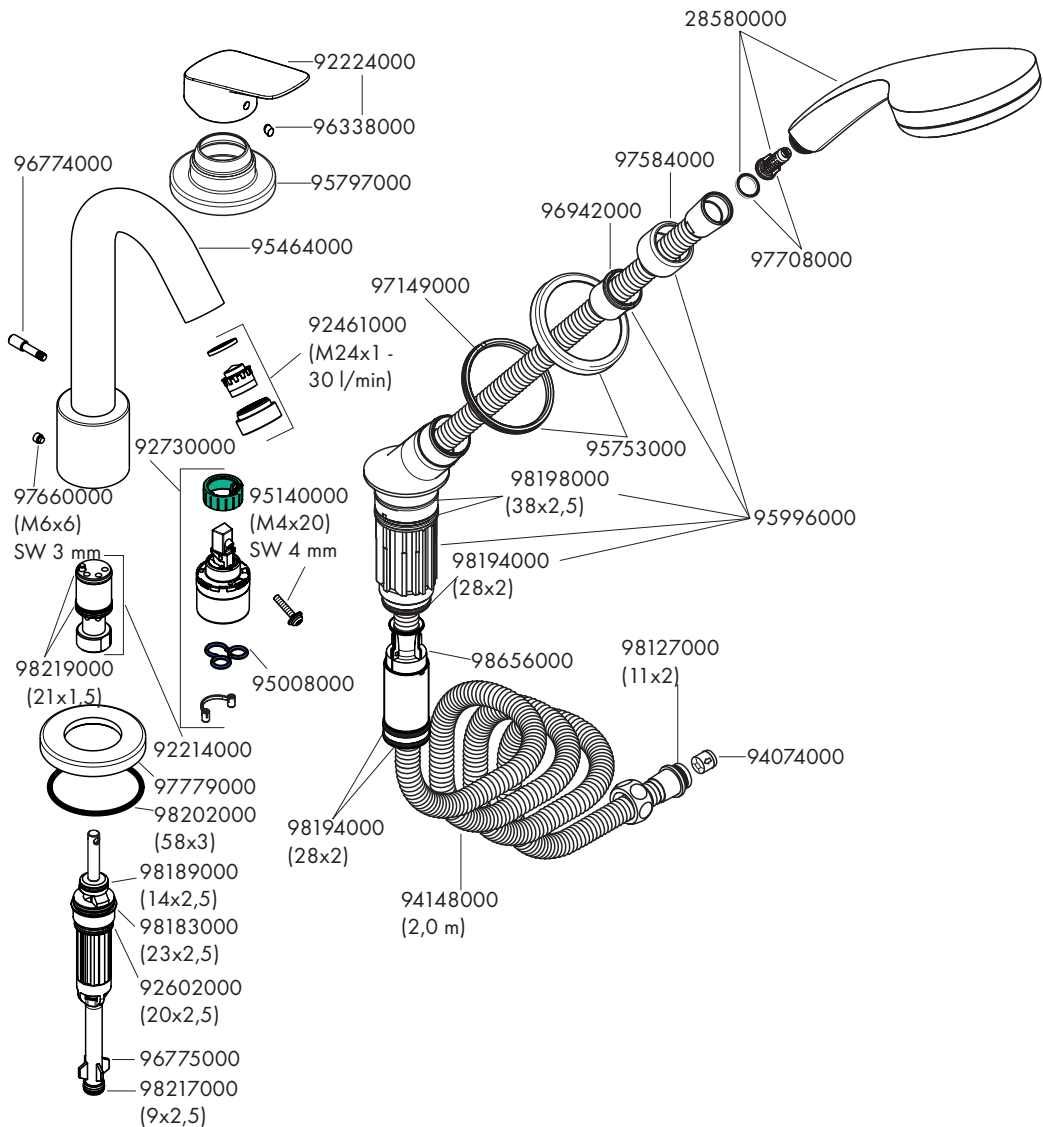


Metris 31190000





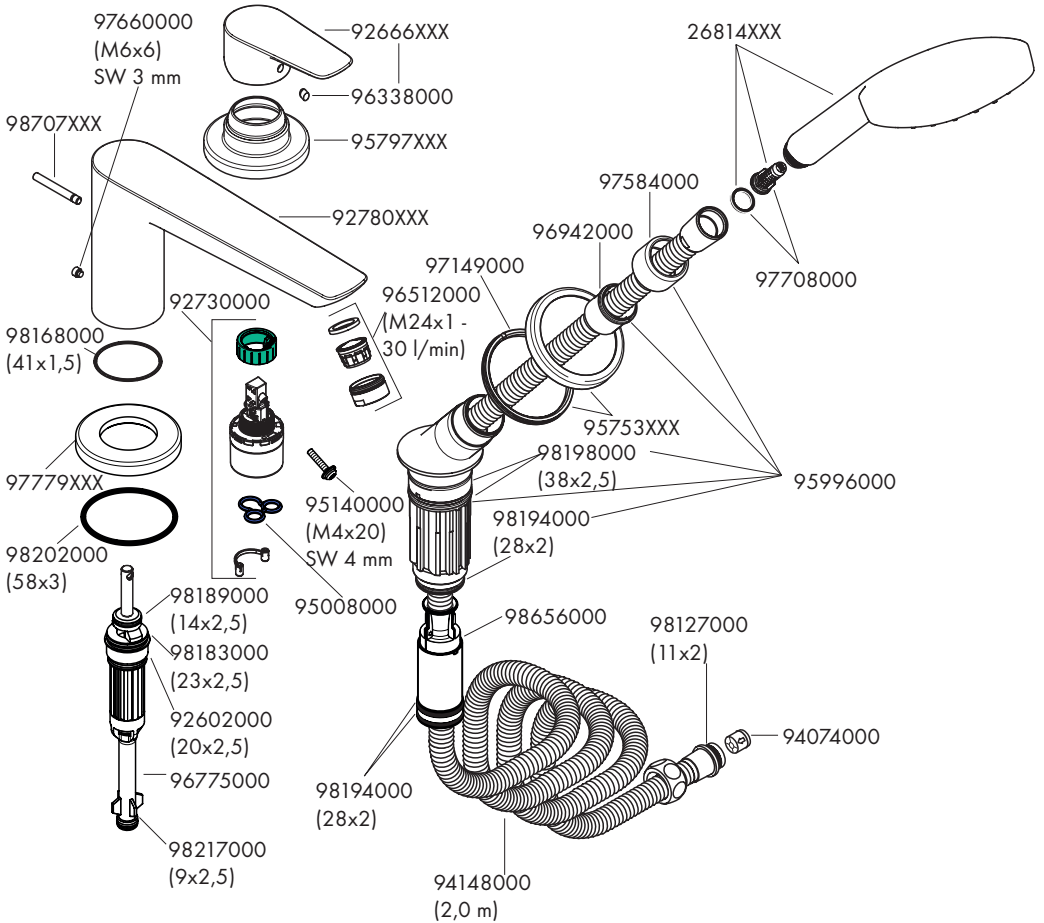
Logis
71310000





Talis E

71730000 / 71730250 / 71730990





Talis S
72416000

