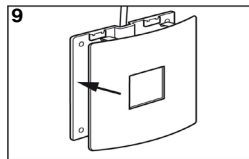
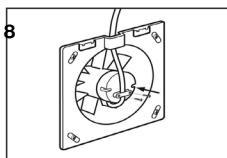
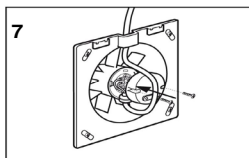
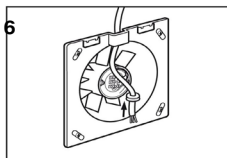
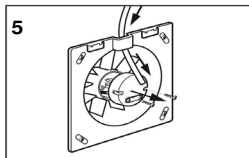
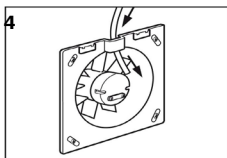
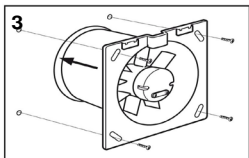
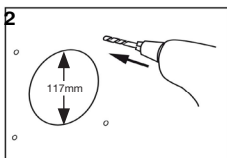
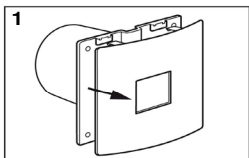


<b>GB</b>	<b>Installation Instructions</b> التركيب تعليمات
<b>HR/BIH</b>	<b>Uputstvo za instalaciju</b>
<b>BG</b>	<b>Инструкции за монтаж</b>
<b>CZ</b>	<b>Pokyny k instalaci</b>
<b>DK</b>	<b>installeringsinstrukser</b>
<b>NL</b>	<b>Installatiehandleiding</b>
<b>F</b>	<b>Directives d'Installation</b>
<b>D/A</b>	<b>Hinweise zur Installation</b>
<b>GR</b>	<b>ΕΛ Οδηγίες Εγκατάστασης</b>
<b>HU</b>	<b>Szerelési utasítások</b>
<b>I</b>	<b>Istruzioni per l'installazione</b>
<b>RO</b>	<b>Instrucțiuni de instalare</b>
<b>RUS</b>	<b>Иструкция по установке</b>
<b>SK</b>	<b>Pokyny na montáž</b>
<b>SLO</b>	<b>Namestitvena navodila</b>
<b>ESP</b>	<b>Instrucciones de Instalación</b>
<b>S</b>	<b>Installationsinstruktioner</b>
<b>TR</b>	<b>Kurulum Talimatları</b>
<b>PL</b>	<b>Instalacja - instrukcja</b>

<b>GB</b>	<b>Installation Diagrams</b> رسم التركيب
<b>HR/BIH</b>	<b>Dijagrami za instalaciju</b>
<b>BG</b>	<b>Схеми за монтиране</b>
<b>CZ</b>	<b>Schéma montáže</b>
<b>DK</b>	<b>installeringsdiagrammer</b>
<b>NL</b>	<b>Installatieschema's</b>
<b>F</b>	<b>Schémas d'Installation</b>
<b>D/A</b>	<b>Installation: Zeichnungen</b>
<b>GR</b>	<b>Διαγράμματα Εγκατάστασης</b>
<b>HU</b>	<b>Szerelési rajzok</b>
<b>I</b>	<b>Schema d'installazione</b>
<b>RO</b>	<b>Diagrame de instalare</b>
<b>RUS</b>	<b>Рисунки по установке</b>
<b>SK</b>	<b>Nákresy montáže</b>
<b>SLO</b>	<b>Diagrami za namestitev</b>
<b>ESP</b>	<b>Diagramas de instalación</b>
<b>S</b>	<b>Installationsschema</b>
<b>TR</b>	<b>Kurulum Şeması</b>
<b>PL</b>	<b>Schemat instalacji</b>



**READ ALL INSTRUCTIONS BEFORE COMMENCING INSTALLATIONS**

- Warning: The appliance is not intended for use by young children or infirm persons unless they have been adequately supervised by a responsible person to ensure that they can use the appliance safely. Young children should be supervised to ensure that they do not play with the appliance.
- Observe appropriate safety precautions if working on steps or ladders. Wear eye protection when breaking out wall materials etc.
- The fan should not be sited where it would be subject to direct source of heat in excess of 40C.
- When installing wall mounted fans, ensure that there are no buried cables or pipes in the way. It is recommended that this fan is mounted 1.8m above floor level.

**Fan installation instructions**

1. Remove front cover.
2. Drill fixing holes in wall.
3. Using No.8 screws, secure fan body to wall.
4. Pass cable through hole in top of fan collar.
5. Remove inner cover.
6. Pass wire through rubber grommet and wire fan accordingly (see Wiring Diagrams). For timer adjustment see Timer Adjustment section).
7. Replace inner cover.
8. Ensure cable passes through cable clamp and round through into hole.
9. Replace fan front cover.

**Wiring Details**

- The electrical connections must be carried out by a qualified electrician in accordance with IEE or local regulations.
- WARNING: Isolate electricity supply before starting work.
- The fans must be connected to a double pole isolating switch having contact separation of at least 3 mm.
- When supplied from a 5 amp lighting circuit no local fuse is required.

**Fan Specifications**

Voltage: 220V/240V~50 Hz.

Cable Sizes:

3 core 0.75/1.0mm<sup>2</sup>**Timer Adjustment**

WARNING: Isolate electricity supply before removing PCB cover.

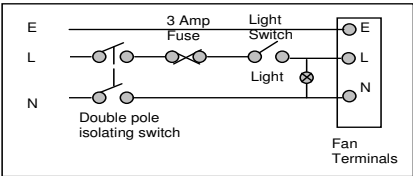
- The timer is pre-set (approximately 20 minutes) but may be adjusted by using a screwdriver and rotating clockwise to reduce time and anticlockwise to increase time overrun.

**To clean and service your fan**

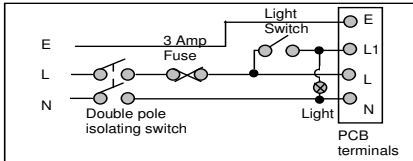
WARNING: Always isolate fan from mains supply before cleaning. Do not use solvents to clean this fan.

- Remove front fan cover.
- The fan may now be cleaned using a brush or damp cloth.
- DO NOT IMMERSE IN WATER.
- After cleaning replace front fan cover.

Wiring Diagram



**BASIC**



**TIMER**

**Greenwood Air Management Ltd**  
Greenwood House, Brookside Avenue,  
Rustington, West Sussex, BN16 3LF, UK.  
Tel: +44 1903 771021 Fax: +44 1903 782398  
Web: [www.greenwood.co.uk](http://www.greenwood.co.uk)  
Email: [info@greenwood.co.uk](mailto:info@greenwood.co.uk)

# Check out our full range of Bathroom Accessories

Bathroom Accessory Sets

Heated Towel Rails

Bathroom Extractor Fans

Bathroom Lighting

Shower Seats

Grab Rails

Shower Curtains

Toilet Brushes

Bathroom Cleaning Products

## Wall Mounted Bathroom Accessories

Robe Hooks

Bathroom Tumblers

Toilet Roll Holders

Soap Dishes

Towel Rings

Shower Caddies

## Bathroom Mirrors

Standard Bathroom Mirrors

LED Bathroom Mirrors

Shaving Mirrors

**plumbworld**  
**Big brands, small prices.**