

Infrared premium rimless luxury wall hung Doc M toilet pack



Product details

| | |
|--------------------------------|-------------------------|
| Warranty: | See individual products |
| Max load: | See individual products |
| Doc M compliant: | Yes |
| Suitable for wet areas: | Yes |

Features

- Premium rimless design
- Hygienic touch-free operation
- Complies with Part M of the Building Regulations
- Tap, flush valve and inlet valve Reg 4 Certified (WRAS, NSF, Kiwa, etc.)
- Concealed fixing stainless steel grab rails and hinged rail
- Simple one box solution

Finish options

Mechanical



SS
Satin Stainless Steel



SP
Polished Stainless Steel

Powder Coated



MB
Matt Black (RAL 9005)

Product description

Product code

Infrared premium rimless luxury wall hung Doc M toilet pack, left handed

NY03-DM-43111-******

Infrared premium rimless luxury wall hung Doc M toilet pack, right handed

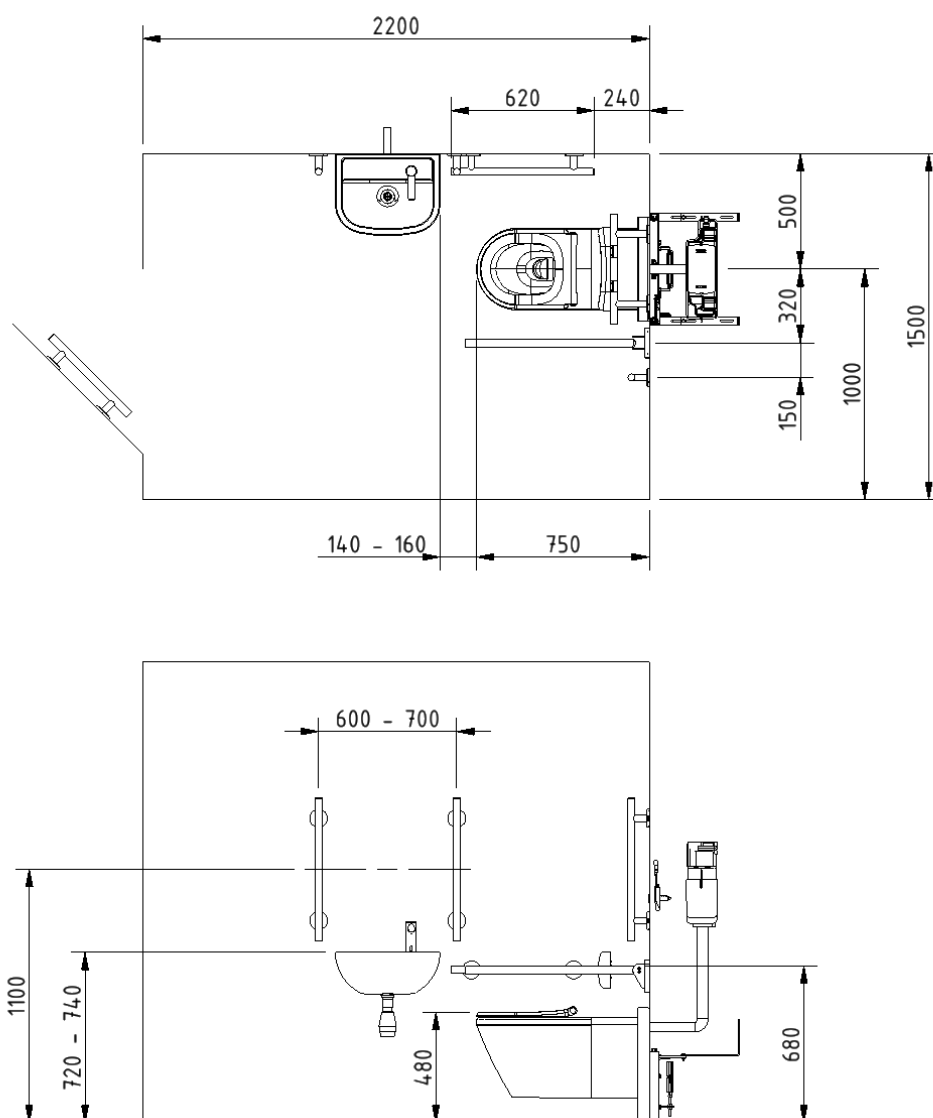
NY03-DM-43112-******

Replace ****** with 2-character short code for chosen finish (Mechanical / Powder Coated).
e.g., NY03-DM-43111-SS

Pack contents

- 4 x 600mm stainless steel luxury grab rails with concealed fixings
- 1 x 450mm stainless steel luxury grab rail with concealed fixings
- 1 x 800mm stainless steel contemporary hinged support rail with concealed fixings
- 1 x 220mm stainless steel luxury back rest rail and pad with concealed fixings
- 1 x Wall hung premium rimless Doc M pan
- 1 x Floor mounting frame for wall hung pan
- 1 x Infrared concealed cistern with fittings, flush pipe, and mains powered sensor
- 1 x Ring only toilet seat with soft close hinge
- 1 x Left or right handed 1 tap hole basin
- 1 x Contemporary mains powered infrared tap
- 1 x TMV3 Valve
- 1 x Basin waste

Dimensions (mm)



Note: Spacing box between pan and wall is not provided by Fitzroy of London, this is required to achieve the 750mm pan projection.

Recommended to install wall hung frame up to the inside of the built out wall.

Premium rimless wall hung Doc M pan



Product details

| | |
|--------------------------------|---------|
| Warranty: | 5 years |
| Max load: | N/A |
| Doc M compliant: | Yes |
| Suitable for wet areas: | Yes |

Features

- Rimless design for ease of cleaning
- Extended projection to aid compliance with Part M of the Building Regulations
- UKCA and CE compliant

For 750mm projection, wall should be built out by 50mm

Finish options



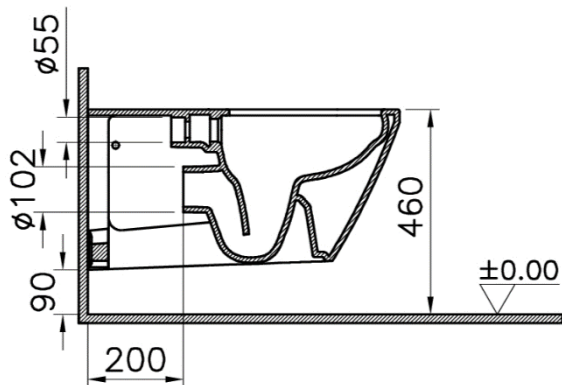
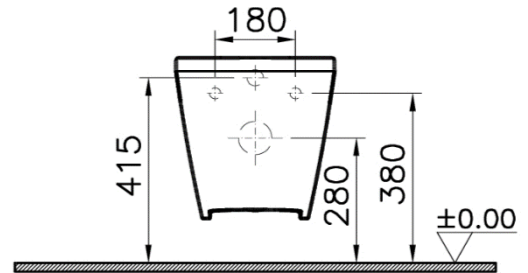
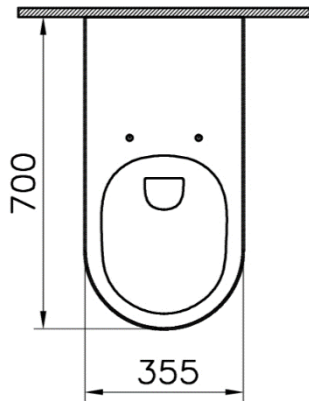
Product description

Premium rimless wall hung Doc M pan

Product code

NY03-SW-43000-WH

Dimensions (mm)



Low frame unit for wall hung pan



Product details

Warranty: 5 years

Max load: 400 kg

Doc M compliant: Yes

Suitable for wet areas: Yes

Features

- Comes with flush pipe and WC pan connector clamps
- Adjustable legs for WC pan height fixing flexibility
- Wall and floor fixing brackets can be fixed through 180 degrees and 360 degrees to simplify installation
- Strong steel square hollow construction
- Load tested to 4kN for compliance with BS EN 997

Finish options

- As standard:**
- Blue powder coated
 - Zinc plated wall and floor brackets

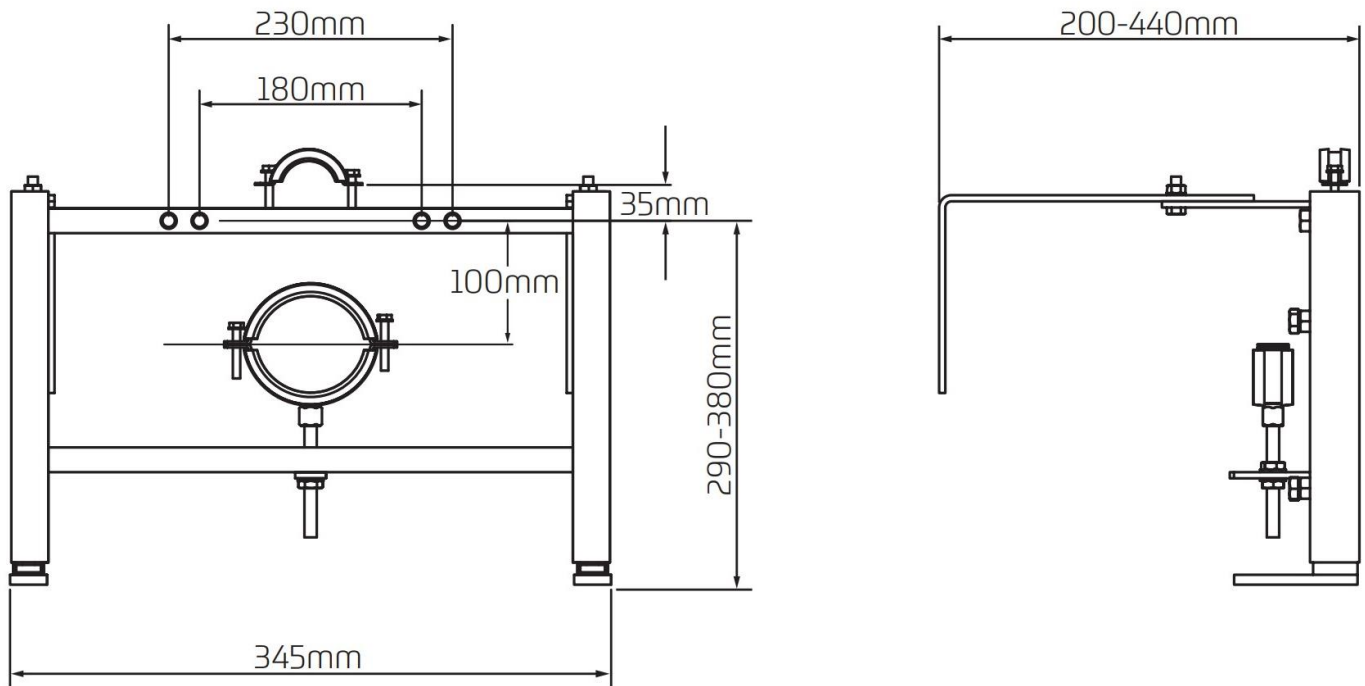
Product description

Low frame unit for wall hung pan

Product code

B-WALLHUNGFRAME

Dimensions (mm)



*For distances between 160-200mm the brackets will need to be reduced in length by cutting.

Soft close ring only toilet seat



Product details

Warranty: 5 years

Max load: N/A

Doc M compliant: Yes

Suitable for wet areas: Yes

Features

- Complies with Part M of the Building Regulations
- Fits premium rimless wall hung pan
- Soft close hinge

Finish options



WH
White (RAL 9016)

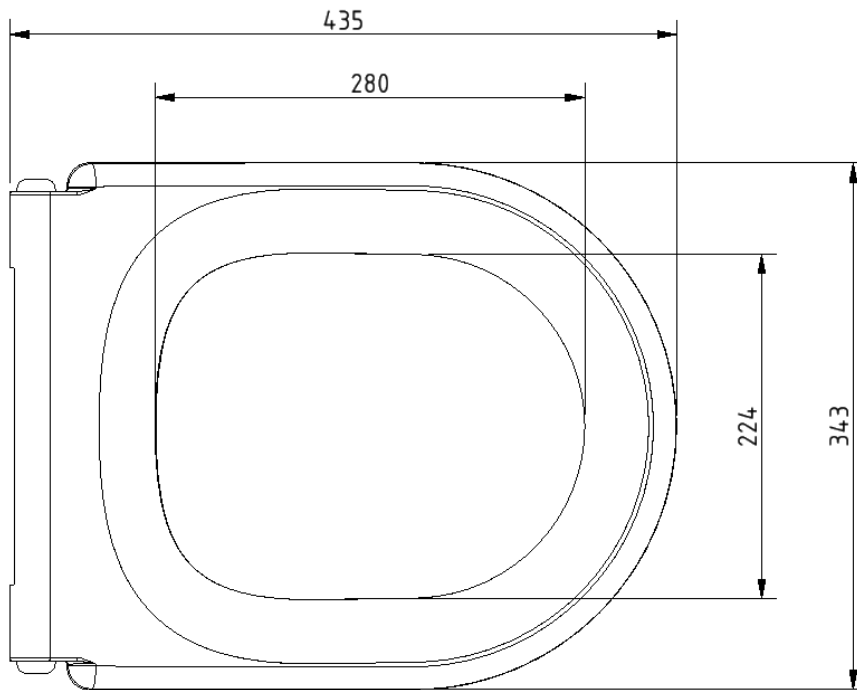
Product description

Toilet seat, ring only, soft close, with hinge, white (RAL 9016)

Product code

NY03-SEAT01-WH

Dimensions (mm)



Infrared concealed cistern and fittings



Product details

| | |
|--------------------------------|---------|
| Warranty: | 5 years |
| Max load: | N/A |
| Doc M compliant: | Yes |
| Suitable for wet areas: | Yes |

Features

- Flush valve and inlet valve Reg 4 Certified (WRAS, NSF, Kiwa, etc.)
- Supplied assembled for quick and easy installation
- Discreet Ø40mm IR sensor
- Sensor can be installed up to 250mm from cistern
- LED flush indication
- Front and top access panels
- Internal overflow warning
- Supports BREEAM.
- 6 litre mono flush
- Side inlet

Finish options

Electroplated



CP
Polished Chrome

Mechanical



SS
Satin Stainless Steel

Powder Coated



MB
Matt Black (RAL 9005)

Product description

Product code

Infrared concealed cistern, with fittings and sensor, mains powered

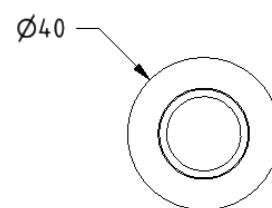
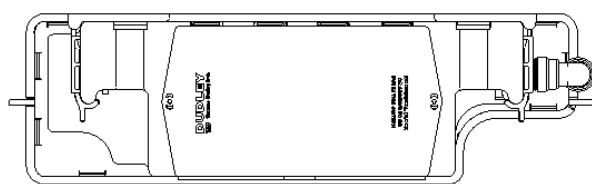
NY03-CISTIR01-**

Replace ** with 2-character short code for chosen finish (Mechanical / Electroplated / Powder Coated).
e.g., NY03-CISTIR01-CP

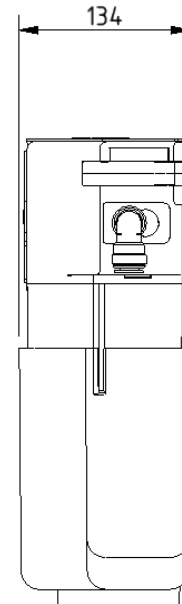
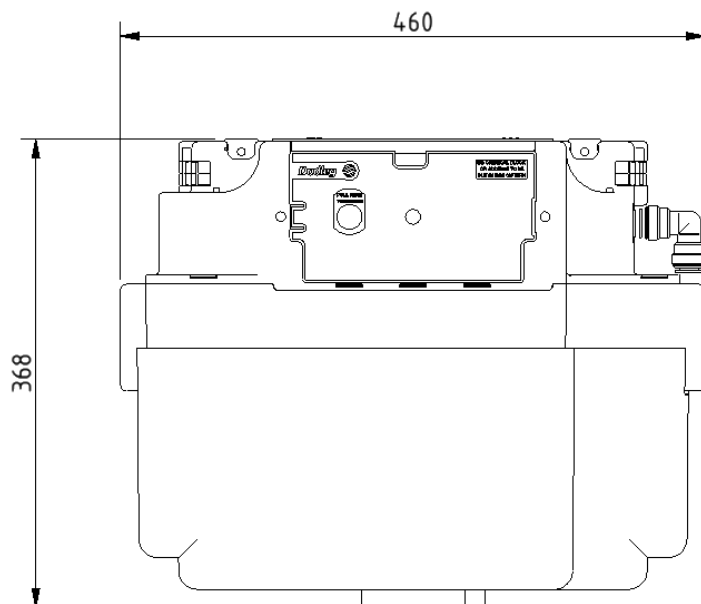
Specification

| | |
|---------------------------------|--------------|
| Operating voltage: | 6V DC |
| Mains supply: | 230V AC 50Hz |
| Sensor cable length: | 400mm |
| Sensor activation range: | Up to 50mm |
| Ingress protection: | IP44 |
| Maximum wall thickness: | Up to 45mm |

Dimensions (mm)



SENSOR
SCALE 1 : 2



Premium Doc M basin



Product details

| | |
|--------------------------------|----------|
| Warranty: | Lifetime |
| Max load: | N/A |
| Doc M compliant: | Yes |
| Suitable for wet areas: | Yes |

Features

- Multiple tap hole configurations available removing the need for blanking caps
- Complies with Part M of the Building Regulations
- No overflow

Does **NOT** come with wall fixings (P-000247-X00X)

Finish options



WH
White

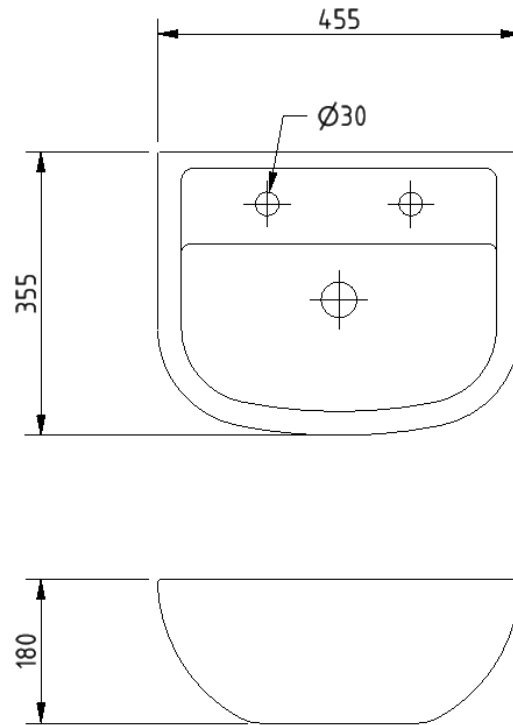
Product description

Premium Doc M basin, two tap holes, no overflow, white
 Premium Doc M basin, left handed tap hole, no overflow, white
 Premium Doc M basin, right handed tap hole, no overflow, white
 Premium Doc M basin, central tap hole, no overflow, white

Product code

NY02-SW-00100-WH
 NY02-SW-00101-WH
 NY02-SW-00102-WH
 NY02-SW-00103-WH

Dimensions (mm)



FOR TAP HOLE POSITION DIMENSIONS SEE PRODUCT SPECIFIC MARKETING DRAWING

Premium basin fixing kit



Product details

Warranty: 5 years

Max load: N/A

Doc M compliant: N/A

Suitable for wet areas: Yes

Features

- Heavy duty basin fixing
- For use with premium Doc M basin (NY02-SW-0010x-WH)

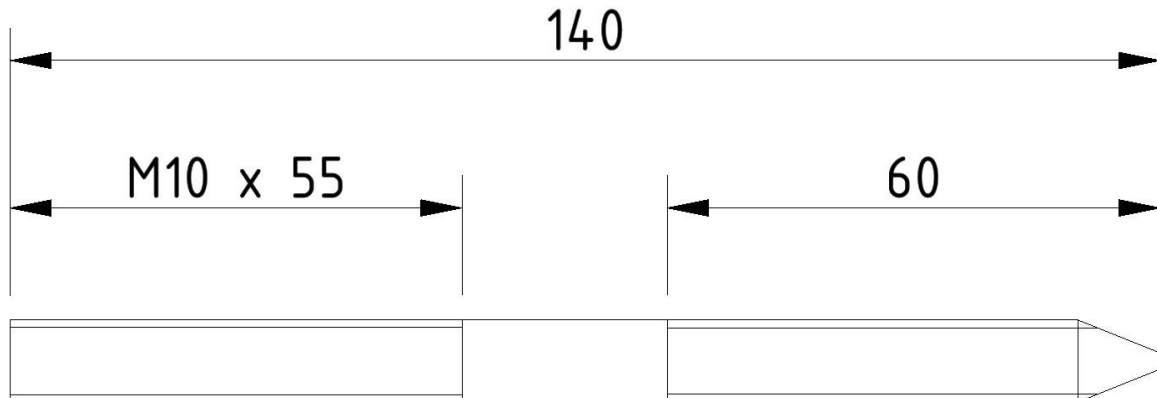
Product description

Premium basin fixing kit, M10 x 140mm

Product code

P-000247-X00X

Dimensions (mm)



Need some product advice? Contact our team of product specialists
+44(0)1642 710 719 | sales@fitzroyoflondon.com

www.fitzroyoflondon.com

DAT-P-000247 Doc Rev 1

Fitzroy of London may occasionally need to change specification of products and/or kit contents and reserves the right to do so.
We strive to keep our documentation up to date; however, we cannot guarantee this. We accept no liability for any information given on this data sheet.

Basin waste with stainless steel grid



Product details

Warranty: 2 years

Max load: N/A

Doc M compliant: Yes

Suitable for wet areas: Yes

Features

- Slotted type for use with basins without overflow
- Manufactured from high quality materials
- Quick and simple installation

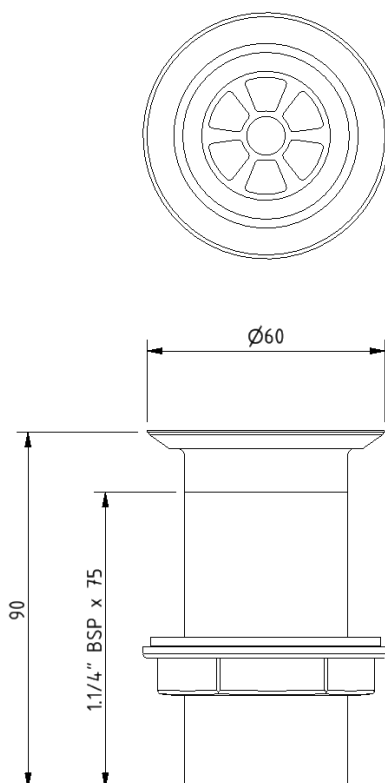
Product description

Basin waste, plastic body, white, stainless grid, unslotted, 1-1/4" BSP thread

Product code

P-000245-X00X

Dimensions (mm)



Fitzroy of London may occasionally need to change specification of products and/or kit contents and reserves the right to do so. We strive to keep our documentation up to date; however, we cannot guarantee this. We accept no liability for any information given on this data sheet.

Need some product advice? Contact our team of product specialists
+44(0)1642 710 719 | sales@fitzroyoflondon.com
www.fitzroyoflondon.com

Contemporary mains powered infrared tap



Product details

| | |
|--------------------------------|---------|
| Warranty: | 5 years |
| Max load: | N/A |
| Doc M compliant: | Yes |
| Suitable for wet areas: | Yes |

Features

- Complies with Part M of the Building Regulations
- Reg 4 Certified (WRAS, NSF, Kiwa, etc.)
- Must be installed with a thermostatic mixing valve for premixed water (part code: BPLTMV)
- Hygienic touch-free operation
- Shuts off when hand is removed from in front of the sensor
- Water delivery automatically stops after 90 seconds (can be adjusted)

Finish options

Electroplated



CP
Polished Chrome

Mechanical



SS
Satin Stainless Steel

Powder Coated



MB
Matt Black (RAL 9005)

Product description

Contemporary infrared tap, with fittings, mains powered

Product code

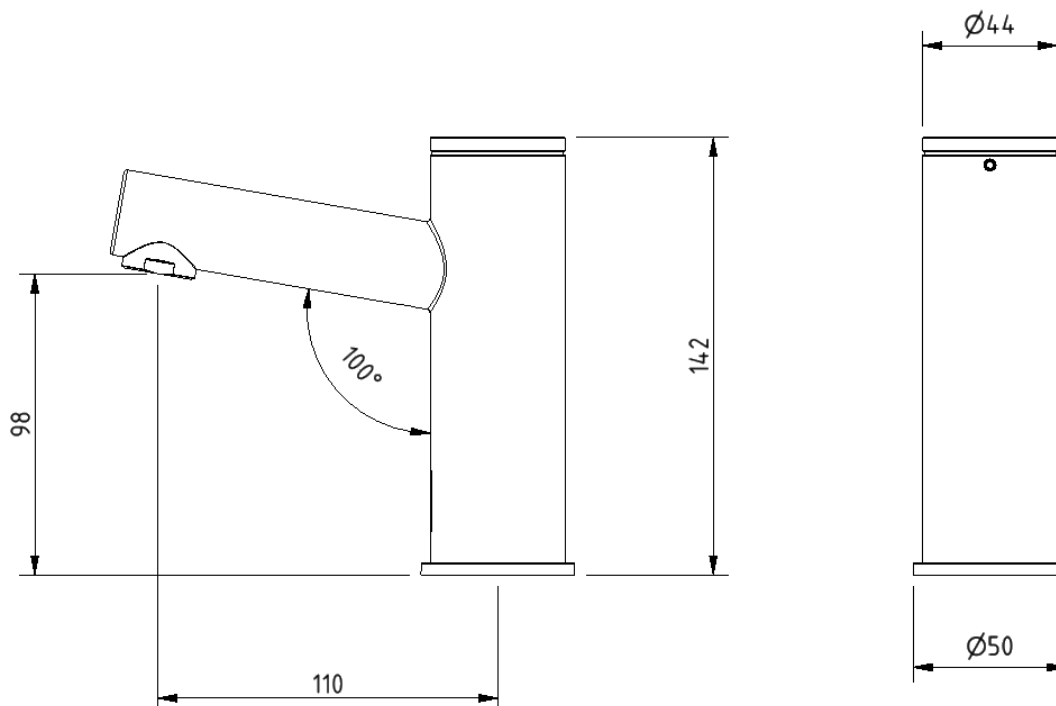
NY03-TAPIR01-**

Replace ** with 2-character short code for chosen finish.
e.g., NY03-TAPIR01-CP

Specification

| | |
|---------------------------------------|---------------------------|
| Operating voltage: | 9V DC |
| Mains supply: | 230V AC 50Hz |
| Maximum dynamic pressure: | 0.5 bar MIN, 8 bar MAX |
| Maximum hot water supply temperature: | 70 degrees Celsius |
| Sensor range: | 80 - 300mm (220mm preset) |
| Connection: | ½" BSP |
| Flow rate: | 6 litre per minute |

Dimensions (mm)



Luxury straight stainless steel concealed fixing grab rail



Product details

| | |
|--------------------------------|---------|
| Warranty: | 5 Years |
| Max load: | 150 kg |
| Doc M compliant: | Yes |
| Suitable for wet areas: | Yes |

Features

- High quality stainless steel construction
- Concealed fixing grab rails
- Complies with Doc M of the Building Regulations
- Stylish 'T-Bar' design

Finish options

Mechanical



SS
Satin Stainless Steel



SP
Polished Stainless Steel

Powder Coated



MB
Matt Black (RAL 9005)

Product description

Product code

Luxury straight, stainless steel concealed fixing grab rail, 300mm

F22-0300-LSC-**

Luxury straight, stainless steel concealed fixing grab rail, 450mm

F22-0450-LSC-**

Luxury straight, stainless steel concealed fixing grab rail, 600mm

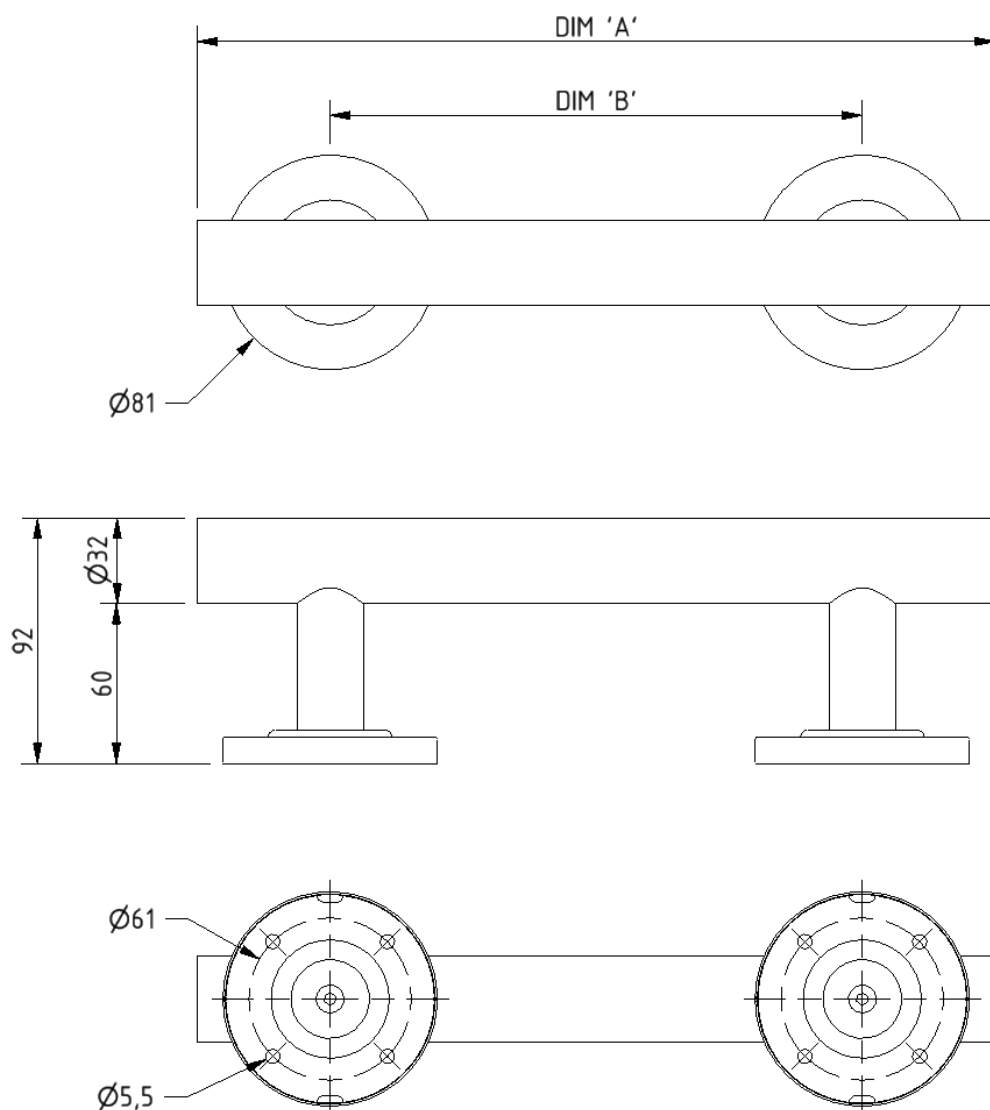
F22-0600-LSC-**

Luxury straight, stainless steel concealed fixing grab rail, 900mm

F22-0900-LSC-**

Replace ** with 2-character short code for chosen finish (Mechanical / Powder Coated).
e.g., F22-0300-LSC-SS

Dimensions (mm)



| PRODUCT CODE | F22-0300-LSC | F22-0450-LSC | F22-0600-LSC | F22-0900-LSC |
|--------------|--------------|--------------|--------------|--------------|
| DIM 'A' | 300 | 450 | 600 | 900 |
| DIM 'B' | 200 | 300 | 450 | 750 |

Luxury stainless steel back rest rail and pad with concealed fixings



Product details

| | |
|--------------------------------|---------|
| Warranty: | 5 years |
| Max load: | N/A |
| Doc M compliant: | Yes |
| Suitable for wet areas: | Yes |

Features

- Durable wipe clean polyurethane pad
- Non-corrosive stainless steel construction
- Saddle clips for fixing pad to rail
- Complies with Part M of the Building Regulations
- Stylish T-Bar design

Finish options

Mechanical



SS
Satin Stainless Steel



SP
Polished Stainless Steel

Powder coated



MB
Matt Black (RAL 9005)

Product description

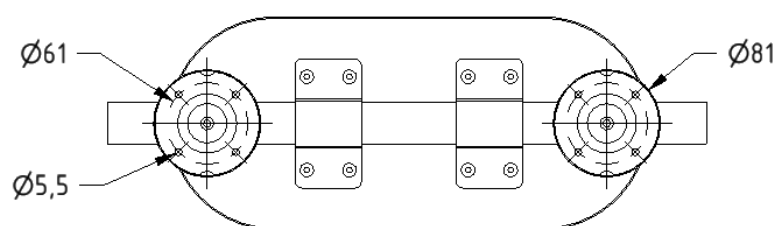
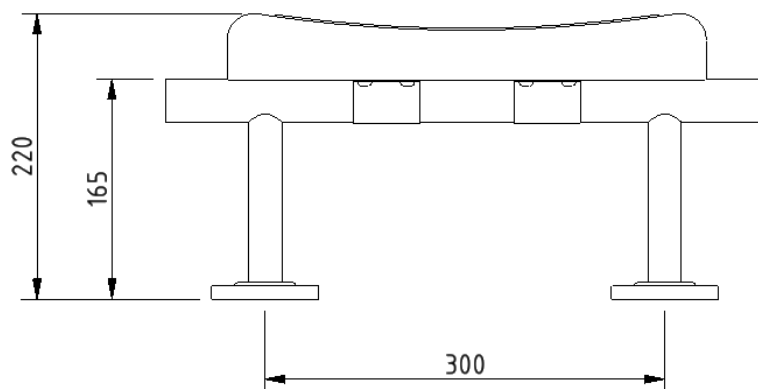
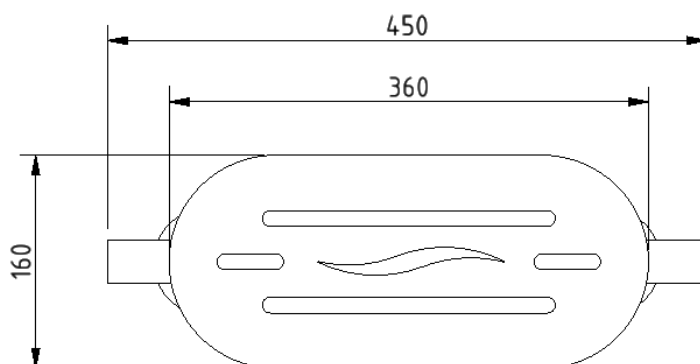
Luxury back rest rail, including pad, stainless steel, concealed fixings, overall projection 220mm

Product code

F22-B220-LSC-**

Replace ** with 2-character short code for chosen finish (Mechanical / Powder Coated).
e.g., F22-B220-LSC-SS

Dimensions (mm)



Contemporary single arm stainless steel friction hinged rail with concealed fixings



Product details

Warranty: 5 years

Max load: 90 kg

Doc M compliant: Yes

Suitable for wet areas: Yes

Features

- Contemporary single arm design
- Premium friction folding mechanism
- High quality stainless steel construction
- Complies with Part M of the Building Regulations

Finish options

Mechanical



SP

Polished Stainless Steel



SS

Satin Stainless Steel

Powder Coated



MB

Matt Black (RAL 9005)

Product description

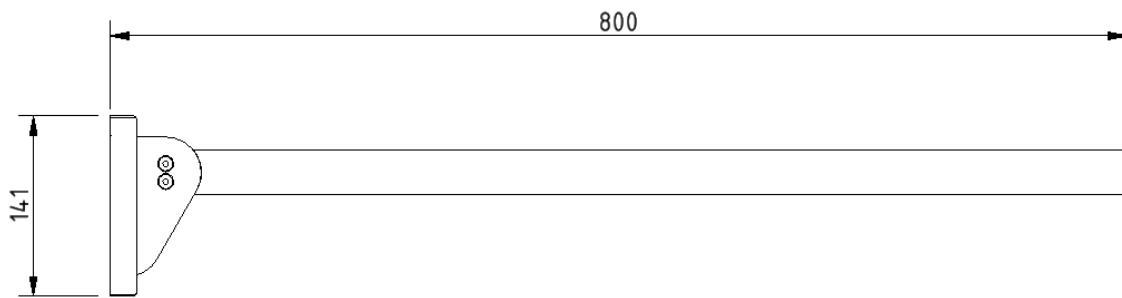
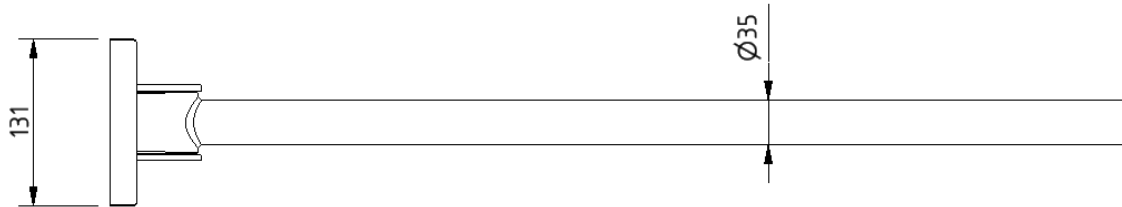
Contemporary single arm friction rail, stainless steel, concealed fixings

Product code

310480C/**

Replace ** with 2-character short code for chosen finish (Mechanical / Powder Coated).
e.g., 310480C/SP

Dimensions (mm)



TMV3 inline thermostatic mixing valve



Product details

Warranty: 2 years

Max load: N/A

Doc M compliant: Yes

Suitable for wet areas: Yes

Features

- TMV3 approved & Reg 4 Certified (WRAS, NSF, Kiwa, etc.)
- Complies with Part M of the Building Regulations
- Building Regulations Part G compliant
- Highly resistant to scaling
- Anti-tamper proof head
- Complies with HTM04-01 D08
- TMV2 approved & complies with BS EN 1111 & BS EN 1287:2017
- Integral check valves & strainers

Finish options



CP
Polished Chrome

Product description

TMV3 inline thermostatic mixing valve - 15mm

Product code

BPLTMV

Dimensions (mm)

