

Wall hung Doc M toilet pack with stainless steel concealed fixing grab rails



Product details

Warranty:	See individual products
Max load:	See individual products
Doc M compliant:	Yes
Suitable for wet areas:	Yes

Features

- Complies with Part M of the Building Regulations
- Inlet valve and syphon Reg 4 Certified (WRAS, NSF, Kiwa, etc.)
- Concealed fixing stainless steel grab rails
- Universal - suitable for left or right handed transfer
- Simple one box solution

Finish options

Mechanical



SP
Polished Stainless Steel



SS
Satin Stainless Steel

Product description

Wall hung Doc M toilet pack, stainless steel, concealed fixings

Product code

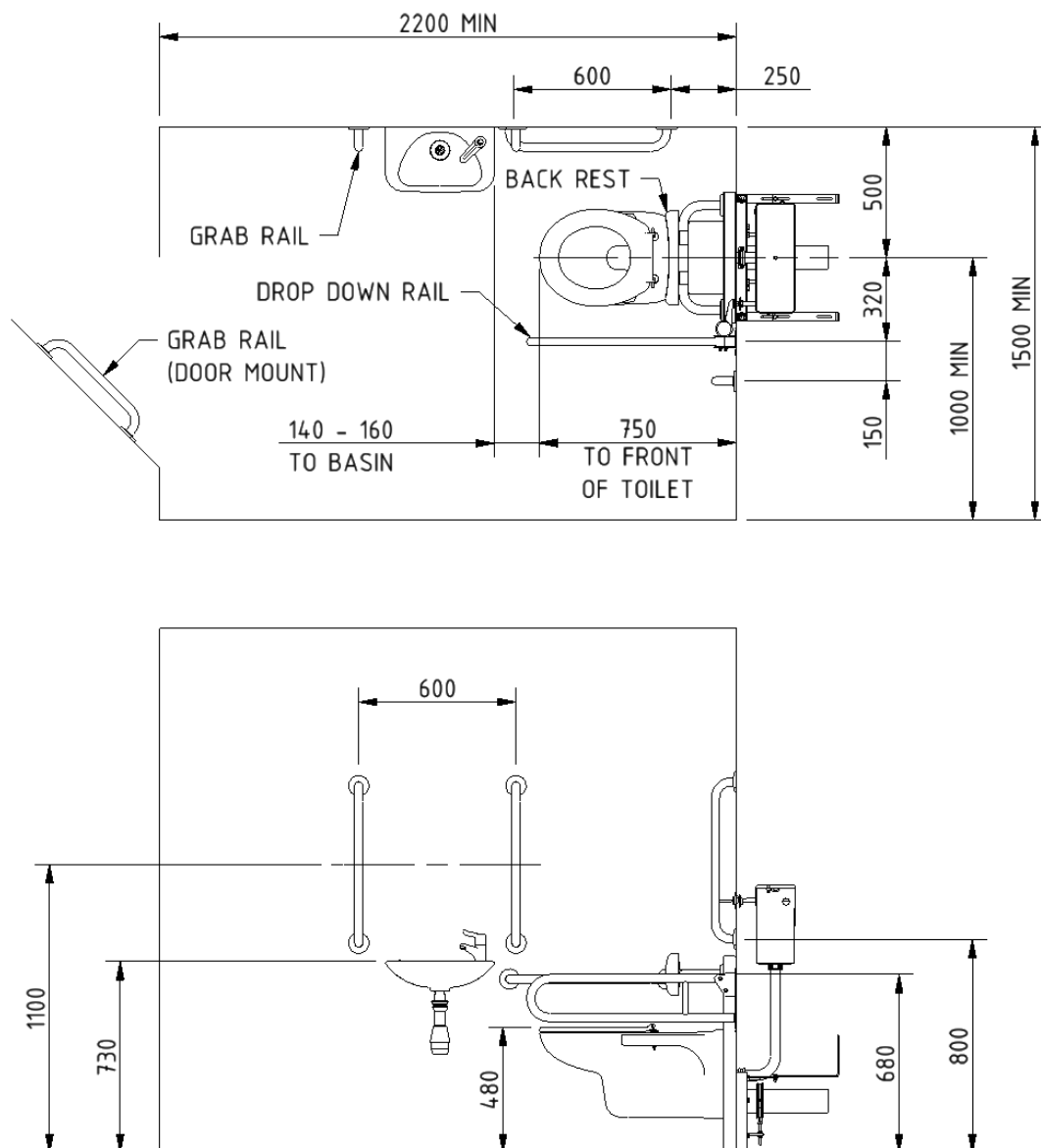
DM830KCS-**

Replace ** with 2-character short code for chosen finish.
e.g., DM830KCS-SP

Pack contents

- 4 x 600mm stainless steel grab rails with concealed fixings
- 1 x 450mm stainless steel grab rail with concealed fixings
- 1 x 800mm stainless steel hinged support rail
- 1 x 220mm stainless steel back rest rail and pad with concealed fixing
- 1 x Wall hung box rim Doc M pan
- 1 x Floor mounting frame for wall hung pan
- 1 x Concealed cistern with fittings, flush pipe, and Doc M concealed cistern spatula lever
- 1 x Ring only toilet seat
- 1 x Compact finger rinse Doc M basin
- 1 x Sequential basin mixer tap
- 1 x Tap hole stopper
- 1 x Basin waste

Dimensions (mm)



Fitzroy of London may occasionally need to change specification of products and/or kit contents and reserves the right to do so. We strive to keep our documentation up to date; however, we cannot guarantee this. We accept no liability for any information given on this data sheet.

Wall hung Doc M pan



Product details

Warranty:	5 years
Max load:	N/A
Doc M compliant:	Yes
Suitable for wet areas:	Yes

Features

- Extended projection to aid compliance with Part M of the Building Regulations
- UKCA and CE compliant
- Contemporary feel
- Box rim ran

For 750mm projection, wall should be built out by 50mm

Finish options



WH
White

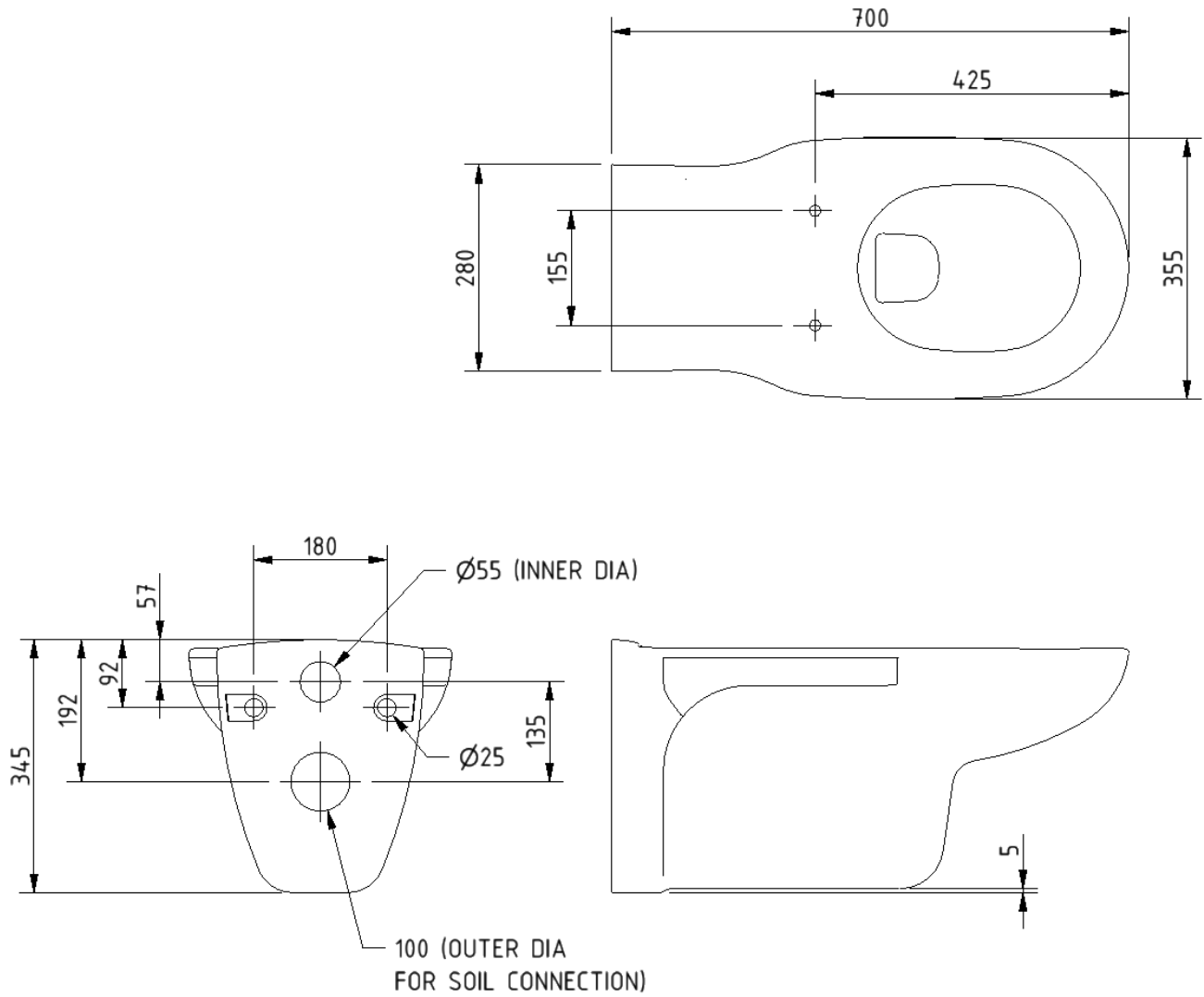
Product description

Wall hung Doc M pan, 700mm projection, no fixings, white

Product code

PANWH70

Dimensions (mm)



Low frame unit for wall hung pan



Product details

Warranty: 5 years

Max load: 400 kg

Doc M compliant: Yes

Suitable for wet areas: Yes

Features

- Comes with flush pipe and WC pan connector clamps
- Adjustable legs for WC pan height fixing flexibility
- Wall and floor fixing brackets can be fixed through 180 degrees and 360 degrees to simplify installation
- Strong steel square hollow construction
- Load tested to 4kN for compliance with BS EN 997

Finish options

- As standard:**
- Blue powder coated
 - Zinc plated wall and floor brackets

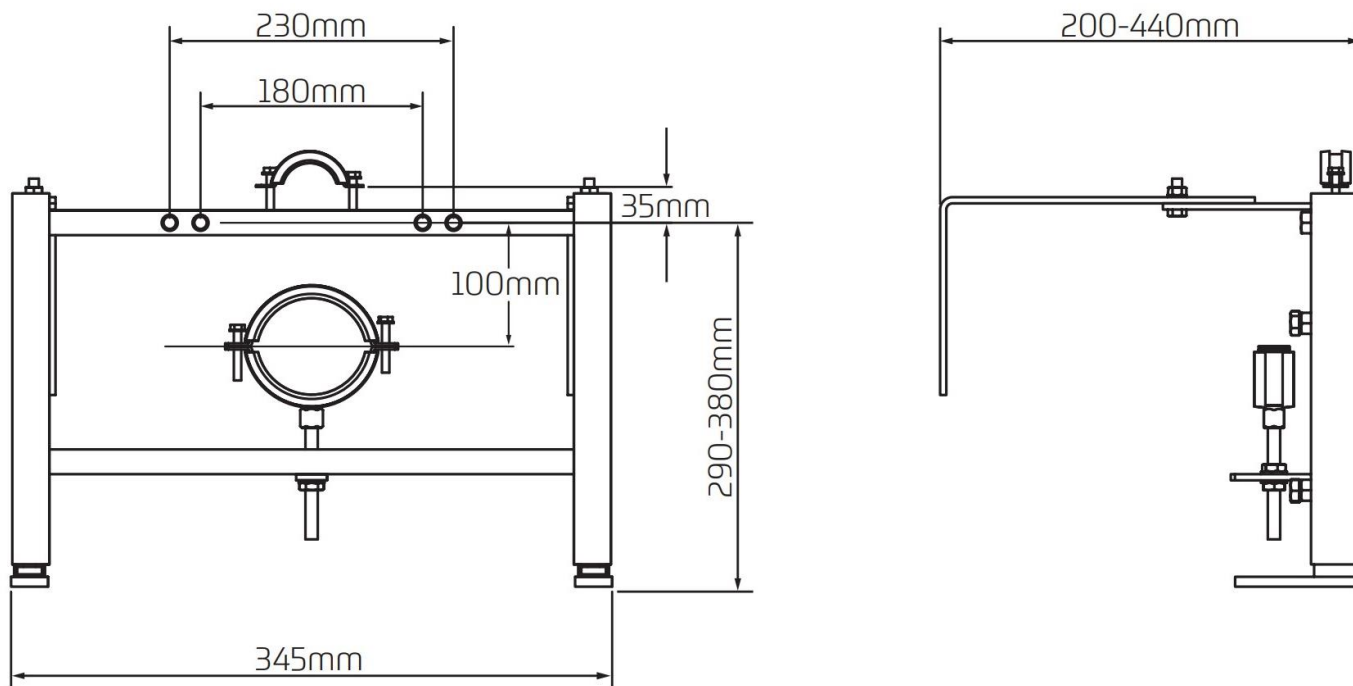
Product description

Low frame unit for wall hung pan

Product code

B-WALLHUNGFRAME

Dimensions (mm)



*For distances between 160-200mm the brackets will need to be reduced in length by cutting.

Toilet seat, ring only, stainless steel pillar hinge



Product details

Warranty: 2 years

Max load: 150 kg

Doc M compliant: Yes

Suitable for wet areas: Yes

Features

- Complies with Part M of the Building Regulations
- Anti-bacterial, strong and durable Duroplast seat
- Ergonomic and comfortable shape
- Stainless steel hinge (bottom fix as standard)
Additional hinge pack to convert to top fix: NY-TOPFIXHINGE
- Adjustable locating buffers
- Fits close coupled, low level, back to wall and wall hung pans

Finish options



DB
Dark Blue (RAL 5011)



DG
Dark Grey (RAL 7016)



GY
Grey (RAL 7005)



WH
White (RAL 9016)

Product description

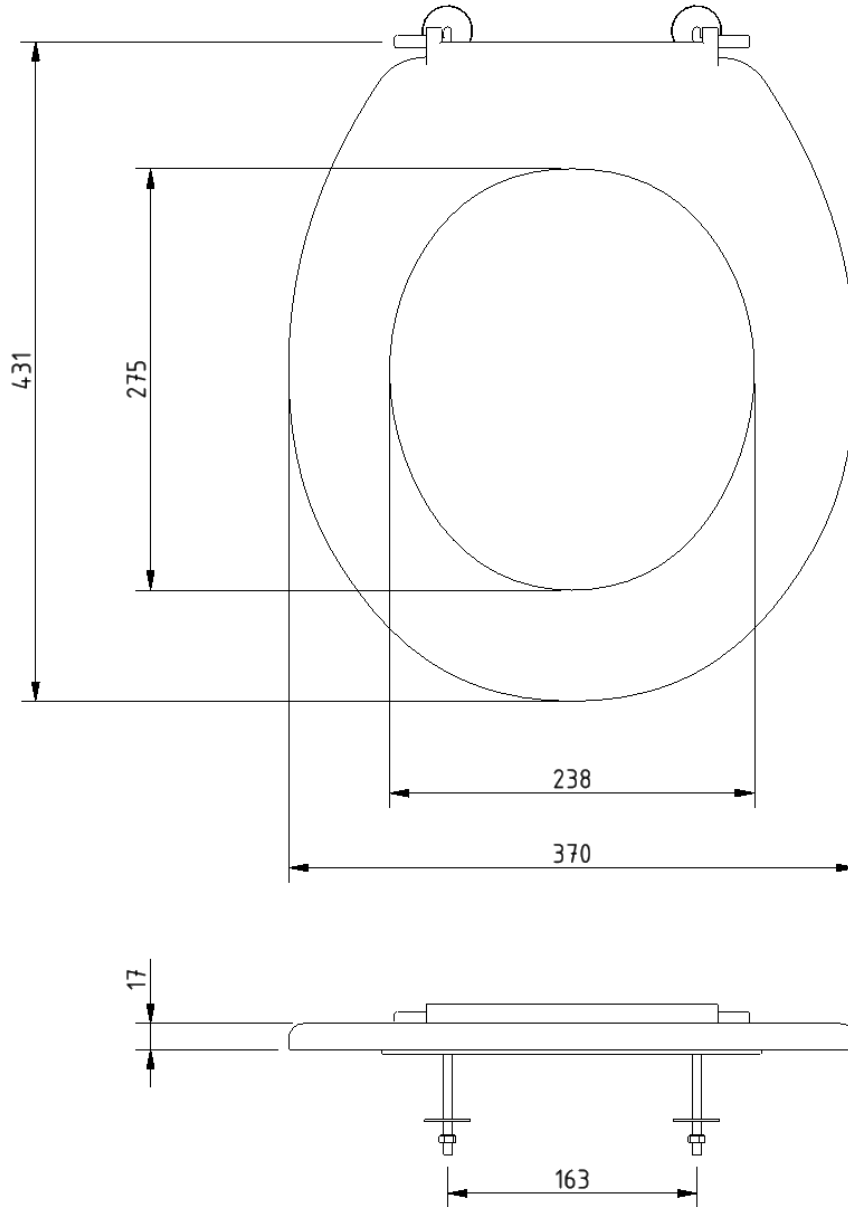
Toilet seat, ring only, stainless steel pillar hinge

Product code

260015/**

Replace ** with 2-character short code for chosen finish.
e.g., 260015/DB

Dimensions (mm)



Concealed cistern and fittings



Product details

Warranty: 2 years

Max load: N/A

Doc M compliant: N/A

Suitable for wet areas: Yes

Features

- Syphon and inlet valve Reg 4 Certified (WRAS, NSF, Kiwa, etc.)
- Top access
- 6 litre flush
- Internal / external overflow warning
- High density polystyrene construction

Does not come with flush lever or flush pipe

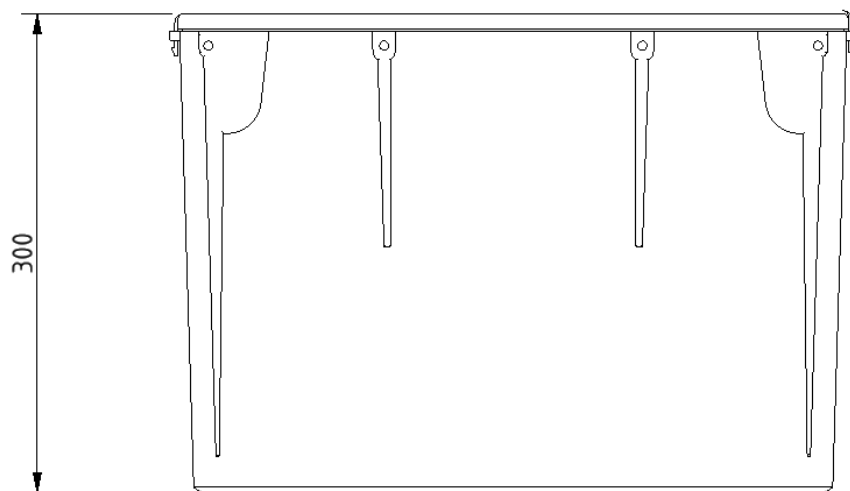
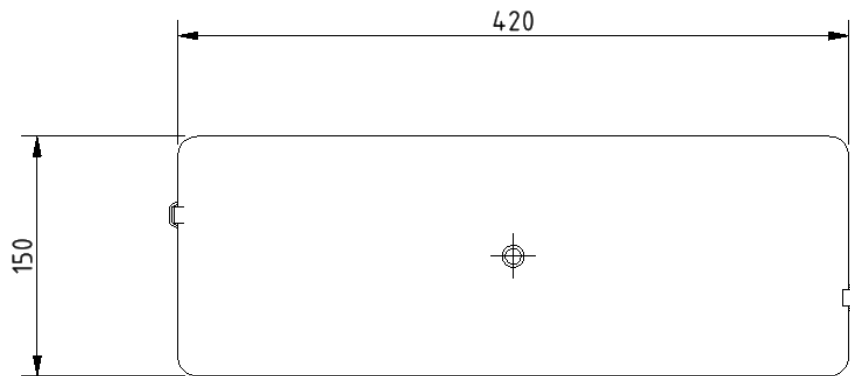
Product description

Concealed cistern and fittings, no lever or flush pipe

Product code

B-CISTHIDE

Dimensions (mm)



Concealed cistern spatula lever



Product details

Warranty: 2 years

Max load: N/A

Doc M compliant: Yes

Suitable for wet areas: Yes

Features

- Complies with Part M of the Building Regulations
- Easy operation for users with limited dexterity
- For use with concealed cisterns

Finish options

Powder Coated



CP
Polished Chrome

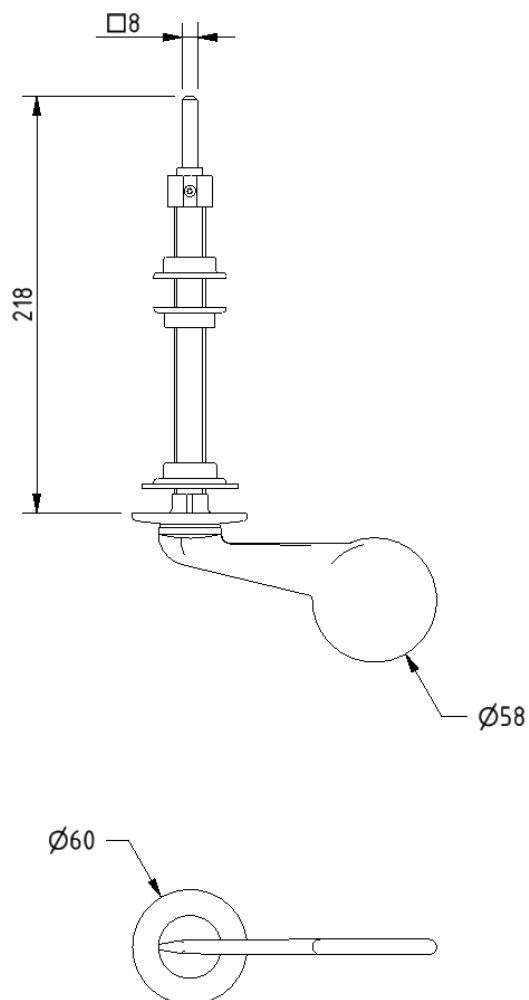
Product description

Concealed cistern spatula lever, 215mm spindle, polished chrome

Product code

P-000243-X00X

Dimensions (mm)



Compact finger rinse Doc M basin



Product details

Warranty: Lifetime

Max load: N/A

Doc M compliant: Yes

Suitable for wet areas: Yes

Features

- Two tap holes for left or right-handed configuration
- Compact design to maximise space for a wheelchair user
- Complies with Part M of the Building Regulations
- Contemporary design
- No overflow
- CE Marked, compliant sanitary ware
- Wall fixings included

Finish options



WH
White (RAL 9016)

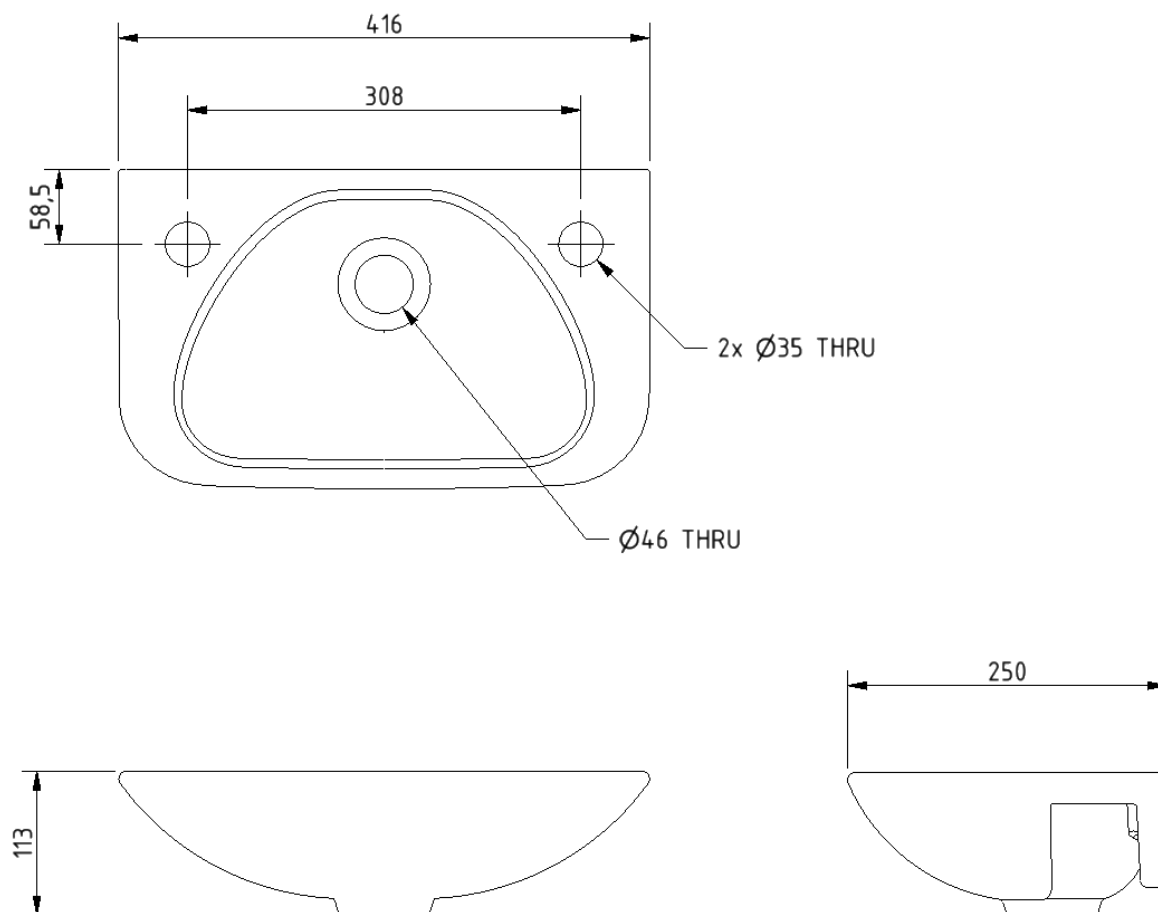
Product description

Compact finger rinse Doc M basin, two tap holes, no overflow, white (RAL 9016)

Product code

F20-BA01-CER-WH

Dimensions (mm)



Polished chrome sequential basin mixer tap



Product details

Warranty:	2 years
Max load:	N/A
Doc M compliant:	Yes
Suitable for wet areas:	Yes
Flexi tap tail connection (to tap body):	M10 thread
Flexi tap tail (onward connection):	½ inch BSP

Features

- Reg 4 certified (WRAS, NSF, Kiwa, etc.)
- Easy operation for users with limited dexterity
- Cold start

Finish options



CP
Polished Chrome

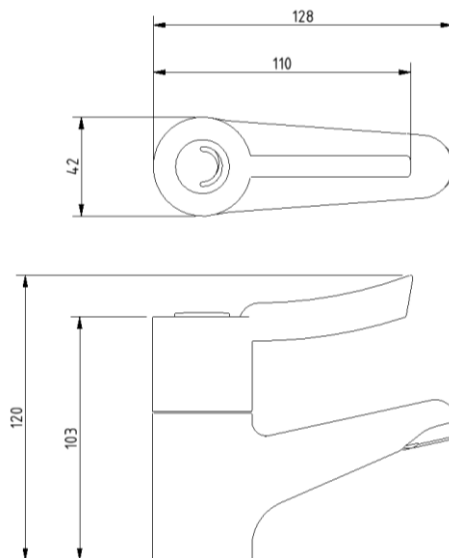
Product description

Sequential basin mixer tap, polished chrome

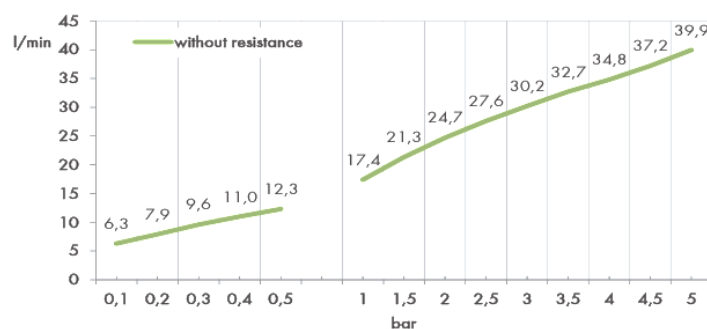
Product code

BPLMON

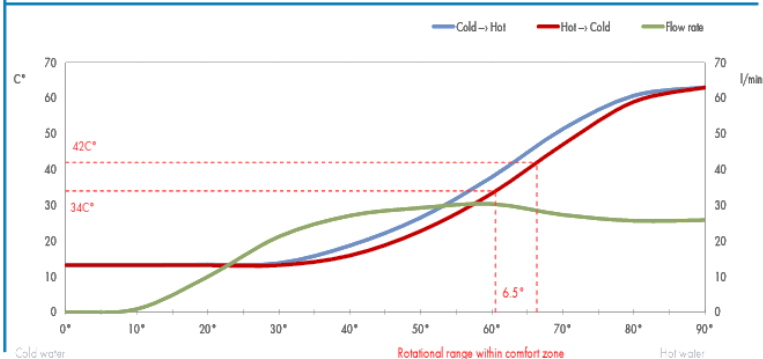
Dimensions (mm)



FLOW RATE CURVE



FLOW RATE & HYSTERESIS CURVES



Basin waste with stainless steel grid



Product details

Warranty: 2 years

Max load: N/A

Doc M compliant: Yes

Suitable for wet areas: Yes

Features

- Slotted type for use with basins without overflow
- Manufactured from high quality materials
- Quick and simple installation

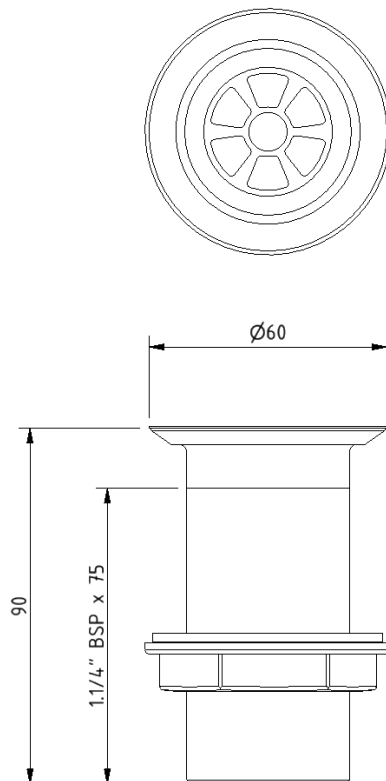
Product description

Basin waste, plastic body, white, stainless grid, unslotted, 1-1/4" BSP thread

Product code

P-000245-X00X

Dimensions (mm)



Fitzroy of London may occasionally need to change specification of products and/or kit contents and reserves the right to do so. We strive to keep our documentation up to date; however, we cannot guarantee this. We accept no liability for any information given on this data sheet.

Need some product advice? Contact our team of product specialists
+44(0)1642 710 719 | sales@fitzroyoflondon.com
www.fitzroyoflondon.com

Stainless steel back rest rail with concealed fixings and white pad



Product details

Warranty:	5 years
Max load:	N/A
Doc M compliant:	Yes
Suitable for wet areas:	Yes

Features

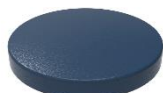
- Complies with Part M of the Building Regulations
- Non-corrosive stainless steel construction
- Durable wipe clean polyurethane pad
- Closed cell polyurethane construction for maximum hygiene and comfort
- Saddle clips for fixing pad to rail

Finish options

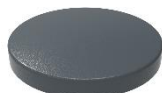
Powder Coated



WH
White (RAL 9016)



DB
Dark Blue (RAL 5011)



DG
Dark Grey (RAL 7016)



GY
Grey (RAL 7005)

Mechanical



SS
Satin Stainless Steel



SP
Polished Stainless Steel

Product description

Product code

Back rest rail with white pad, stainless steel, 220mm projection, concealed fixings

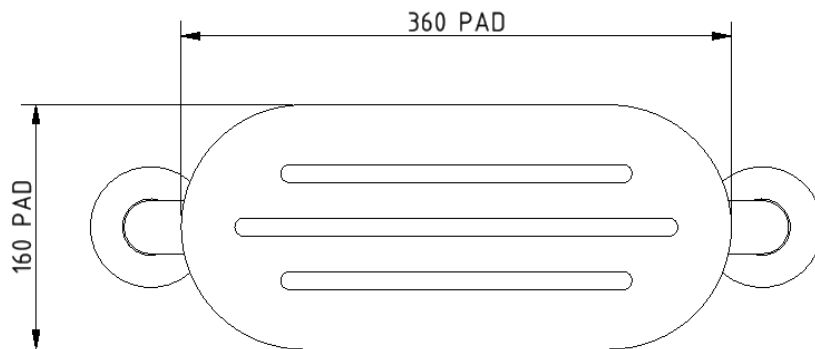
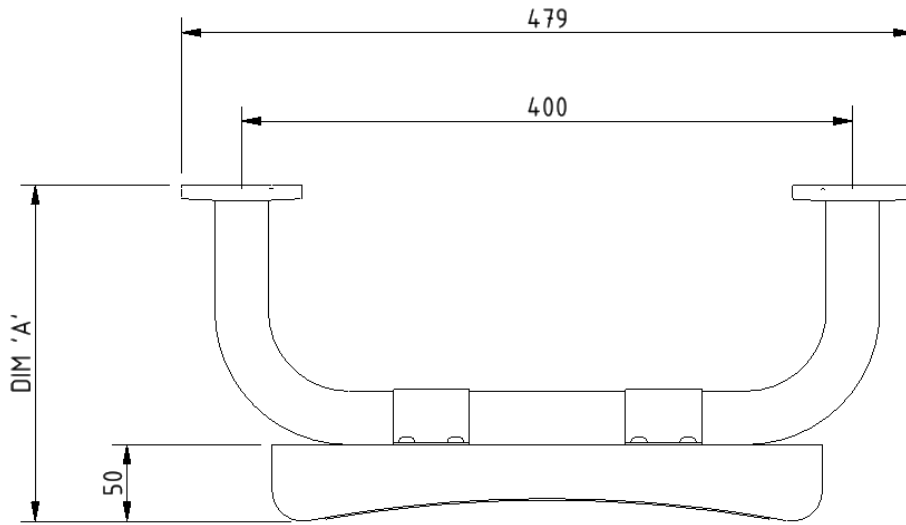
BR-220SC/**

Back rest rail with white pad, stainless steel, 270mm projection, concealed fixings

BR-270SC/**

Replace ** with 2-character short code for chosen finish (Mechanical / Powder Coated).
e.g., BR-220SC/WH

Dimensions (mm)



PRODUCT CODE	BR-220SC/**	BR-270SC/**
DIM 'A'	220	270

Stainless steel lift and lock hinged support rail



Product details

Warranty: 5 years

Max load: 135 kg

Doc M compliant: Yes (800mm only)

Suitable for wet areas: Yes

Features

- Complies with Part M of the Building Regulations
- Lift and lock folding mechanism
- Non-corrosive stainless steel construction
- Toilet roll holder (optional)

Finish options

Powder Coated



DB
Dark Blue (RAL 5011)



GY
Grey (RAL 7005)



DG
Dark Grey (RAL 7016)



WH
White (RAL 9016)

Mechanical



SP
Polished Stainless Steel



SS
Satin Stainless Steel

Product description

Product code

Hinged lift and lock support rail, stainless steel, 650mm

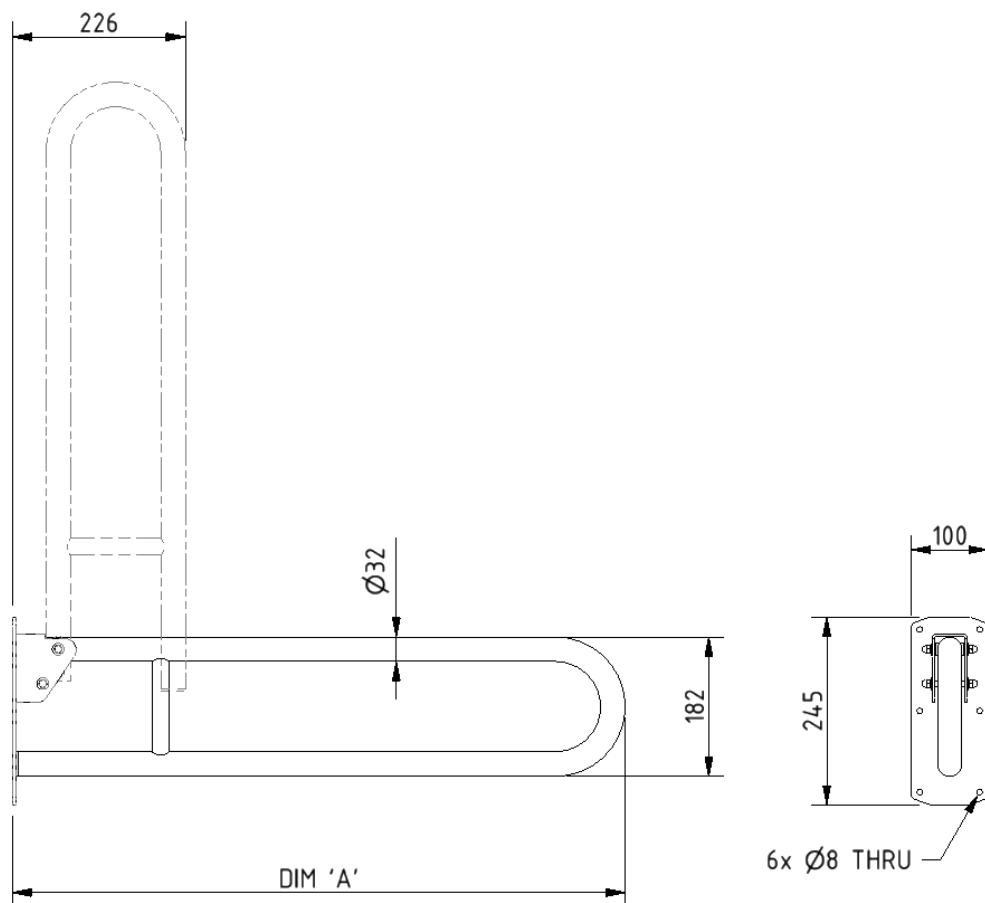
211865/**

Hinged lift and lock support rail, stainless steel, 800mm

211880/**

Replace ** with 2-character code for chosen finish (Powder Coated / Mechanical).
e.g., 211865/DB

Dimensions (mm)



PRODUCT CODE	211865/**	211880/**
DIM 'A'	650	800

Round flange stainless steel grab rail with concealed fixings, 32mm diameter



Product details

Warranty: 5 Years

Max load: 200 kg

**Doc M
compliant:** Yes

**Suitable for wet
areas:** Yes

Features

- Stainless steel construction
- Concealed fixings
- Complies with Part M of the Building Regulations

Finish options



SP
Polished Stainless Steel



SS
Satin Stainless Steel

Product description

Product code

Grab rail, stainless steel, concealed fixings, 32mm diameter, 300mm

GR-12/32C/**

Grab rail, stainless steel, concealed fixings, 32mm diameter, 450mm

GR-18/32C/**

Grab rail, stainless steel, concealed fixings, 32mm diameter, 600mm

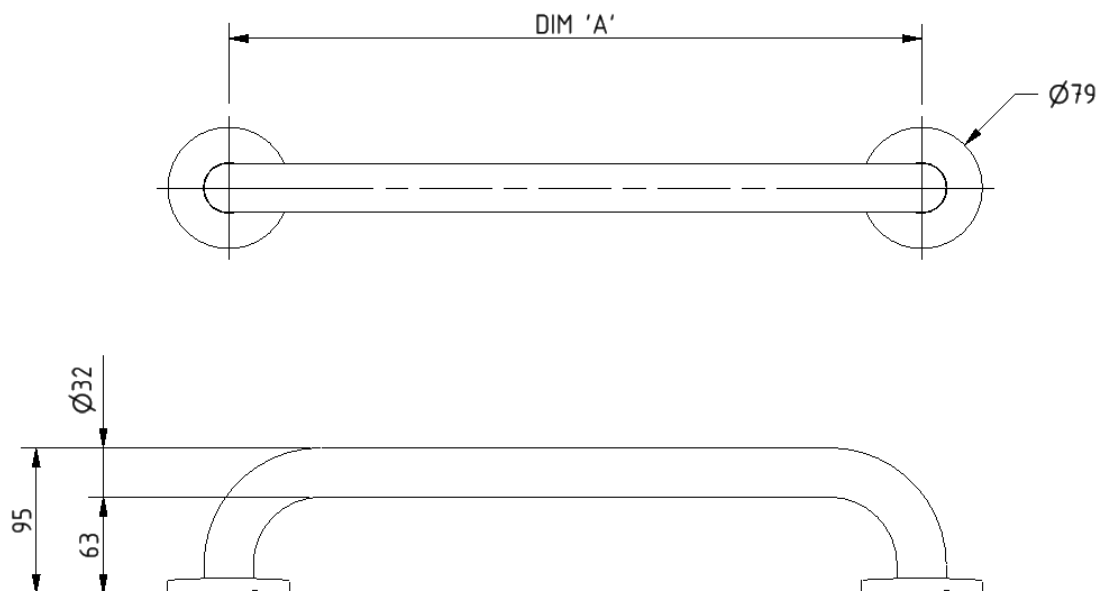
GR-24/32C/**

Grab rail, stainless steel, concealed fixings, 32mm diameter, 900mm

211090/**

Replace ** with 2-character short code for chosen finish.
e.g., GR-12/32C/SP

Dimensions (mm)



PRODUCT CODE	GR-12/32C**	GR-18/32C**	GR-24/32C**	211090/**
DIM 'A'	300	450	600	900