

D-Bar grab rail, steel, with concealed fixings, 35mm diameter tube



Product details

Warranty: 2 years

Max load: 200 kg

Doc M compliant: Yes

Suitable for wet areas: No

Features

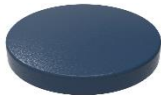
- Complies with Part M of the Building Regulations
- Robust steel construction
- Concealed Fixing Grab Rail
- Rotational lock in covers

Finish options

Powder Coated



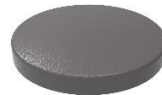
WH
White (RAL 9016)



DB
Dark Blue (RAL 5011)



DG
Dark Grey (RAL 7016)



GY
Grey (RAL 7005)

Product description

Grab rail, D-Bar, mild steel, concealed fixings, Ø35mm, 300mm length

Grab rail, D-Bar, mild steel, concealed fixings, Ø35mm, 450mm length

Grab rail, D-Bar, mild steel, concealed fixings, Ø35mm, 600mm length

Product code

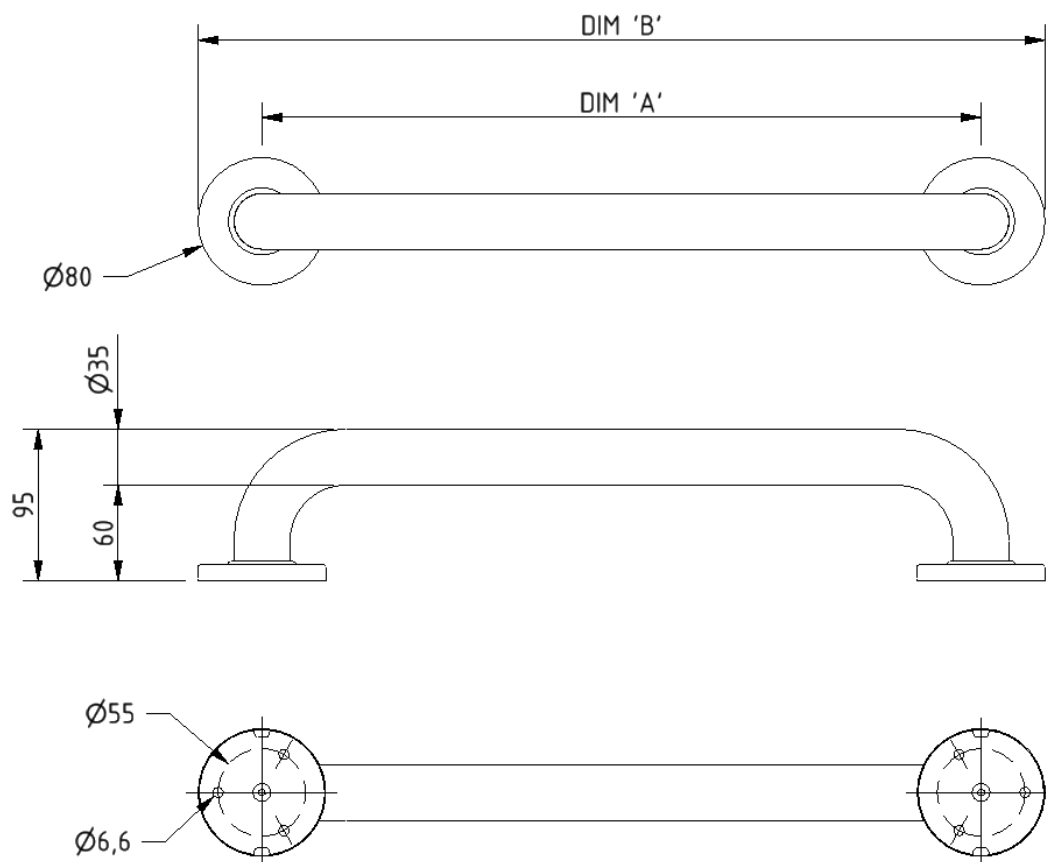
F20-0300-MSC-**

F20-0450-MSC-**

F20-0600-MSC-**

Replace ** with 2-character short code for chosen finish (Powder Coated).
e.g., F20-0300-MSC-WH

Dimensions (mm)



PRODUCT CODE	F20-0300-MSC	F20-0450-MSC	F20-0600-MSC
DIM 'A'	300	450	600
DIM 'B'	380	530	680