

## Low level Doc M ware set with ring only seat



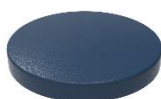
### Product details

<b>Warranty:</b>	See individual products
<b>Max load:</b>	See individual products
<b>Doc M compliant:</b>	Yes
<b>Suitable for wet areas:</b>	Yes

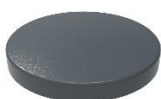
### Features

- Complies with Part M of the Building Regulations
- Low level pan & cistern assembly
- Inlet valve and syphon Reg 4 Certified (WRAS, NSF, Kiwa, etc.)

### Finish options



**DB**  
Dark Blue (RAL 5011)



**DG**  
Dark Grey (RAL 7016)



**GY**  
Grey (RAL 7006)



**WH**  
White (RAL 9016)

### Product description

### Product code

Low level Doc M ware set, pan & cistern assembly, ring only seat

LLWARESET/\*\*

Low level Doc M ware set, pan & lockable cistern assembly, ring only seat

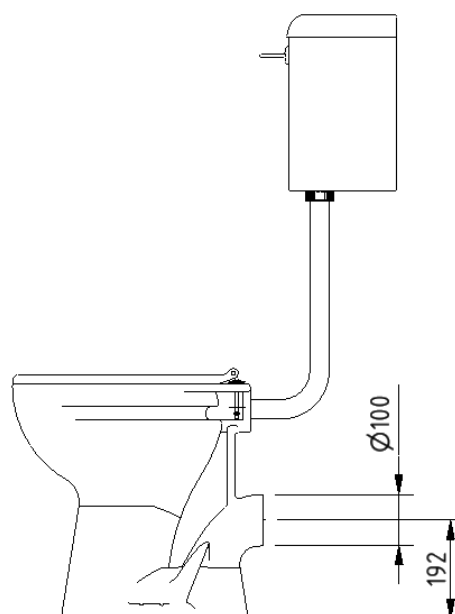
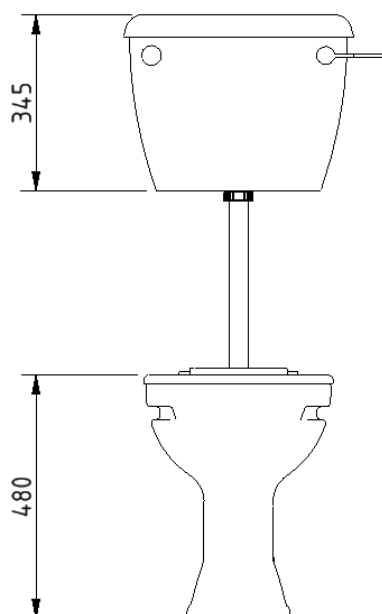
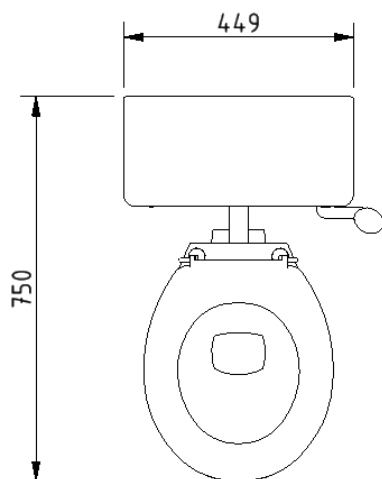
LLWARESET/LC/\*\*

Replace \*\* with 2-character short code for chosen finish (Powder Coated).  
e.g., LLWARESET/DB

### Pack contents

- 1 x Low level box rim Doc M pan
- 1 x Low level cistern for box rim pan (optional lockable lid)
- 1 x Low level cistern fittings pack with Doc M spatula lever and flush pipe
- 1 x Ring only toilet seat

### Dimensions (mm)



## Low level box rim Doc M pan



### Product details

**Warranty:** Lifetime

**Max load:** 400 kg

**Doc M compliant:** Yes

**Suitable for wet areas:** Yes

### Features

- Complies with Part M of the Building Regulations
- UKCA and CE compliant
- Comfort height to allow easier side transfer from wheelchair

### Finish options



**WH**  
White (RAL 9016)

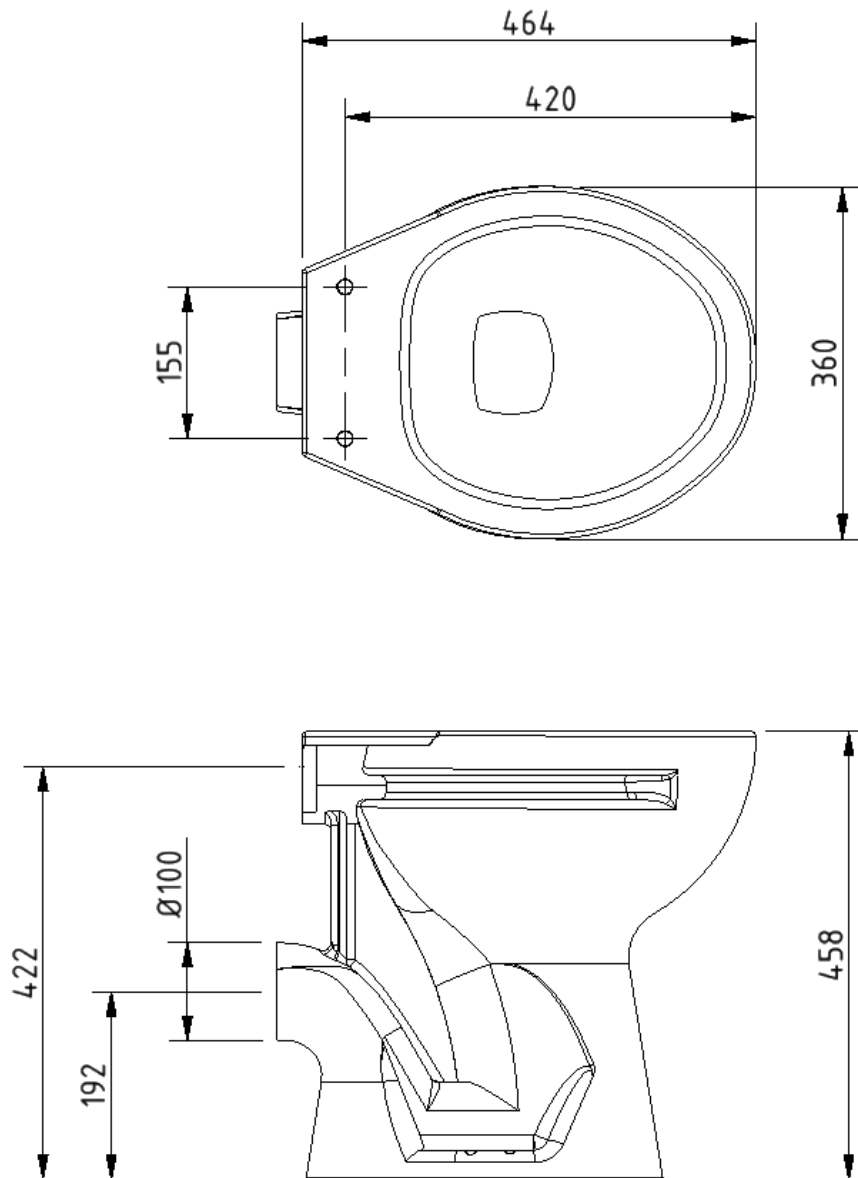
### Product description

Low level box rim Doc M pan, white

### Product code

B-BWPANLL-1

Dimensions (mm)



## Low level cistern for box rim pan



### Product details

<b>Warranty:</b>	Lifetime
<b>Max load:</b>	N/A
<b>Doc M compliant:</b>	Yes
<b>Suitable for wet areas:</b>	Yes

### Features

- Complies with Part M of the Building Regulations
- UKCA & CE compliant
- Suitable for front lever
- Bottom inlet
- Universal - either left or right handed
- Lockable lid option

### Finish options



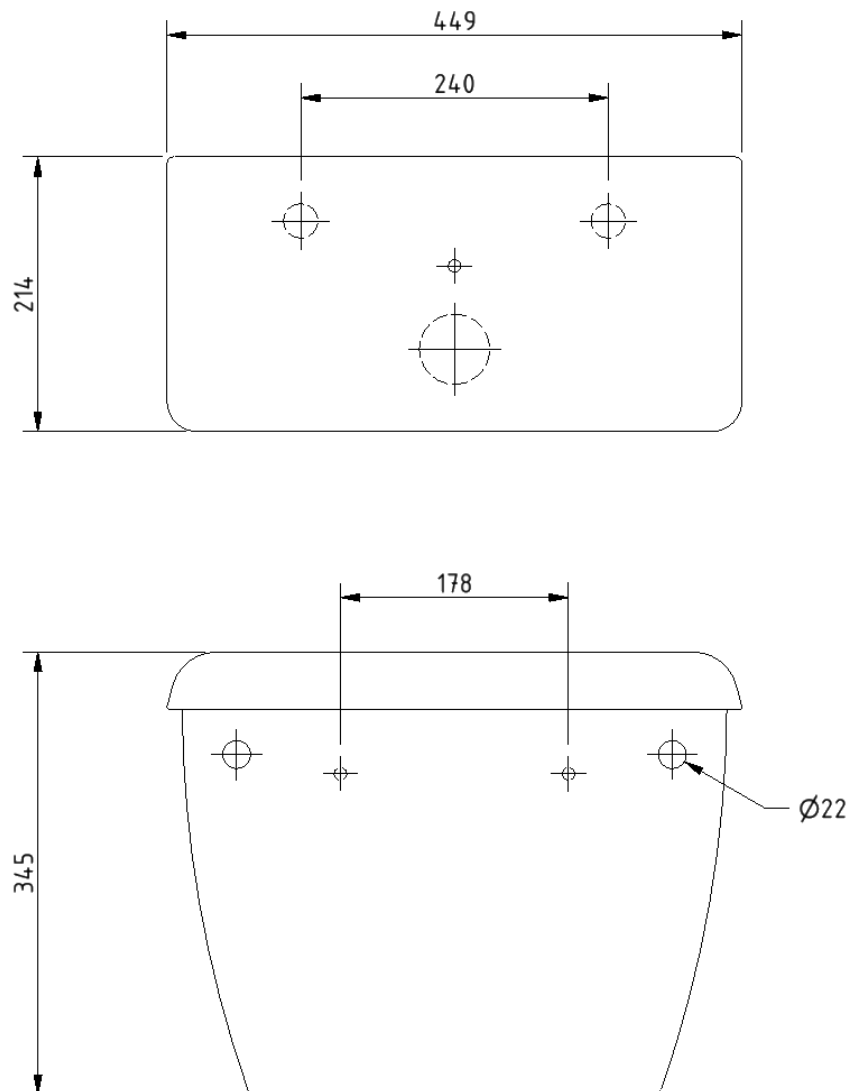
**WH**  
White (RAL 9016)

### Product description

### Product code

Low level cistern for box rim pan	NY01-SW-21090-WH
Low level cistern with lockable lid for box rim pan	NY01-SW-21099-WH

Dimensions (mm)



## Toilet seat, ring only, stainless steel pillar hinge



### Product details

**Warranty:** 2 years

**Max load:** 150 kg

**Doc M compliant:** Yes

**Suitable for wet areas:** Yes

### Features

- Complies with Part M of the Building Regulations
- Anti-bacterial, strong and durable Duroplast seat
- Ergonomic and comfortable shape
- Stainless steel hinge (bottom fix as standard)  
Additional hinge pack to convert to top fix: NY-TOPFIXHINGE
- Adjustable locating buffers
- Fits close coupled, low level, back to wall and wall hung pans

### Finish options



**DB**  
Dark Blue (RAL 5011)



**DG**  
Dark Grey (RAL 7016)



**GY**  
Grey (RAL 7005)



**WH**  
White (RAL 9016)

### Product description

Toilet seat, ring only, stainless steel pillar hinge

### Product code

260015/\*\*

Replace \*\* with 2-character short code for chosen finish.  
e.g., 260015/DB

Dimensions (mm)

