

Doc M rail only pack with exposed fixing steel grab rails and back rest



Product details

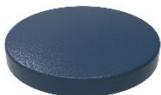
Warranty:	See individual products
Max load:	See individual products
Doc M compliant:	Yes
Suitable for wet areas:	No

Features

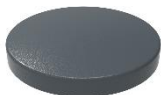
- Complies with Part M of the Building Regulations
- Simple one box solution

Finish options

Powder Coated



DB
Dark Blue (RAL 5011)



DG
Dark Grey (RAL 7016)



GY
Grey (RAL 7006)



WH
White (RAL 9016)

Product description

Rail only Doc M toilet pack, steel, exposed fixings, back rest rail

Product code

BLLDMT-0/**

Replace ** with 2-character short code for chosen finish (Powder Coated).
e.g., BLLDMT-0/DB

Pack contents

- 5 x 600mm coated steel grab rails with exposed fixings
- 1 x 800mm coated steel hinged support rail with toilet roll holder
- 1 x 270mm coated steel back rest rail and pad with exposed fixing

Dimensions (mm)

See individual products

Round flange steel grab rail with concealed fixings, 35mm diameter tube



Product details

Warranty: 2 years

Max load: 200 kg

Doc M compliant: Yes

Suitable for wet areas: No

Features

- Complies with Part M of the Building Regulations
- Robust steel construction

Finish options

Powder Coated



DB
Dark Blue (RAL 5011)



DG
Dark Grey (RAL 7016)



GY
Grey (RAL 7005)



WH
White (RAL 9016)

Product description

Product code

Round flange grab rail, steel, exposed fixings, 35mm diameter, 305mm

GR-12/35/**

Round flange grab rail, steel, exposed fixings, 35mm diameter, 455mm

GR-18/35/**

Round flange grab rail, steel, exposed fixings, 35mm diameter, 610mm

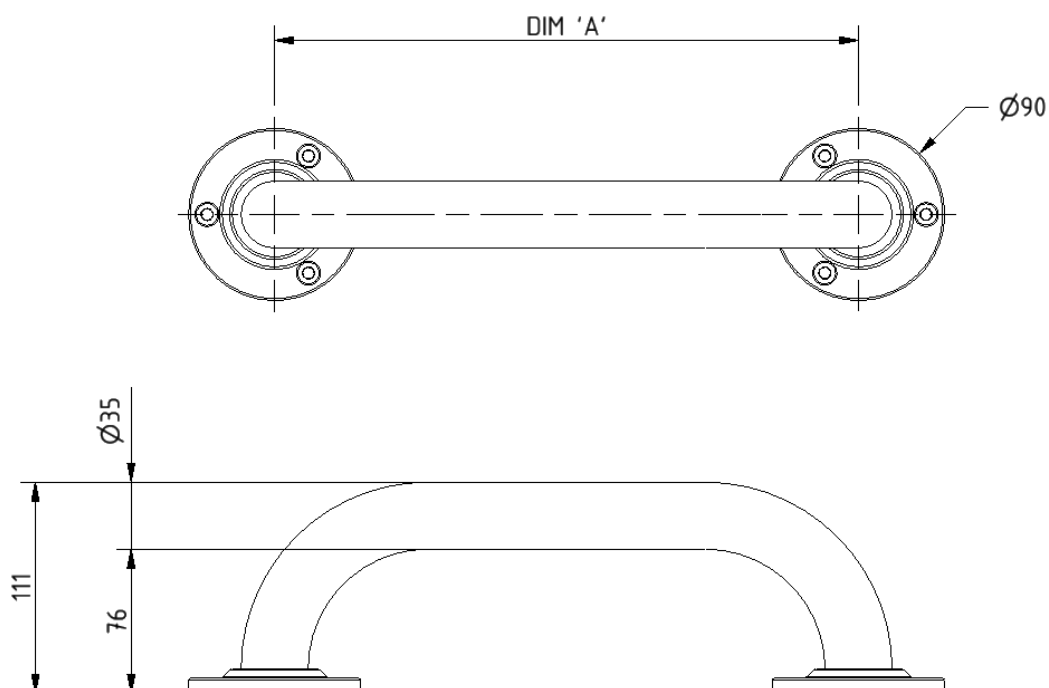
GR-24/35/**

Round flange grab rail, steel, exposed fixings, 35mm diameter, 900mm

GR-36/35/**

Replace ** with 2-character short code for chosen finish (Powder Coated)
e.g., GR-12/35/DB

Dimensions (mm)



PRODUCT CODE	GR-12/35/**	GR-18/35/**	GR-24/35/**	GR-36/35/**
DIM 'A'	305	455	610	900

Lift and lock steel hinged support rail with toilet roll holder



Product details

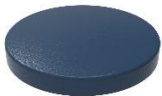
Warranty:	2 years
Max load:	115 kg
Doc M compliant:	Yes (800mm variant only)
Suitable for wet areas:	No

Features

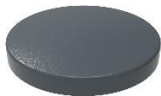
- Lift and lock folding mechanism
- Integral toilet roll holder
- Robust steel construction
- Complies with Part M of the Building Regulations (800mm variant only)

Finish options

Powder Coated



DB
Dark Blue (RAL 5011)



DG
Dark Grey (RAL 7016)



GY
Grey (RAL 7006)



WH
White (RAL 9016)

Product description

Product code

Trombone lift and lock hinged support rail, steel, toilet roll holder, 550mm

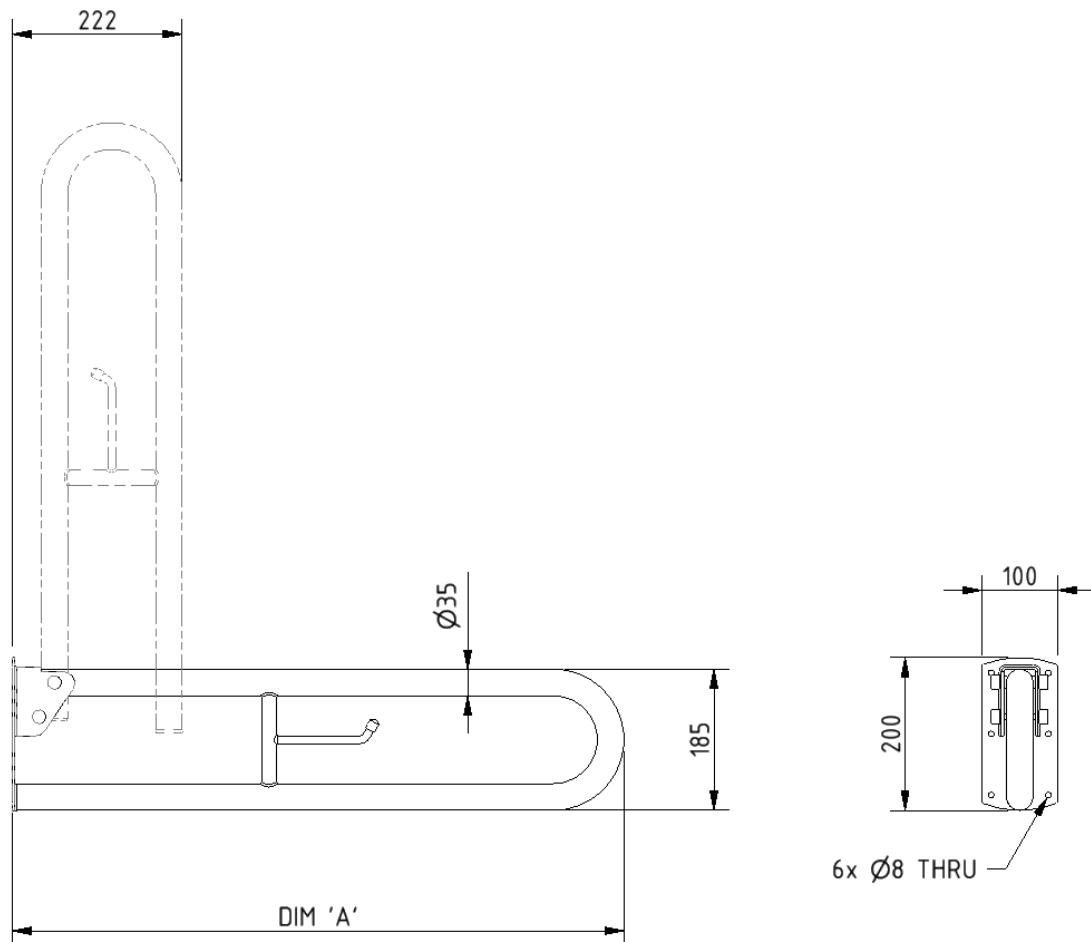
112055/**

Trombone lift and lock hinged support rail, steel, toilet roll holder, 800mm

DDGR-B/**

Replace ** with 2-character short code for chosen finish (Powder Coated).
e.g., DDGR-B/DB

Dimensions (mm)



PRODUCT CODE	112055/**	DDGR-B/**
DIM 'A'	550	800

Steel back rest with white pad, 270mm projection



Product details

Warranty: 2 years

Max load: N/A

Doc M compliant: Yes

Suitable for wet areas: No

Features

- Complies with Part M of the Building Regulations
- Robust steel construction
- Durable wipe clean polyurethane pad
- Closed cell polyurethane construction for maximum hygiene and comfort
- Saddle clips for fixing pad to rail

Finish options

Powder Coated



DB
Dark Blue (RAL 5011)



DG
Dark Grey (RAL 7016)



GY
Grey (RAL 7005)



WH
White (RAL 9016)

Product description

Back rest rail with white pad, steel, 270mm projection, exposed fixings

Product code

BR-270/**

Replace ** with 2-character short code for chosen finish (Powder Coated).
e.g., BR-270/DB

Dimensions (mm)

