

Rail only Doc M toilet pack with concealed fixing steel grab rails and back rest rail



Product details

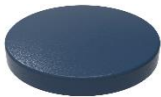
Warranty:	See individual products
Max load:	See individual products
Doc M compliant:	Yes
Suitable for wet areas:	No

Features

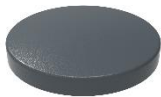
- Complies with Part M of the Building Regulations
- Concealed fixing grab rails and back rest
- Simple one box solution

Finish options

Powder Coated



DB
Dark Blue (RAL 5011)



DG
Dark Grey (RAL 7016)



GY
Grey (RAL 7006)



WH
White (RAL 9016)

Product description

Rail only Doc M toilet pack, steel, concealed fixings, back rest rail

Product code

230004/**

Replace ** with 2-character short code for chosen finish (Powder Coated).
e.g., 230004/DB

Pack contents

- 5 x 600mm coated steel grab rails with concealed fixings
- 1 x 800mm coated steel hinged support rail with toilet roll holder
- 1 x 270mm coated steel back rest rail and pad with concealed fixings

Dimensions (mm)

See individual products

D-Bar grab rail, steel, with concealed fixings, 35mm diameter tube



Product details

Warranty: 2 years

Max load: 200 kg

Doc M compliant: Yes

Suitable for wet areas: No

Features

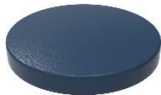
- Complies with Part M of the Building Regulations
- Robust steel construction
- Concealed Fixing Grab Rail

Finish options

Powder Coated



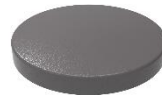
WH
White (RAL 9016)



DB
Dark Blue (RAL 5011)



DG
Dark Grey (RAL 7016)



GY
Grey (RAL 7005)

Product description

Product code

Round flange grab rail, steel, concealed fixings, 35mm diameter, 300mm

G1235C/**

Round flange grab rail, steel, concealed fixings, 35mm diameter, 450mm

G1835C/**

Round flange grab rail, steel, concealed fixings, 35mm diameter, 600mm

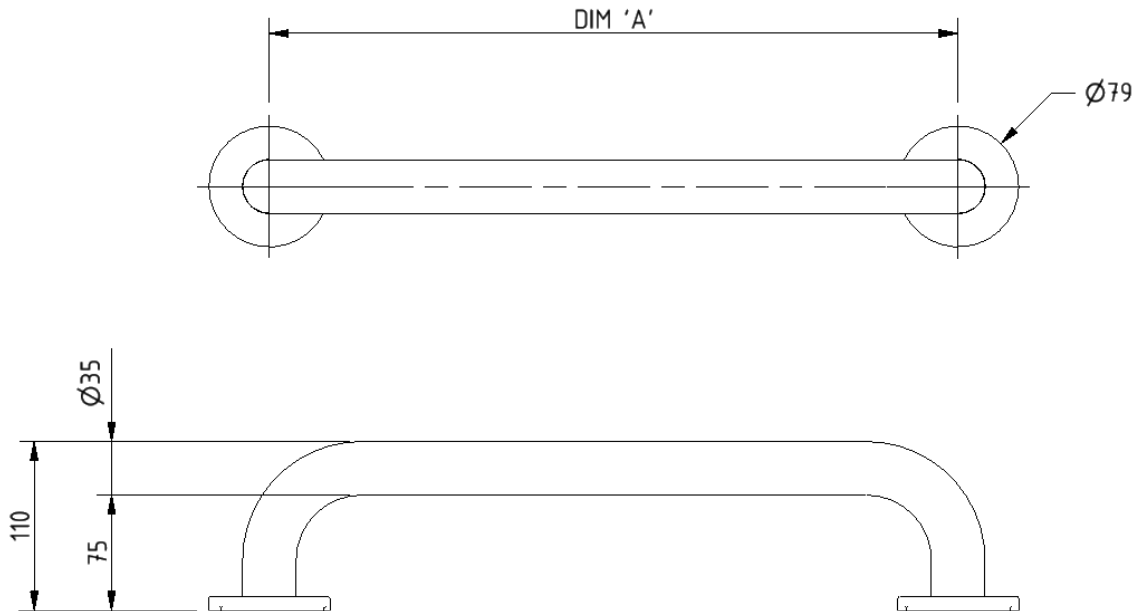
G2435C/**

Round flange grab rail, steel, concealed fixings, 35mm diameter, 900mm

G3635C/**

Replace ** with 2-character short code for chosen finish (Powder Coated).
e.g., G1235C/WH

Dimensions (mm)



PRODUCT CODE	G1235C/**	G1835C/**	G2435C/**	G3635C/**
DIM 'A'	300	450	600	900

Lift and lock steel hinged support rail with toilet roll holder



Product details

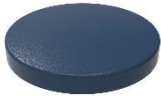
Warranty:	2 years
Max load:	115 kg
Doc M compliant:	Yes (800mm variant only)
Suitable for wet areas:	No

Features

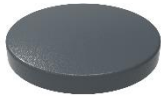
- Lift and lock folding mechanism
- Integral toilet roll holder
- Robust steel construction
- Complies with Part M of the Building Regulations (800mm variant only)

Finish options

Powder Coated



DB
Dark Blue (RAL 5011)



DG
Dark Grey (RAL 7016)



GY
Grey (RAL 7006)



WH
White (RAL 9016)

Product description

Product code

Trombone lift and lock hinged support rail, steel, toilet roll holder, 550mm

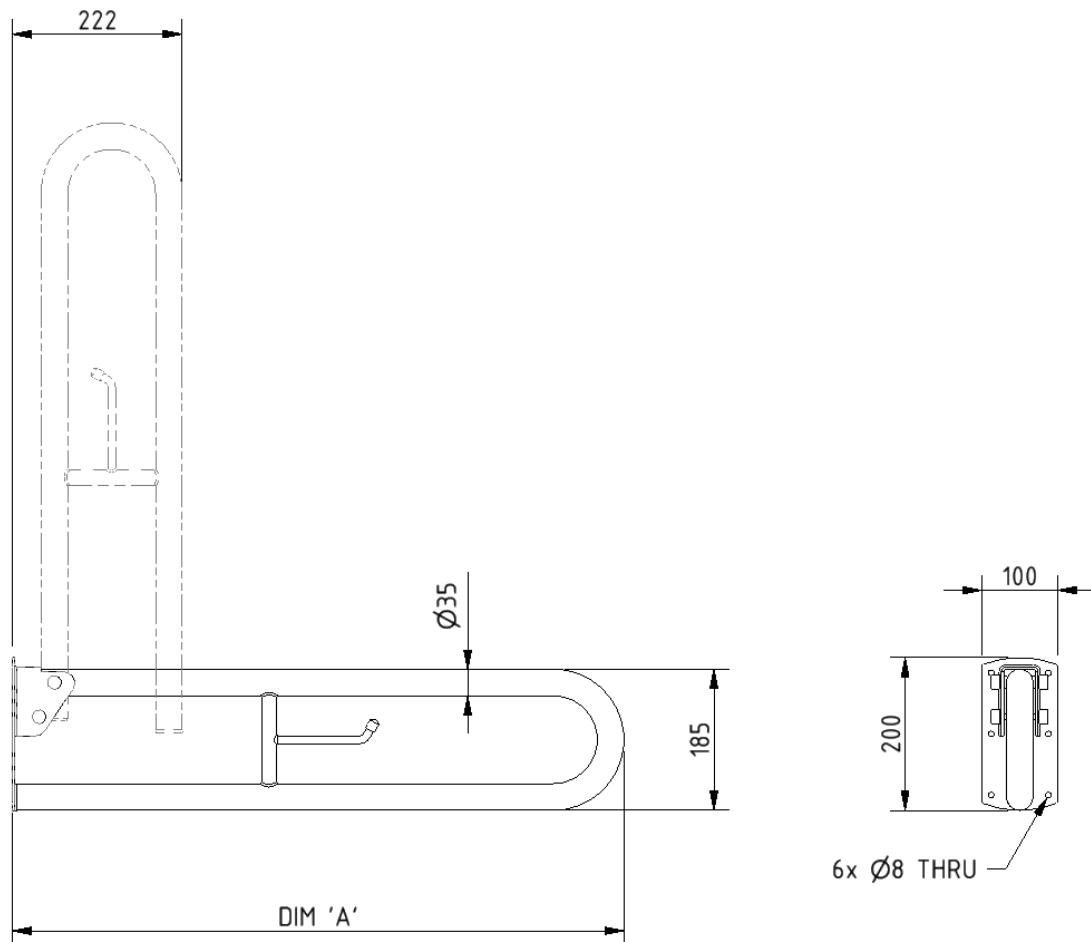
112055/**

Trombone lift and lock hinged support rail, steel, toilet roll holder, 800mm

DDGR-B/**

Replace ** with 2-character short code for chosen finish (Powder Coated).
e.g., DDGR-B/DB

Dimensions (mm)



PRODUCT CODE	112055/**	DDGR-B/**
DIM 'A'	550	800

Steel back rest rail with concealed fixings and white pad, 270mm projection



Product details

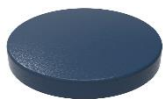
Warranty:	2 Years
Max load:	N/A
Doc M compliant:	Yes
Suitable for wet areas:	No

Features

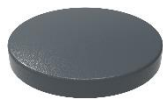
- Complies with Part M of the Building Regulations
- Robust steel construction
- Durable wipe clean closed cell polyurethane pad for cleanliness and comfort
- Saddle clips for fixing pad to rail
- Concealed fixings

Finish options

Powder Coated



DB
Dark Blue (RAL 5011)



DG
Dark Grey (RAL 7016)



GY
Grey (RAL 7006)



WH
White (RAL 9016)

Product description

Product code

Back rest rail with white pad, steel, 270mm projection, concealed fixings

BR-270C/**

Replace ** with 2-character short code for chosen finish (Powder Coated).
e.g., BR-270C/DB

Dimensions (mm)

