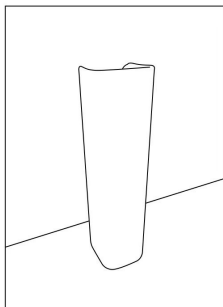
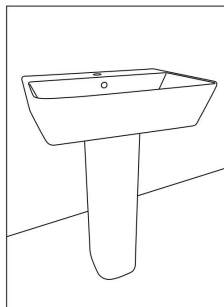


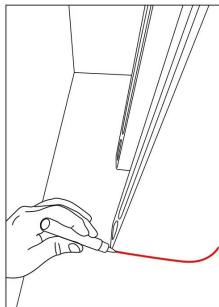
Basin & pedestal installation instructions



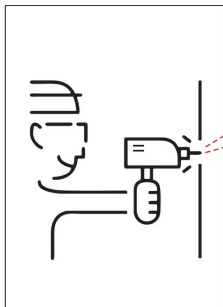
1, put the pedestal on a properly position.



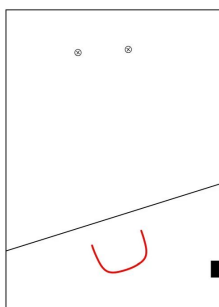
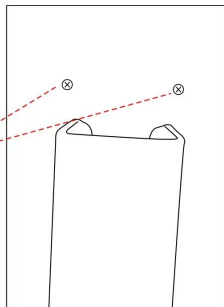
2, put basin on pedestal and adjusting a properly position.



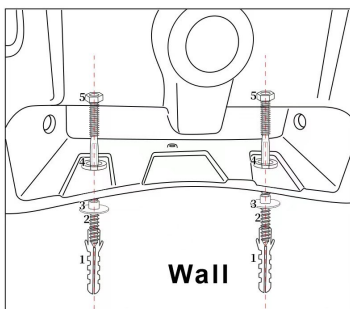
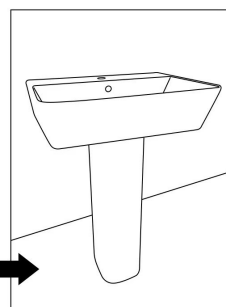
3, using a pen to mark the basin wall huge holes positions on wall, and pedestal install position line on floor.



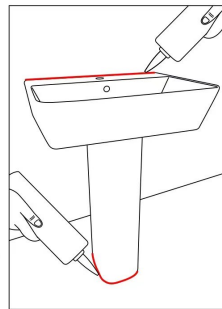
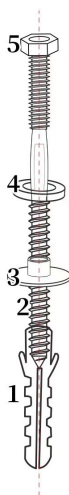
4, move away the basin and pedestal, drilling holes as mark track on wall.



5, move back pedestal and basin to original position.



6, install screw with basin.



7, using glass cement to seal gap between basin and wall, sealing gap between pedestal and floor.