

original harosecur Strip

The flexible
installation tape for
sanitary ceramics.

How to do it:

The surface of the sanitary objects to be bonded must be dry and free of dust and grease.



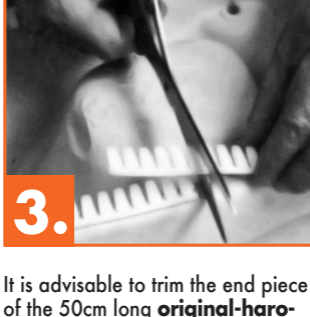
1.

Remove the protective paper at the beginning from the closed edge sidewise and then lengthwise.



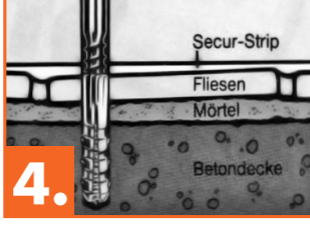
2.

Now stick the **original-harosecur-Strip**, with distance of approx. 2 mm to the outer edge, on the mounting surface of the ceramic object. The practical serration of the **original-harosecur-Strip** allows to follow any ceramic profile.



3.

It is advisable to trim the end piece of the 50cm long **original-harosecur-Strip** with sharp scissors to the right length.



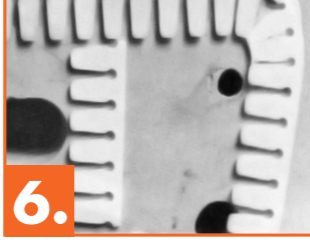
4.

The balancing effect of the **original-harosecur-Strip** is shown in the graphics.



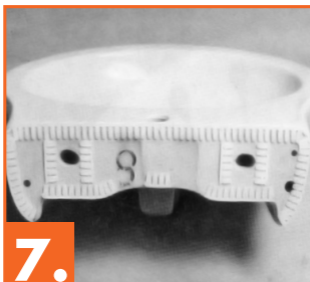
5.

Even curves with a small radius can be easily bonded.



6.

For very small radii, one or more teeth can be cut off and the **original-harosecur-Strip** can be mitred on edges.



7.

Preparation of the installation of washbasins: All edges and important contact surfaces should be bonded with the **original-harosecur-Strip**.

After the successful installation, the remaining joint can be filled with a silicone sealant in order to receive an optimal installation result.

To cope with uneven surfaces and walls, the strips can also be bonded on top of one another relevant short strips.

The strip offers many other possible applications – from height adjustment to the installations of bath tubs.

Content: 3 x 50 cm

Article-No. 40500

UK Distributor:

Cramer UK Ltd.

Phone/Fax 01934-713377

david@crameruk.com

Check out our full range of Plumbing Supplies

Plumbing wastes / Plumbing traps

Plumbing Consumables

Plumbing Tools

Toilet Fittings

Brassware

Valves

Plumbing Fittings

plumbworld
Big brands, small prices.