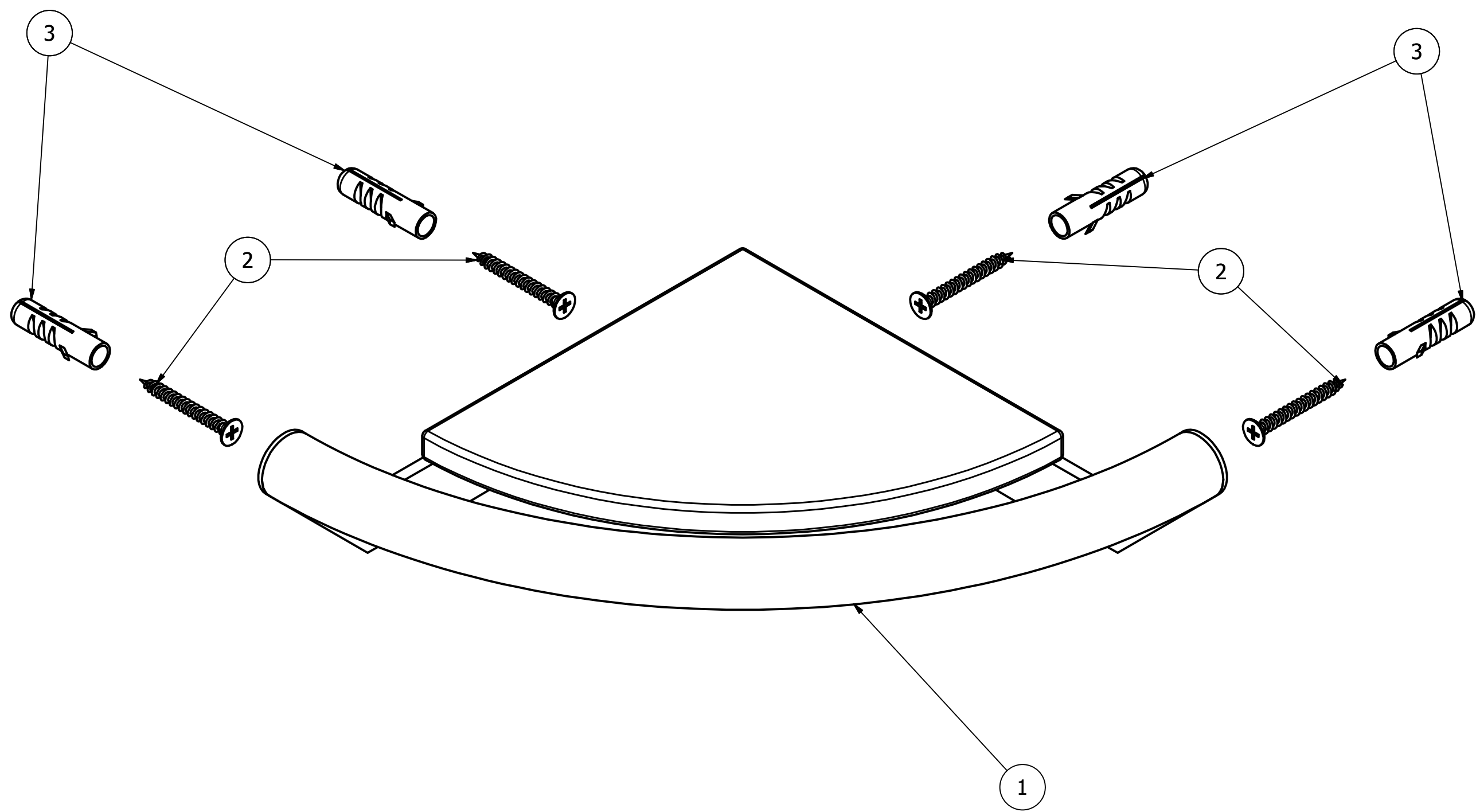


PARTS LIST		
ITEM	QTY	PART NUMBER
1	1	90 DEGREE SHELF
2	4	SCREWS
3	4	WALL PLUGS

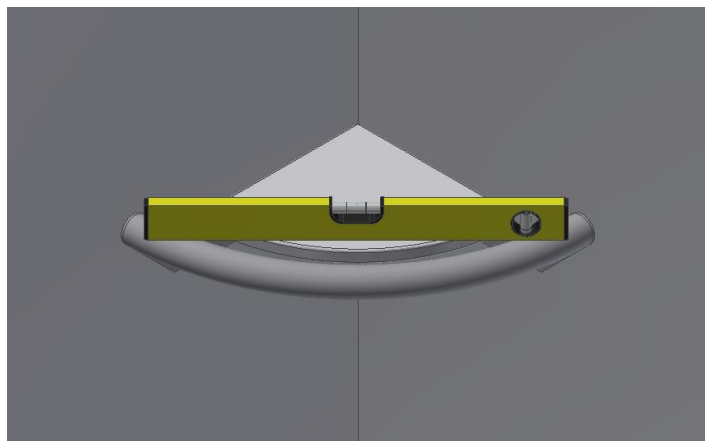
Installation guide for 2IN1001



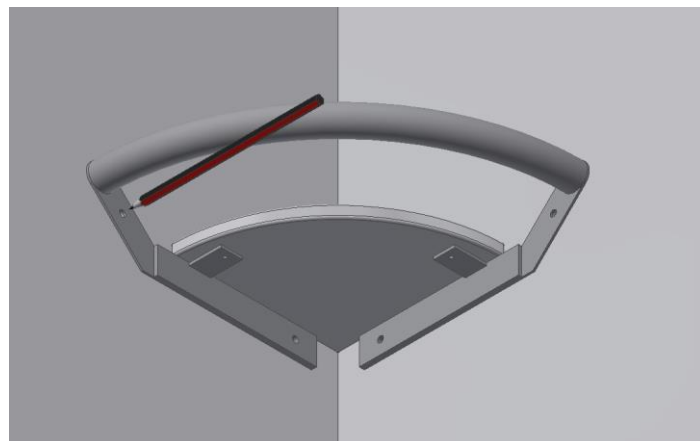
Installation guide for 2in1001

Use personal protection equipment where necessary

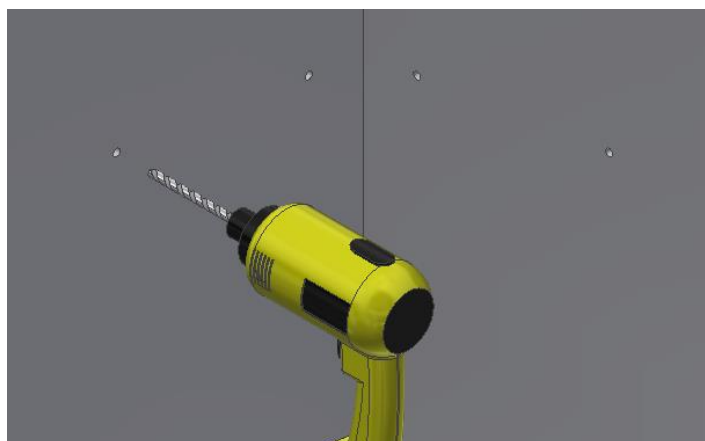
Ensure that the wall covering you are installing on is fully sealed and cured (tiles etc)



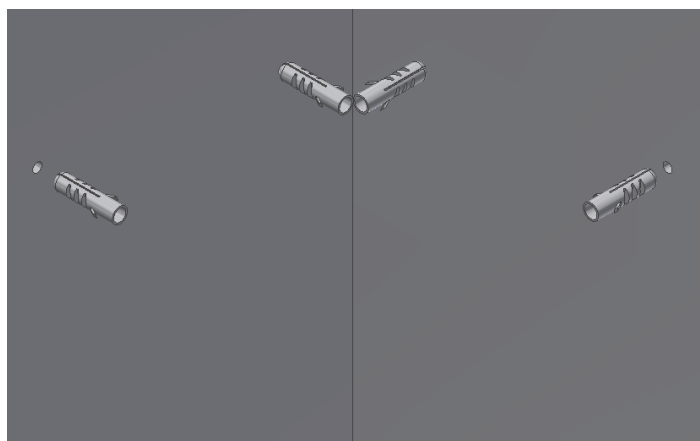
Place the shelf in a corner and at the desired height.
Make sure that it is square and level



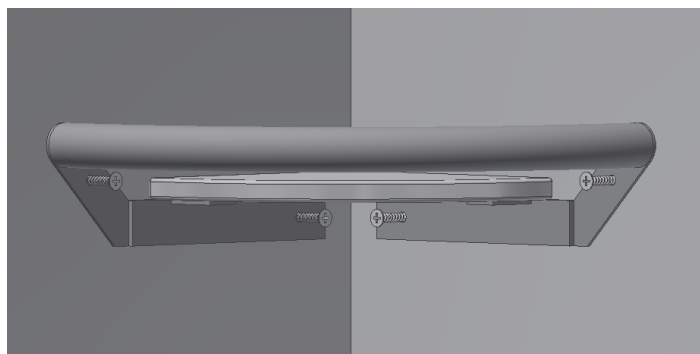
Mark the location of the holes onto the wall



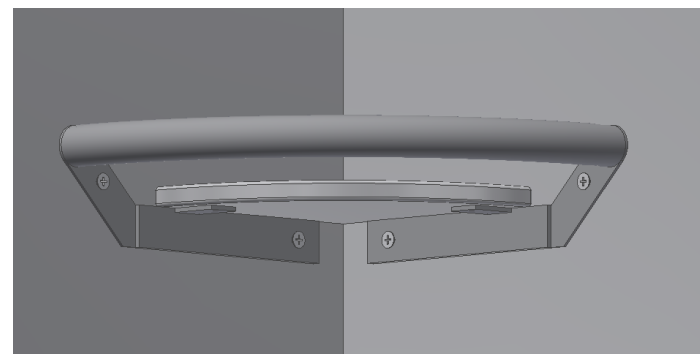
Using a suitable drill bit for the wall plugs and the wall,
drill holes for the wall plugs. Before drilling, check for
pipes and cables.



Insert the wall plugs into the holes



Place the shelf back into position



Screw the shelf in place

Check out our full range of Bathroom Accessories

Bathroom Accessory Sets

Heated Towel Rails

Bathroom Extractor Fans

Bathroom Lighting

Shower Seats

Grab Rails

Shower Curtains

Toilet Brushes

Bathroom Cleaning Products

Wall Mounted Bathroom Accessories

Robe Hooks

Bathroom Tumblers

Toilet Roll Holders

Soap Dishes

Towel Rings

Shower Caddies

Bathroom Mirrors

Standard Bathroom Mirrors

LED Bathroom Mirrors

Shaving Mirrors

plumbworld
Big brands, small prices.