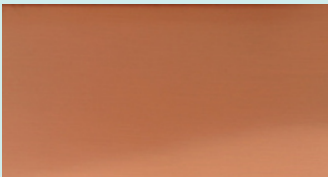


BC DESIGNS BEAUTIFUL COPPER BATHS ARE HANDCRAFTED USING TRADITIONAL TECHNIQUES.

Each piece is hand made and every bath is a unique work of art completely different from one to the next. All of the curves and bends are made with no more than a hammer, an experienced eye and a strong arm.

Variations and undulations will occur which is why each piece is distinctive.

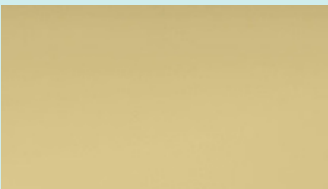
There will be blemishes, marks and small scratches in some areas and inevitably, due to the authentic characteristics of the material, surface textures will be visible.



POLISHED COPPER & BRASS FINISH - UNLACQUERED

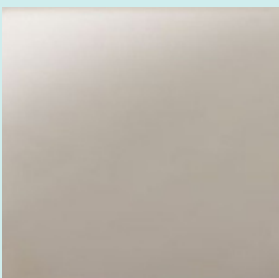
Routinely clean with warm soapy water and a nonabrasive cloth and dry immediately after use. Avoid dripping taps, sharp objects and the use of harsh chemicals.

Maintain the finish by re-applying a suitable wax seal (we recommend Renaissance Wax) regularly every 4-6 weeks depending on use. More usage will require more maintenance.



If the wax wears off and oxidisation develops on the copper surface, clean the bath with a fine metal cleaner, such as Autosol, and then re-apply the wax.

Plated Finishes



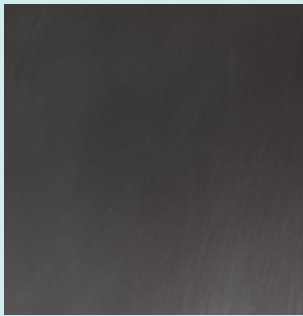
NICKEL

To keep the nickel finish, the wax seal should be maintained by regular reapplication. Do not use abrasive metal cleaner on nickel plated items as this could wear through the finish. A small amount of 'Peek' metal cleaner can be used on minor tarnishing.

WE ARE HERE TO HELP

For any questions regarding your copper bath please contact us on sales@bcdesigns.co.uk or 01206 827100

Plated Finishes



TIN - UNLACQUERED

Our Tin Boat bath does not require much maintenance - just use a Brillo Pad and warm soapy water



ANTIQUE COPPER - LACQUERED

Non abrasive cleaner or warm soapy water - do not use wire bristled brushes or corrosive chemicals



VERDIGRIS - LACQUERED

Non abrasive cleaner or warm soapy water - do not use wire bristled brushes or corrosive chemicals

WE ARE HERE TO HELP

For any questions regarding your copper bath please contact us on sales@bcdesigns.co.uk or 01206 827100