

AFTER CARE

To maintain the appearance of this hand spray, ensure that it is regularly cleaned only using a clean, soft damp cloth. A solution of warm water and a mild liquid detergent may be used where necessary, and then the fitting rinsed thoroughly and wiped dry. Abrasive cleaners, scouring cleaners and acid cleaners **must not be used** under any circumstances. All bath cleaning powders and liquids will damage the surface of your fitting even the non-scratch cleaners. Avoid contact with all solvents and any harsh household chemicals. You will damage the finish and void your guarantee.

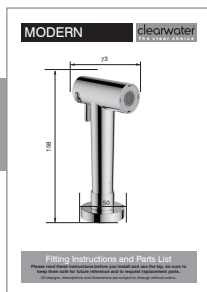
GUARANTEE AND LIABILITY

In the unlikely event that you should experience any defect in the material or workmanship of your hand spray within 5 years of purchase, we will replace the faulty part free of charge. Decorative surface finishes are guaranteed for one year from the date of purchase provided that our advise concerning care has been observed and no scouring agents have been used. This is provided that the hand spray has been used for normal domestic purposes in the UK and that the care, installation and maintenance instructions have been observed.

Scuff and scratches caused by normal wear and tear, improper installation or accidental damage are excluded from this guarantee.

You should retain a copy of your dated invoice as proof of purchase to validate any claims under this guarantee.

No other warranties, express or implied, are made, including merchantability or fitness for a particular purpose.



Please Keep Me Safe

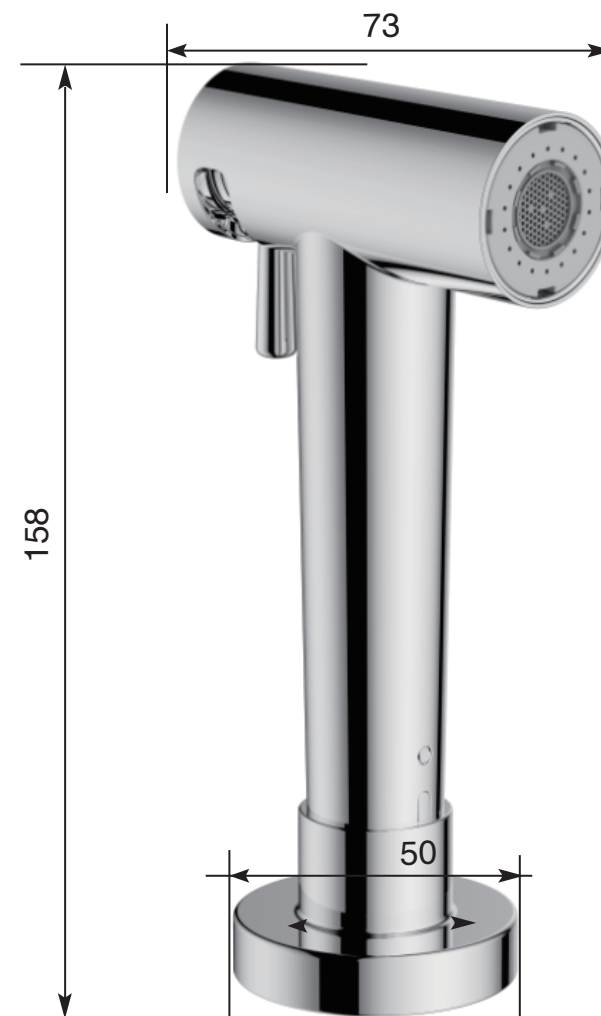
Spare Parts and Service



Contact: **Sterling**
Phone: **01684 299555**
Fax: **01684 290958**
Email: **sales@sterling.eu.com**
Website: **www.sterling.eu.com**

MODERN

clearwater®
The clear choice

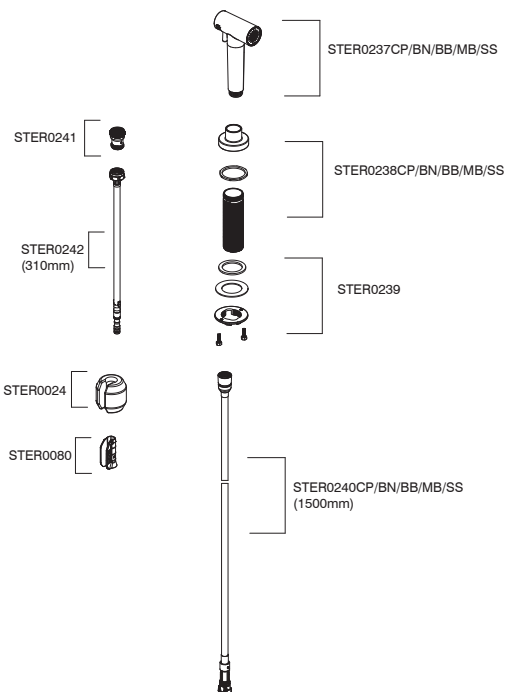


Fitting Instructions and Parts List

Please read these instructions before you install and use the product, be sure to keep them safe for future reference and to request replacement parts.

All designs, descriptions and dimensions are subject to change without notice.

MODERN MP10



In the unlikely event you find a part missing please contact our Customer Service Helpline on 01684 299555 for immediate despatch of part.

REMEMBER

Cold Or thermostatically controlled Mixed water only.

Maximum water supply pressure **2 bar (30PSI)**.

Over 2 bar (30PSI) install a pressure reducing valve.

Minimum water supply pressure **0.5 bar**.



It is very important that you read through the following instructions BEFORE you install and use the hand spray.

PREPARATION

We strongly recommend installing particle filters and isolation valves to both hot and cold feeds. This will help to prevent premature failure of valves and make any future maintenance easier. Flush the plumbing system before installing the hand spray. This is to avoid plumbing residues clogging the mesh of the aerated outlet, or possibly damaging the valve's washers. This is especially important where extensive plumbing work has been carried out. First shut off your water heating system then, with your mains stop cock closed, open the lowest hot and cold taps in the house and allow to run until the cold storage tank and pipes are empty. (The hot water storage cylinder always remains full).

INSTALLATION

Tools Required (Not Included)



Cross-Headed
Screwdriver



Adjustable
Spanner

Figure 1

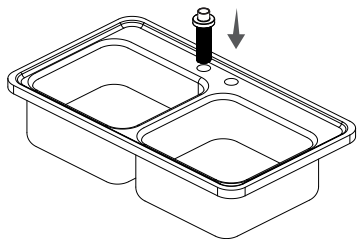


Figure 2

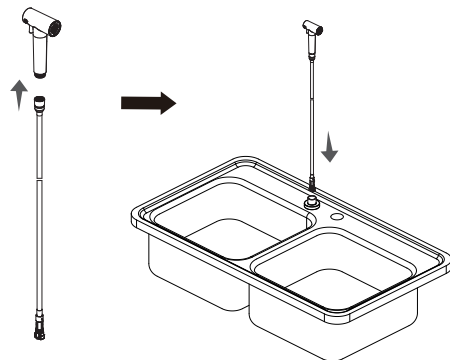


Figure 3

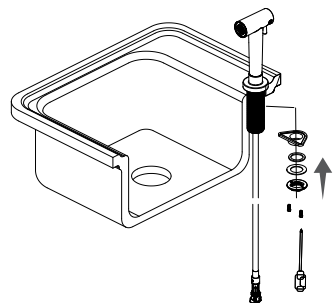


Figure 4

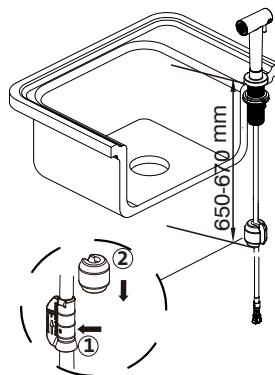


Figure 5

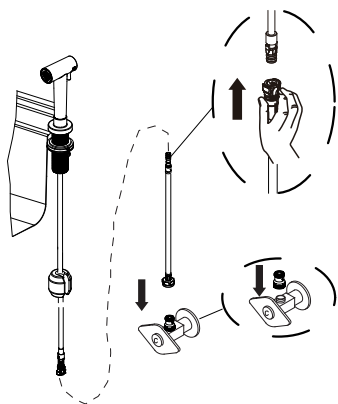
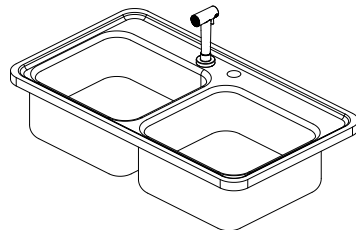


Figure 6



- Pass the threaded stud through the sink top from above and place the spray seat in position on the sink. **(Figure 1)**
- Connect the pull out hand spray and hose, and then pass the hose through the spray seat. **(Figure 2)**
- Slide the flat washer and fixing nut up the flexible hoses, and then screw the nut all the way up making sure the pull out hand spray is in the correct position. **(Figure 3)**
(Note: The thickness of sink > 35mm no need to use the mounting seat.)
- Attach the counterweight clamp (STER0080) tightly to the pull out flexible hose (STER0240). Make sure the distance from the counterweight clamp (STER0080) to the top of a sink is 650-670mm. Clamp the counterweight (STER0024) into the counterweight clamp and place it at the lowest point to maximize its pulling effect. Make sure that the hose is not resting on or catching anything in the cabinet. **(Figure 4)**
(Note: There must be enough space in the cabinet, The pull out hose cannot be bent it needs to be kept smooth)
- Connect the pressure reducing valve (STER0241) to the inlet. **(Figure 5)**
- Connect the black pull out flexible hose (STER0240) to the hose (STER0242). **(Figure 5)**
- Having first checked all new connections, turn on the mains stop cock, close all hand spray and as the system starts to refill check for leaks.

USE GUIDE

- Flow Mode Switch

