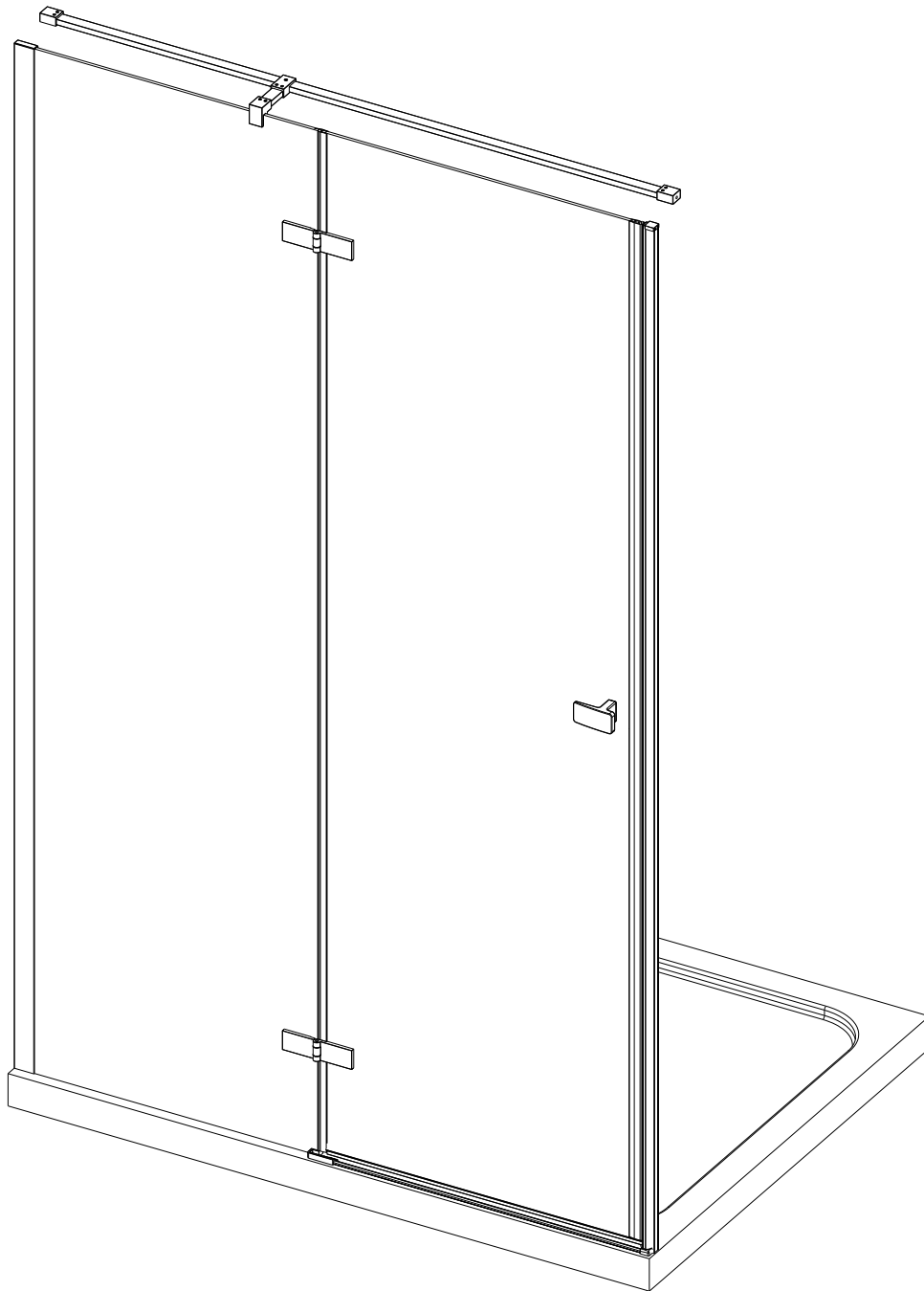


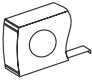


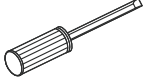
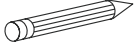
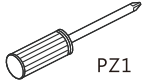
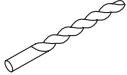
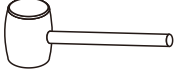




# 6mm FRAMELESS HINGE DOOR




## General Information

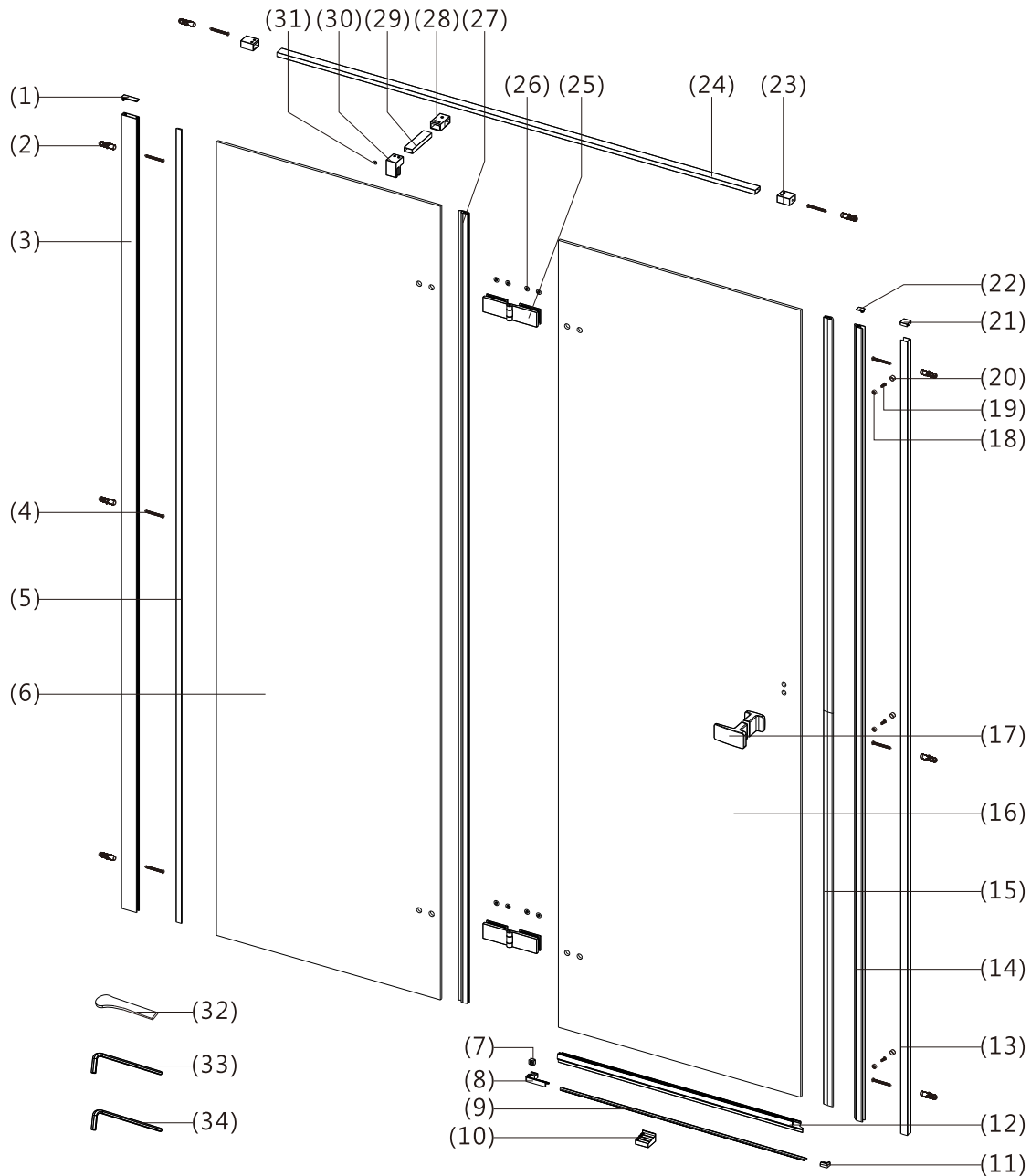
Please inspect this product upon delivery. Any missing parts or manufacturing defects must be reported immediately to the supplier. Damage or defects reported later will not be accepted. TAKE CARE WHEN HANDLING GLASS PARTS-AVOID HEAVY CONTACT BETWEEN THE GLASS EDGES AND ANY HARD SURFACE. Glass breakage claims will not be accepted after the product has been unpacked.

## TOOLS REQUIRED

DESCRIPTION	PART IMAGE	DESCRIPTION	PART IMAGE
Tape measure		Drill	
Spirit level		Flat-head Screwdriver	
Pencil		Cross head Screwdriver	
Ø6mm Drill bit		Mallet	
Ø3mm Drill bit		Silicone Sealant	
Ø4 Allen Key		Ø2 Allen Key	

 This product is heavy and may require two people to install.

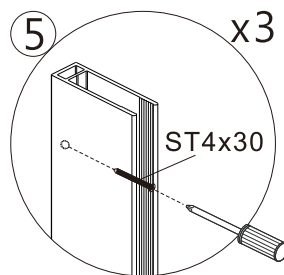
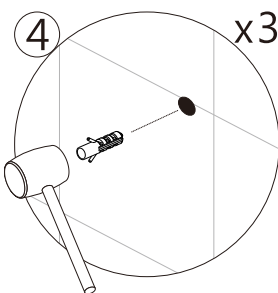
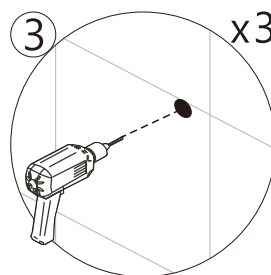
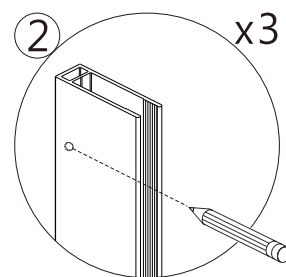
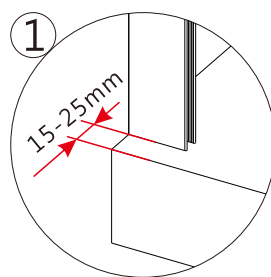
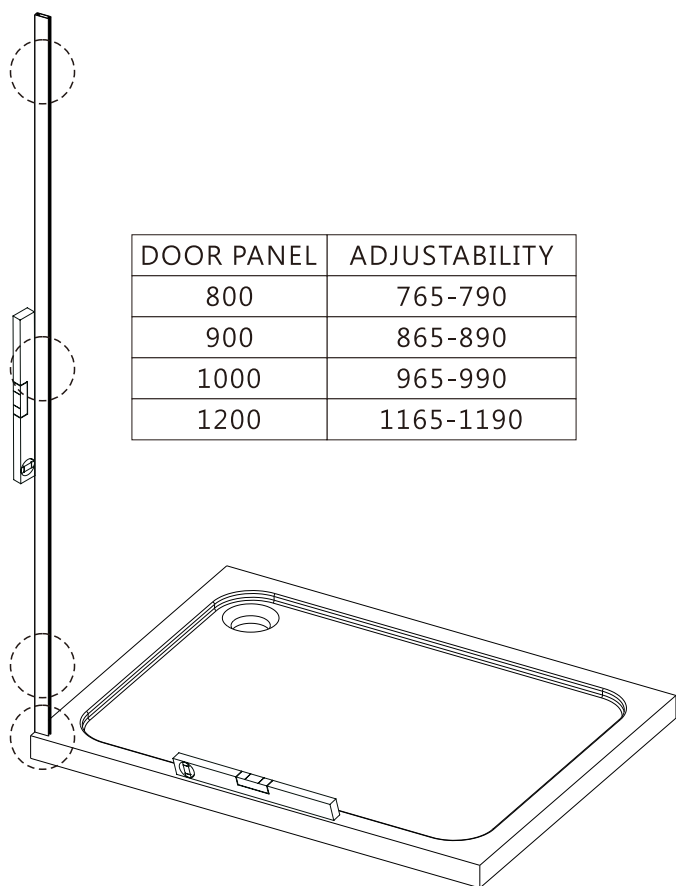
# ASSEMBLY INSTRUCTIONS - DRAWING



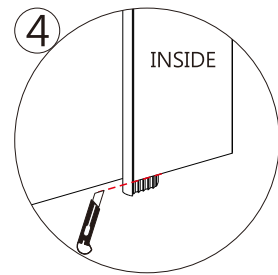
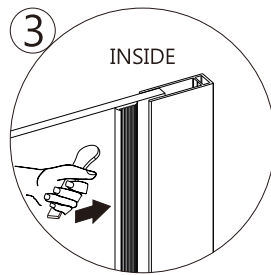
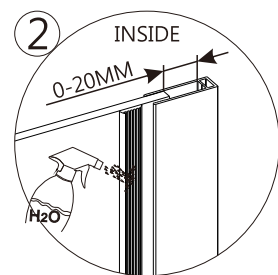
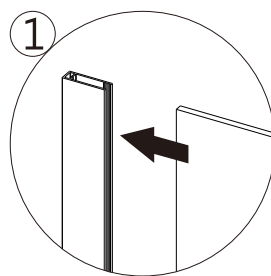
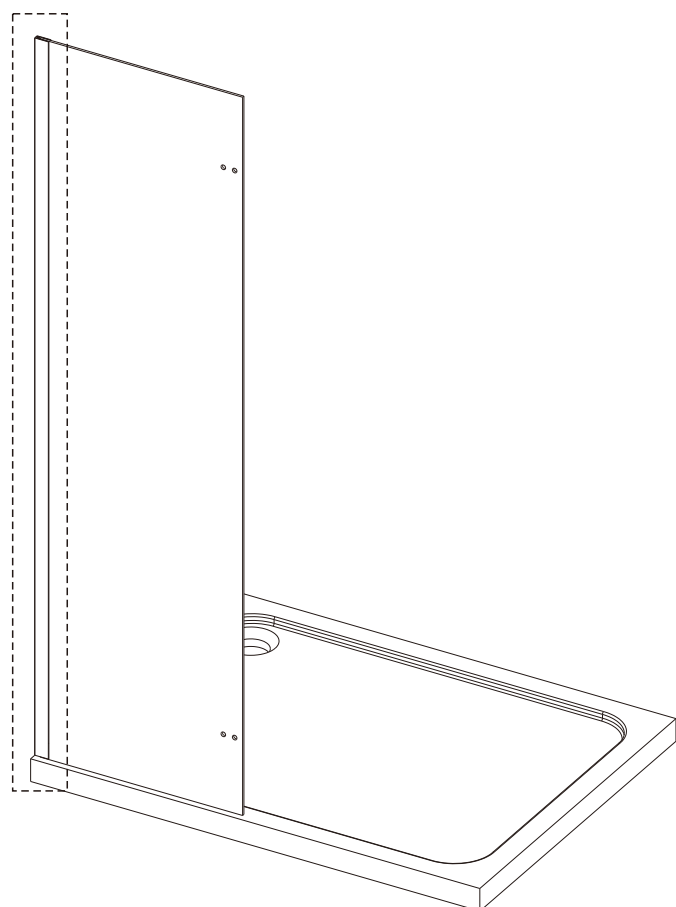
- (1) 1x Wall Profile Cover Cap A
- (2) 8x Wall Plugs
- (3) 1x Wall Profile A
- (4) 8x Screws 4x30
- (5) 1x Wedge Gasket Seal
- (6) 1x Fixed Panel
- (7) 1x Glass Clip
- (8) 2x Drip Strip End Cap A L&R
- (9) 1x Drip Strip
- (10) 1x Bottom Guide Block
- (11) 2x Drip Strip End Cap B L&R
- (12) 1x Bottom Seal
- (13) 1x Wall Profile B
- (14) 1x Upright Profile
- (15) 1x Magnetic Seal
- (16) 1x Moving Panel
- (17) 1x Handle

- (18) 3x Screw Cover Clips
- (19) 3x Screws ST4x12
- (20) 3x Screws Cover Caps
- (21) 2x Wall Profile Cover Cap B L&R
- (22) 1x Upright Profile Cover Cap
- (23) 2x Wall Brackets
- (24) 1x Top Bar Long
- (25) 2x Hinges
- (26) 8x Hinge Cover Caps
- (27) 1x Vertical Seal
- (28) 1x T Piece
- (29) 1x Top Bar Short
- (30) 1x Glass Clamp
- (31) 1x Glass Clamp Cover Cap
- (32) 1x Gasket Fitting Hand Tool
- (33) 1x Allen Key 2.5MM
- (34) 1x Allen Key 4.0MM

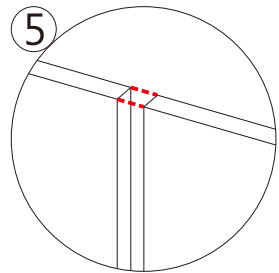
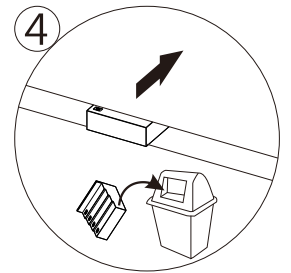
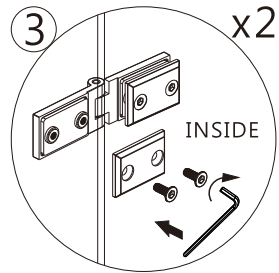
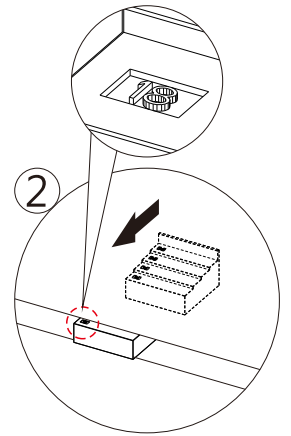
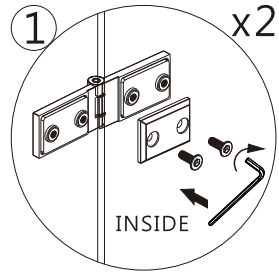
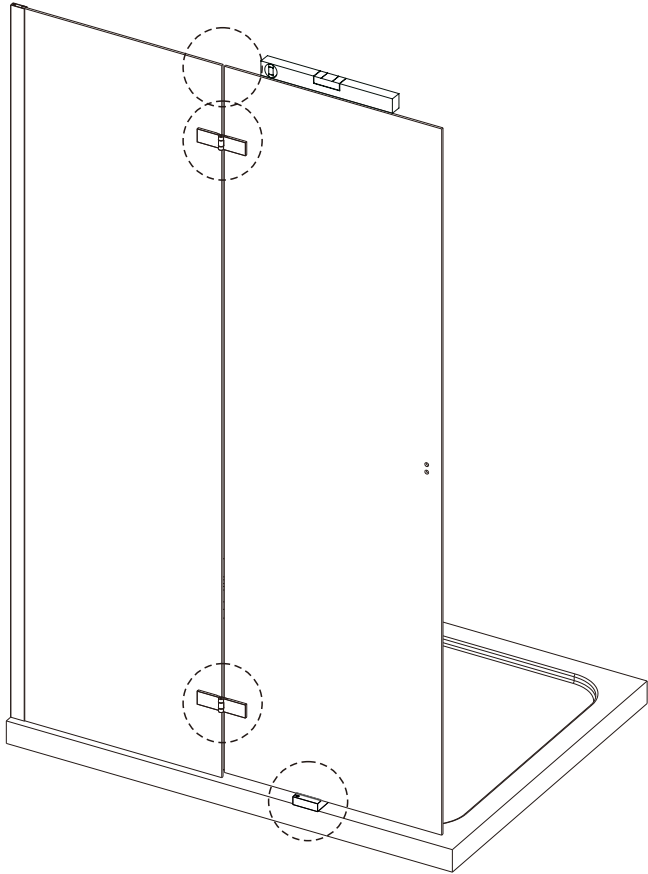
## STEP 1



## STEP 2

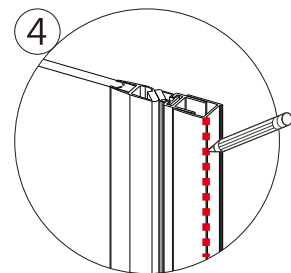
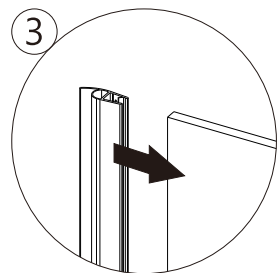
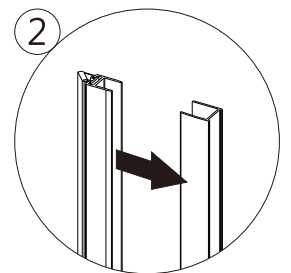
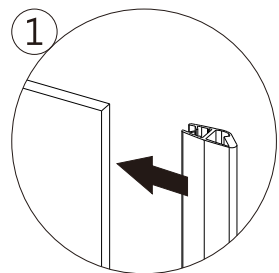
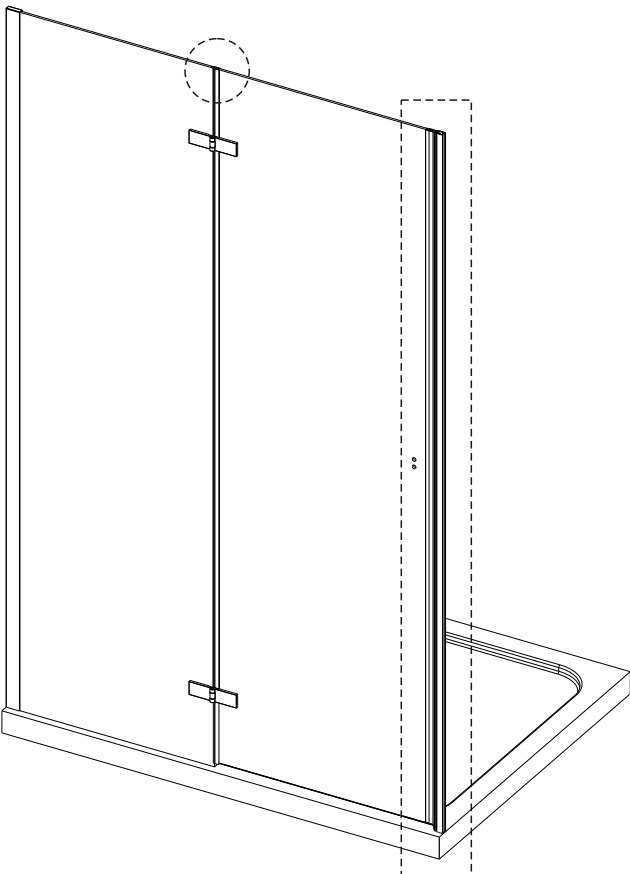


### STEP 3

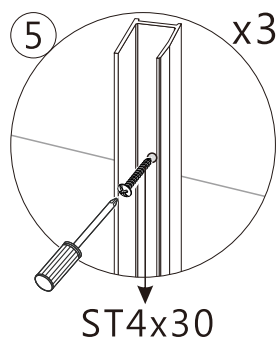
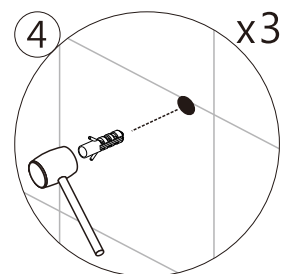
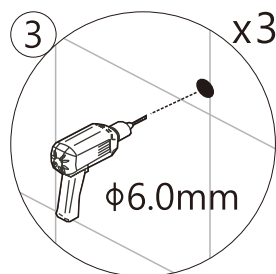
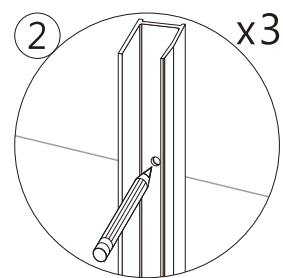
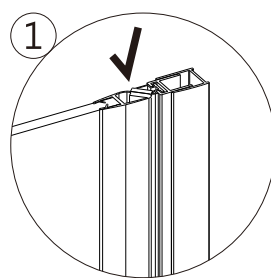
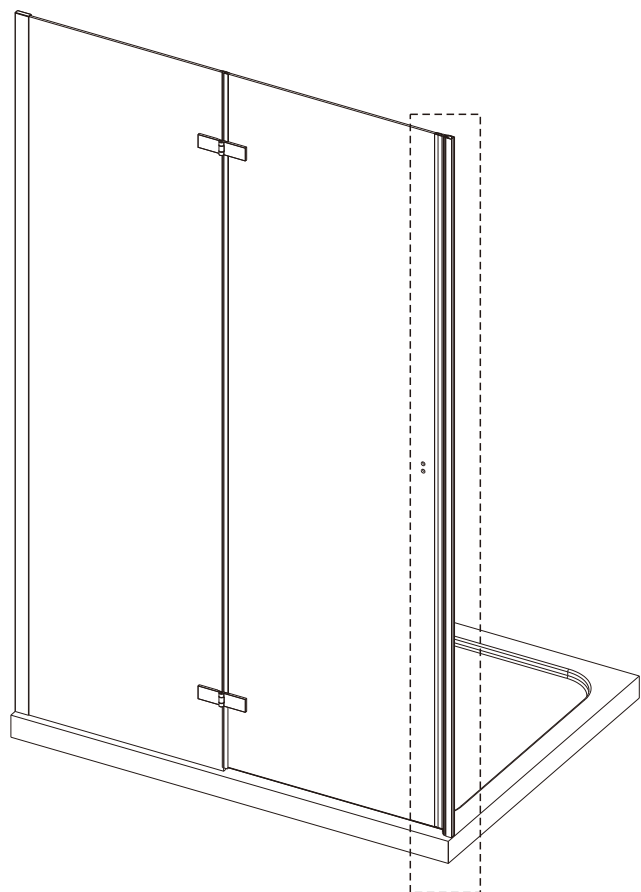


Note: After take off the support block , need person to hold the glass panel to keep not drop.

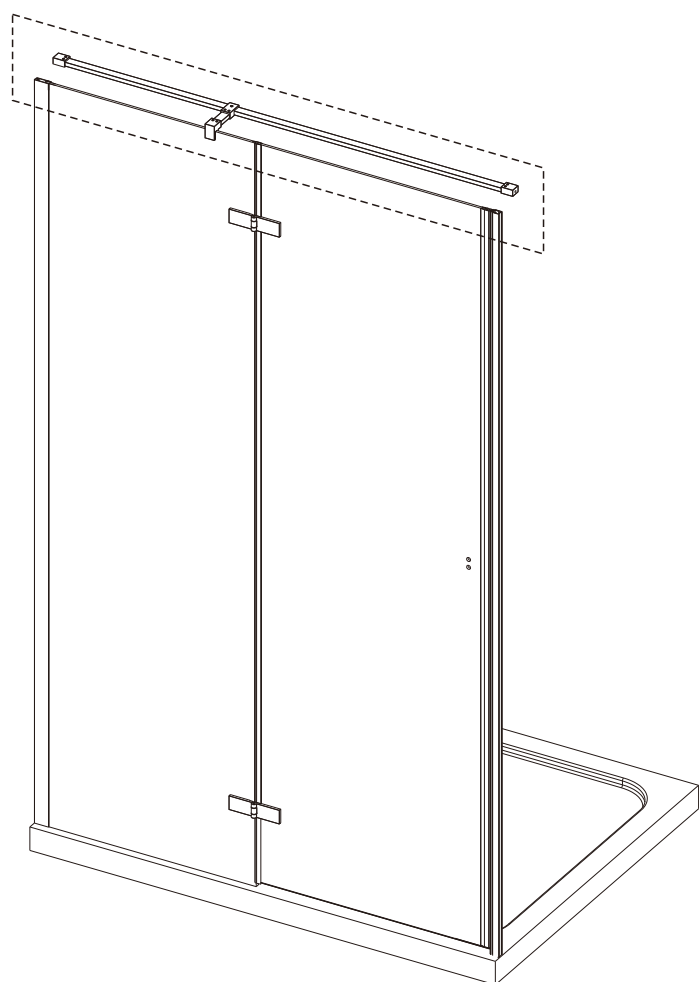
### STEP 4



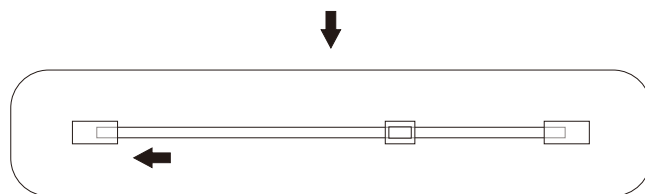
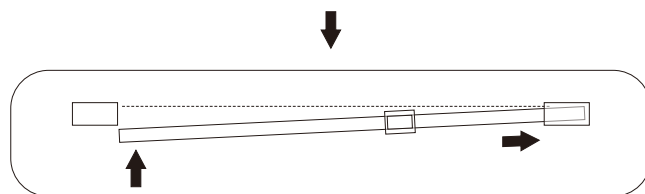
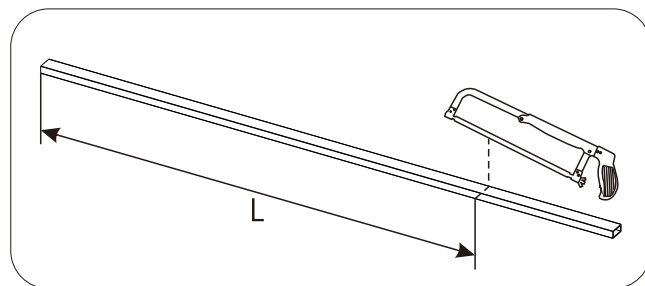
# STEP 5



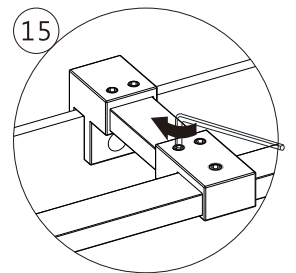
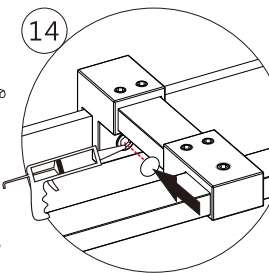
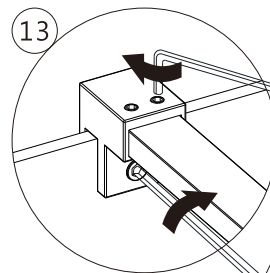
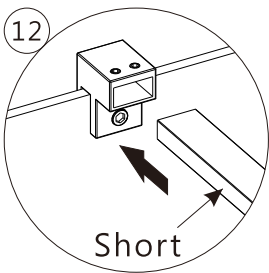
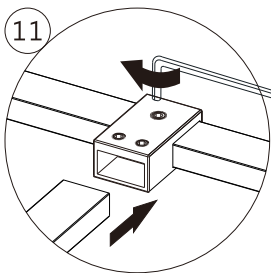
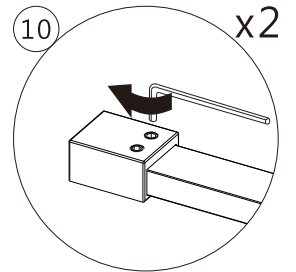
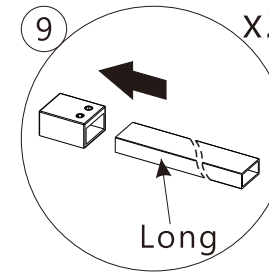
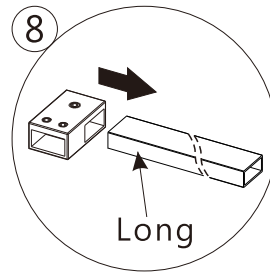
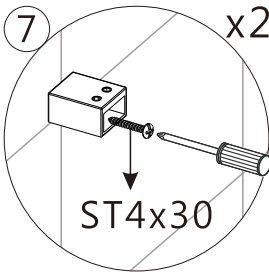
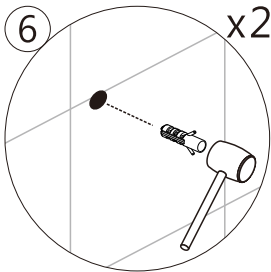
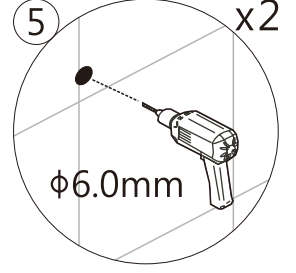
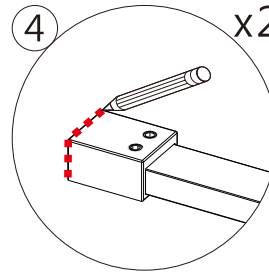
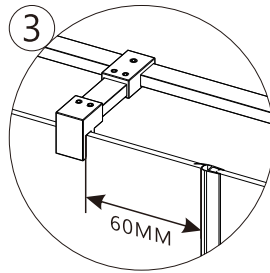
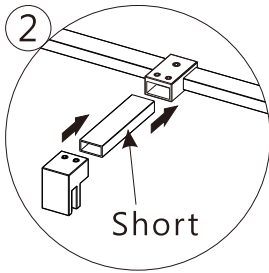
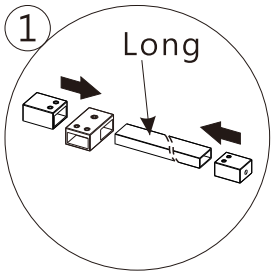
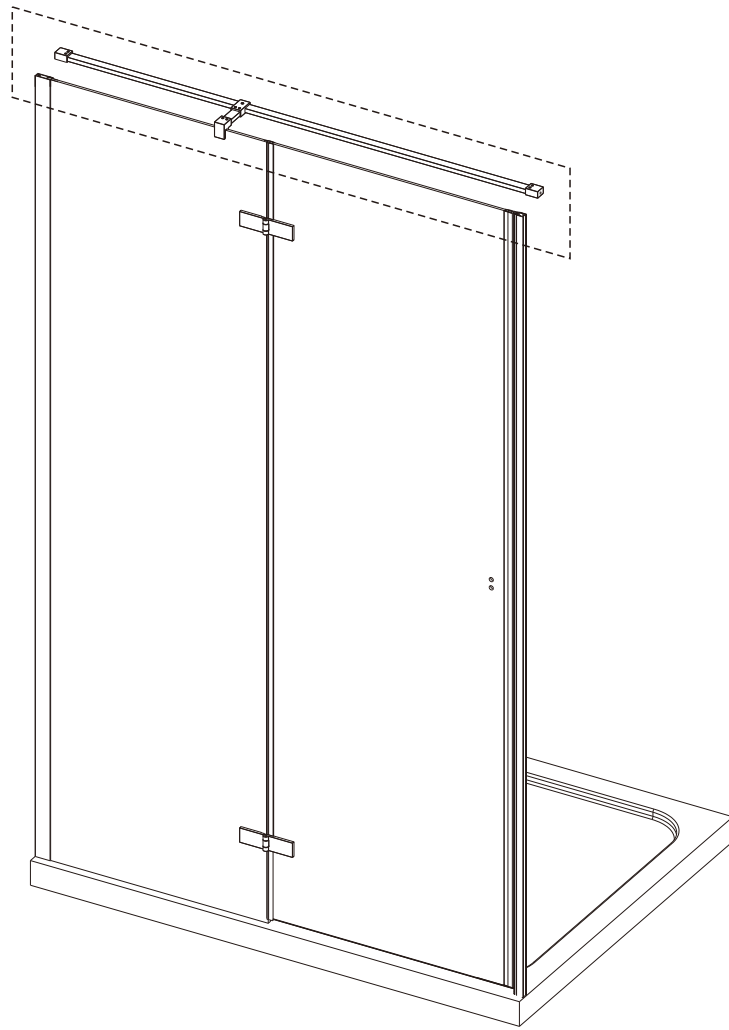
# STEP 6



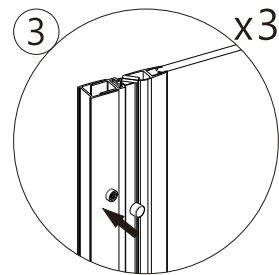
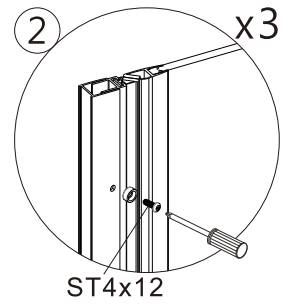
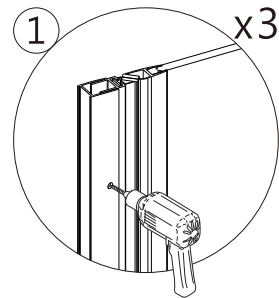
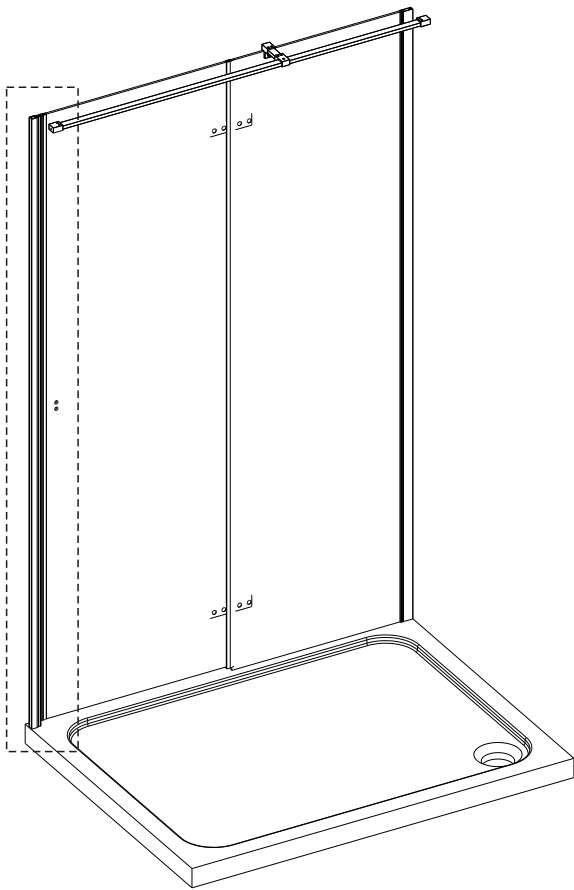
Product Side	L
1200*1900	1130-1155
1000*1900	930-955
900*1900	830-855
800*1900	730-755



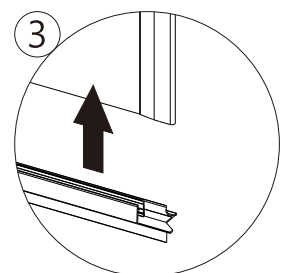
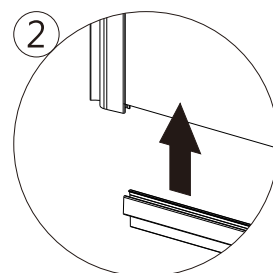
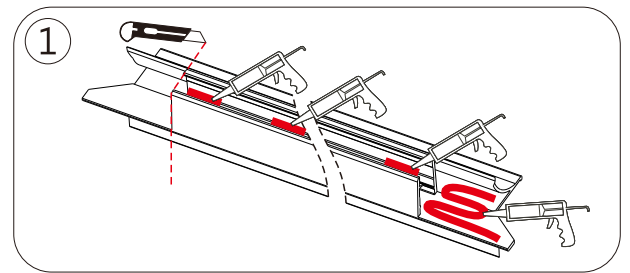
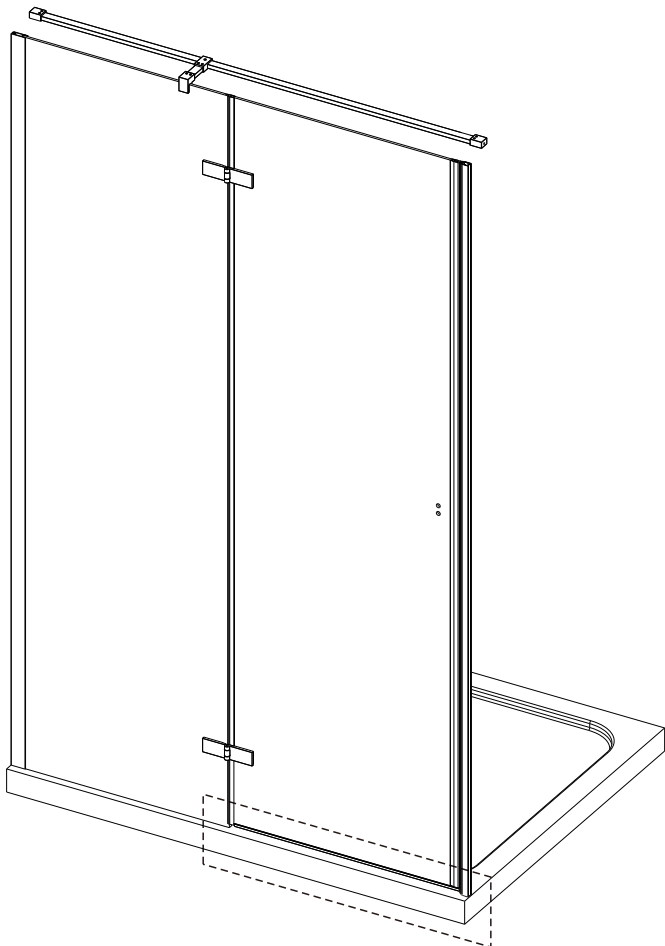
STEP 7



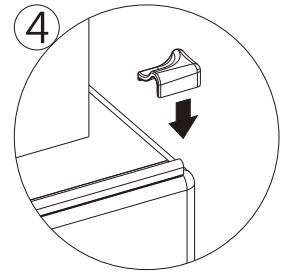
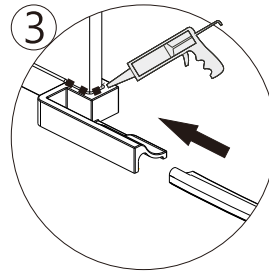
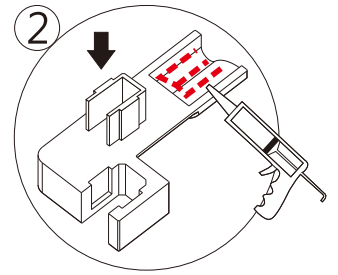
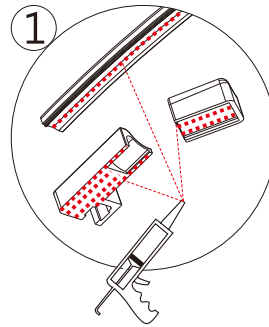
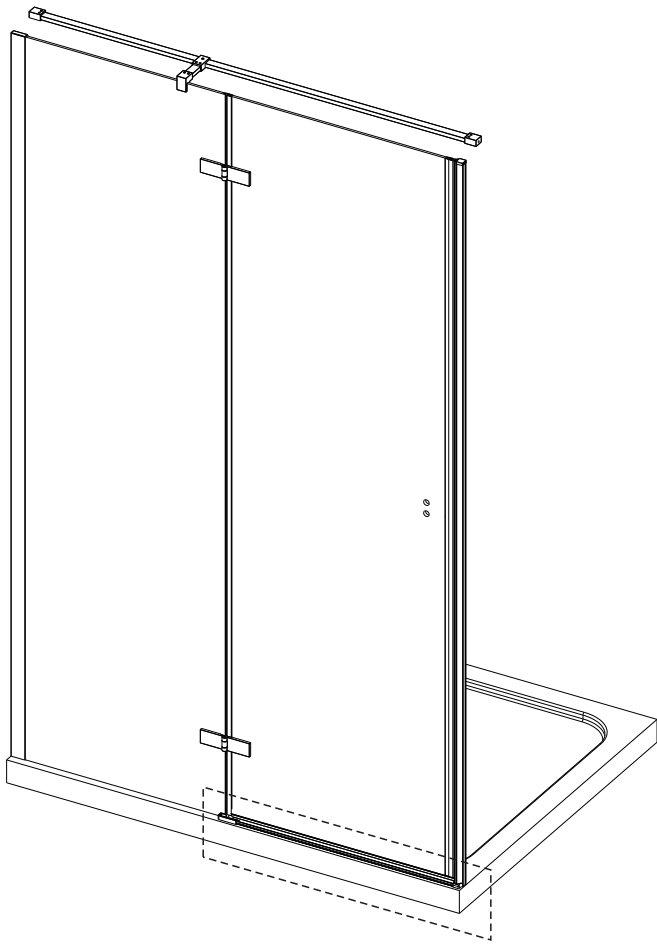
## STEP 8



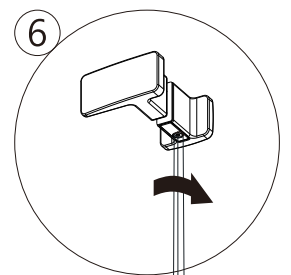
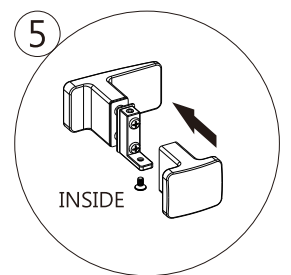
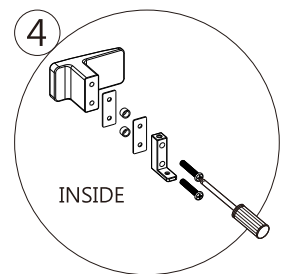
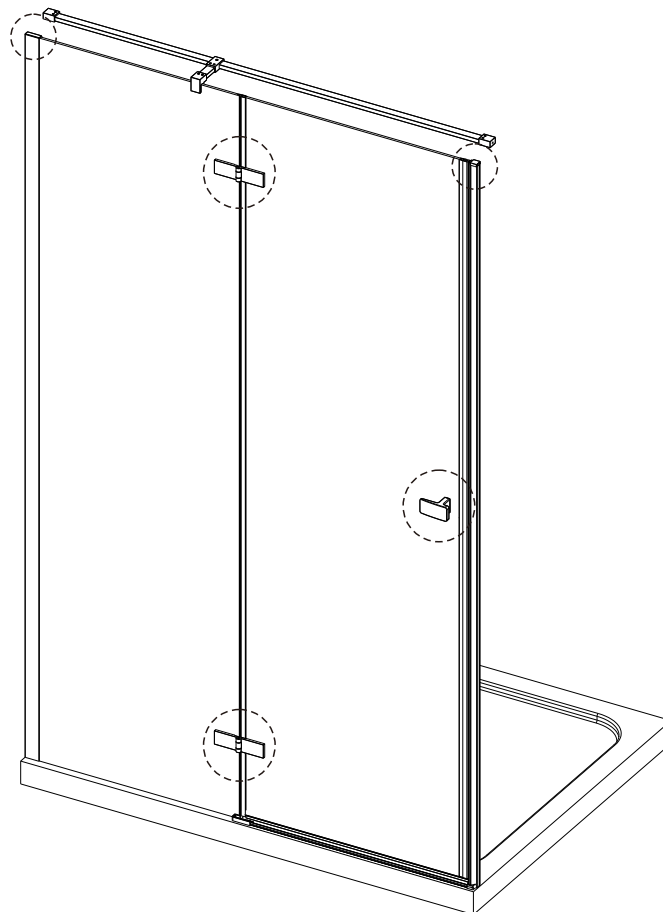
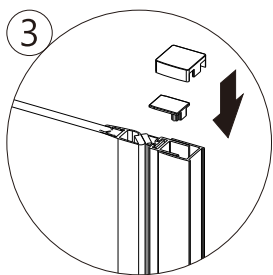
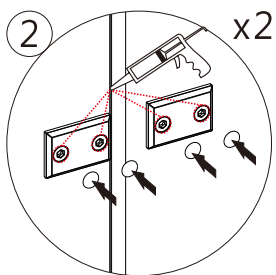
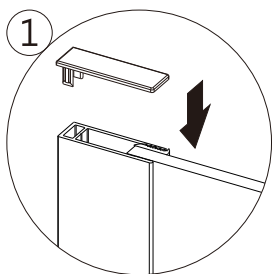
## STEP 9



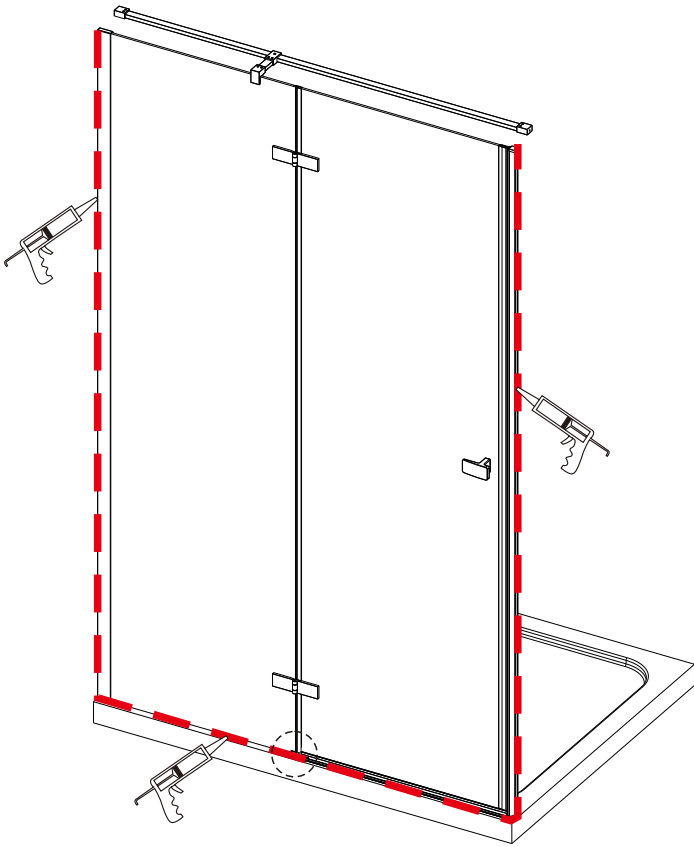
# STEP 10



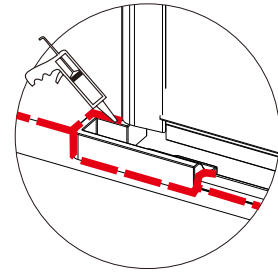
# STEP 11



## STEP 12



**Allow 24 hours for silicone to dry before use. Silicone on the outside edge only, NOT THE INSIDE**



### **Aftercare instructions**

Regularly clean your shower product with warm soapy water to prevent lime scale build up. **DO NOT** use abrasive cleaning fluids or materials, or strong chemical cleaners as this will damage the product surface.