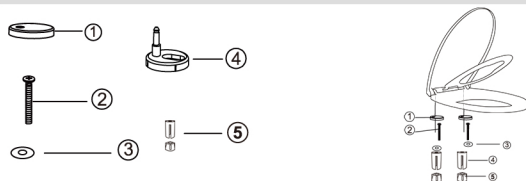


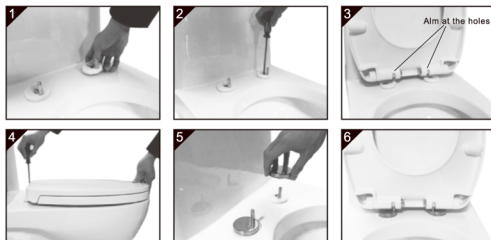
Installastion Guide

1 Parts



| NO. | Description | Qty |
|-----|---------------------------|-----|
| 1. | Stainless Steel Hinge cap | 2 |
| 2. | Bolt | 2 |
| 3. | Washer | 2 |
| 4. | Hinge Base | 2 |
| 5. | Plastic Cork | 2 |

2 Installation Guide



1. Insert the setscrew on the hinge base into the holes on the pan.
2. Tighten the setscrew but not to the end in order to adjust the seat cover properly.
3. Aim at the holes and adjust the hinge base to make the seat cover and pan match. Take out the seat cover once the installation position is confirmed.
4. Fix the hinge base on the pan firmly.
5. Put the cap into the hinge base.
6. Fix the seat cover into the hinge base.

