


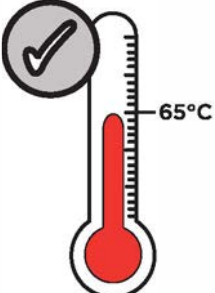
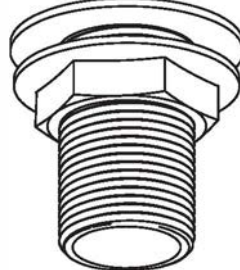
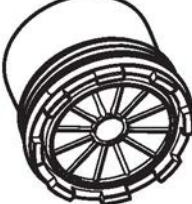
# BRISTAN

## Installation Instructions & User Guide

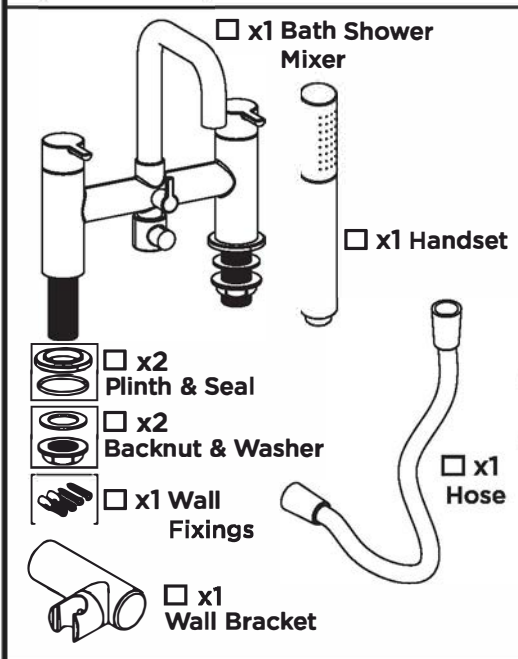
Please leave these instructions with the end user

Product Code: AL BSM Range (D1)

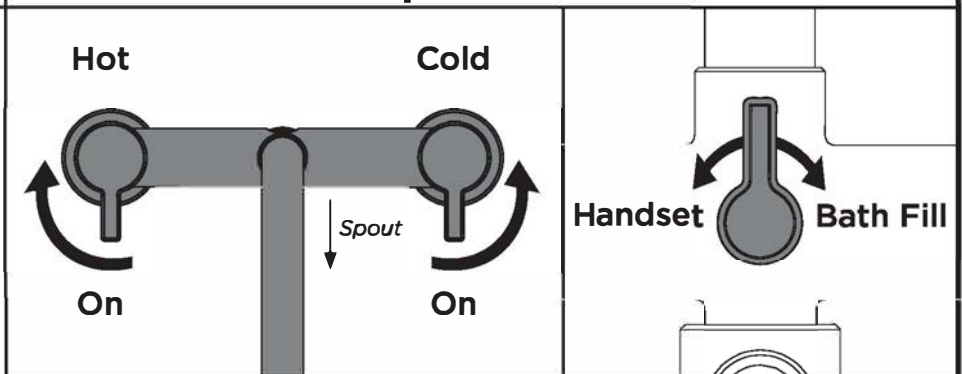
### Specification

<p><b>Dynamic Water Pressure</b> Min: 0.2 bar    Max: 5.0 bar</p>  <p>Maximum Static Pressure: 10.0 bar</p>	<p><b>Inlet Water Temperature</b></p>  <p>Maximum Hot: 65°C</p>	<p><b>Inlet Connections</b></p>  <p>3/4" BSP</p>	<p><b>Outlet</b></p>  <p>Recessed M16.5 Flow Straightener</p>
--	--	--	--

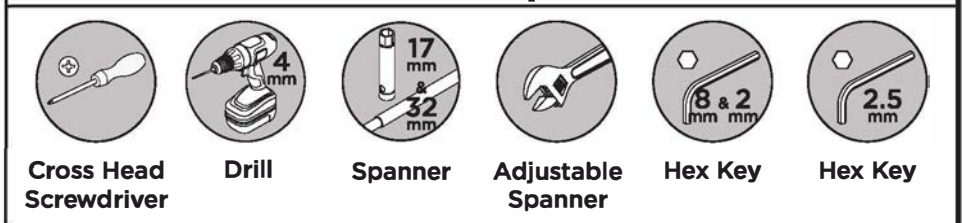
### Pack Contents



### Operation



### Tools Required



### Prior to Installation

All products manufactured and supplied by Bristan are safe to use provided that they are installed, operated and receive regular maintenance in accordance with these instructions.

This product needs to be installed in accordance with, and meet the requirements of The Water Supply (Water Fittings) Regulations (Northern Ireland) 2009 and The Water Supply (Water Fittings) (Scotland) Byelaws 2014. For full Installation Requirements & Notes (IRN) please visit [www.wrasapprovals.co.uk/approvals-directory](http://www.wrasapprovals.co.uk/approvals-directory)

Isolation valves must be fitted to the inlet water supplies to ensure ease of future maintenance. Before installing this product the water supply must be thoroughly flushed in order to remove any swarf, solder etc. Full access must be made available for future maintenance/servicing purposes.

If power tools are used do not forget to:    - Wear eye protection    - Unplug equipment after use

This product must not be modified in any way as this will invalidate the guarantee.

### Spare Parts



To replace any spare parts for your tap, why not scan the QR Code or visit [www.bristan.com](http://www.bristan.com) and search for your product.

# Installation

1

Feed the threaded inlets through the plinths, ensuring the rubber seals are in place.

Continue to thread the tails through the tap holes.

2

Rubber Washer

Backnut

Slide the rubber washer onto the threaded tail followed by the backnut.

Tighten the backnut until the tap is held securely in place.

3

Connect the hot and cold water supplies to the threaded tails.

Hot

**REMEMBER**  
Hot on the left, cold on the right.

Cold

4

Connect the hose to the tap body and handset.

5

Plan where to install the wall bracket, making sure the hose and handset can easily reach.

Remove the cap, mark the position of the fixing holes and drill.

6

Screw the wall bracket to the wall.

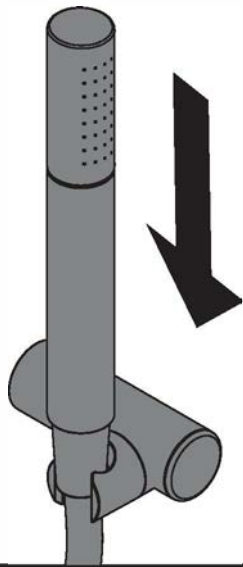
Use wall plugs where necessary depending on the wall type.

Push on the cap.

# Installation - Continued

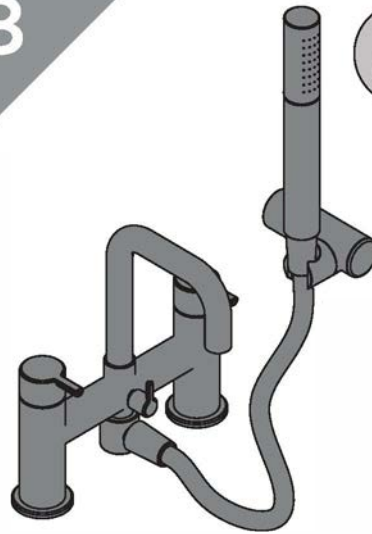
7

Check handset sits securely on the wall bracket and there is no movement.



8

**IMPORTANT**  
Turn on water supply for a few minutes and check all joints and connections for any leaks.

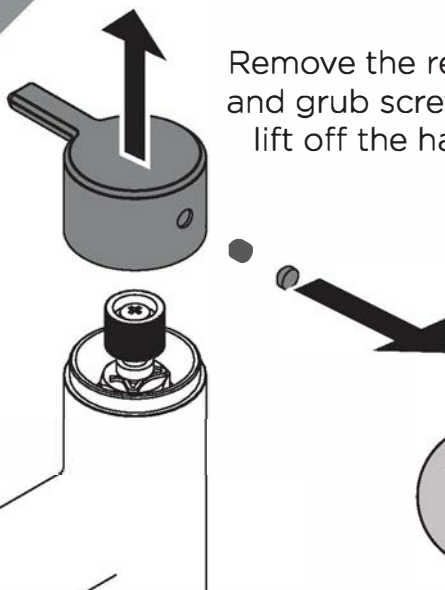


Your tap is now ready for use.

# Maintenance - Valve Replacement

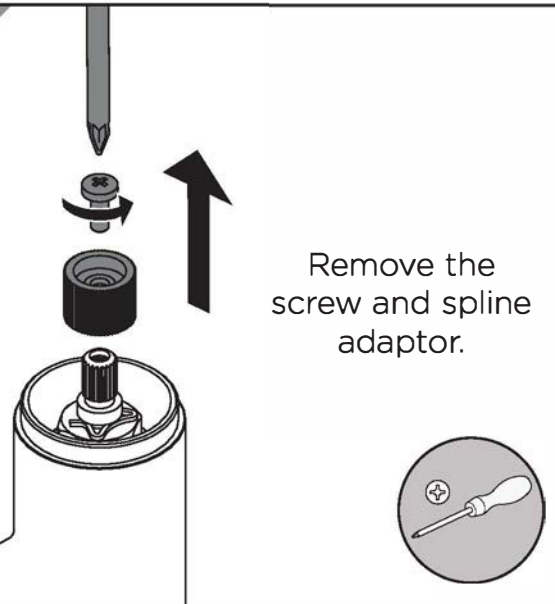
1

Remove the rear cap and grub screw, then lift off the handle.



2

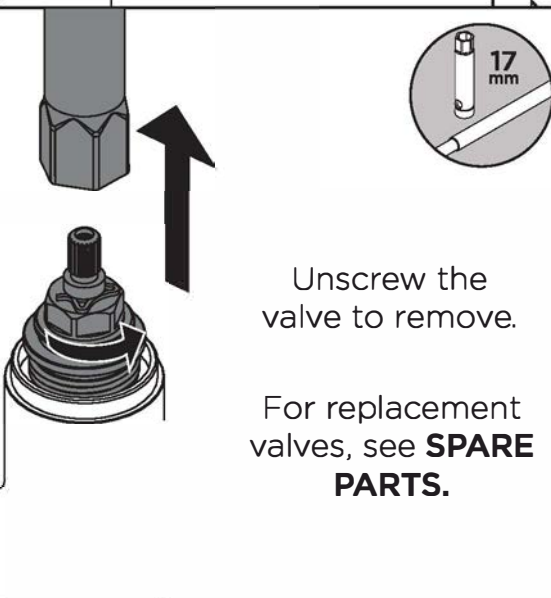
Remove the screw and spline adaptor.



3

Unscrew the valve to remove.

For replacement valves, see **SPARE PARTS**.

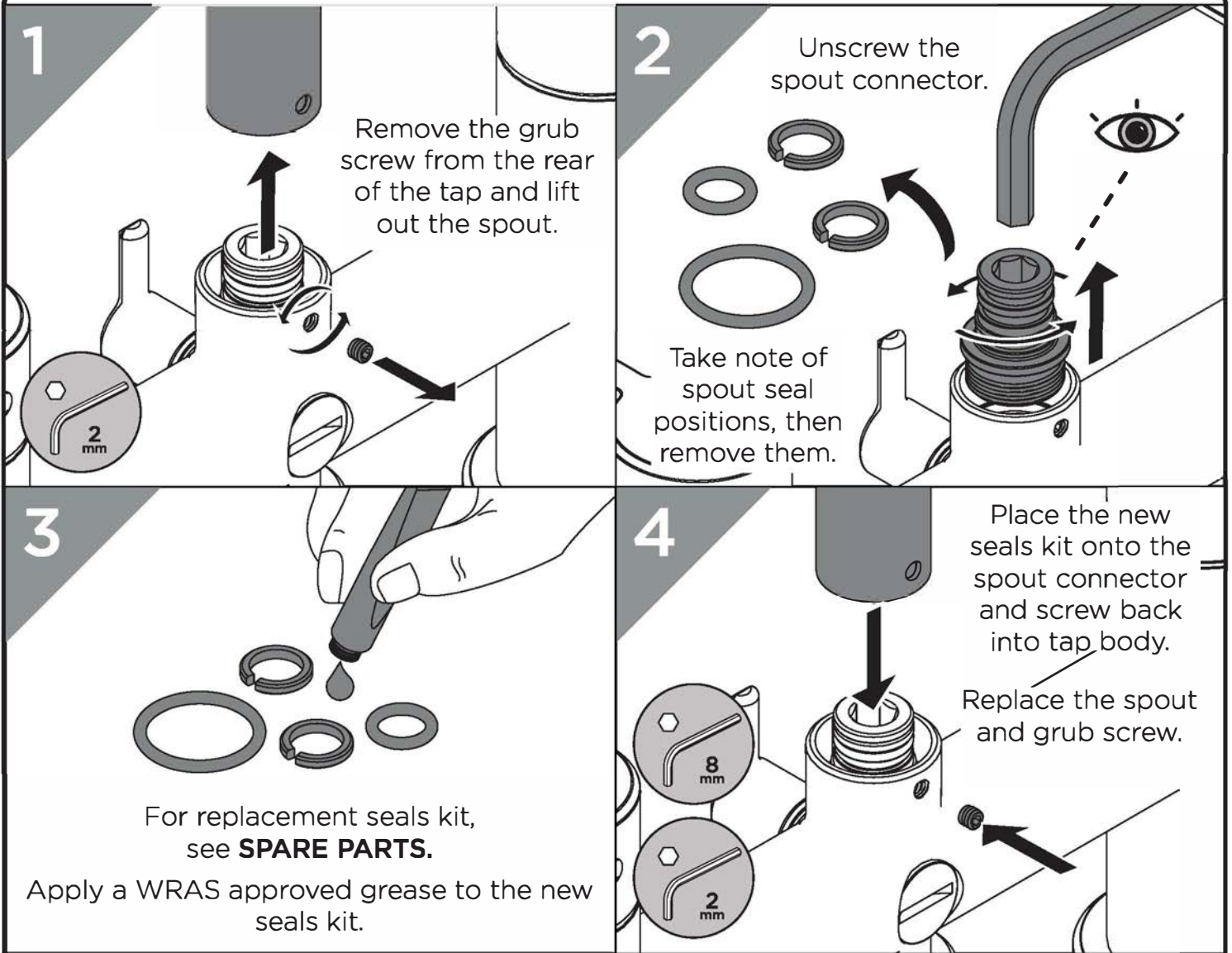


4

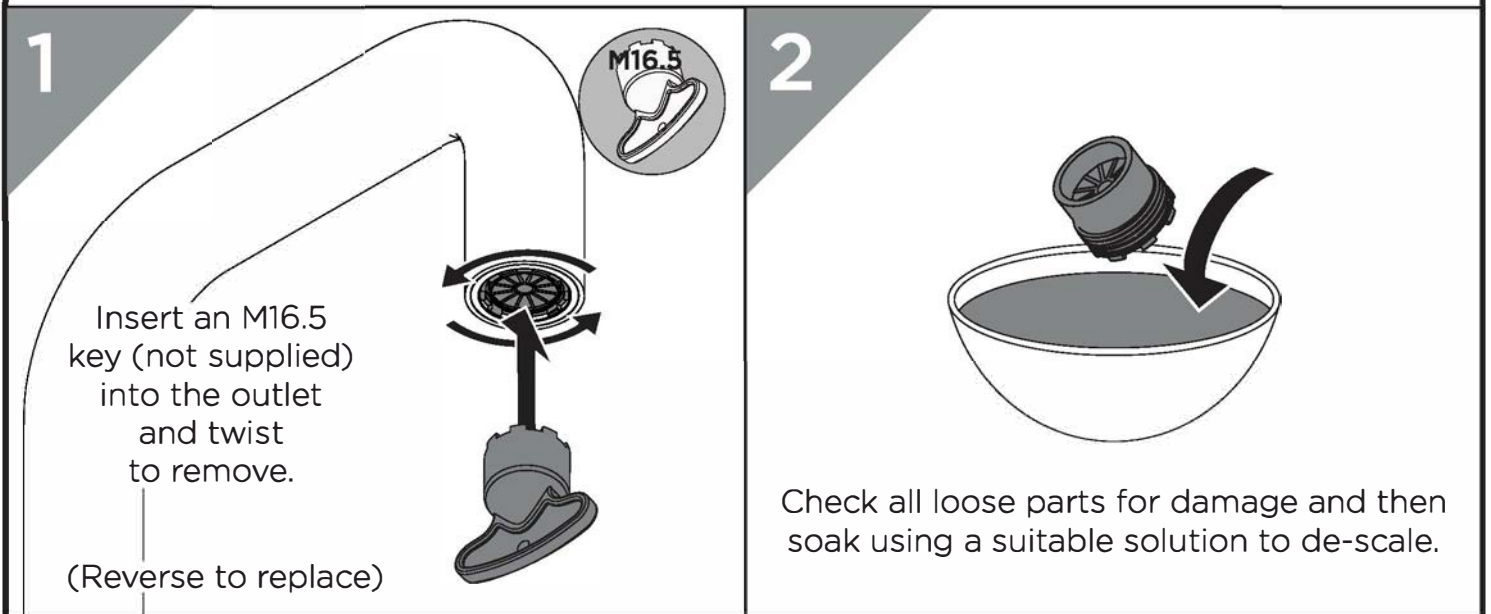
Reverse steps to replace the valves and handles.



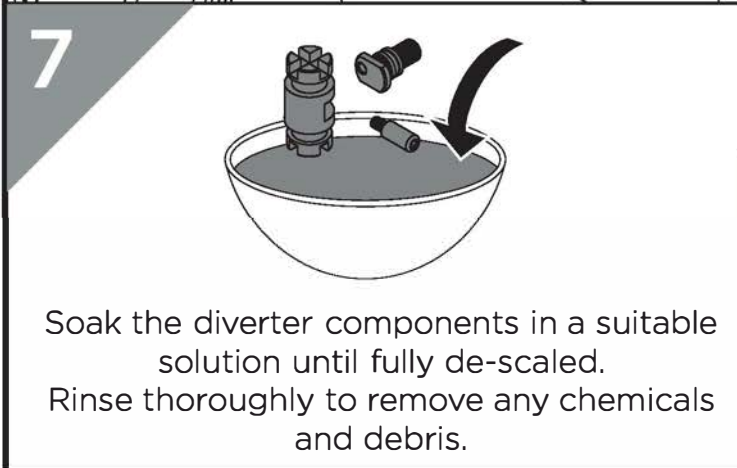
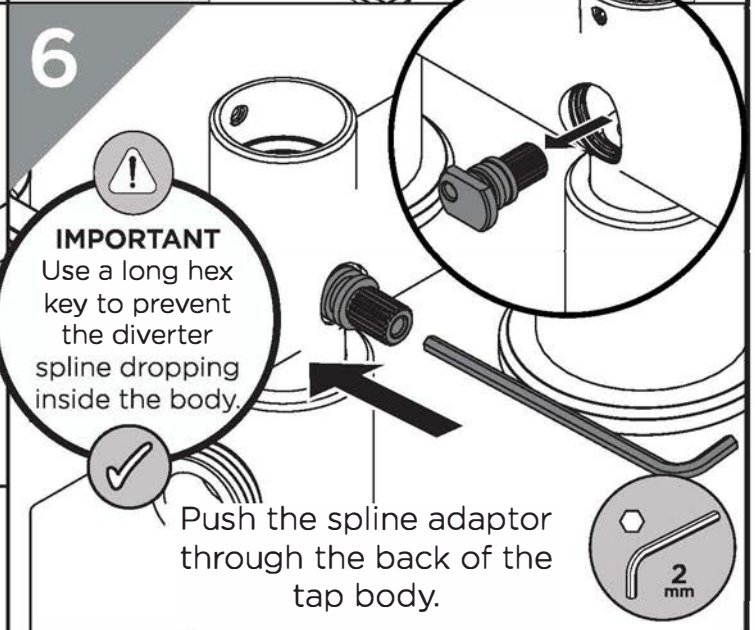
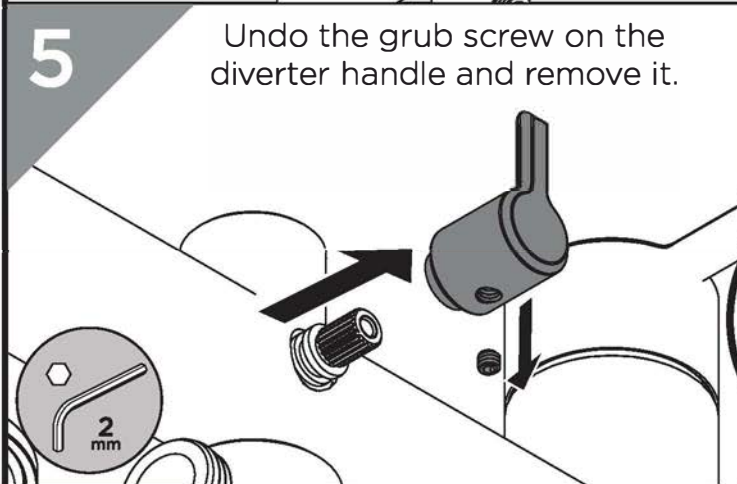
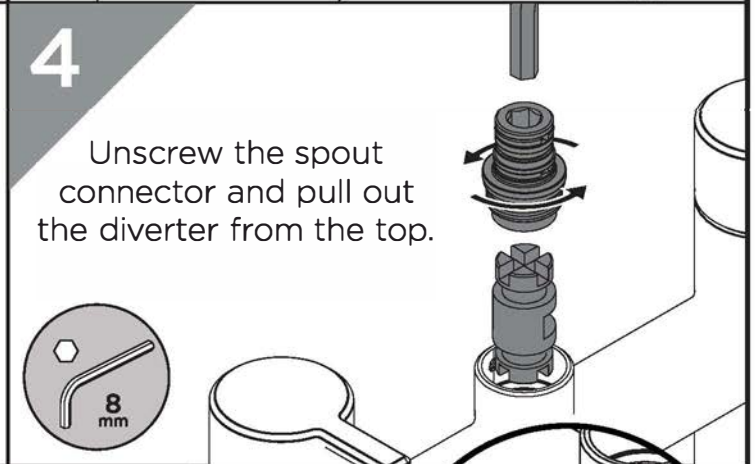
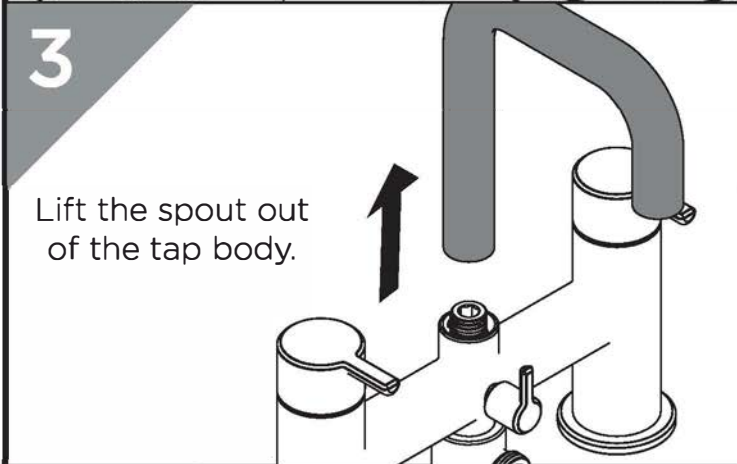
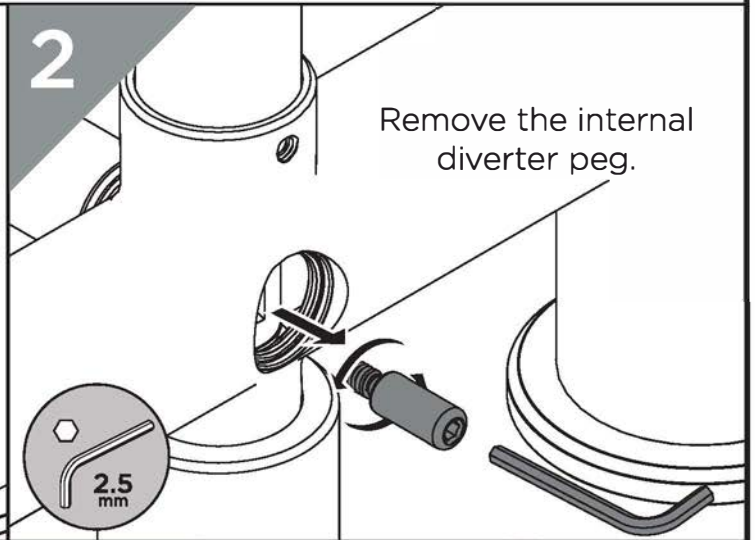
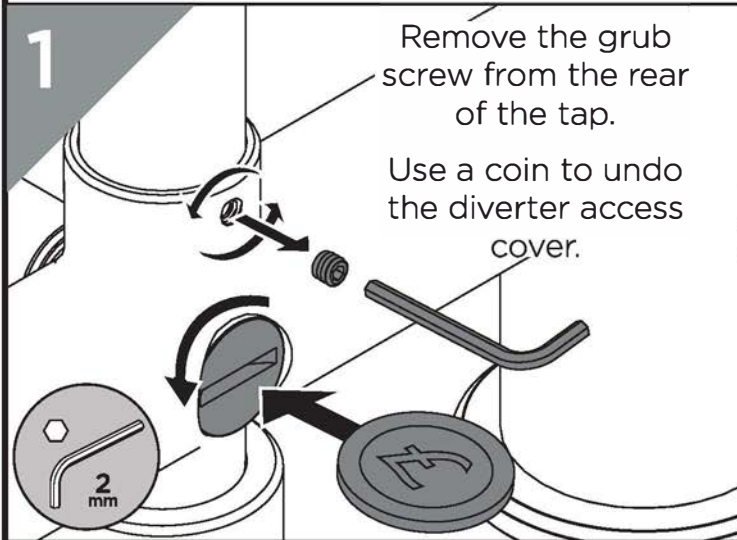
# Maintenance - Spout Seals Replacement



# Maintenance - Outlet Cleaning



# Maintenance - Diverter Cleaning



## Troubleshooting

Symptom	Cause	Remedy
<b>No flow or low flow rate</b>	Partially closed isolation valve.	Open isolation valve.
	Head of water is below the minimum distance required.	Refer to specification for minimum distance required.
	Hot or cold water being drawn off elsewhere causing pressure changes or instantaneous boiler temperature changes.	Do not use other water outlets when using the taps.
	Airlock or partial blockage in the supply pipework.	Flush through pipework to ensure removal of debris and any airlocks.
<b>Water dripping from taps</b>	This is normal for a short time after using the taps.	This is caused by residual water tension, the build up of water in the tap body.
	If water continues to drip, possibly due to the ceramic disc valves	Remove valves and replace, refer to 'Maintenance' section.
<b>Taps do not turn on</b>	Closed isolation valve.	Open isolation valve.
	Mains water supply turned off.	Turn on mains water supply.
<b>Water not coming from handset when in use</b>	Diverter mechanism not fully open.	Ensure diverter is fully open.
	Kink or blockage in hose	Make sure hose is free of any kinks and free to move. Remove handset and flush through hose.
	Head of water is below the minimum distance required.	Refer to specification for minimum distance required.

## General Cleaning

Bristan products are made from premium materials, with hand polished, PVD, EPD or electroplated finishes. Your product should be regularly cleaned with warm water, a mild pH-neutral liquid soap, and polished with a soft cloth. Any residues from soap, toothpaste, shampoos and shower gels can cause blemishes if not rinsed off straight after use.

Household bleaches and cleaners contain harsh chemicals and may damage the surface finish. Avoid using abrasive cloths, scouring pads, scrub sponges, steel wool or anything similar.

## Contact Us

# BRISTAN

Part of **BRISTAN GROUP**

**Bristan Group Ltd.**  
**A Masco Company**

**UK:** Bristan Group,  
Pooley Hall Drive,  
Birch Coppice Business Park,  
Dordon, Tamworth  
B78 1SG.

**EU:** Masco Europe S.à.r.l.  
14 Rue Strachen  
6933 Mensdorf  
Luxembourg

**Email Us:** [enquire@bristan.com](mailto:enquire@bristan.com)  
**Website:** [www.bristan.com](http://www.bristan.com)  
**Call Us:** +44330 026 6273

## Our Guarantee

At Bristan, we want to make things as easy as possible for our customers. That's why we offer solid guarantees on all our products, effective from the date of purchase, to give you peace of mind.

Your guarantee starts from the purchase of your product, but you can still benefit from registering it for easier identification in the unlikely event of a manufacturing fault, please visit [www.bristan.com/register](http://www.bristan.com/register)

For any other queries, please call Customer Service on 0330 026 6273 where our expert team of advisors will be able to offer you any help and advice.

For full guarantee terms and conditions visit [www.bristan.com/service-centre/guarantees](http://www.bristan.com/service-centre/guarantees)

