

HydroClick™

Water Resistant Laminate



- Anti-Static
- Use with underfloor heating
- Waterproof joints
- Water resistant
- Realistic texture
- Durable
- Anti-bacterial
- Fade resistant
- Simple to install

192 x 1285 x 8mm

8 Planks Per Box

1 box covers 1.973m²

WARRANTY	20 YEARS Domestic use
	3 YEARS Commercial use in kitchens & bathrooms

The following warranty covers products used in dry domestic interiors for a period of 20 years and for general commercial use up to 3 years. It also stipulates the manufacturer's obligations.

This warranty is not transferable and is only valid for the purchaser or primary consumer.

The manufacturer warrants the purchaser or primary consumer that:

- The melamine surface will not wear through
- The floor design will not fade from sunlight or artificial lighting
- The floor will not suffer staining from the accidental spillage of normal domestic consumer products such as food and drink
- The flooring will not have manufacturing defects
- The floor will withstand damage caused by normal domestic water spillages, as long as the appropriate cleaning and maintenance instructions are respected and the flooring has been laid according to the installation advice

Should the product fail to comply with the above, the manufacturer will provide the purchaser or primary consumer with replacements for the faulty planks in their original design or its equivalent when a new range of colours has been brought out, excluding laying and workmanship costs.

To benefit from the conditions of guarantee, the purchaser or primary consumer must notify the manufacturer of the defect, either directly or via an authorised dealer, within a maximum of 30 days from the discovery of the defect, and always while the product is still under warranty. This warranty does not cover wear or damage caused by laying, cleaning, care or repair carried out in any other way than indicated in the guidance on the back of this sheet.

This warranty does not cover damage caused by any of the following eventualities:

- Accidents, abuse or wrongful use
- Exposure to extreme heat or cold
- Incorrect installation
- Incorrect maintenance or permanent contact with extreme dampness
- Damage caused during transport by third parties
- Modification, alteration, repairs or services carried out by unauthorised dealers
- Abnormal wear such as damage caused by stiletto heels, insufficient furniture protection, grit, sand or other abrasive elements
- Damage caused by water, due to excessively damp concrete, hydrostatic pressure, flooding from ice-making machines, fridges, sinks, dishwashers or pipes
- Planks with broken joints that have been laid and lifted more than three times
- Nor does it cover the problems caused by manufacturing defects not identified prior to installation

The warranty will only apply in cases where the damaged areas of planks are visible and affect a surface area bigger than a square centimetre. To file a claim under this guarantee, the flooring must have been laid according to the installation instructions on the back of this sheet.

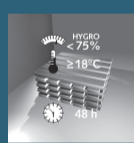
No claims will be accepted under this warranty without proof of purchase. The purchaser or primary consumer must give or send a valid receipt or other documents proving purchase to the authorised dealer.

The purchaser or primary consumer must give or send to the authorised dealer, the detailed description of the problem, together with a photograph clearly indicating the problem covered by the warranty.

The manufacturer authorises no person to assume any obligation or responsibility in its name in relation to this product. This warranty gives the purchaser or primary consumer specific legal rights.

Please retain this sheet for future reference.

Made in Germany



www.blauer-engel.de/uz176



CE

VERONA
Project House, Armley Road,
Leeds, West Yorkshire, LS12 2DR

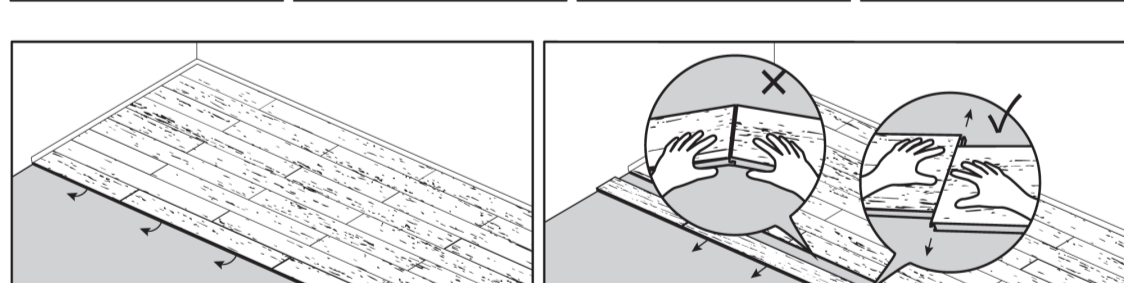
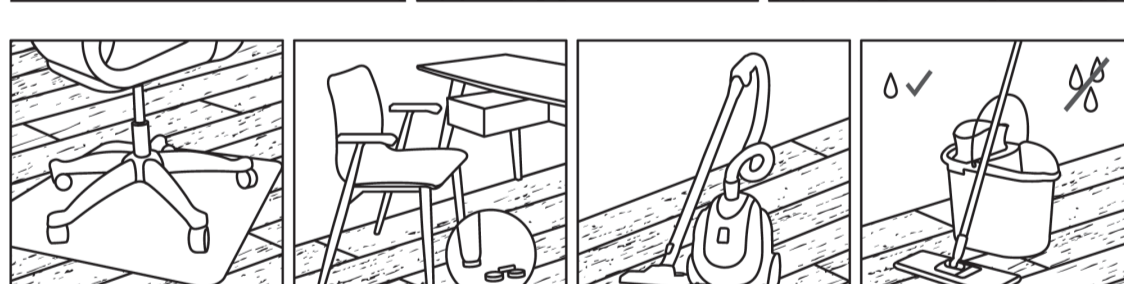
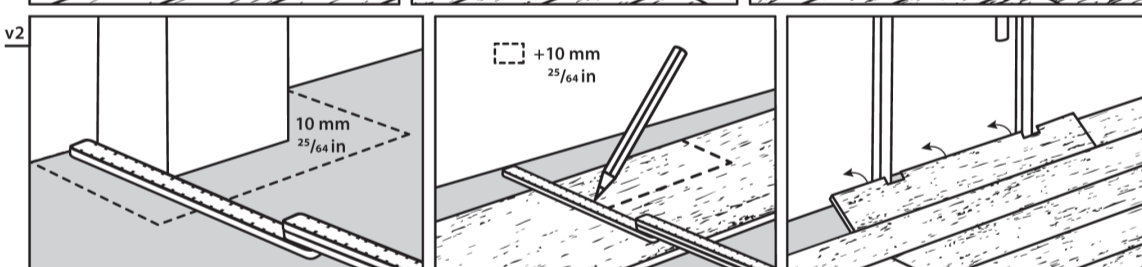
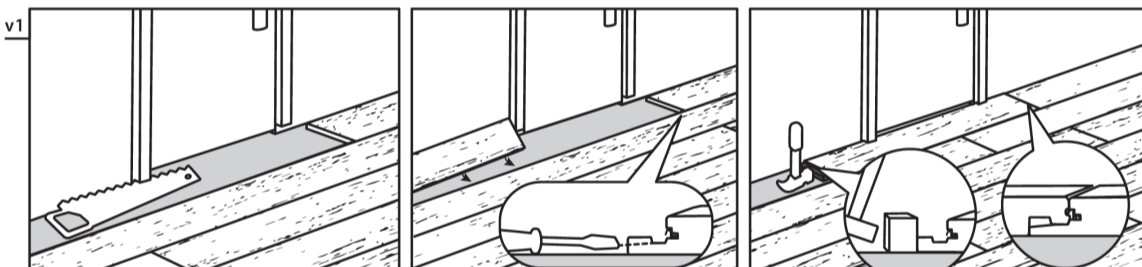
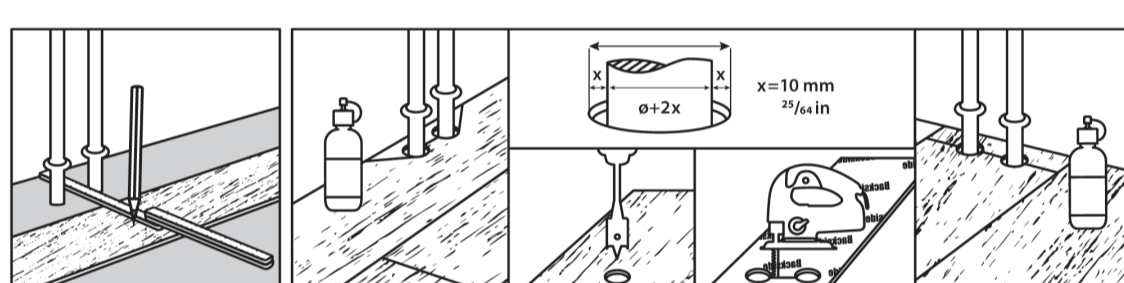
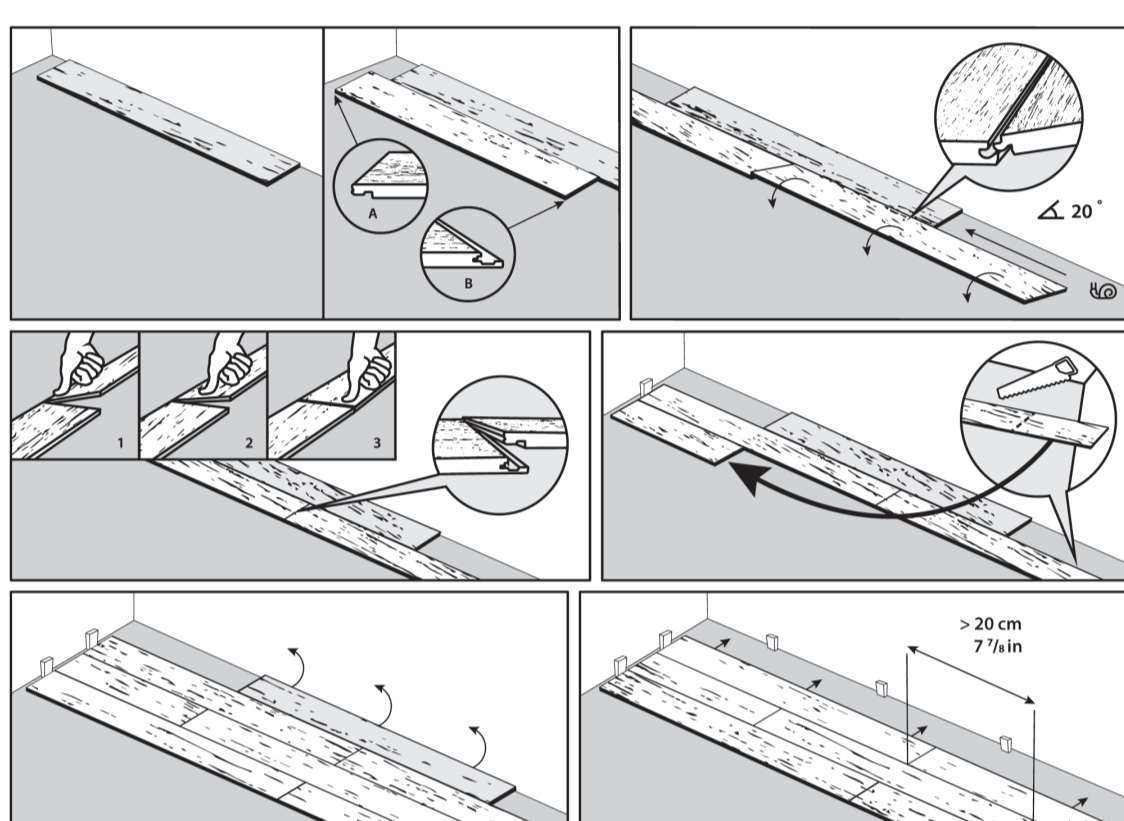
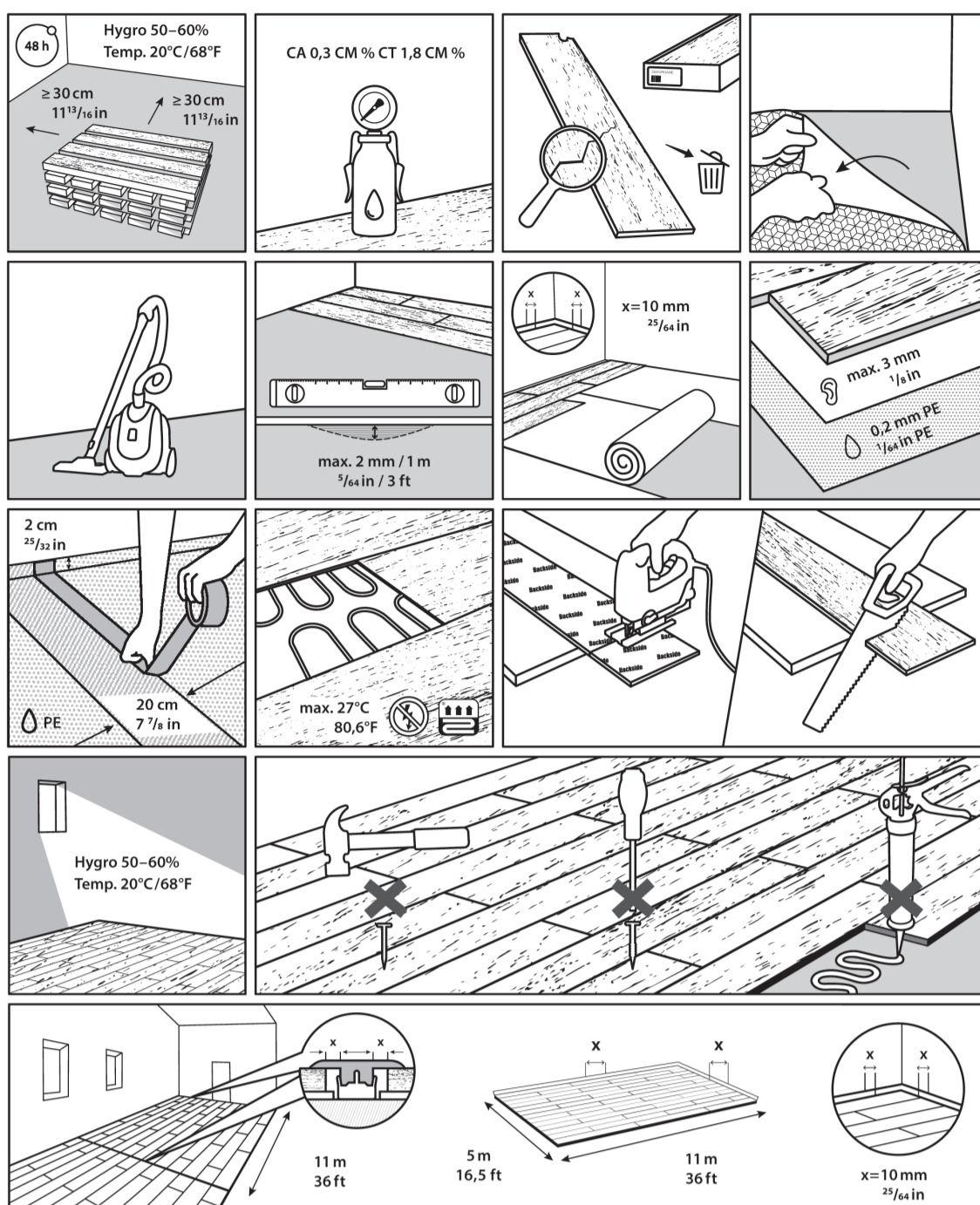
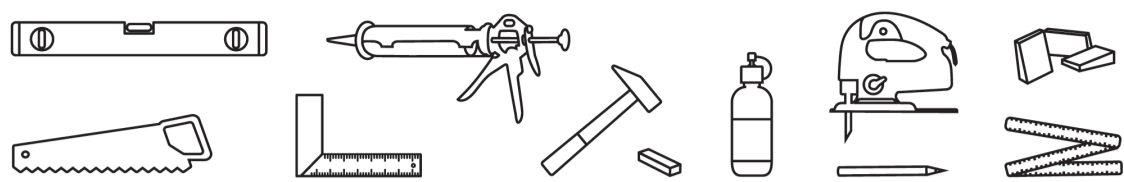
21

Harmonised Standard: EN 14041:2004 / AC:2006

The product(s) are intended for use as internal floor covering(s) within a building according to the manufacturer's specifications and installation practices in accordance with EN-14041.

DOP 13-CL-001

Abrasion resistance	AC4
Reaction to fire	CFI - s1
PCP content	< 5 ppm
Formaldehyde emissions	E1
Slip rating	DS
Electrical behaviour	≤ 2kV
Thermal conductivity	≥ 0,075 W/mK
Impermeability to water	NPD
Stability with respect to fire behavior	NPD



Preparation
Preparation is key before you begin to install your HydroClick Water Resistant Laminate to ensure a long-lasting finish. HydroClick must always be laid on to a smooth, level, clean and dry surface. Stack the unopened packs of laminate in the room where they are to be laid for at least 48 hours prior to laying. This will allow them to acclimatise to room temperature. You should always remove any existing carpet, underlay, tiles or vinyl flooring before you begin installation. If you are installing over floorboards, ensure they are firmly secured and that there are no protruding nails or screws. Be sure to always follow the manufacturer's instructions when laying underlay. We recommend a maximum thickness of 3mm, minimum compression 50 Kpa. If your subfloor is concrete, you may need to lay a damp-proof membrane, or use an underlay that has damp-proofing qualities. As variations in colour, shading and texture may occur between different batches, we recommend you purchase sufficient packs in one go to complete a project. Always ensure a satisfactory blend of shades can be achieved before installation.

Installation
HydroClick is laid with an expansion gap of 10mm at all edges where the product meets a boundary. You may wish to remove your skirting boards and re-attach them after installing your flooring to discreetly disguise the expansion gaps. Alternatively, you can use a decorative trim. This should be adhered to the wall or skirting and not the top of the flooring. Always loose lay your flooring before fixing to determine the most aesthetic laying pattern. If you are laying HydroClick on top of floorboards, you should loose these at a 90° angle to the floorboards for additional strength. We recommend working from left to right from the farthest corner of the room.

Safety
Always wear safety goggles and a dust mask when sawing or drilling. Cut or drill HydroClick outdoors if possible or ensure your room is well ventilated. For extra comfort and protection, we recommend wearing knee pads.

Aftercare
Brush or vacuum to remove dust regularly. For an extra clean, use a damp mop or cloth with diluted flooring cleaning solution. Apply felt pads to furniture that sits on top of your flooring to prevent damages.

Top tips
It's a good idea to keep any spare planks you may have after installation - in case you ever need to replace part of your flooring due to damages. If the thickness of the underlay, laminate flooring and threshold bar prevents doors opening into the room, remove the door and trim down to allow extra clearance.