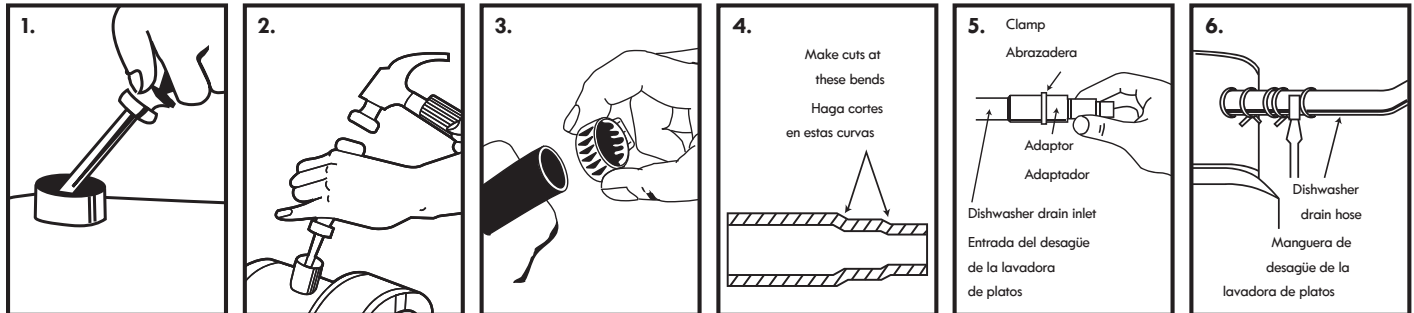


Kenmoreattach!

Kenmore®
Dishwasher Connector Kit

• Fits all Kenmore disposers and most
major brands



Installation Instructions

If you are making a disposer/dishwasher connection for the first time, follow steps 1-6. If you are simply replacing the connection, follow steps 3-6.

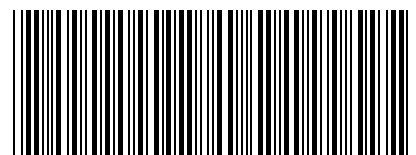
1. Turn off power to disposer at the source and then disconnect disposer from the sink drain. Inset a screwdriver tip into the dishwasher drain hole at an angle, as shown.
2. Gently tap the butt end of the screwdriver with a hammer until the molded plug pops out. Remove the loose plug from your disposer. Reconnect your disposer to the sink and drain.
3. Remove the clamp or fittings from the end of your dishwasher drain hose.
4. Determine the outer diameter of dishwasher drain line and cut rubber adaptor to proper size.
5. Slide large end of adaptor over inlet tube of disposer. Fasten with the appropriate size clamp.
6. Slip the remaining clamp over the dishwasher drain hose and back 2-3 inches.

Note: Manufacturer assumes no responsibility for failure due to improper installation.

Important: Connections should comply with local plumbing codes. Check clamps for tightness.



P/N 72684D
Made in U.S.A.
Product dist. in U.S. by Sears Brands Mgt.
Corp. Hoffman Estates, IL 60179



D 4 2 M 6 0 6 8 4

Check out our full range of Kitchen Products

Kitchen Sinks

Stainless Steel Kitchen Sinks

Granite Composite Kitchen Sinks

Glass Kitchen Sinks

Ceramic Kitchen Sinks

Franke Kitchen Sinks

Kitchen Taps

Contemporary Kitchen Taps

Traditional Kitchen Taps

Franke Kitchen Taps

Pull out Rinser Kitchen Taps

Instant Boiling Water Taps

Insinkerator Waste Disposal Units

plumbworld
Big brands, small prices.