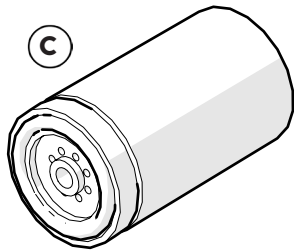
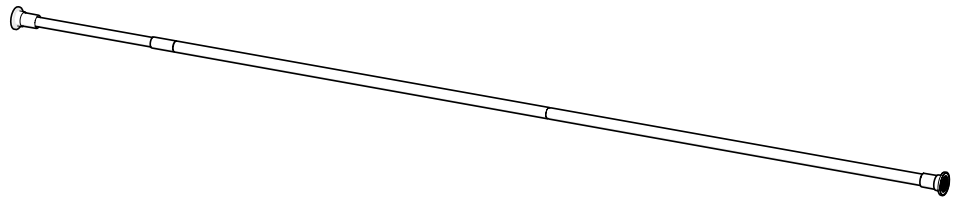


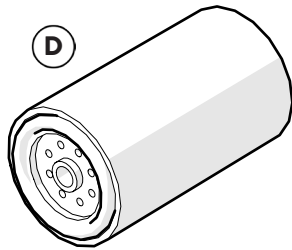
Go to www.croydex.com to see a helpful installation video.

STICK N LOCK 8'6" TELESCOPIC ROD

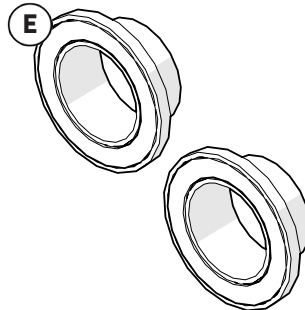
AD1021**



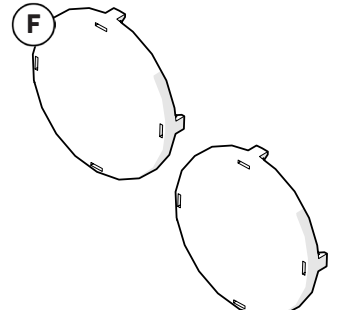
Threaded Wall Bracket



Fixed Wall Bracket



Stick N Lock Rings



Protective Caps

DO

- Clean the wall surfaces before mounting.
- Extend the rod fully against the walls before locking.
- Tighten the threaded bracket to fully tension the rod.
- Ensure you are happy with the position of the rod before sticking it in place.
- Apply pressure to the Stick N Lock rings for at least 30 seconds.

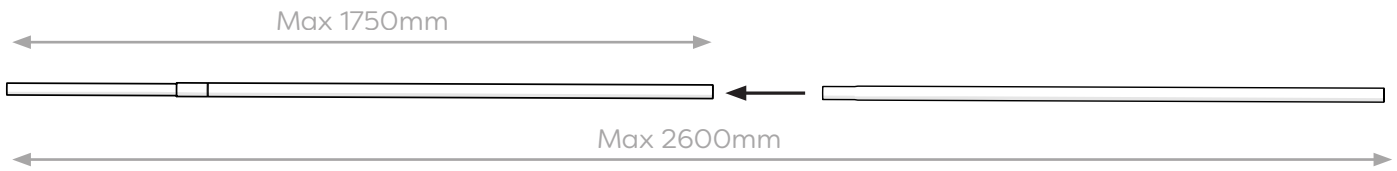
DON'T

- The adhesive is **NOT** suitable for unfinished materials such as brick, block-work, wood, emulsion paint, loose, flaky surfaces or surfaces contaminated with grease, wax or dust. **DO NOT USE ON DECORATIVE WALL PAPER FINISHES.**
- Over-tighten the locking mechanism as you can damage the rod.

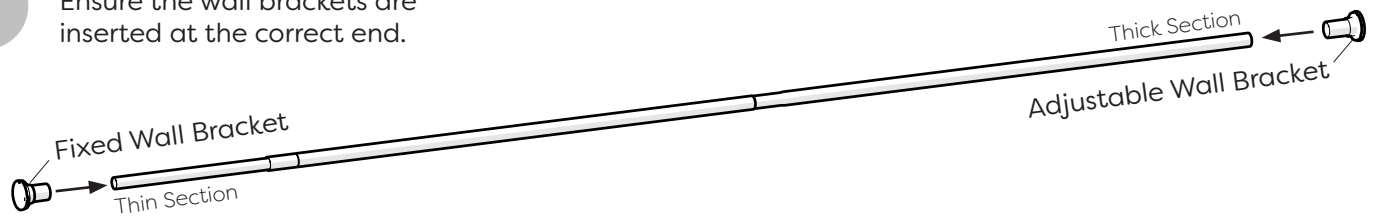
SAFETY AND CARE

1. Do not use this product as a grab bar.
2. Clean product regularly with a soft damp cloth but do not use abrasive or chemical cleaners, as these may damage the product.
3. Do not overload the rail. Suitable for use with a maximum of two standard shower curtains.
4. The adhesive is suitable for surfaces such as gloss paint, tiles, polished stone, laminates and textured surfaces.
5. Do not use tile cleaning chemicals on or around this product as they may affect adhesion.

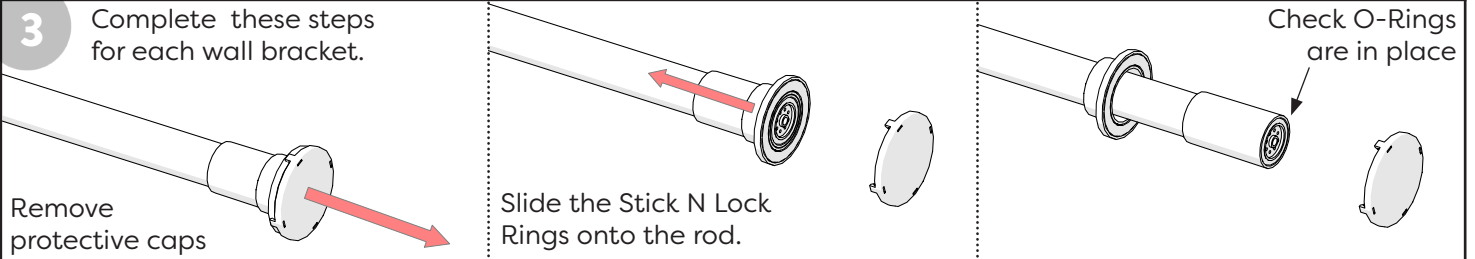
1 If required increase the rod length by inserting the extra section.



2 Ensure the wall brackets are inserted at the correct end.

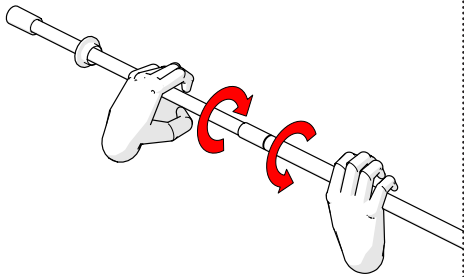


3 Complete these steps for each wall bracket.

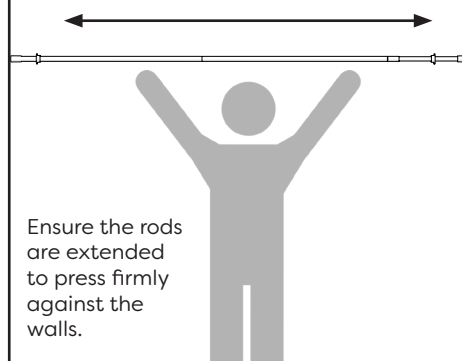


4 Ensure mounting points on the wall are clean and dry. Only wash with warm soapy water.

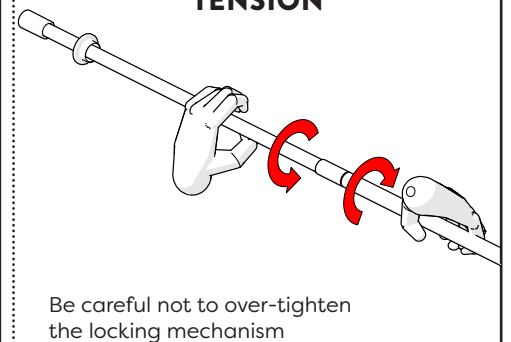
TWIST TO UNLOCK



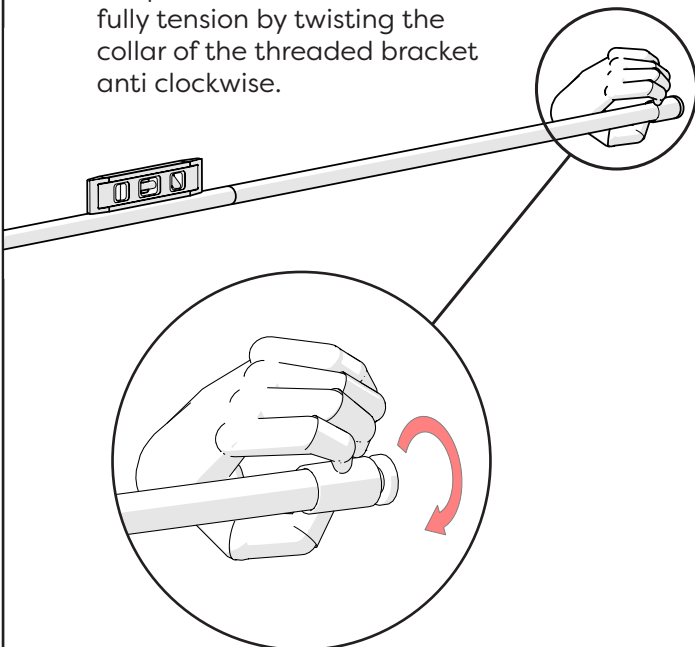
SLIDE & EXTEND BETWEEN THE WALLS



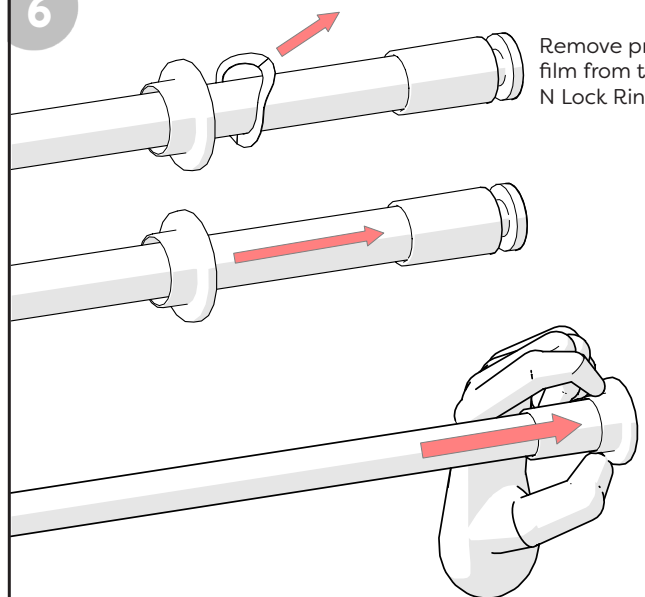
TWIST TO LOCK WHILST UNDER TENSION



5 Check the level and height to ensure that you are happy with the position of the rod. Then fully tension by twisting the collar of the threaded bracket anti clockwise.



6 Remove protective film from the Stick N Lock Rings.



Press the Stick & Lock rings against the wall for **30 seconds** ensuring that even pressure is spread across the bracket and your rod is ready for use.

Check out our full range of Bathroom Accessories

Bathroom Accessory Sets

Heated Towel Rails

Bathroom Extractor Fans

Bathroom Lighting

Shower Seats

Grab Rails

Shower Curtains

Toilet Brushes

Bathroom Cleaning Products

Wall Mounted Bathroom Accessories

Robe Hooks

Bathroom Tumblers

Toilet Roll Holders

Soap Dishes

Towel Rings

Shower Caddies

Bathroom Mirrors

Standard Bathroom Mirrors

LED Bathroom Mirrors

Shaving Mirrors

plumbworld
Big brands, small prices.