

# Choose your colour accent

We have created a range of five different colour accents to choose from to suit your style and decor. Your choice will include a matching colour accent for both the controller and the shower handset. Stardust Silver is included as standard. To purchase other colour accents, call our Customer Service team; contact numbers are at the back of this guide.

## Q™ CONTROLLER COLOUR ACCENTS



Lagoon Blue

Sunrise Orange

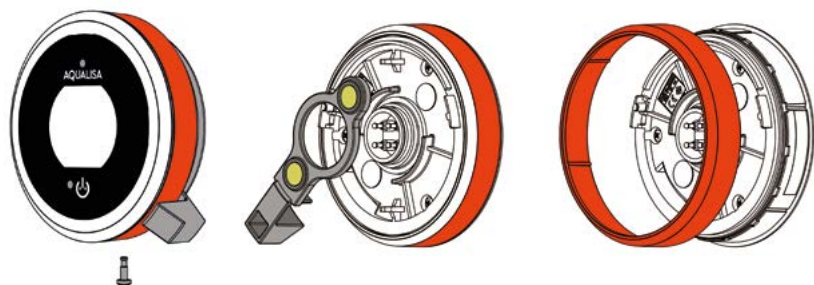
Stardust Silver\*

Polar White

Shadow Grey

## CHANGING THE Q™ CONTROLLER COLOUR ACCENT

- 1 Switch off the power to the Quartz™ Smart Valve.
- 2 Loosen the retaining screw at the bottom of the control.
- 3 Remove the Q™ controller from the back plate by holding the Q™ lever to the extreme left and using it as leverage to rotate the whole controller clockwise until it releases from the back plate.
- 4 Remove the Q™ lever. This is held on by magnets.
- 5 Remove the colour accent ring by hand. There may be some resistance.
- 6 Replace the new colour accent using the same steps in reverse.



## Q™ SHOWER HEAD COLOUR ACCENTS



Lagoon Blue

Sunrise Orange

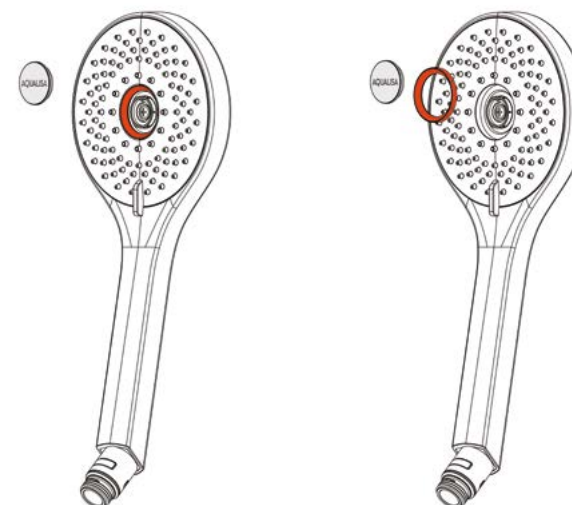
Stardust Silver\*

Polar White

Shadow Grey

## CHANGING THE SHOWER HEAD COLOUR ACCENT

- 1 Using a small flat head screw driver, carefully remove the badge.
- 2 Remove the colour accent in the same way.
- 3 Replace the new colour accent by pushing it into place and replacing the badge.



## **Check out our full range of Showers**

Electric Showers

Digital Showers

Mixer Showers

Power Showers

Smart Showers

Shower Towers

## **From Top Shower Brands**

Mira Showers

Aqualisa Showers

Triton Showers

Gainsborough Showers

## **Shower Pumps can upgrade your showering experience even more**

Stuart Turner Shower Pumps

Salamander Shower Pumps

Grundfos Shower Pumps

**plumbworld**  
**Big brands, small prices.**