

# Amanda

Modern bow fronted bath



- Contemporary bow fronted freestanding design
- 100% QUARRYCAST™  
- unique solid surface material
- Easy clean high gloss finish
- Exterior and feet can be painted
- Can be used as a built-in bath without feet

## Options To Be Specified

### Bath:

- **Predrilled tap holes.** 2 at 180mm centres
- **No tap holes.** Suitable for freestanding or wall mounted taps - or non-standard taps requiring bespoke on-site drilling of holes.

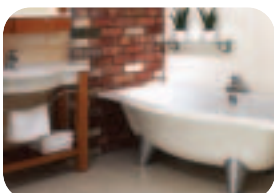
### Feet:

- Modern designer QUARRYCAST™ feet - White
- Modern designer QUARRYCAST™ feet - Silver

### Recommended Waste

**K9 Concealed Pop-Up - Chrome**

*NB: For the full range of Victoria & Albert waste kits and standpipes suitable for the Amanda, please refer to the price list*



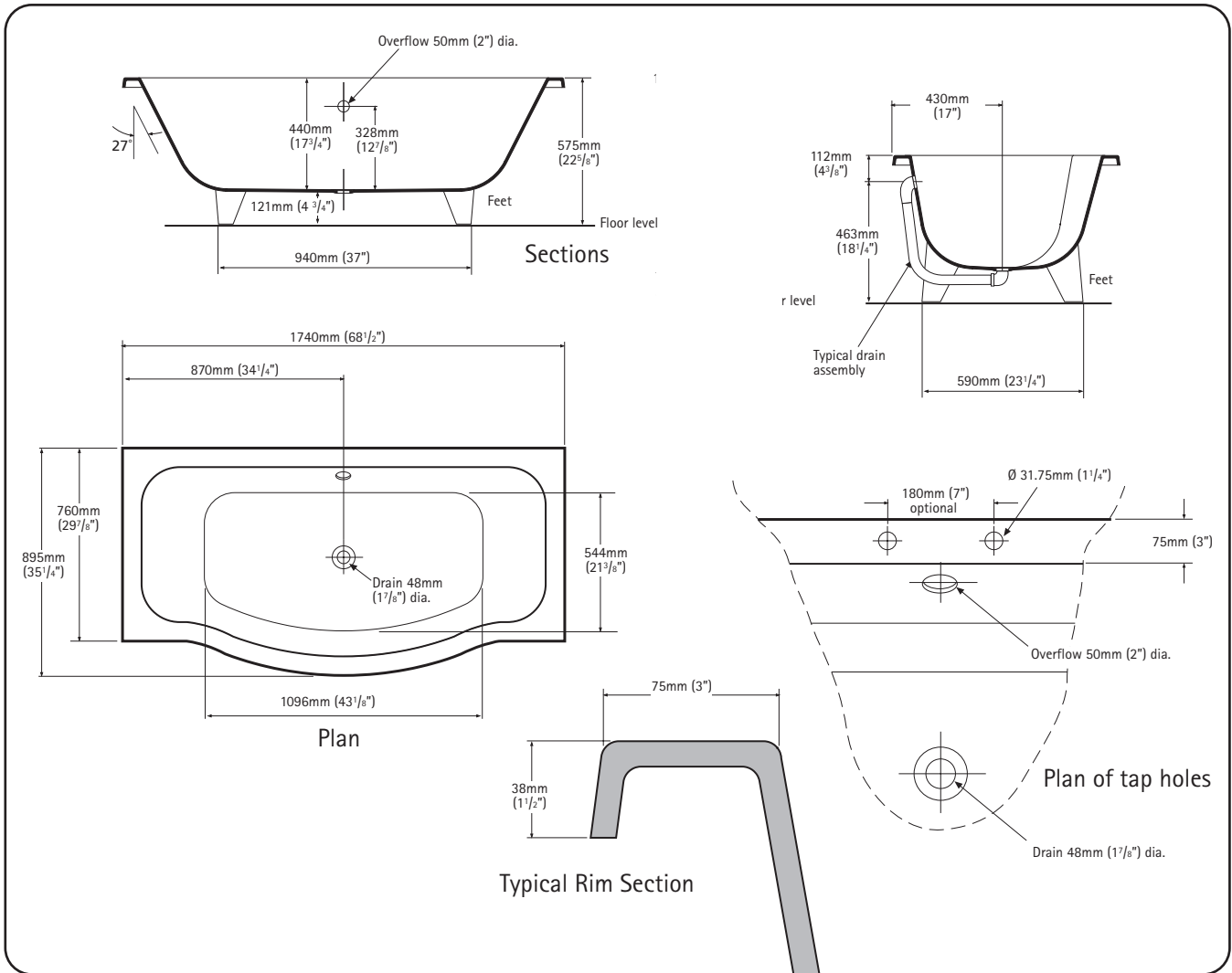
Note: For product specifications please see over

[www.vandabaths.com](http://www.vandabaths.com)



# Amanda

Modern bow fronted bath



## General specifications for Amanda bath

Installed size	1740mm x 760-895mm x 575mm
Weight	60kg
Weight with water	340kg
Litres to overflow	280litres
Bathing well at sump	544mm x 1096mm
Bathing well at rim	610mm x 1590mm
Water depth to overflow	328mm

## Notes

Refer to installation instructions supplied with bath for additional information. Can be used as a built-in bath without feet. The feet supplied support sump of bath. no additional support required.

Fittings (taps & drain assembly) not included and must be ordered separately. If installing a floor mounted tap: refer to 'drilling tap holes' instructions before installation.

Provide suitable reinforcement for all supports.

## Important

Dimension of fixtures are nominal and may vary within the range of tolerances established by ANSI standard A112.19.4M.

These measurements are subject to change or cancellation.

No responsibility is assumed for use of superseded or void leaflet.

**plumbworld**  
**Big brands, small prices.**

Pdf Supplied By <http://www.plumbworld.co.uk/>