

Capri

Modern double-ended bath



- Contemporary freestanding design
- 100% QUARRYCAST™ – unique solid surface one-piece casting
- Integrated full length towel rail
- Ergonomically designed lumbar supports
- Easy clean high gloss finish
- Exterior can be painted

Options To Be Specified

Bath:

- **Predrilled tap holes.** 2 at 180mm centres
- **No tap holes.** Suitable for freestanding or wall mounted taps – or non-standard taps requiring bespoke on-site drilling of holes.

Towel Rail:

- Chrome towel rail
- Satin Nickel towel rail

Recommended Waste

K10 Push Control Plug – Chrome
K10 Push Control Plug – Satin Nickel

NB: For the full range of Victoria & Albert waste kits and standpipes suitable for the Capri, please refer to the price list



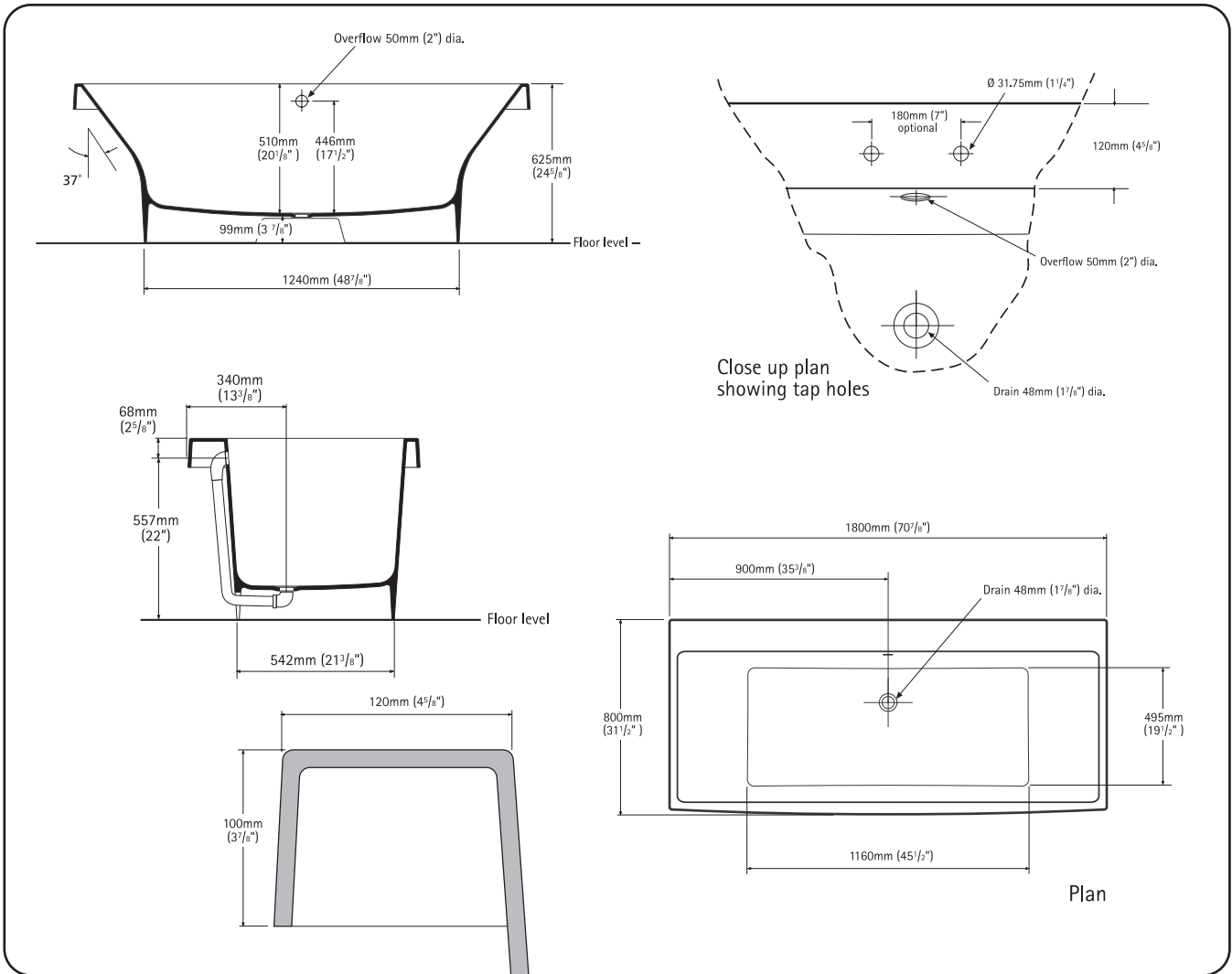
EC Reg. Design No. 000091947
Note: For product specifications please see over

www.vandabaths.com



Capri

Modern double-ended bath



General specifications for Capri bath

| | |
|-------------------------|------------------------|
| Installed size | 1800mm x 800mm x 625mm |
| Weight | 99kg |
| Weight with water | 420kg |
| Litres to overflow | 320litres |
| Bathing well at sump | 1160mm x 495mm |
| Bathing well at rim | 1700mm x 620mm |
| Water depth to overflow | 446mm |

Notes

Refer to installation instructions supplied with bath for additional information. Can be used as a built-in bath.

Fittings (taps & drain assembly) not included and must be ordered separately. If installing a floor mounted tap: refer to 'drilling tap holes' instructions before installation.

Provide suitable reinforcement for all supports.

Important

Dimension of fixtures are nominal and may vary within the range of tolerances established by ANSI standard A112.19.4M.

These measurements are subject to change or cancellation.

No responsibility is assumed for use of superseded or void leaflet.

plumbworld
Big brands, small prices.

Pdf Supplied By <http://www.plumbworld.co.uk/>