

The company reserves the right, in the event of a claim not covered by the guarantee, to charge the claimant for parts and labour at current rates. This guarantee is given in addition to and does not affect your statutory rights.

In the interest of continuous product development we reserve the right to alter the specification as necessary.

In the unlikely event that you need to make a claim on our guarantee please contact MX customer services on 01684 293311 or sales@mx-group.com

For Surface Mounted Thermostatic Shower FITTING INSTRUCTIONS

Introduction

Your bar shower fitting is a thermostatic mixer.

It has been designed and tested to comply with BS EN 1287:1999 & BS EN 1111:1999, manufactured to the highest quality standards.

These instructions are for your guidance to a safe and successful installation and should be left with the user.

Specification

Inlet Connections 1/2" BSP to 1/2" BSP fixings

Water Pressures: Min. 0.1 bar Max. 5 bar Maximum recommended imbalance between hot & cold pressures should not exceed 5:1

Factory Set Temperature: 38°C (Can be overridden to suit site conditions)
Hot & Cold Supply Temperature

Maximum Cold Supply 25°C Maximum Hot Supply 80°C

NOTE: The inlet hot water temperature must be at least 10°C above the required blend temperature to ensure that the safety shut off will work.

Pack Contents Checklist:

1 x The Valve, 1 x Riser rail kit, 1 x Shower hose, 2 x Elbow/shroud connecting kits and 1 x 5 Mode showerhead

Installation

Prior to drilling into walls, check there are no hidden electrical wires, cables or water supply pipes with the aid of an electronic detector. If you use power tools use them safely. Wear eye protection. Unplug equipment after use.

NB Isolating valves should be fitted to both hot and cold water supplies for servicing purposes.

- 1 Identify all components and check for completeness, particularly before arranging fitting.
- 2 This mixer should be installed in compliance with the Water Regulations. For further details contact your Local Water Authority.
- 3 This Mixing valve is suitable for use with the following systems:

Gravity Fed - Gas Combination Boiler - Pumped Gravity - Mains Pressure (Thermal Store) - Unvented Systems

The company reserves the right, in the event of a claim not covered by the guarantee, to charge the claimant for parts and labour at current rates. This guarantee is given in addition to and does not affect your statutory rights.

In the interest of continuous product development we reserve the right to alter the specification as necessary.

In the unlikely event that you need to make a claim on our guarantee please contact MX customer services on 01684 293311 or sales@mx-group.com

For Surface Mounted Thermostatic Shower FITTING INSTRUCTIONS

Introduction

Your bar shower fitting is a thermostatic mixer.

It has been designed and tested to comply with BS EN 1287:1999 & BS EN 1111:1999, manufactured to the highest quality standards.

These instructions are for your guidance to a safe and successful installation and should be left with the user.

Specification

Inlet Connections 1/2" BSP to 1/2" BSP fixings

Water Pressures: Min. 0.1 bar Max. 5 bar Maximum recommended imbalance between hot & cold pressures should not exceed 5:1

Factory Set Temperature: 38°C (Can be overridden to suit site conditions)
Hot & Cold Supply Temperature

Maximum Cold Supply 25°C Maximum Hot Supply 80°C

NOTE: The inlet hot water temperature must be at least 10°C above the required blend temperature to ensure that the safety shut off will work.

Pack Contents Checklist:

1 x The Valve, 1 x Riser rail kit, 1 x Shower hose, 2 x Elbow/shroud connecting kits and 1 x 5 Mode showerhead

Installation

Prior to drilling into walls, check there are no hidden electrical wires, cables or water supply pipes with the aid of an electronic detector. If you use power tools use them safely. Wear eye protection. Unplug equipment after use.

NB Isolating valves should be fitted to both hot and cold water supplies for servicing purposes.

- 1 Identify all components and check for completeness, particularly before arranging fitting.
- 2 This mixer should be installed in compliance with the Water Regulations. For further details contact your Local Water Authority.
- 3 This Mixing valve is suitable for use with the following systems:

Gravity Fed - Gas Combination Boiler - Pumped Gravity - Mains Pressure (Thermal Store) - Unvented Systems

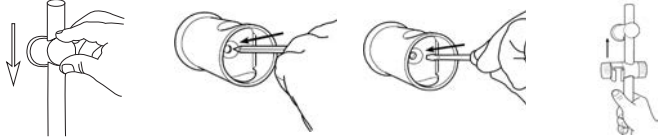
NOTE: On gravity systems the minimum distance from the underside of the cold water storage tank to the shower head must be 1 metre.

- 1 Determine correct orientation and position for the valve and screw the connectors into the wall connections, (1/2" BSP female), not supplied. Hot on the left and Cold on the right.
- 2 Screw the shrouds onto the connectors.
- 3 Place the sealing washer into the connecting nut and tighten the nuts onto the inlet connections. The flow control should be on the left, the temperature control on the right and the outlet underneath. Fit the mixer to the wall.
- 4 Before connecting the mixer, water should be flushed through the system to remove all debris Bar Shower Body

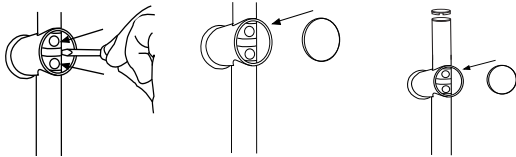
If you are not using mounting brackets (not supplied), the shower needs to be connected/supported with rigid pipework.

Adjustable Riser Rail

- 1 Establish position for the Riser Rail as suited to the user's requirement.
- 2 Mark the wall where the Upper Bracket is to be fixed.
- 3 Drill and plug the wall and fit the Upper Bracket.
- 4 Slide the rail through the top fixing bracket from the underneath ensuring height adjuster is correctly positioned and then locate position for bottom bracket.



- 5 Ensure the rail is vertical and mark the wall where the bracket is to be screwed. Slide the rail up through the top bracket and lightly pinch fixing nylon screws to hold the rail out of the way.
- 6 Drill and plug the wall and fix bottom bracket.
- 7 Release nylon fixing screws on top bracket and slide tube through the bottom bracket.
- 8 When satisfied with positioning finally tighten the nylon fixing screws on both brackets **NB** do not over tighten. Fix caps and the tube ends.



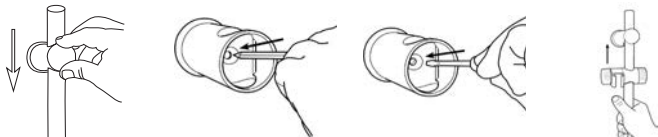
NOTE: On gravity systems the minimum distance from the underside of the cold water storage tank to the shower head must be 1 metre.

- 1 Determine correct orientation and position for the valve and screw the connectors into the wall connections, (1/2" BSP female), not supplied. Hot on the left and Cold on the right.
- 2 Screw the shrouds onto the connectors.
- 3 Place the sealing washer into the connecting nut and tighten the nuts onto the inlet connections. The flow control should be on the left, the temperature control on the right and the outlet underneath. Fit the mixer to the wall.
- 4 Before connecting the mixer, water should be flushed through the system to remove all debris Bar Shower Body

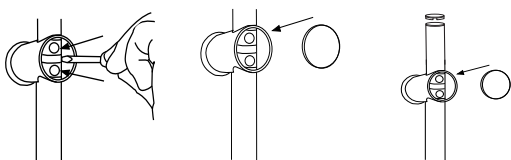
If you are not using mounting brackets (not supplied), the shower needs to be connected/supported with rigid pipework.

Adjustable Riser Rail

- 1 Establish position for the Riser Rail as suited to the user's requirement.
- 2 Mark the wall where the Upper Bracket is to be fixed.
- 3 Drill and plug the wall and fit the Upper Bracket.
- 4 Slide the rail through the top fixing bracket from the underneath ensuring height adjuster is correctly positioned and then locate position for bottom bracket.



- 5 Ensure the rail is vertical and mark the wall where the bracket is to be screwed. Slide the rail up through the top bracket and lightly pinch fixing nylon screws to hold the rail out of the way.
- 6 Drill and plug the wall and fix bottom bracket.
- 7 Release nylon fixing screws on top bracket and slide tube through the bottom bracket.
- 8 When satisfied with positioning finally tighten the nylon fixing screws on both brackets **NB** do not over tighten. Fix caps and the tube ends.



Operation

There are 2 control handles on this valve. To control the flow turn the left control handle anti-clockwise to turn on and increase the flow. Turn clockwise to decrease and turn off. On the temperature control a numbered dial indicates the direction for hot and cold flow. Turn anti-clockwise for hot and clockwise for cold. If in operation an increase in temperature above the factory set temperature is required, simply depress the stop button on the temperature handle when it reaches the stop and continue to turn the handle anti-clockwise until the desired temperature is found.

Cleaning

Your fitting has a high quality finish and should be treated with care to preserve the visible surfaces.

All surfaces will wear if not cleaned correctly, the only safe way to clean your mixer is to wipe it with a soft damp cloth. Stains can be removed using washing up liquid. All bath cleaning powders and liquids will damage the surface of your fitting, even the non-scratch cleaners.

Fault Diagnosis

If your valve fails to function correctly, the following should be checked:

Check that the hot and cold connections are the correct way around. Hot on the left and cold on the right.

Ensure that the hot water temperature is adequate, the recommended minimum temperature is 60°C. The hot water temperature has to be at least 10°C higher than the blend temperature to ensure that the safety shut off will work.

Guarantee

All products are manufactured to the highest standards and have a years Replacement Guarantee which covers any defect in manufacture.

Any part found to be defective during the guarantee period will be replaced without charge providing that the product has been installed in accordance with our instructions, used as intended and maintained/serviced as recommended.

In the unlikely event that any problems are encountered with this product's performance on installation, please contact our Customer Service Department for help.

It may expedite matters to be able to supply proof and date of purchase.

The guarantee excludes damage caused by accident. Misuse or neglect and does not cover the following:

- Those components subject to wear and tear such as 'O' rings and washers etc,
- Damage caused by faulty installation.
- Damage caused by waterborne debris,
- Damage caused by improper cleaning products,
- The products being used for a purpose other than intended.

Operation

There are 2 control handles on this valve. To control the flow turn the left control handle anti-clockwise to turn on and increase the flow. Turn clockwise to decrease and turn off. On the temperature control a numbered dial indicates the direction for hot and cold flow. Turn anti-clockwise for hot and clockwise for cold. If in operation an increase in temperature above the factory set temperature is required, simply depress the stop button on the temperature handle when it reaches the stop and continue to turn the handle anti-clockwise until the desired temperature is found.

Cleaning

Your fitting has a high quality finish and should be treated with care to preserve the visible surfaces.

All surfaces will wear if not cleaned correctly, the only safe way to clean your mixer is to wipe it with a soft damp cloth. Stains can be removed using washing up liquid. All bath cleaning powders and liquids will damage the surface of your fitting, even the non-scratch cleaners.

Fault Diagnosis

If your valve fails to function correctly, the following should be checked:

Check that the hot and cold connections are the correct way around. Hot on the left and cold on the right.

Ensure that the hot water temperature is adequate, the recommended minimum temperature is 60°C. The hot water temperature has to be at least 10°C higher than the blend temperature to ensure that the safety shut off will work.

Guarantee

All products are manufactured to the highest standards and have a years Replacement Guarantee which covers any defect in manufacture.

Any part found to be defective during the guarantee period will be replaced without charge providing that the product has been installed in accordance with our instructions, used as intended and maintained/serviced as recommended.

In the unlikely event that any problems are encountered with this product's performance on installation, please contact our Customer Service Department for help.

It may expedite matters to be able to supply proof and date of purchase.

The guarantee excludes damage caused by accident. Misuse or neglect and does not cover the following:

- Those components subject to wear and tear such as 'O' rings and washers etc,
- Damage caused by faulty installation.
- Damage caused by waterborne debris,
- Damage caused by improper cleaning products,
- The products being used for a purpose other than intended.

plumbworld
Big brands, small prices.

Pdf Supplied By <http://www.plumbworld.co.uk/>