

IMPORTANT – CARE OF YOUR PRODUCT CLEANING

After use all surfaces should be maintained by wiping with a soft, damp, clean cloth and then polished using a dry duster. NO abrasive powder, detergents or polishes should be used. Cleaner containing alcohol, acid or corrosive chemicals should not be used.

NOTE

- ◆ Some household bleaches and denture cleaners can damage plated or coloured finishes and if splashed onto a fitting should be immediately washed off with cold water.
- ◆ If these instructions are followed this product will give many years of satisfactory use.
- ◆ We have a policy of continuous improvement and reserve the right to change specification without notice.

IMPORTANT:

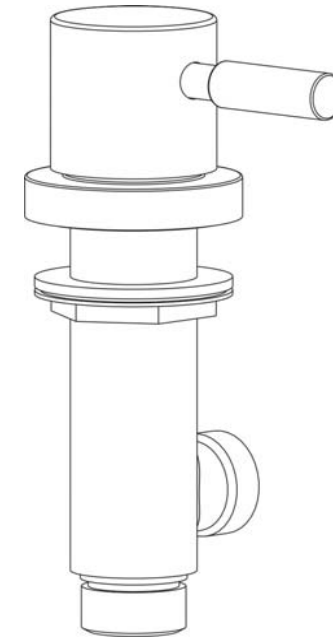
In case of reduction of flow rate, close the two main inlets and check if the filter at the bottom of the non-return valve are dirty, **in this case clean them.**

GUARANTEE

The shower valve is guaranteed for a period of 2 years against any defects of materials and workmanship from date of purchase, subject to correct installation, maintenance and use in accordance with this instruction leaflet. Please retain proof of purchase.

During the guarantee period parts will be replaced or repaired at our option. No labour costs will be reimbursed without the prior agreement of Bathroom Brands International Ltd.

This guarantee is offered as an extra benefit and does not affect your statutory rights as a consumer in any way whatsoever. 12.'07



**3/4" SIDE VALVE
PWD1285 or PWD1286**

bathroom brands
INTERNATIONAL LTD

customerservice@bathroombrands.co.uk

These side bodies are intended to be used as a manual control in conjunction with other products, such as, a bath spout or a combined bath fill and overflow from the Plumbworld range in order to create a system to suit your requirements.

WATER PRESSURE

These fittings are suitable for use at all supply pressures. Depending on outlet choice and whether the fittings are installed at low pressure i.e. tank fed, then the minimum height from the outlet to the underside of the cold tank should be 2 metres to ensure adequate performance.

This fitting should be installed in compliance with Water Regulations. Where the supplies are unbalanced i.e. hot water from the cylinder tank/cold from the mains, approved check valves must be fitted in the supply pipes. For further details contact your Local Water Authority.

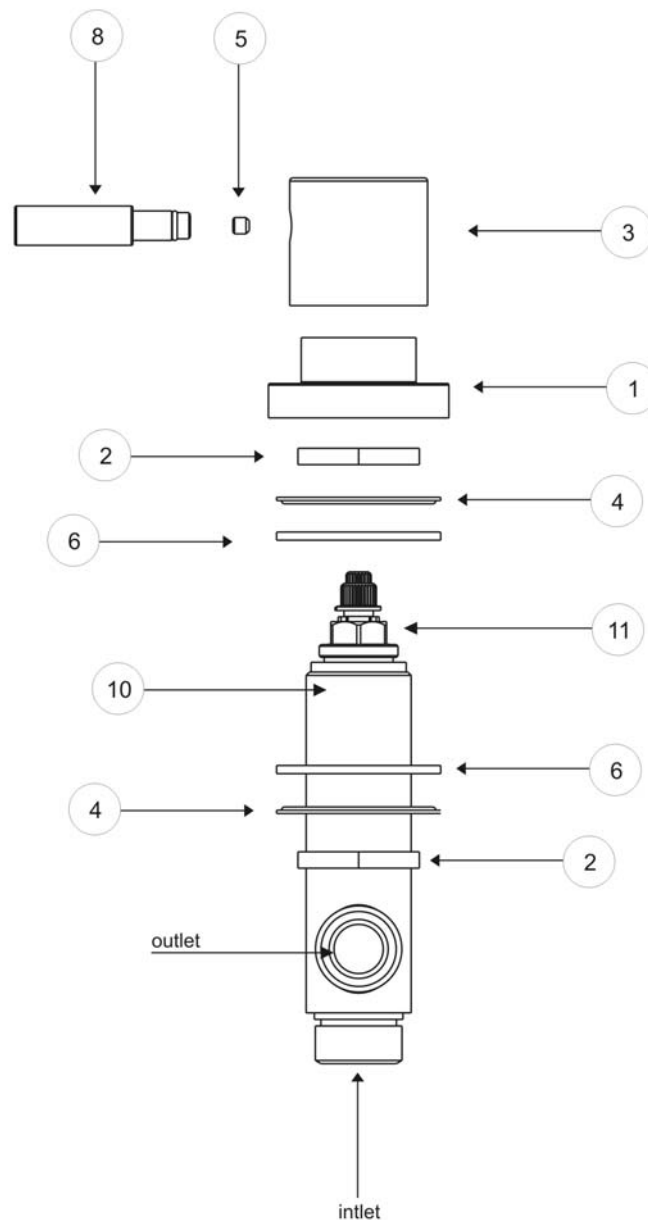
INSTALLATION

1. Fit the side bodies (10) to the bath using the shroud (1) with one nut (2), one flange (4) and one washer (6) above and one nut (2), one flange (4) and one washer (6) below the bath.
2. Fit the handles (3) to the side bodies making sure the valves are closed. Secure by tightening the grub screw (5) within the handle concealed by the lever (8).
4. Connect the side bodies to the outlet.
5. Connect the hot and cold water supplies to the side body inlets.
6. Fully open both valves, letting them run for a few minutes to check all joints and connections for leak.

MAINTENANCE

If the fitting begins to drip:

1. Turn off the water supply.
2. Unscrew lever (8), loosen grub screw (5) with hexagon key and pull off handle (3).
3. Remove valve (11).
4. Carefully clean seating, rubber washer and ceramic disc.
5. Replace valve and handle and turn on the water supply.
6. If problem persists contact our customer service quoting the product code.



plumbworld
Big brands, small prices.

Pdf Supplied By <http://www.plumbworld.co.uk/>