

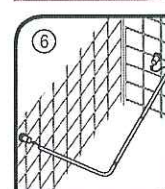
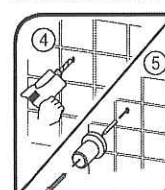
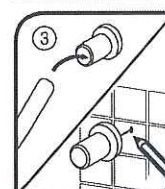
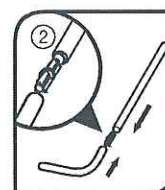
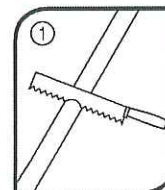


# SHOWER CURTAIN RAIL KIT CD005

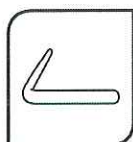
(Read Instructions Carefully Before Installing)

## For the installation of the Shower Curtain Rail Kit:

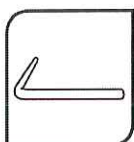
1. Measure the length of rail required. If it is necessary to shorten the metal rail sections, use a junior hacksaw and remove burrs with a fine file. Fit the cut end into the wall bracket to conceal any rough edges.
2. Assemble rail by connecting the pieces together in your chosen shape. Use the plastic dowels to join the metal rail sections.
3. Place the assembled rail in position and mark the wall bracket locations. Ensure that both wall brackets are at the same height.
4. Remove the wall brackets from the rod ends, reposition brackets and mark the screw hole location.
5. Use a No 10/5.5mm masonry drill bit to make a hole 35mm deep. Insert plugs and fit wall brackets.
6. Fit the rail assembly into the wall brackets. Ensure the rail is pushed firmly into each bracket.



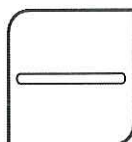
## Combinations



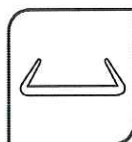
**Small 'L'**  
size:  
0.90M X 0.90M  
(35.50" X 35.50")  
1 x bend  
2 x long lengths



**Length 'L'**  
size:  
0.75M X 1.67M  
(29.50" X 65.75")  
1 x bend  
2 x long lengths  
1 x short length



**Length**  
size:  
2.06M (81")  
2 x long lengths  
1 x short length



**'U' shape**  
size:  
0.90M X 0.92M X 0.90M  
(35.50" X 36.25" X 35.50")  
2 x bends  
2 x long lengths  
1 x short length

## Tips:

- A piece of insulating or masking tape applied to the wall before marking out the fixing holes will help stop the drill from wandering, particularly on tiled surfaces
- When working near a basin or bath insert the plug in the waste fitting so that small parts cannot be lost
- Take care not to drop accessories or tools into the basin or bath

## CAUTION:

- Check there are no hidden cables or pipes before drilling holes for wall plugs
- Exercise great care when using power tools near water. The use of a residual current device (RCD) is recommended

customerservices@bathroombrands.co.uk

**plumbworld**  
**Big brands, small prices.**

Pdf Supplied By <http://www.plumbworld.co.uk/>