

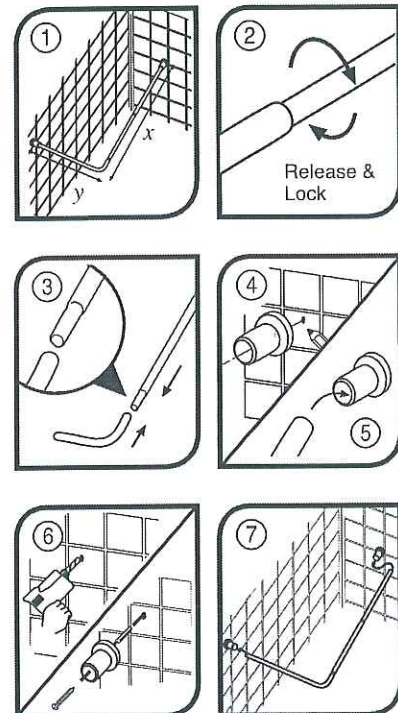


SHOWER CURTAIN ROD CD004

(Read Instructions Carefully Before Installing)

For the installation of the Shower Curtain Rod:

1. Firstly measure the length of rod required. Fit the sections together using the additional length if required.
2. Extend the telescopic curtain rod in the following way: Twist to release. Extend. Twist to lock.
3. Fit the wall brackets to each end of the rod to check the fixing location points on the wall.
4. Place in position and mark wall bracket location using a pencil. Ensure that both wall brackets are at the same height and curtain rod is level.
5. Remove the wall brackets from the rod, place the brackets in position and use a pencil to mark the fixing points for the screws.
6. Drill holes using a number 10/5.5mm masonry drill bit. Insert wall plugs and fit the brackets, using the screws provided.
7. Slide bracket covers onto rails. Fit rails into wall brackets. Ensure the rail is pushed firmly into each bracket.



Care instructions

- Clean regularly using a non abrasive liquid bathroom cleaner.

Tips:

- A piece of insulating or masking tape applied to the wall before marking out the fixing holes will help stop the drill from wandering, particularly on tiled surfaces
- When working near a basin or bath insert the plug in the waste fitting so that small parts cannot be lost
- Take care not to drop accessories or tools into the basin or bath

CAUTION:

- Check there are no hidden cables or pipes before drilling holes for wall plugs
- Exercise great care when using power tools near water. The use of a residual current device (RCD) is recommended

plumbworld
Big brands, small prices.

Pdf Supplied By <http://www.plumbworld.co.uk/>