



# SHOWER CURTAIN ROD CD001

(Read Instructions Carefully Before Installing)

**For the installation of the Shower Curtain Rod:**

1. Firstly measure the length of the rod required to fit the opening next to the shower. Allow an extra 25mm (1").
2. Fit the two end pieces together and draw the inner rod out to the length required, including the extra 25mm (1").
3. The "O" rings must be fitted in the groove of each end piece, as shown.
4. Push the rod together against the internal mechanism, fit into the opening and the rod is now ready for use.

**Optional:**

To fix the rod permanently, use a pencil to mark the wall at both ends to locate the fixing points. Drill the holes using a 6.5mm drill bit to a depth of 40mm. Insert wall plugs and fix the end pieces in place using 6.5mm screws. (A fixing kit is not provided).

**Care instructions**

- Clean regularly using a non abrasive liquid bathroom cleaner.

**Please note:**

Should you extend the rod by too much to fit the opening, please follow these simple instructions:

- Remove both end fittings
- Fully remove the small tube from the larger tube by allowing it to slide right through
- Re insert small tube into larger tube with the spring mechanism going in last
- Follow steps 2 and 3 again

**Tips:**

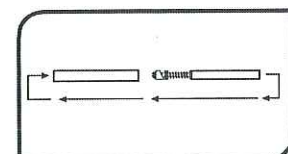
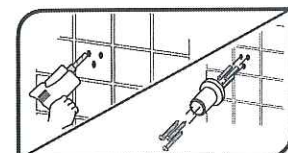
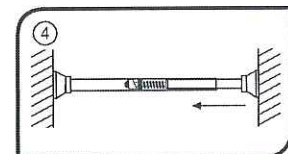
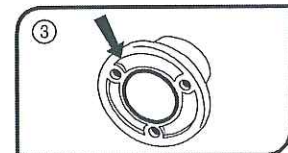
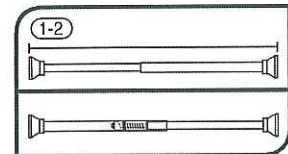
- A piece of insulating or masking tape applied to the wall before marking out the fixing holes will help stop the drill from wandering, particularly on tiled surfaces
- When working near a basin or bath insert the plug in the waste fitting so that small parts cannot be lost
- Take care not to drop accessories or tools into the basin or bath

**CAUTION:**

- Check there are no hidden cables or pipes before drilling holes for wall plugs
- Exercise great care when using power tools near water. The use of a residual current device (RCD) is recommended

**WARNING:**

- Avoid risk of scalding. Always check water temperature before using shower
- This product MUST NOT be used as a grab rail



**plumbworld**  
**Big brands, small prices.**

Pdf Supplied By <http://www.plumbworld.co.uk/>