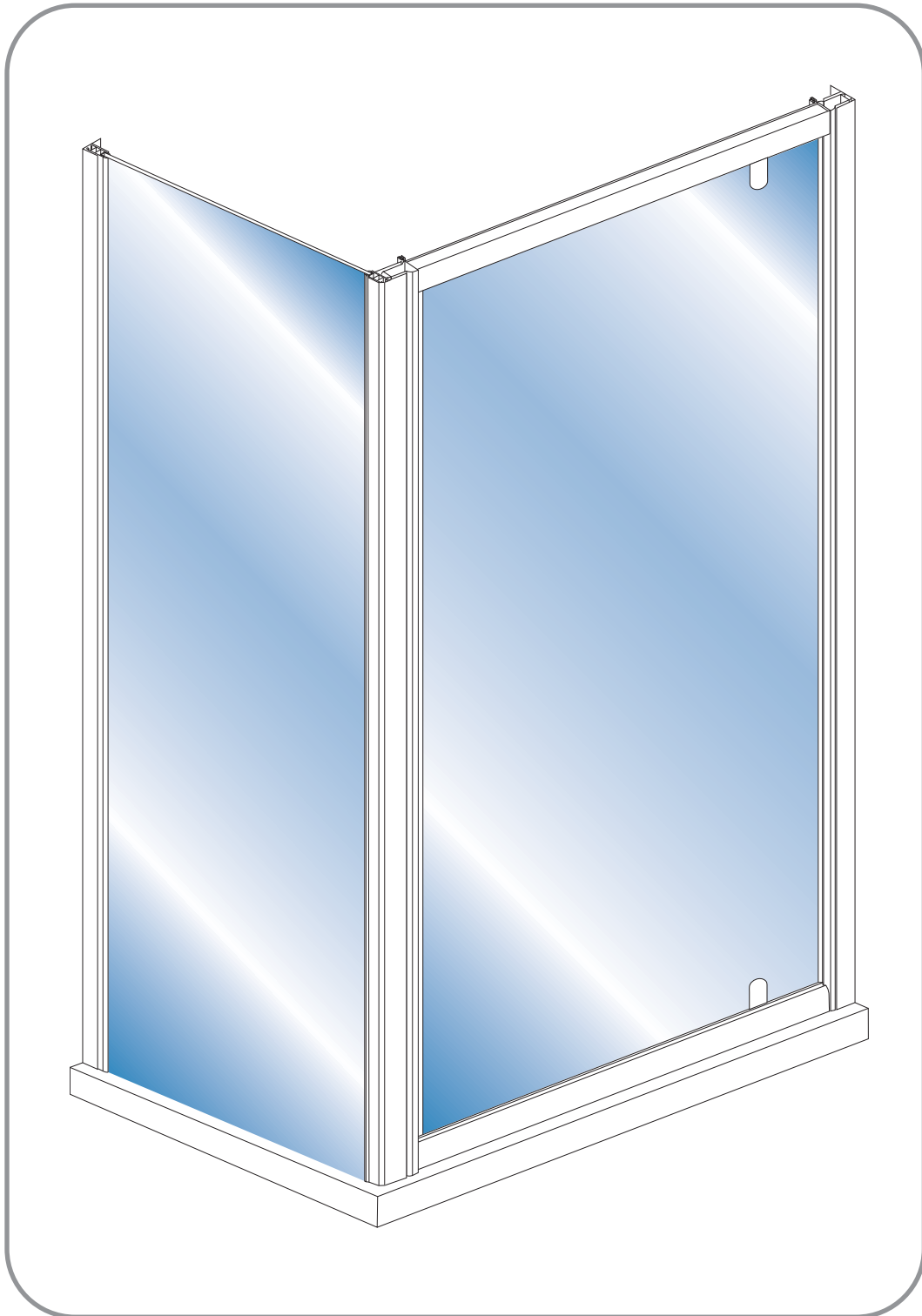


# Pivot Door



## Step-by-Step Installation Guide

# BEFORE YOU START

Please inspect the product immediately upon receipt for transit damage, missing packs/parts or manufacturing fault. Damage reported later cannot be accepted. Please handle the product with care avoiding knocks and shock loading to all sides and edges of the glass.

The enclosure must be fitted to a non-porous surface.

Fully seal the tray with silicone sealant before fitting the enclosure.

**NOTE: Safety glass can not be re-worked.**

Please read these instructions carefully before start of installation.

Special care should be taken when drilling walls to avoid hidden pipes or electrical cables.

## Aftercare instructions

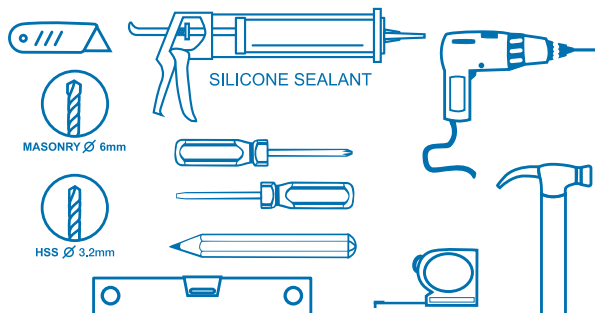
After use, your shower should be cleaned with soap and water. This is particularly important in hard water districts where insoluble lime salts may be deposited and allowed to build up. Cleaners of a gritty or abrasive nature should not be used. Care should be taken to avoid contact with strong chemicals such as organic solvents and strippers.

Glass cleaners can be used but with caution, if in doubt contact the manufacturer of the cleaner in question.

Please keep these instructions for aftercare and customer service details.



**NOTE: This product is heavy and may require two people to install.**



**0870 241 6131**

LINES OPEN: 8.30am - 5.00pm MONDAY - FRIDAY  
STANDARD NATIONAL CALL CHARGE RATE  
FROM BT LANDLINES

# Packing List (800mm Door Panel)

1 x Installation instruction



8 x Wall plugs  
8 x Round screws M4x35  
8 x Screws cover caps



8 x Screws M4x8  
8 x Screws cover caps



2 x Wall posts



1 x Door panel



# PACKING LIST (800mm Side Panel)

8 x Screws M4x8  
8 x Screws cover caps

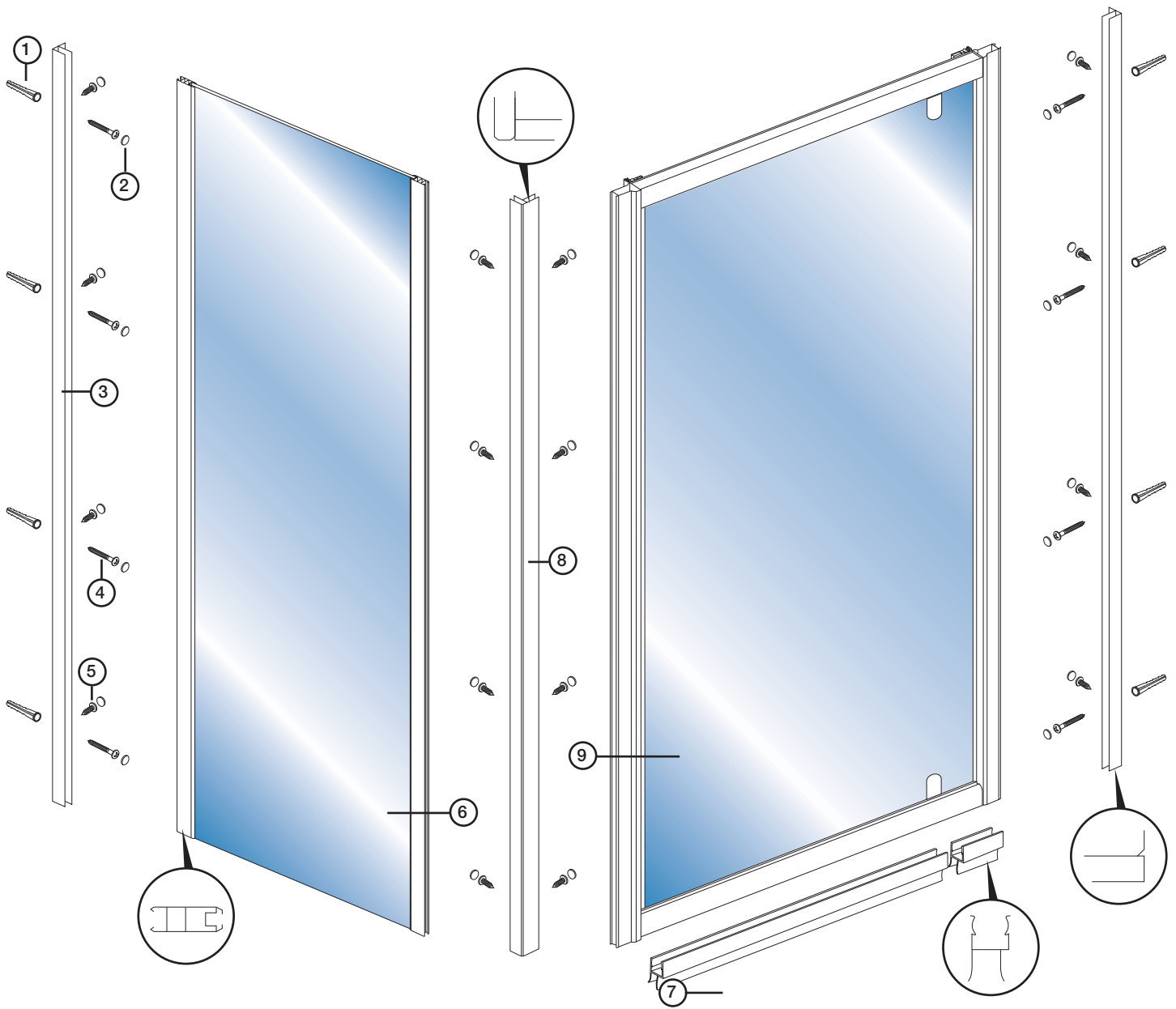


1 x Corner post



1 x Side panel

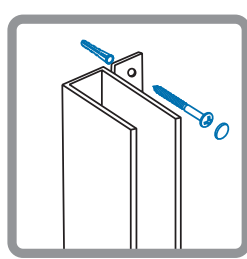
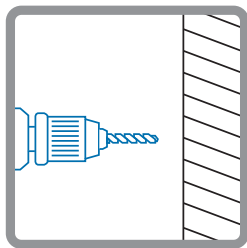
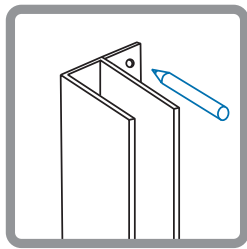
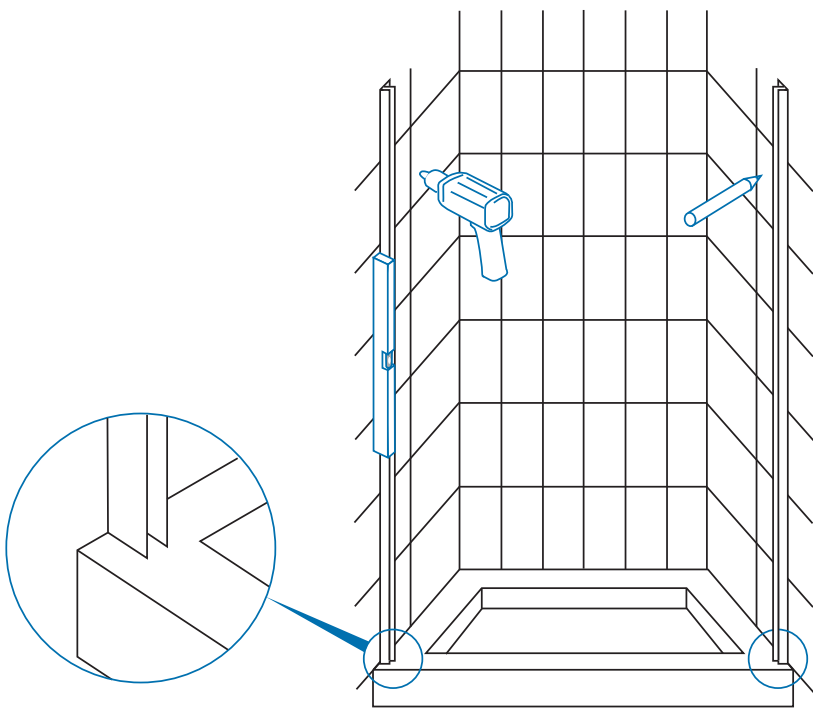




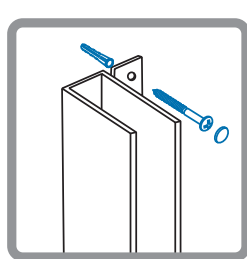
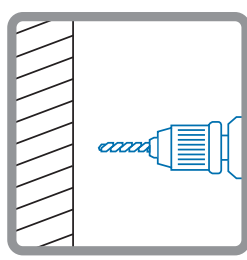
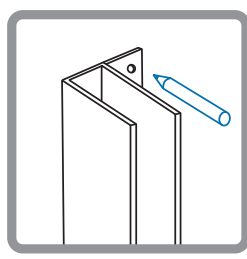
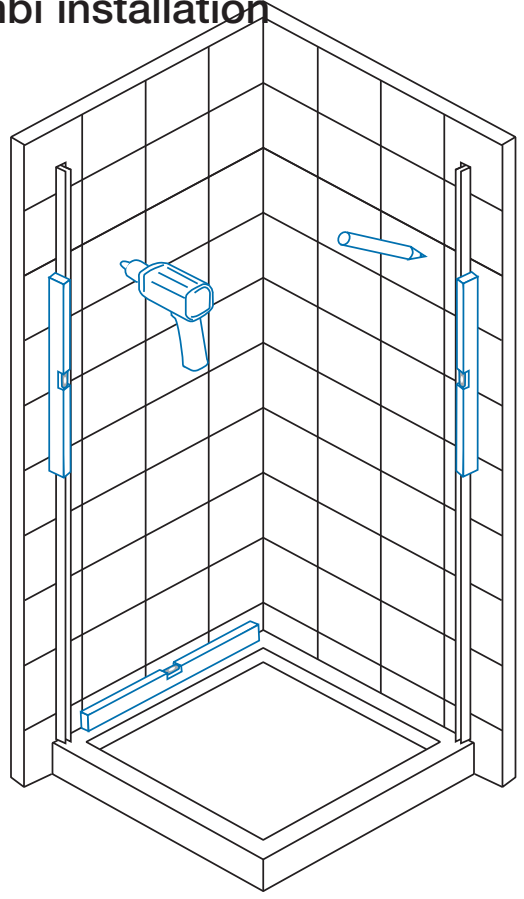
- ① 8 x Wall plugs
- ② 24 x Scew cover caps
- ③ 2 x Wall posts
- ④ 8 x Screws M4 x 35
- ⑤ 16 x Screws M4 x 8

- ⑥ 1 x Side panel
- ⑦ 2 x Water deflectors
- ⑧ 1 x Corner Post
- ⑨ 1 x Door panel

**1** Recess installation

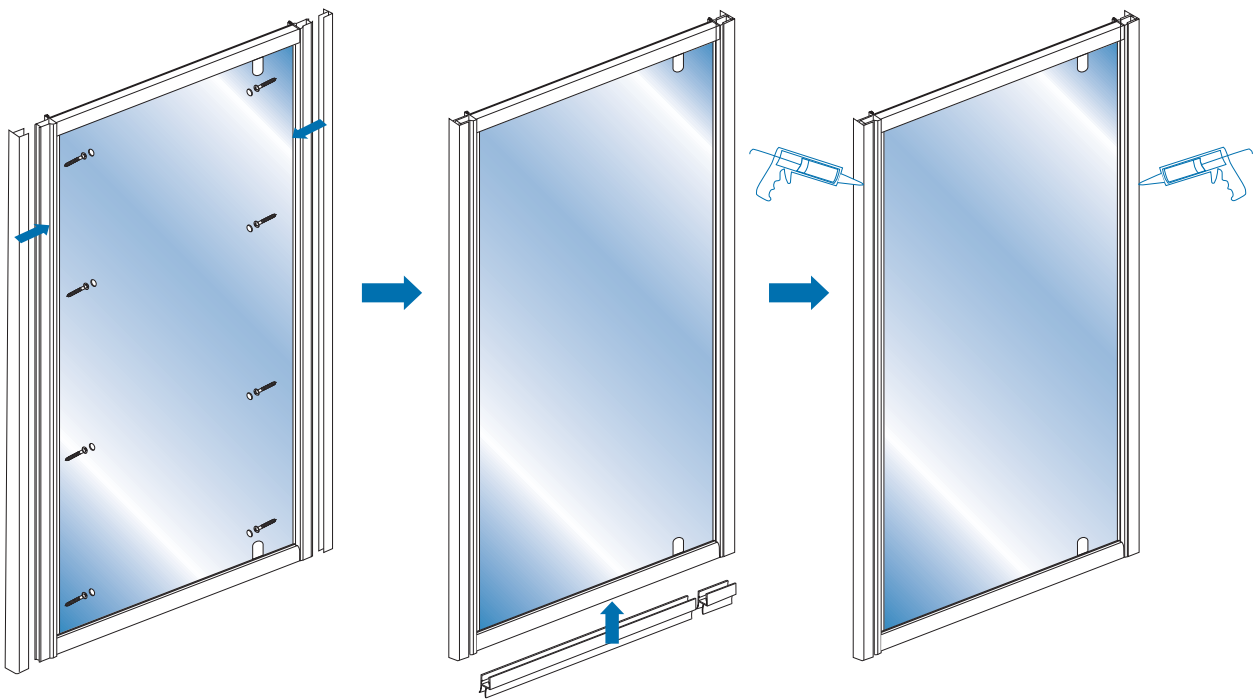


**1** Combi installation



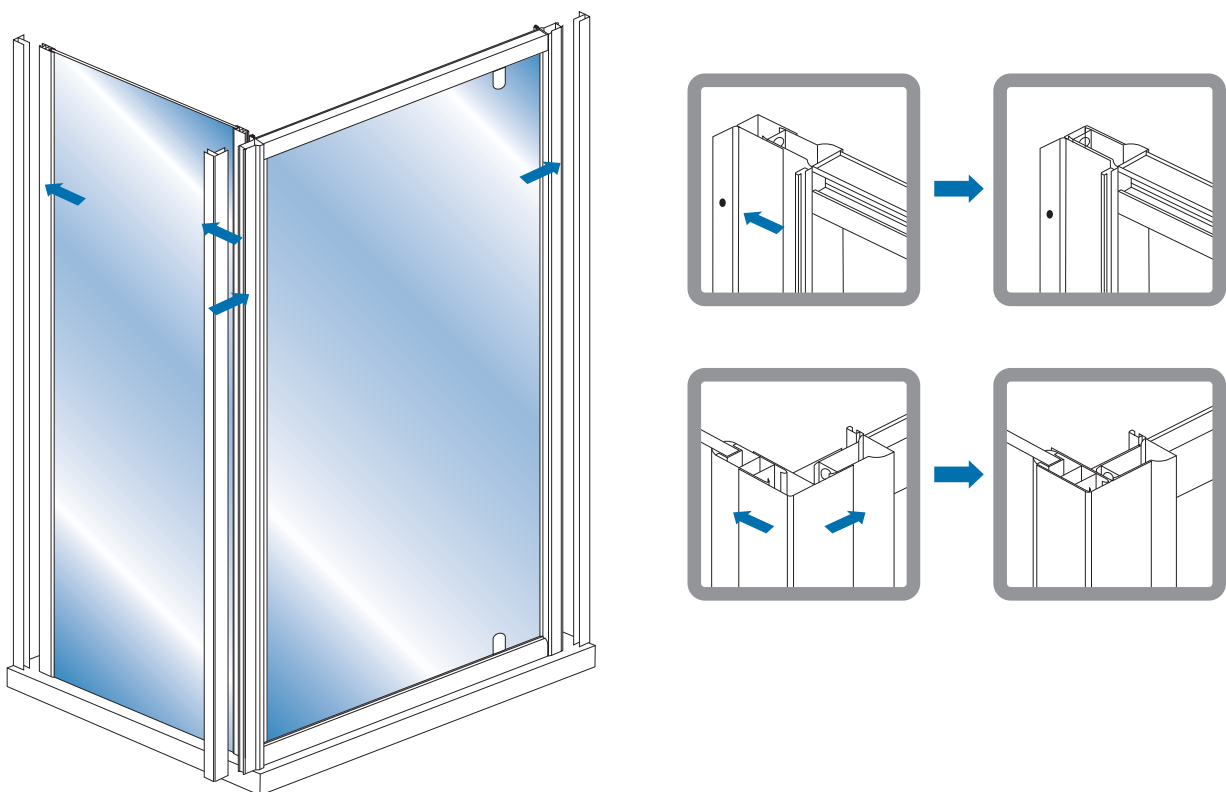
2

## Recess installation

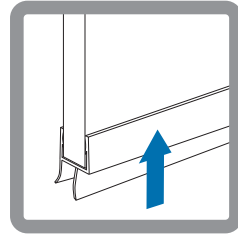
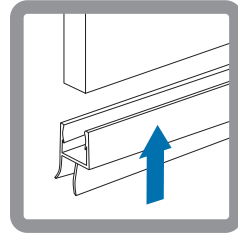
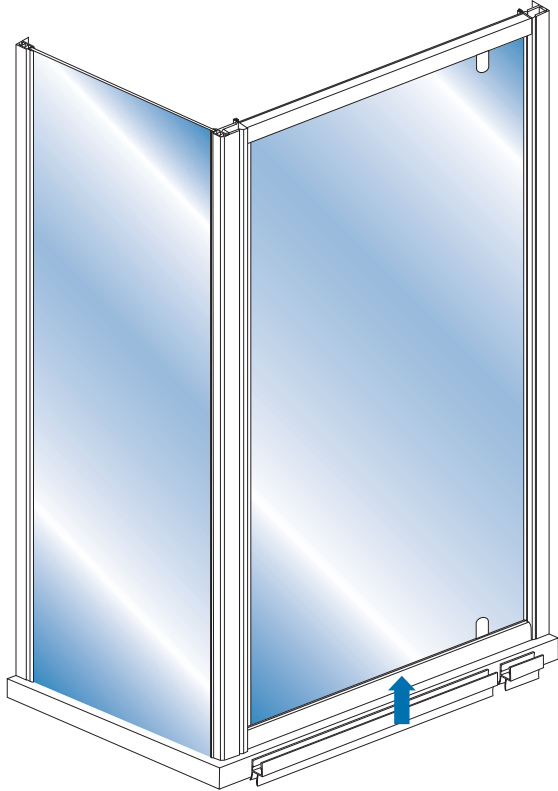


2

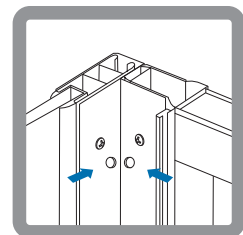
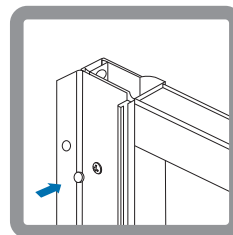
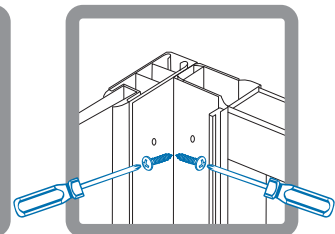
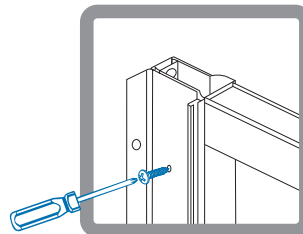
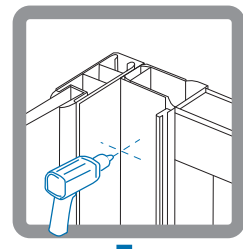
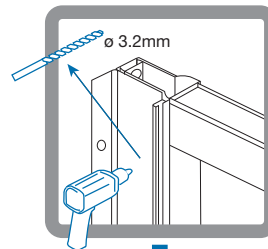
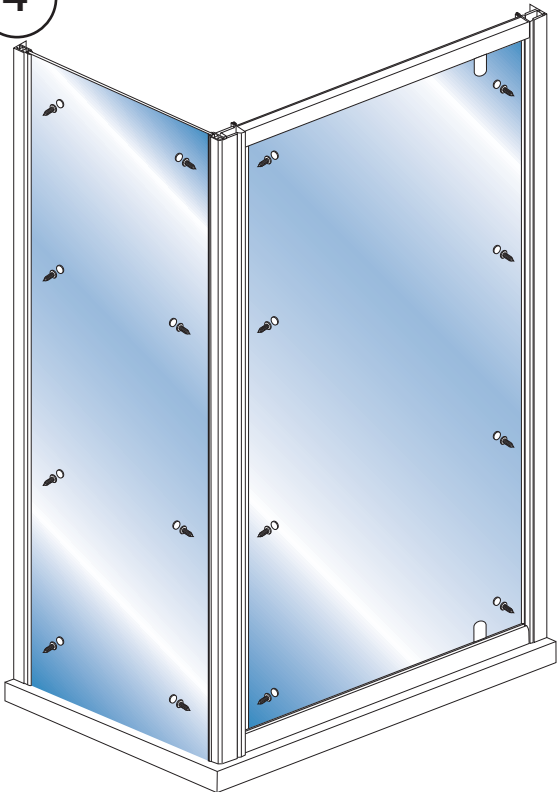
## Combi installation



3

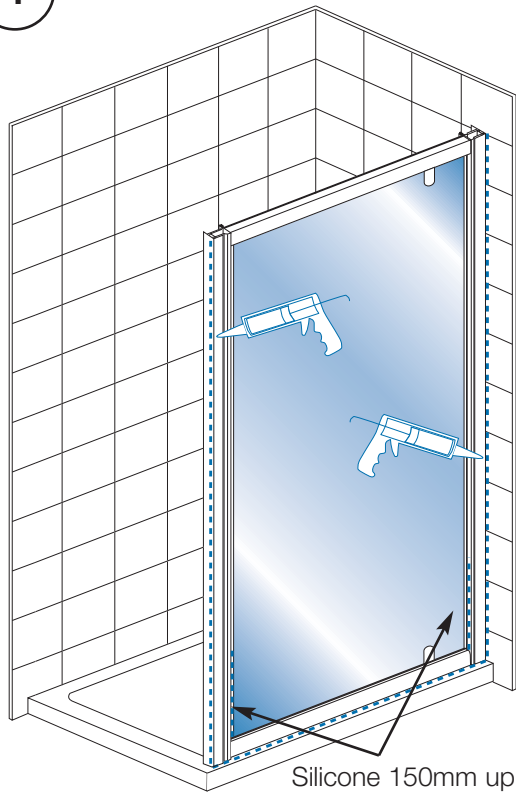


4



4

### Recess installation

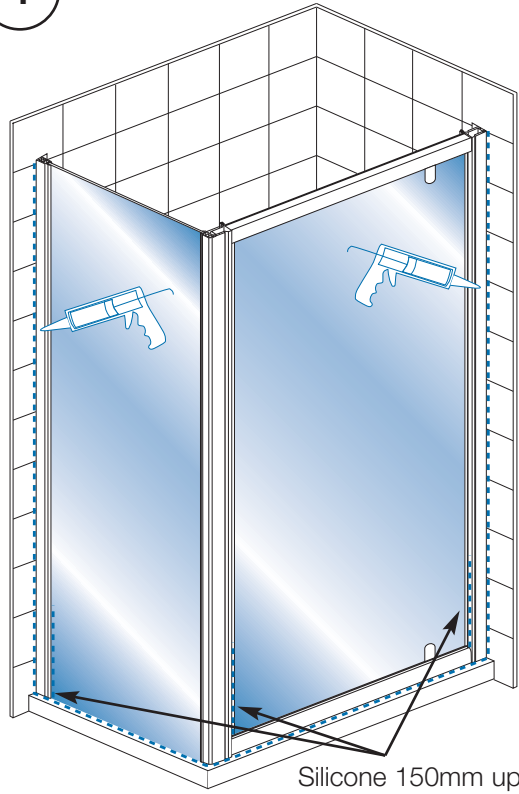


Silicone 150mm up

Allow 24 hours for silicone to dry before use!

4

### Combi installation



Silicone 150mm up

Allow 24 hours for silicone to dry before use!



**plumbworld**  
**Big brands, small prices.**

Pdf Supplied By <http://www.plumbworld.co.uk/>